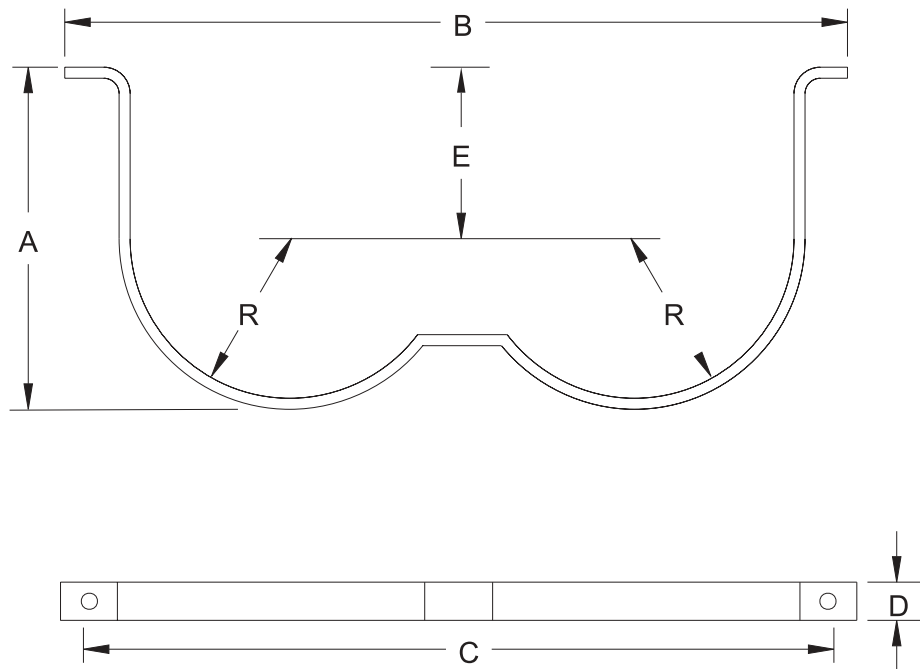


CO₂ Component Description

Carbon Dioxide Two Cylinder Straps

Effective: April 2002
K-81-1240

| PART NUMBER | CYLINDER SIZE | A | | B | | C | | D | | E | | R | |
|-------------|---------------|------|-----|------|-----|------|-----|------|------|------|------|------|-----|
| | | in. | mm | in. | mm | in. | mm | in. | mm | in. | mm | in. | mm |
| 241219 | 50 and 75 | 7.75 | 197 | 22.8 | 579 | 21.5 | 546 | 1.75 | 44.4 | 2.88 | 73.1 | 4.63 | 118 |
| 241254 | 100 | 10.3 | 262 | 25.6 | 650 | 24.3 | 617 | 1.75 | 44.4 | 4.75 | 120 | 5.28 | 134 |



MATERIAL: STEEL

This literature is provided for informational purposes only. KIDDE-FENWAL, INC. assumes no responsibility for the product's suitability for a particular application. The product must be properly applied to work correctly. If you need more information on this product, or if you have a particular problem or question, contact KIDDE-FENWAL INC., Ashland, MA 01721. Telephone: (508) 881-2000

Kidde Fire Systems
400 Main Street
Ashland, MA 01721 USA
Tel: (508) 881-2000
Fax: (508) 881-8920
<http://www.kiddefiresystems.com>