



Connecting Link

Description

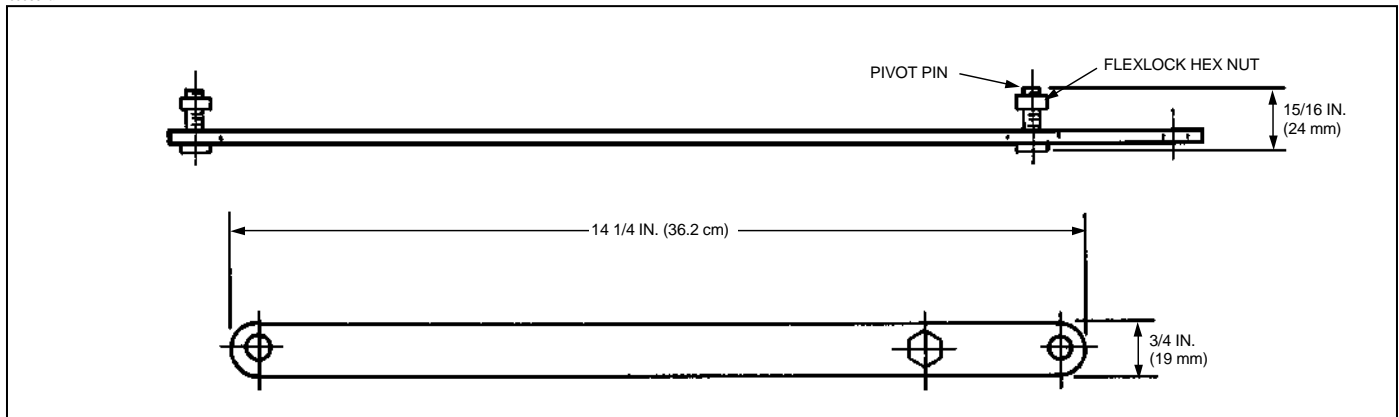
The connecting link is used to connect the lever releases located on the pilot cylinders together. When cable or manual actuation is required, all cylinders will actuate simultaneously. The connecting link can be used on CV90, MAX, or AP-8 Ansul carbon dioxide valves.

One size connecting link is available for all size cylinders.

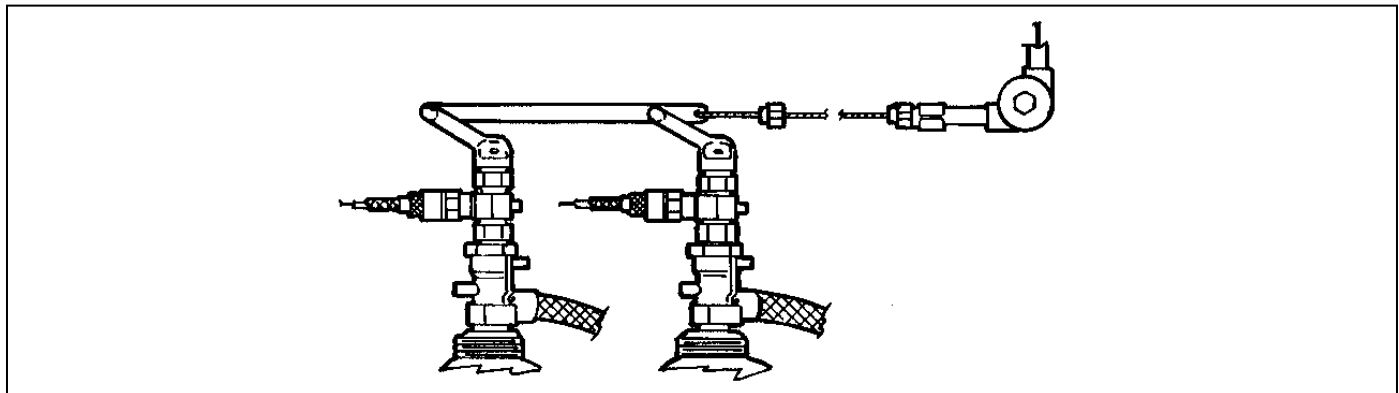
Shipping Assembly Part No.	Description
42514	Connecting link

Component	Material	Approvals
Connecting Link	Steel	U.S. Coast Guard (162.038/7/0) UL (EX-2968)

000661a



000661c



001840

ANSUL is a registered trademark.