



Cylinder Bracketing

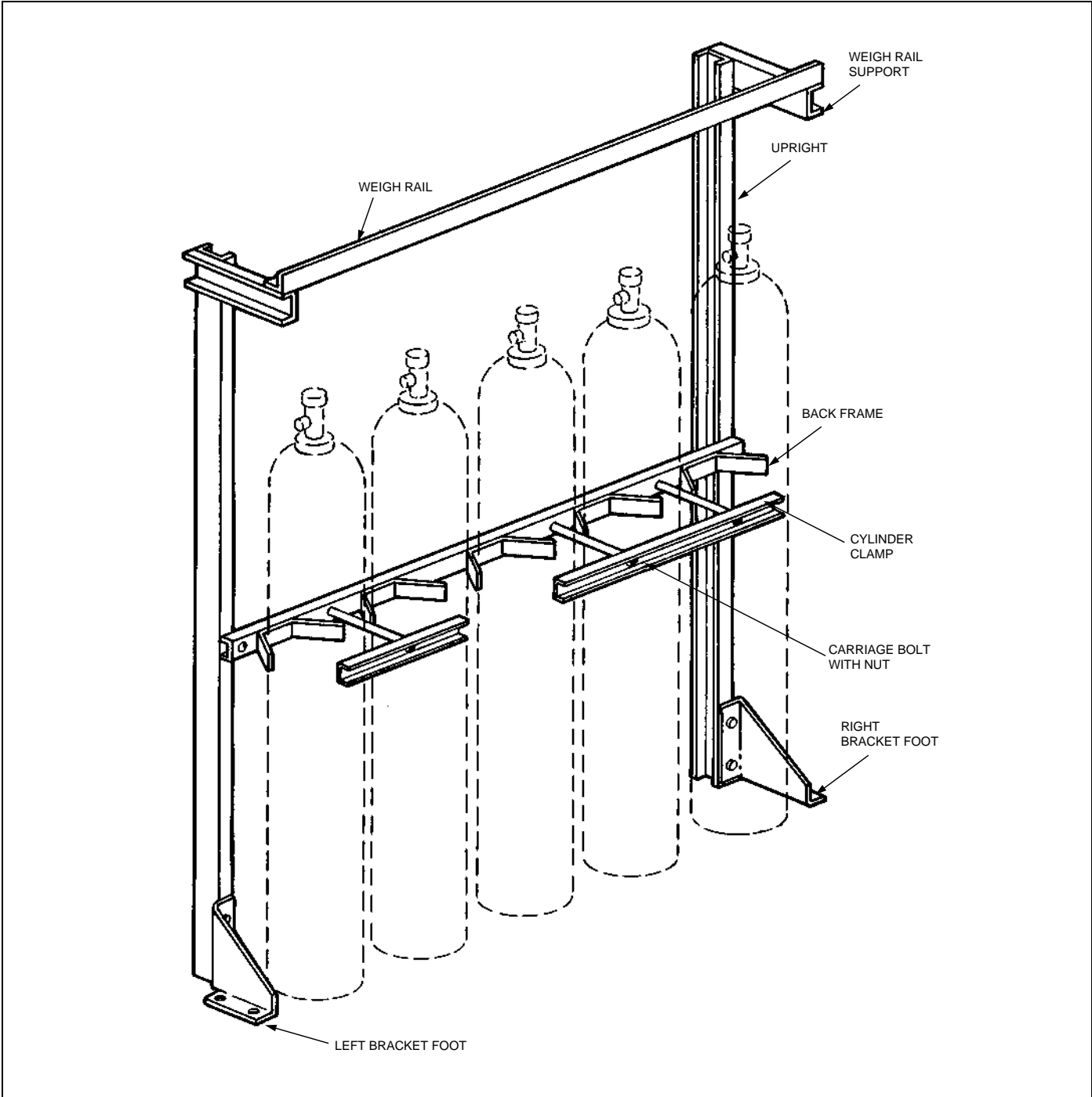
Description

The cylinder bracketing is designed to rigidly support the installed carbon dioxide cylinders. The bracketing components are constructed of heavy structural steel. Bracket assemblies are available in modules for two to six cylinders and can also be mated together for any combination over six. Bracketing can be assembled to support single row, double row or back-to-back rows of cylinders. Bracketing uprights and weigh rail supports are also available for weighing cylinders in place. Bracketing components are painted with a red enamel coating. Uprights and back frame assemblies can be bolted or welded together, which ever makes the installation more convenient. For weighing cylinders, a scale and lifting yoke is also available.

Component	Material	Approvals
Bracketing	Steel	U.S. Coast Guard (162.038/7/0) UL (EX-2968) FM Approved

Shipping Assembly Part No.	Description
45120	50 lb. (22.7 kg) cylinder strap (single cylinder)
45244	50 lb. (22.7 kg) cylinder channel with nuts and bolts (single cylinder)
45121	75 lb. (34 kg) cylinder strap (single cylinder)
45261	75 lb. (34 kg) cylinder channel with nuts and bolts (single cylinder)
45122	100 lb. (45.4 kg) cylinder strap (single cylinder)
45245	100 lb. (45.4 kg) cylinder channel with nuts and bolts (single cylinder)
79638	Back frame assembly (2 cylinder)
79639	Back frame assembly (3 cylinder)
79640	Back frame assembly (4 cylinder)
79641	Back frame assembly (5 cylinder)
79642	Back frame assembly (6 cylinder)
73257	Upright (used either for right or left side)
73553	Single row or back-to-back row bracket foot (left side)
73554	Single row or back-to-back row bracket foot (right side)
73555	Double row bracket foot (left side)
73556	Double row bracket foot (right side)
73256	Center upright (required when weighing seven or more cylinders in a row)
79413	Connector (required to hook together back frames for seven or more cylinders)
73250	10 in. (25.4 cm) carriage bolt with nut (for single row 50 lb. (22.7 kg) cylinders)
73251	10.5 in (26.7 cm) carriage bolt with nut (for single row 75 lb. (34 kg) cylinders)
73252	12 in. (30.5 cm) carriage bolt with nut (for single row 100 lb. (45.4 kg) cylinders)
73253	20 in. (50.8 cm) carriage bolt with nut (for double row 50 lb. (22.7 kg) cylinders)
73254	20.5 in. (52.1 cm) carriage bolt with nut (for double row 75 lb. (34 kg) cylinders)
73255	25 in. (63.5 cm) carriage bolt with nut (for double row 100 lb. (45.4 kg) cylinders)
73266	Weigh rail (two cylinder)
73267	Weigh rail (three cylinder)
73268	Weigh rail (four cylinder)
73269	Weigh rail (five cylinder)
73270	Weigh rail (six cylinder)
73091	Cylinder clamp (2 cylinders)
73092	Cylinder clamp (3 cylinders)

Shipping Assembly Part No.	Description
71683	Weigh rail support (single row)
71682	Weigh rail support (double row)
71684	Weigh rail support (back-to-back)
74241	Scale
69877	Lifting yoke



0001838

ANSUL is a registered trademark.