

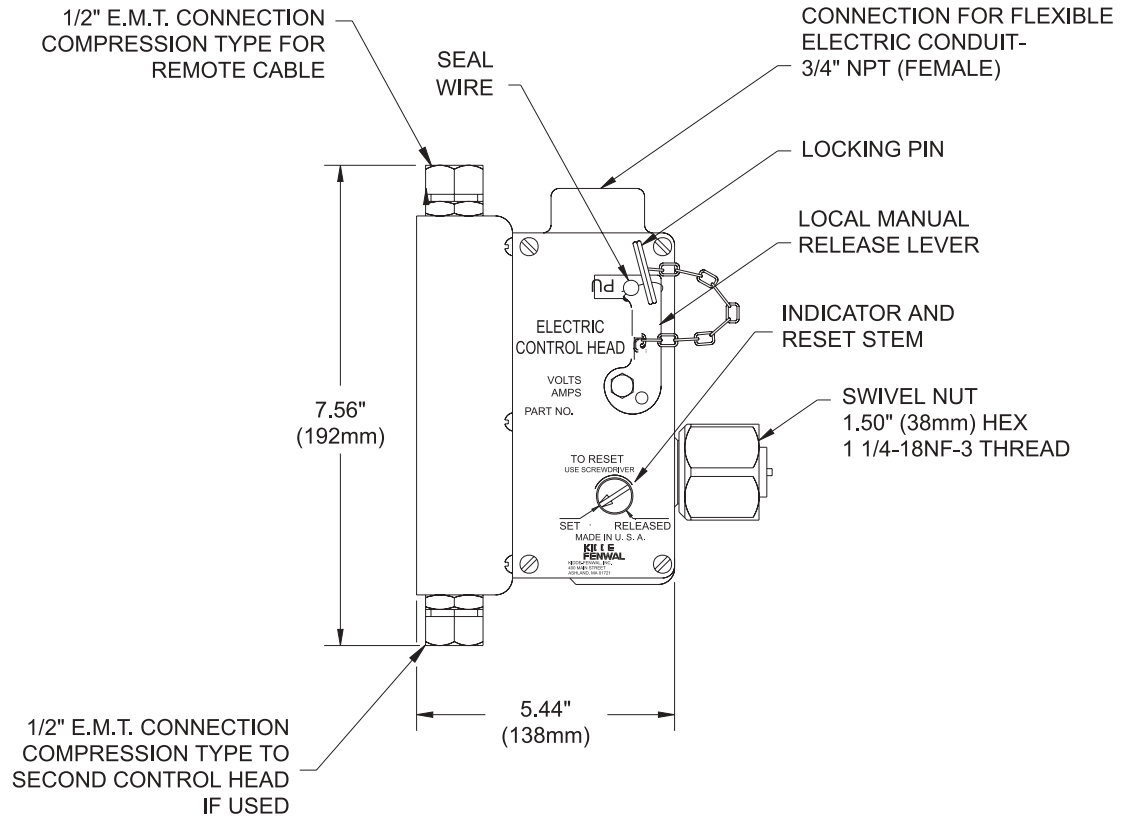
CO₂ Component Description



Electric and Cable Operated Control Head

Effective: April 2002

K-81-8030



PART No.	CONTROL HEAD	
	VOLTAGE	AMPS
81-895630-000	24 VDC	2.0
81-895628-000	125 VDC	0.3
WK-895627-000	115 VAC	1.0

This literature is provided for informational purposes only. KIDDE-FENWAL, INC. assumes no responsibility for the product's suitability for a particular application. The product must be properly applied to work correctly. If you need more information on this product, or if you have a particular problem or question, contact KIDDE-FENWAL INC., Ashland, MA 01721. Telephone: (508) 881-2000

Kidde Fire Systems
 400 Main Street
 Ashland, MA 01721 USA
 Tel: (508) 881-2000
 Fax: (508) 881-8920
<http://www.kiddefiresystems.com>