



HF Electric Actuator

Description

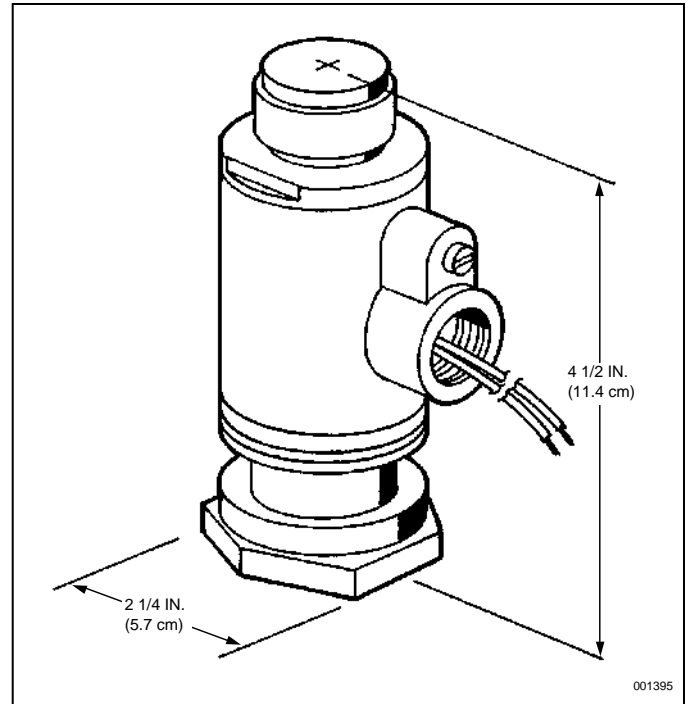
Electrical actuation of an agent cylinder is accomplished by an HF electric actuator interfaced through an AUTOPULSE Control System. This actuator can be used in hazardous environments where the ambient temperature range is between 0 °F to 130 °F (-18 °C to 54 °C). The HF electric actuator meets the requirements of N.E.C. Class I, Div. 1, Groups B, C, D and Class II, Div. 1, Groups E, F, G. A maximum of two HF electric actuators can be used on a single AUTOPULSE release circuit. When utilizing only one HF electric actuator, an in-line resistor, Part No. 73606, is required in the supervised release circuit.

The actuator specifications are:

Nominal Voltage	Rated Voltage	
	Minimum	Maximum
12 VDC @ 0.57 amps	10.4 VDC*	14.0 VDC

In auxiliary or override applications, a manual-local override valve actuator or a manual cable pull actuator can be installed on top of the HF electric actuator by removing the safety cap.

An arming tool is required to reset the actuator after operation. The actuator contains a standard 1/2 in. threaded female straight connector for electrical conduit hookup.



Shipping Assembly Part No.	Description
73327	HF electric actuator

Component	Material	Thread Size/Type	Approvals
HF Electric Actuator	Body: Brass Plunger Stainless Steel	1/2 in. Straight Female	UL (EX-2968) FM Approved

*Minimum operating voltage is 9.0 VDC.