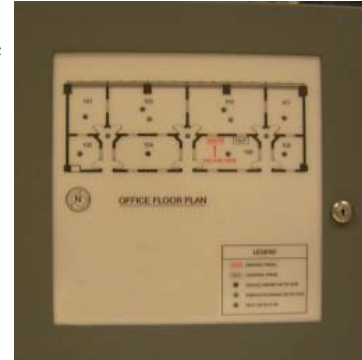


INTELLIGENT GRAPHIC ANNUNCIATORS

DESCRIPTION

Fike Intelligent Graphic Annunciators are designed to be used with Fike's intelligent control panels such as the Cheetah Xi and CyberCat systems. These annunciators provide a graphic display of the protected area using L.E.D.'s to indicate the location of smoke detectors or other intelligent devices. L.E.D.'s can be individually programmed to illuminate for selected individual addresses or zones for certain states such as alarm or trouble. These annunciator panels combine custom design with rugged construction. The display window is constructed of plexiglass over lexan and mounted in a steel door. The backbox is constructed of steel and houses all modules required for a custom designed panel. There are currently six basic sizes of enclosures available, each capable of being flush or surface mounted. Intelligent graphic annunciators are available in a black enclosure. The lexan comes in white with black text. Optional background colors are also available.



FEATURES

- Internal switch for system reset, silence, graphic lamp test or system acknowledge
- L.E.D.'s are completely configurable through C-Linx software.
- Custom design to accommodate individual floor plans.
- Six basic sizes available in black
- Surface or flush mounting with option trim ring
- Hinged door assembly with keyed lock
- Standard L.E.D. colors: Amber, Red, Green, Yellow
- Multi-color background available
- Efficient installation
- Modular circuit board design for expandability

SPECIFICATIONS*

* Specifications for 10-2411, Graphic Micro Controller Card

Operating Voltage Range:	15-30 VDC
Maximum Current:	Standby: 67 mA (all LEDs off)
	Alarm: 140 mA (all LEDs on)
Operating Temperature:	0° to 49° C (32° to 120° F) 93% RH

APPROVALS

- UL - S3217
- FM - 3032718
- City of Denver
- COA - 307-05-E (Cheetah Xi)
 - 490-04-E (Cybercat 1016/254)
 - 307-05-E VOL.2 (Cheetah Xi 50)
 - 490-04-E VOL.2 (Cybercat 50)
- CSFM - 7165-0900:137 (CyberCat Non-High Rise)
 - 7170-0900:148 (CyberCat High Rise)
 - 7165-0900:149 (Cheetah Xi Non-High Rise)

Form No. P.1.83.01-2

ORDERING INFORMATION

Fike P/N	Description
Complete Door Assemblies	
10-121-B	Graphic Annunciator 14" x 14" w/ 10" x 10" viewing window; Maximum 64 LEDS
10-122-B	Graphic Annunciator 24" x 24" w/ 20" x 20" viewing window; Maximum 384 LEDS
10-123H-B	Graphic Annunciator 36" x 24" w/ 32" x 20" viewing window; Maximum 512 LEDS
10-123V-B	Graphic Annunciator 24" x 36" w/ 20" x 32" viewing window; Maximum 512 LEDS
10-124H-B	Graphic Annunciator 36" x 30" w/ 32" x 26" viewing window; Maximum 640 LEDS
10-124V-B	Graphic Annunciator 30" x 36" w/ 26" x 32" viewing window; Maximum 640 LEDS
Replacement Door	
10-2598-B	Graphic Annunciator Door 14" x 14" w/ 10" x 10" viewing window
10-2599-B	Graphic Annunciator Door 24" x 24" w/ 20" x 20" viewing window
10-2600H-B	Graphic Annunciator Door 36" x 24" w/ 32" x 20" viewing window
10-2600V-B	Graphic Annunciator Door 24" x 36" w/ 20" x 32" viewing window
10-2601H-B	Graphic Annunciator Door 36" x 30" w/ 32" x 26" viewing window
10-2601V-B	Graphic Annunciator Door 30" x 36" w/ 26" x 32" viewing window
Backbox	
10-2588	Backbox 14" x 14" for P/N 10-121-B
10-2589	Backbox 24" x 24" for P/N 10-122-B
10-2590H-B	Backbox 36" x 24" for P/N 10-123H-B
10-2590V-B	Backbox 24" x 36" for P/N 10-123V-B
10-2591H-B	Backbox 36" x 30" for P/N 10-124H-B
10-2591V-B	Backbox 30" x 36" for P/N 10-124V-B
Miscellaneous	
10-2411	Graphic Micro Controller Card; Up to 256 LEDs, compatible with Cybercat or Cheetah Xi control systems. Maximum of 4 can be installed per enclosure.
10-2086	Switch Card; Provides 4 programmable switches
10-1858	L.E.D. Driver Card #1; For use of up to the first 128 L.E.D.'s connected to the micro control card
10-1859	L.E.D. Driver Card #2; For use of up to the second 128 L.E.D.'s connected to the micro control card
10-1903	Cable Assembly Micro-Driver 24"
10-1950	Cable Assembly Micro-Driver 48"
02-3029	Cable Assembly Micro-Switch 24"
02-3030	Cable Assembly Micro-Micro 10"
10-2611-B	Trim Ring for 14" x 14"
10-2612-B	Trim Ring for 24" x 24"
10-2613-B	Trim Ring for 36" x 24"
10-2614-B	Trim Ring for 36" x 30"
L.E.D.'s	
02-3009	Red L.E.D.
02-3038	Amber L.E.D.
02-3013	Green L.E.D.
02-3247	Yellow L.E.D.

Notes:

- Complete door assemblies includes: one micro card, one driver card, one switch card and appropriate cables. Backbox and L.E.D.'s must be ordered separately.
- The number of L.E.D.'s can vary depending on the graphical layout. Please contact Fike to determine the maximum L.E.D.'s for your customized application.
- Other custom sizes are available.

