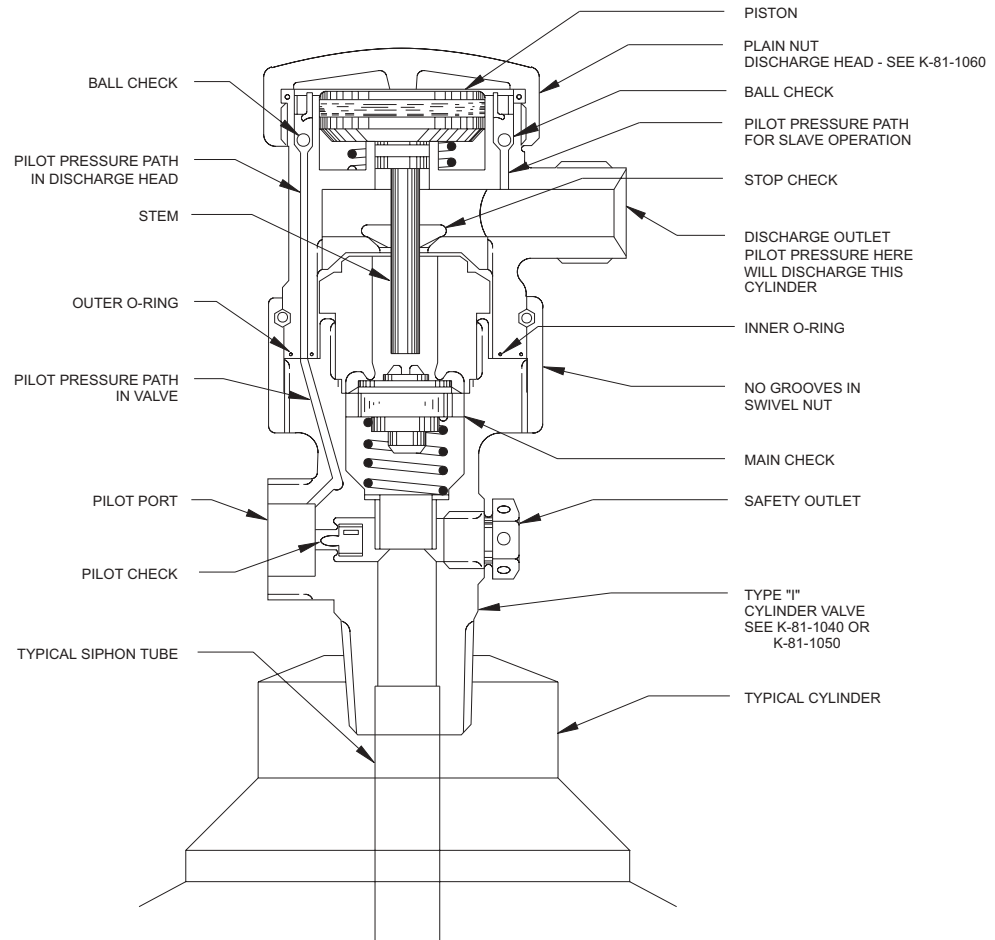


CO₂ Component Description

Assembly of Plain Nut Discharge Head to Type "I" Cylinder Valve

Effective: April 2002
K-81-1061



WARNING

Never connect discharge head to cylinder valve without flex loop attached to discharge outlet and the cylinder properly secured and connected to system piping. Arrangement as shown is for illustration purposes only.

PRESSURE RATING:
2400 PSIG TO 2800 PSIG (165 BAR TO 193 BAR)

This literature is provided for informational purposes only. KIDDE-FENWAL, INC. assumes no responsibility for the product's suitability for a particular application. The product must be properly applied to work correctly. If you need more information on this product, or if you have a particular problem or question, contact KIDDE-FENWAL INC., Ashland, MA 01721. Telephone: (508) 881-2000

Kidde Fire Systems
400 Main Street
Ashland, MA 01721 USA
Tel: (508) 881-2000
Fax: (508) 881-8920
<http://www.kiddefiresystems.com>