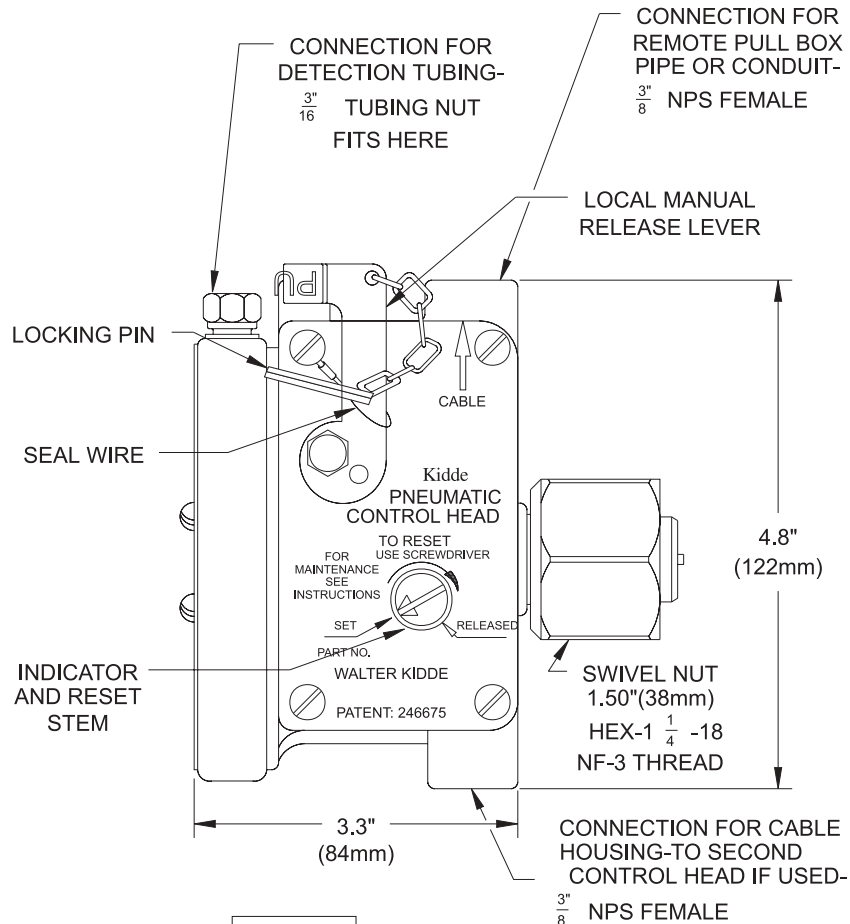


CO₂ Component Description

Pneumatic Control Head

Effective: April 2002

K-81-7010



PART NUMBER	CONTROL HEAD
872318	1 IN.-40 SEC.
872335	3 IN.-5 SEC.
872365	6 IN.-5 SEC.
872362	6 IN.-2 SEC.
872310	1 IN.-TANDEM
872330	3 IN.-TANDEM
872360	6 IN.-TANDEM

This literature is provided for informational purposes only. KIDDE-FENWAL, INC. assumes no responsibility for the product's suitability for a particular application. The product must be properly applied to work correctly. If you need more information on this product, or if you have a particular problem or question, contact KIDDE-FENWAL INC., Ashland, MA 01721. Telephone: (508) 881-2000

Kidde Fire Systems
 400 Main Street
 Ashland, MA 01721 USA
 Tel: (508) 881-2000
 Fax: (508) 881-8920
<http://www.kiddefiresystems.com>