



Pressure Switch – 3PST

Description

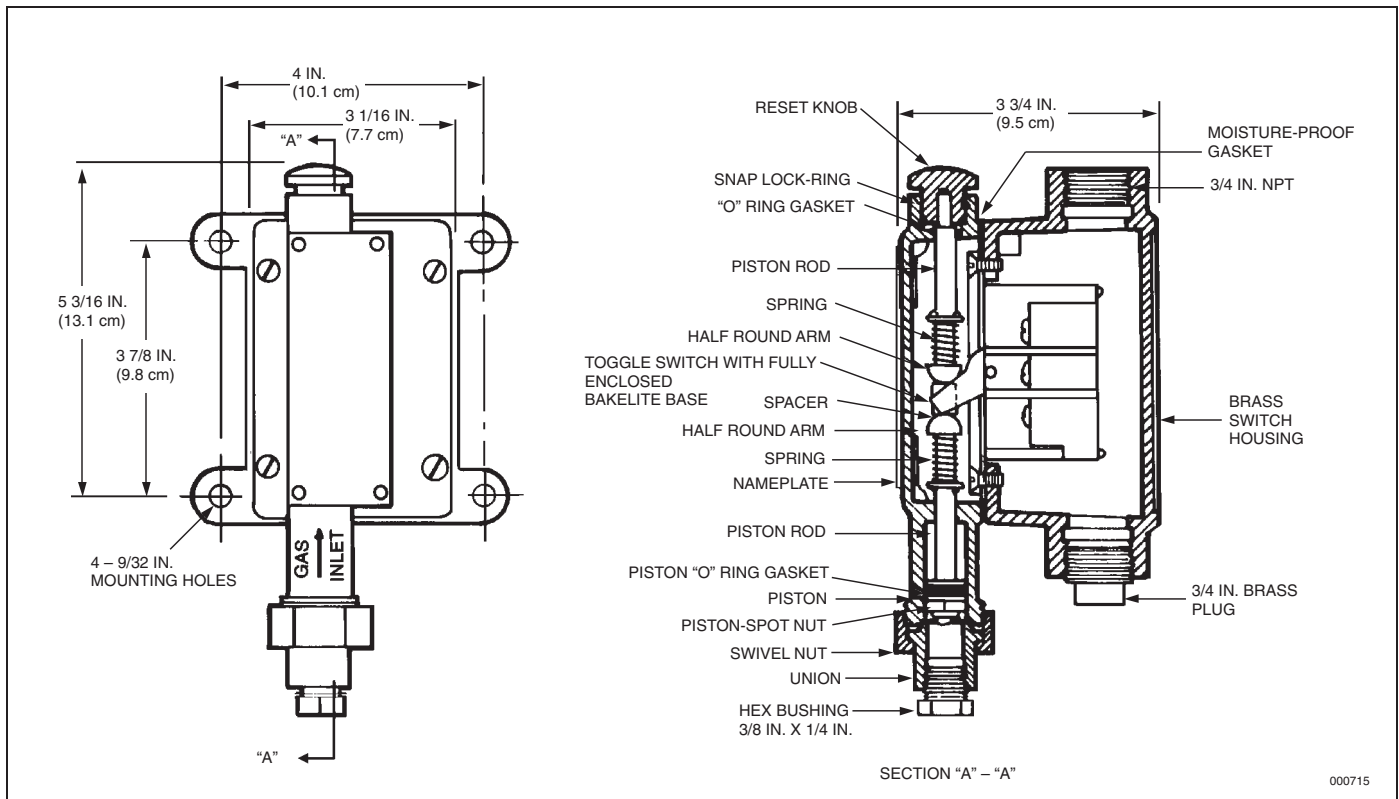
The pressure switch is operated by the INERGEN® agent pressure when the system is discharged. The pressure switch can be used to open or close electrical circuits to either shut down equipment or turn on lights or alarms. The three pole, single throw (3PST) pressure switch is constructed with a gasketed, water tight housing. The switch may be used for 3 phase wiring requirements. The housing is constructed of malleable iron, painted red. A 1/4 in. NPT pressure inlet is used to connect the 1/4 in. pipe from the INERGEN system.

The pressure switch can be installed either before or after the pressure reducer in the distribution piping.

Minimum operating pressure is 50 PSI (3.5 bar)

Shipping Assembly Part No.	Description
842344	Pressure switch – 3PST

Component	Material	Thread Size/Type	Electrical Rating	Approvals
Pressure Switch 3PST	Switch: BAKELITE Housing: Malleable Iron Piston: Brass	Conduit Inlet: 3/4 in. NPT Female Pressure Inlet: 1/4 in. NPT Female	30A - 240 VAC 20A - 600 VAC 3 HP - 120 VAC 7.5 HP - 240 VAC 15 HP - 600 VAC 3 PHASE AC	UL Listed (EX-4510) FM Approved



BAKELITE is a trademark of Union Carbide Corp.

ANSUL and INERGEN are trademarks of Ansul Incorporated or its affiliates.