



## Pressure Switch DPDT – Explosion-Proof

### Description

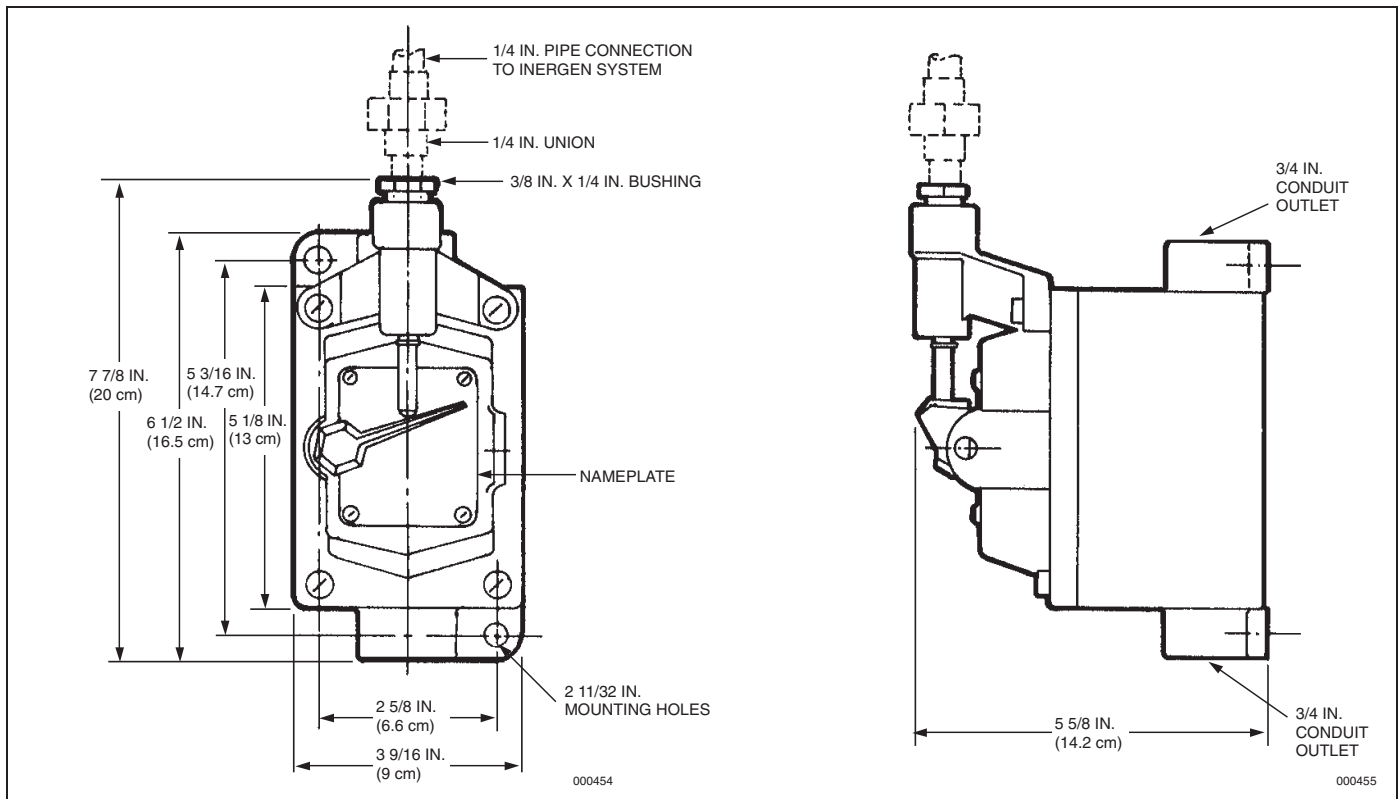
The pressure switch is operated by the INERGEN® agent pressure when the system is discharged. The pressure switch can be used to open or close electrical circuits to either shut down equipment or turn on lights or alarms. The double pole, double throw (DPDT) pressure switch is constructed with an explosion-proof housing suitable for hazardous environments. A 1/4 in. NPT pressure inlet is used to connect the 1/4 in. pipe from the INERGEN system.

The pressure switch can be installed either before or after the pressure reducer in the distribution piping.

Minimum operating pressure is 50 PSI (3.5 bar)

Shipping Assembly Part No.	Description
843241	Pressure switch – DPDT

Component	Material	Thread Size/Type	Electrical Rating	Approvals
Pressure Switch DPDT	Housing: Malleable Iron	Conduit Inlet: 3/4 in. NPT Female Pressure Inlet: 1/4 in. NPT Female	10A - 125 VAC 5A - 250 VAC	UL Listed (EX-4510) FM Approved



NOTE: Suitable for hazardous locations, Class I, Division I, Groups C, D, and Class II, Division I, Groups E, F, G.

ANSUL and INERGEN are trademarks of Ansul Incorporated or its affiliates.