



Features

- 8 programmable status zones
- 8 programmable system or zone output functions
- Zone Active and Trouble LEDs
- Device input Power LED
- Buzzer and LED lamp test
- Local audible buzzer (can be silenced locally)
- Protected from unauthorized use with key lock
- Supports NFPA Style 4 or Style 6 SLC wiring
- Surface or recess wall mounting
- Convenient power in / power out connectors
- Robust fault tolerant communications
- Tamper-proof zone identification card

Listings/Approvals

- UL 864 9th Edition

Product Description

The PROACTIV® Annunciator and Control Module (ACM) provides for the remote display of a zone's status or remote activation of a system or zone function.

The ACM communicates across the Ancillary SLC of the PROACTIV Fire Alarm Control Panel (FACP) and is mounted inside a surface or recess style electrical Gang Box. A tamper-proof slide-in label is used to identify each segment.

Function

Each of the ACM's eight segments can be programmed to either:

- monitor a zone
- perform a system function
- perform a zone function

Monitor a zone

When a segment is configured for monitoring, the indicators display the status (Alarm, Supervisory or Trouble) of the assigned user or system zone.

For Suppression Zones, any stage of suppression can be represented.

Perform a system function

A segment can be configured to perform one of the following system functions:

Silence	Silences outputs on the entire system
Drill	Drills the entire system
Reset	Resets the system

Perform a zone function

A segment can be configured to perform one of the following zone functions:

Deactivate Zone Interlocking	Turns off the zone interlocking. This prevents the zone outputs from being activated.
Activate Zone Output Circuits	Turns on the output circuits associated with the zone.
Deactivate Zone Output Circuits	Turns off the output circuits associated with the zone.

PROACTIV® Annunciator & Control Module

VFA-203

Operation

Segment configured to monitor a zone

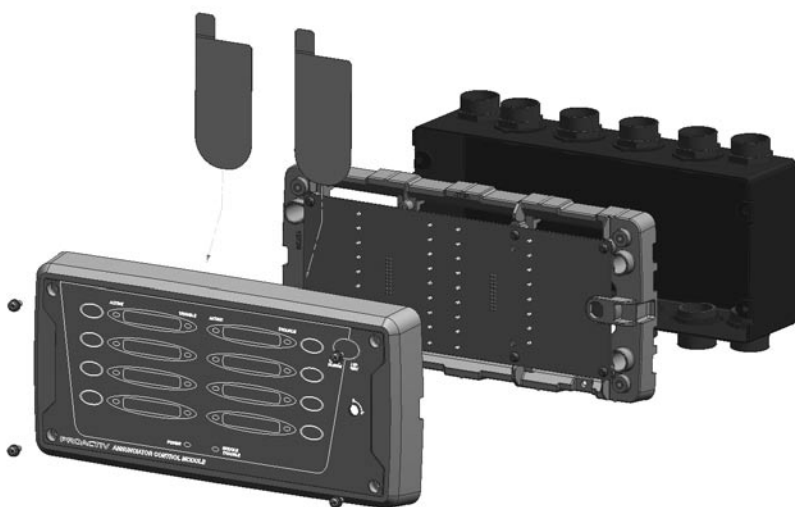
The 'ACTIVE' LED (red) indicates an active (usually Alarm) condition and the 'TROUBLE' LED (amber) indicates a Trouble condition on the zone.

The buzzer will sound when the zone becomes Active or a Trouble condition is present. The user can silence the buzzer by pressing the 'LOCAL SILENCE' button.

Segment configured to perform a system or zone function

Pressing a segment button requests the FACP to perform the assigned function. If the function is currently active, pressing the button will restore normal operation.

The ACTIVE LED (red) will be on when the function is active within the system.



Ordering Information

PROACTIV Ancillary Devices

Description	Model
Remote Annunciator (RA)	VFA-213
Fire Alarm Annunciator (FAA)	VFA-201
Fire Alarm Annunciator – Open Collector (FAA–OC)	VFA-205
Annunciator & Control Module (ACM)	VFA-203
Output Control Module – NAC (OCM–NAC) ¹	VFA-209
OCM–NAC Expansion Kit	PSP-2010
Output Control Module – Contact (OCM–Contact) ²	VFA-211
OCM–Contact Expansion Kit	PSP-2012
Agent Release Module (ARM) ³	VFA-207
ARM Expansion Kit	PSP-2014

¹ The OCM–NAC supports two expansion kits (PSP-2010) and includes one expansion kit as standard.

² The OCM–Contact supports two expansion kits (PSP-2012) and includes one expansion kit as standard.

³ The ARM supports two expansion kits (PSP-2014) and includes one expansion kit as standard.

Note: Not all of the above products are available in all regions.
Consult your local distributor or Xtralis office for more information.

www.xtralis.com

The Americas +1 781 740 2223 **Asia** +852 2297 2438 **Australia and New Zealand** +61 3 9936 7000
Continental Europe +41 55 285 99 99 **UK and the Middle East** +44 1442 242 330

The contents of this document are provided on an "as is" basis. No representation or warranty (either express or implied) is made as to the completeness, accuracy or reliability of the contents of this document. The manufacturer reserves the right to change designs or specifications without obligation and without further notice. Except as otherwise provided, all warranties, express or implied, including without limitation any implied warranties of merchantability and fitness for a particular purpose are expressly excluded.

This document includes registered and unregistered trademarks. All trademarks displayed are the trademarks of their respective owners. Your use of this document does not constitute or create a licence or any other right to use the name and/or trademark and/or label.

This document is subject to copyright owned by Xtralis AG ("Xtralis"). You agree not to copy, communicate to the public, adapt, distribute, transfer, sell, modify or publish any contents of this document without the express prior written consent of Xtralis.

Doc. no. 12730_02

Part: 29040

Specifications

Device Type

PROACTIV Ancillary device

Ancillary SLC

NFPA Style 4 or Style 6
Supports a maximum of 31 nodes at a total distance of 3000 feet (1 kilometer)

Power Supply

UL1481 Listed 24 VDC power supply

Supply Voltage

24 VDC

Current Consumption @ 24 VDC

35 mA maximum in Standby
60 mA maximum in Alarm

Dimensions (WH)

11.5 in x 5.4 in (292 mm x 138 mm)

Operating Environment

Dry Indoor
32°F to 120°F (0° to 49°C)
20% to 95% RH, non-condensing

Cable Termination

Screw terminal blocks 18 – 14 AWG
(0.2 to 2.0 mm²)

Mounting

UL Listed metallic Gang Box

