

# Network Interface Module

## FEATURES

- **UL Listed**
- **FM Approved**
- **Panel to Panel Communications**
- **Total field programmability via panel front display, PEGAsys Configuration Software or a “dumb” terminal**
- **Interconnects up to 32 PEGAsys panels in NFPA style 4 or 7 configuration**
- **Backward compatible with all existing PEGAsys Control Panels**
- **Network operation from PEGAsys control panels or remote displays**

## DESCRIPTION

The PEGAsys™ Network Interface Module (P/N 76-100036-500) provides true peer-to-peer functionality when installed into the PEGAsys Central Control Module (P/N 76-100008-XXX) mounted in the PEGAsys Control Panel. Added functionality is provided when the Kidde® Remote Display Control Module annunciator(s) (P/N 76-300000-501) are connected to the individual control panels and, hence, into the interconnection scheme.

The network provides several convenient interconnect programming schemes wherein control panels can be configured individually or within created groups of control panels.

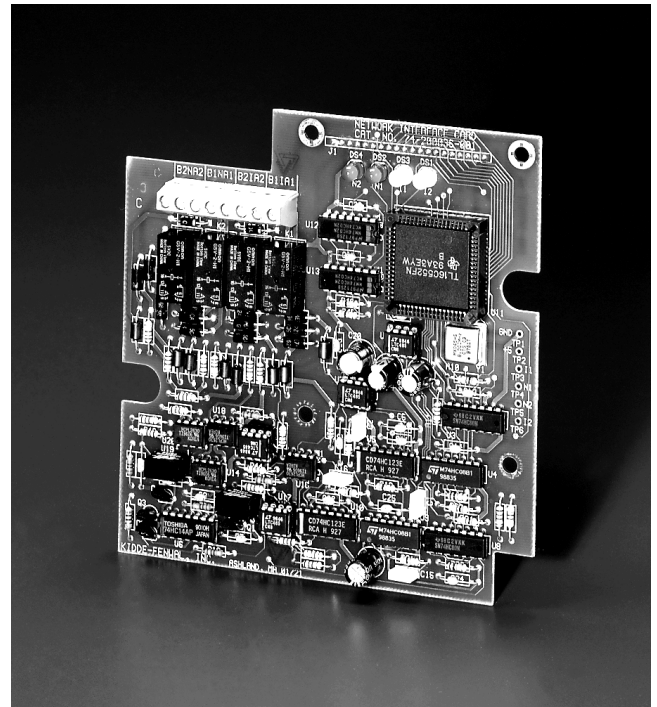
When utilizing the grouping configuration, the interconnection shall automatically provide shared alarm and trouble responses. The programmable shared responses are: acknowledge, silence, reset, event logging and logic statements. Operator events can be activated into the interconnection via the control panels or any annunciator. A location address and programmable description shall identify the panel initiating the event.

Event Output Control (EOC) programming statements can be entered at individual PEGAsys panels, panel by panel, using PEGAsys Configuration Software (PCS). After this is done, an input on one panel can activate an output on any other panel, or on all other networked panels programmed to receive the input.

Consistent with peer-to-peer operation and the interconnect wiring style, a panel that becomes disabled shall be automatically isolated from its shared panel(s) and the shared panels will exhibit a network message identifying the affected panel and the fault type. However, the shared panels that are not affected by a fault will remain functional and interconnected.

## PHYSICAL

A PEGAsys Network Interface Module “daughter” card when added to an appropriate Central Control Module (P/N 76-100008-XXX) provides peer-to-peer interconnection for up to 32 PEGAsys Control Panels. All existing



PEGAsys Control Panels are capable of accepting the required CCM and the network module.

Interconnect NFPA style 4 is accomplished using one pair #18 AWG, twisted/shield wire. Style 7 interconnect will require two pair #18 AWG, twisted/shielded wire and provides protection against a single wire-to-wire short or open fault.

Communication is RS-485 with a maximum spacing of 4000 ft. between panels and nominal 2.5 second panel to panel response with style 4 wire. This timing increases slightly when operating on a redundant pair under a fault condition.

All electrical and physical characteristics and listings of the network module are consistent with the PEGAsys host panel.

## TECHNICAL SPECIFICATION

Input Voltage: 5 Vdc  
Operating Current: 250 mA  
Operating Temp. 32°F to 120°F (0°C to 49°C)  
Communication: RS-485  
Style 4 or Style 7  
18 AWG TSP, 4000 ft. Maximum  
between PEGAsys panels

## ORDERING INFORMATION

Part Number	Description
76-100036-500	PEGAsys Network Interface Module Installation Kit

## PROGRAMMING

Modem Connection: Not available  
Field Programming: Local and network programs  
entered at individual panels

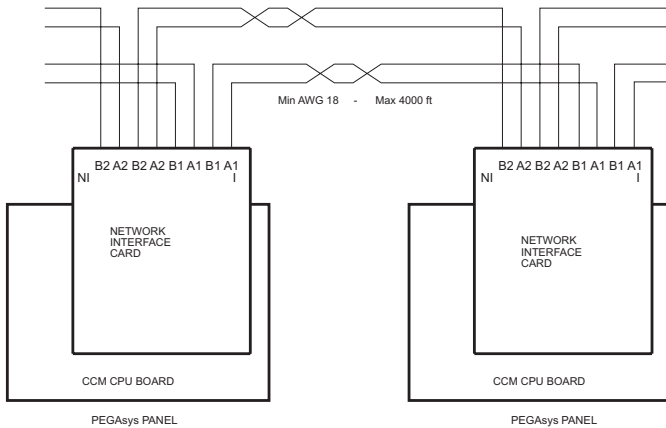


Figure 1. Typical System Block Diagram

Kidde is a registered trademark of Kidde-Fenwal, Inc.  
PEGAsys is a trademark of Kidde-Fenwal, Inc.

This literature is provided for informational purposes only. KIDDE-FENWAL, INC. assumes no responsibility for the product's suitability for a particular application. The product must be properly applied to work correctly. If you need more information on this product, or if you have a particular problem or question, contact KIDDE-FENWAL, INC., Ashland, MA 01721. Telephone: (508) 881-2000.