

CO₂ Component Description

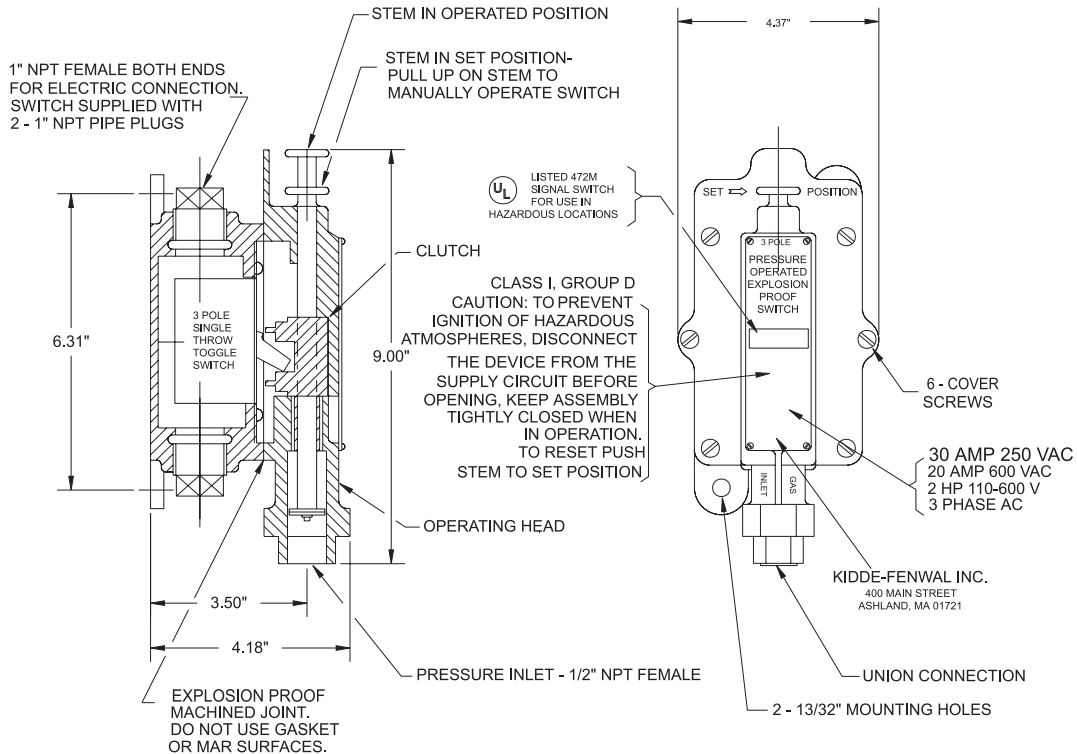


A UTC Fire & Security Company

Pressure Operated Switch, Explosion Proof

Effective: February 2007
K-81-5190

P/N: 981332



MATERIALS

BASE: MALLEABLE IRON

OPERATING HEAD: CAST BRONZE

NOTES:

1. Toggle switch may be mounted in base for either N.O. to N.C. or N.C. to N.O. contact transfer upon operation. Illustration shows position of toggle when switch is in set position.
2. Any load connection to the switch must not exceed the switch rating, and shall utilize a suitable protection device (i.e., circuit breaker, fuse).
3. Remove operating head to make electrical connections to toggle switch. When replacing operating head, ensure that toggle engages clutch, and tighten cover screws securely.

This literature is provided for informational purposes only. KIDDE-FENWAL, INC. assumes no responsibility for the product's suitability for a particular application. The product must be properly applied to work correctly. If you need more information on this product, or if you have a particular problem or question, contact KIDDE-FENWAL, INC., Ashland, MA 01721. Telephone: (508) 881-2000.