

Industrial Dry Chemical

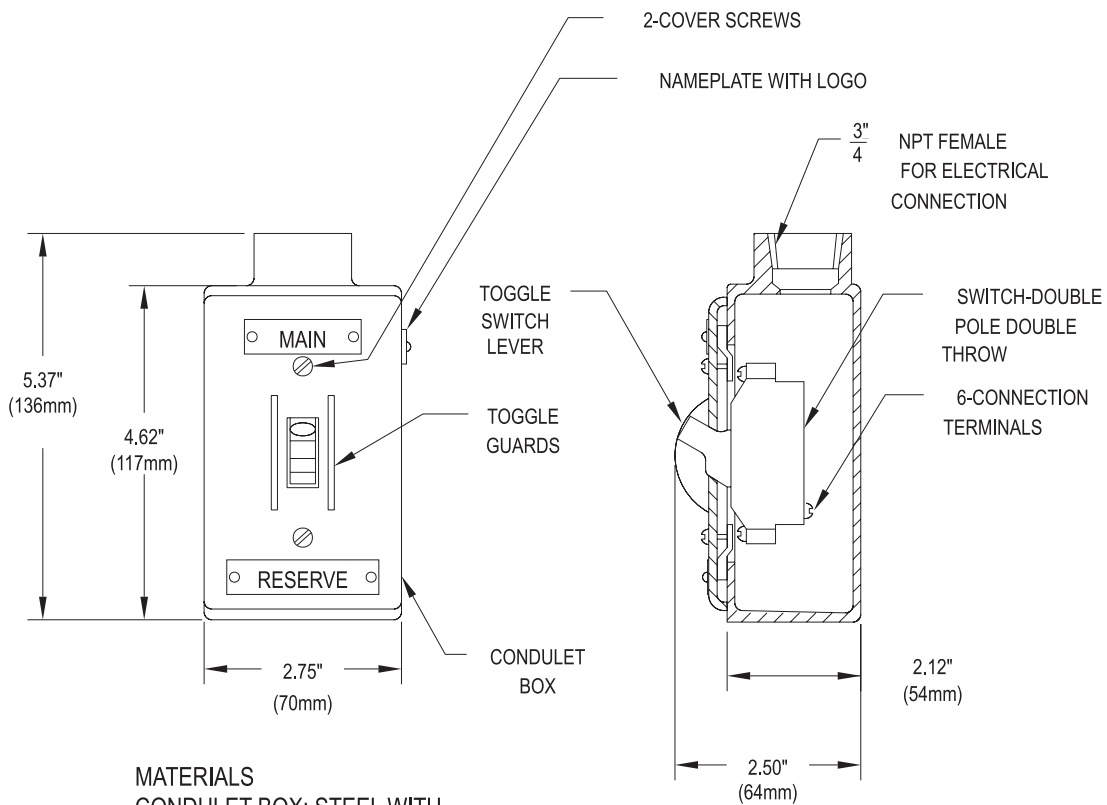
Main to Reserve Transfer Switch

Effective: March 2007
K-83-026

P/N 802398

DESCRIPTION

The Main-to-Reserve Transfer Switch is installed on electrically activated systems having main and reserve cylinders. The switch is normally placed in the "main" position, but, in the event of the main extinguishing system discharge, the switch is placed in the "reserve" position to provide uninterrupted fire protection while the main system is being recharged.



MATERIALS
CONDULET BOX: STEEL WITH RED ENAMEL FINISH
TOGGLE SWITCH LEVER: BAKELITE



WIRING DIAGRAM

This literature is provided for informational purposes only. KIDDE-FENWAL, INC. assumes no responsibility for the product's suitability for a particular application. The product must be properly applied to work correctly. If you need more information on this product, or if you have a particular problem or question, contact KIDDE-FENWAL, INC., Ashland, MA 01721. Telephone: (508) 881-2000.

Kidde Fire Systems
A UTC Fire & Security Company
400 Main Street
Ashland, MA 01721
Ph: 508.881.2000
Fax: 508.881.8920
www.kiddefiresystems.com