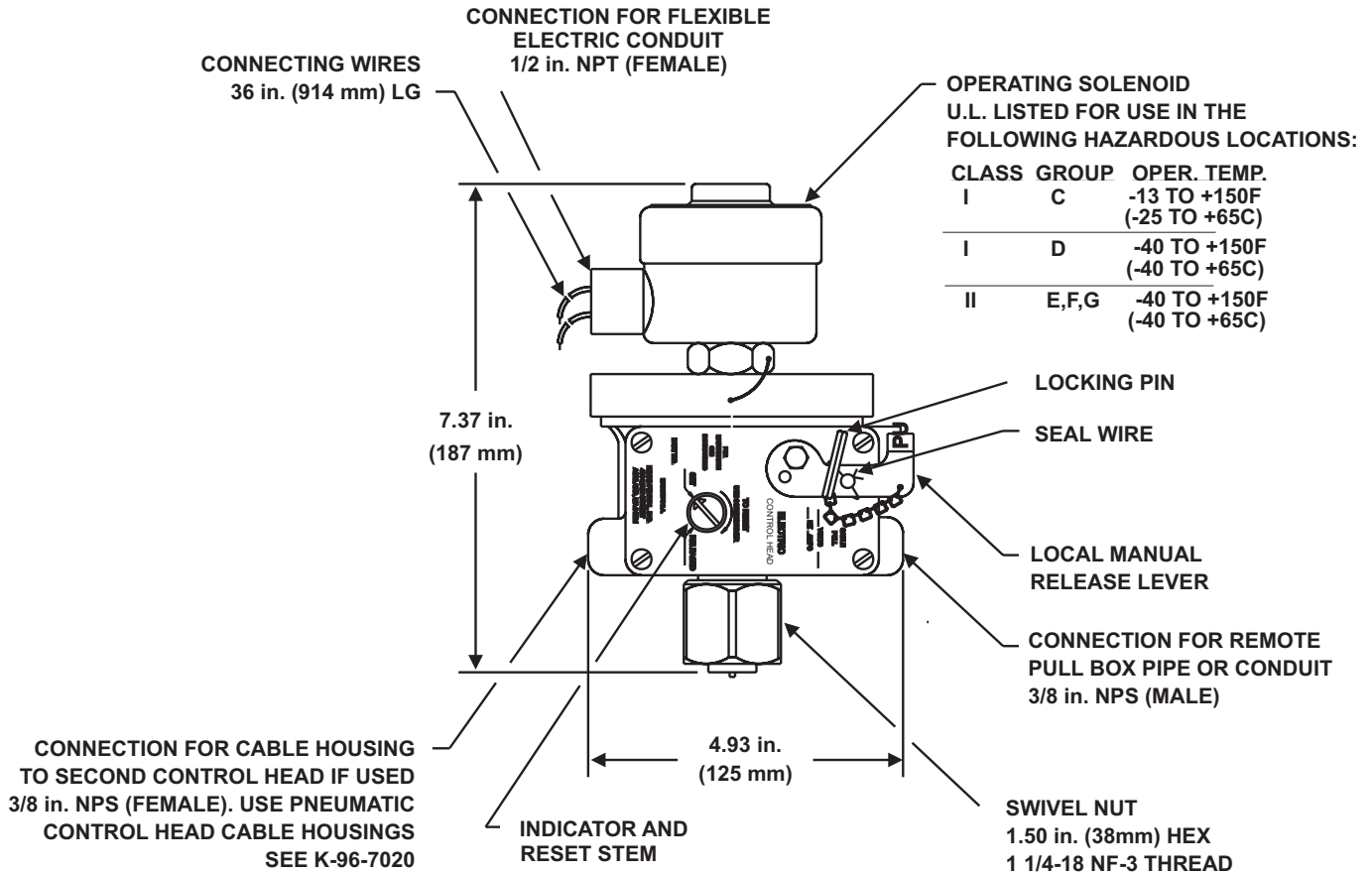


FE-13 Component Description



Electric and Cable Operated Control Head Explosion Proof Solenoid

Effective: April 2007
K-96-6030



Part Number	Control Head	
	Voltage	Power Consumption
897494	24 Vdc	33 Watts
897560	120 Vac	15.4 Watts

This literature is provided for informational purposes only. KIDDE-FENWAL, INC. assumes no responsibility for the product's suitability for a particular application. The product must be properly applied to work correctly. If you need more information on this product, or if you have a particular problem or question, contact KIDDE-FENWAL, INC., Ashland, MA 01721. Telephone: (508) 881-2000.

Kidde Fire Systems
A UTC Fire & Security Company
400 Main Street
Ashland, MA 01721
Ph: 508.881.2000
Fax: 508.881.8920
www.kiddefiresystems.com