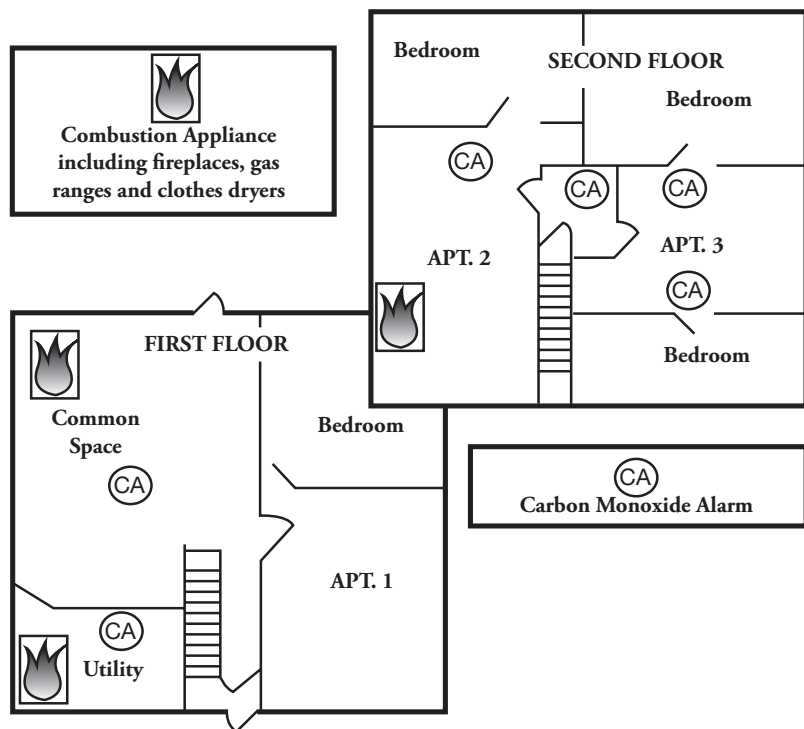


Carbon Monoxide Detectors



Fact: Beginning February 1, 2011, the State of Wisconsin requires all houses, duplexes, and multifamily dwellings to have carbon monoxide detectors.

Carbon Monoxide (CO) detectors must be installed in the basement and on each floor level. The CO detectors need not be installed in attics, garages, or storage areas. The CO detectors may be separate or combination units, powered by batteries, or in the case of new construction, tied into the home's electrical system, interconnected with battery backup. Installation must follow manufacturers' instructions. Those instructions are provided with new CO detectors and can usually be found on the manufacturers' web sites. The manufacturer should be identified on the detector. Detectors used in Wisconsin must be approved by Underwriters Laboratories.

For your safety, please remember:

- Carbon monoxide detectors should be tested weekly.
- Replace detectors according to manufacturer instructions.
 - Stand-alone carbon monoxide detectors should be replaced within five years.
 - Combination carbon monoxide and smoke detectors should be replaced within five years.
 - Smoke detectors should be replaced within ten years. The actual life span may be shorter than this depending on environmental conditions, and, therefore, replaced more frequently.
- Replace batteries twice a year. West Bend recommends changing them at daylight savings time or at holidays that are six months apart, such as Easter and Halloween.
- Detectors should never be disconnected or unplugged.
- Batteries should never be removed for other uses.

A carbon monoxide detector is required:

- In the basement if there is a fuel-burning furnace or appliance there.
- Within 75 feet of fuel-burning appliances in areas of the home not used for sleeping (*example: gas stove or gas dryer*).
- Within 15 feet of each sleeping area.
- Within common hallways that are within 75 feet of a dwelling unit with fuel-burning appliance.
- Inside any apartment unit that has an attached garage.

These sources provide some guidance, as well as more details on carbon monoxide detectors.

<https://www.wra.org/WREM/APR10/CarbonMonoxideDetectorLaw/dsps.wi.gov/sb/docs/SB-UdcAlarmsFeb11.pdf>

<http://votesmart.org/billtext/28757.pdf>

<http://dsps.wi.gov/sb/docs/SB-UdcAlarmsFeb11.pdf>

