

LandfillGrade™ Management System



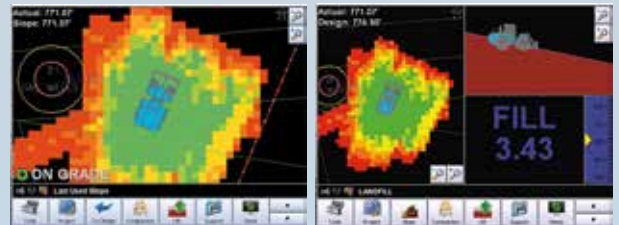
Extend the life of any landfill

Designed for Landfill Compactors, Dozers and Excavators

- Track your compaction in real time with color mapping using pass counts or vertical deflection
- Share data real-time between two machines with Dynamic Data Exchange (DDE) for maximum productivity
- Reduce airspace, maximize compaction reaching optimum density in less time
- Easily generate Airspace Utilization Factor (AUF), density and volume reports
- Minimize daily cover
- Analyze productivity and report from anywhere



GPS-powered machine guidance takes the guesswork out of landfill compaction and grading



Experts in Machine Control
Applications since 1996
- Mining - Landfill - Piling - Dredging -
- Construction - Contract Drilling -
- Custom Applications -

BREAK NEW GROUND

Extend the Life of Any Landfill

Carlson Landfill Grade and Carlson Command are tools that work together to help landfills optimize their airspace usage while minimizing machine usage. Carlson Grade provides Operators with a better understanding of their compaction levels to optimize their productivity and minimize pass counts. All data is sent to Carlson Command for Real-Time Machine Views, Report Generation and Scheduling, Data Analysis, and Historical Playback

Key Features

- Eliminate overfill of outer design slopes
- True recording of actual material placement
- Avoidance Zones such as gas wells and hazardous material placement
- Daily density calculations through scale house weight & import
- Forward and Reverse Compaction
- Carlson Streaming connects machines and ope
- Remote monitoring of machines and material placement
- Historical playback for machines and material placement
- Ability to collect and stake points

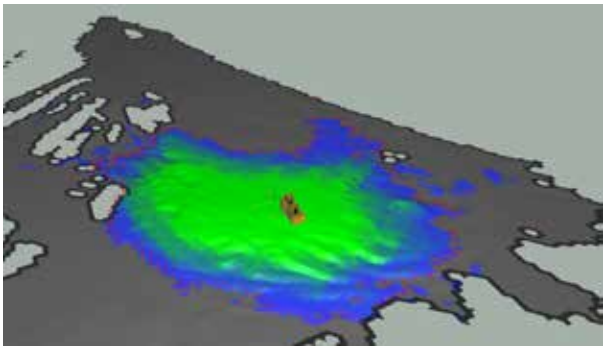
Special Features

- Customizable screens
- Support for most all GPS/GNSS receivers
- Direct import of .dwg, .dxf, TN3, GC3, LN3, TIN, GRD and more...
- Operator display shows Compaction or Machine Pass Counts via color map

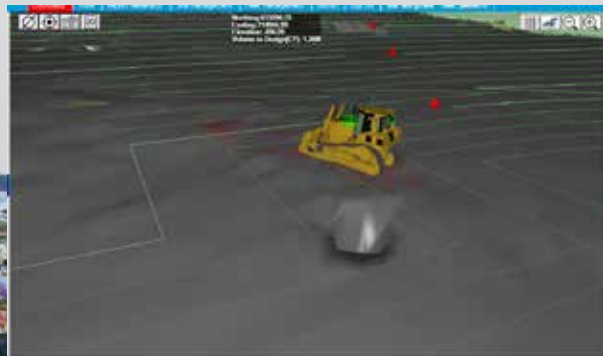
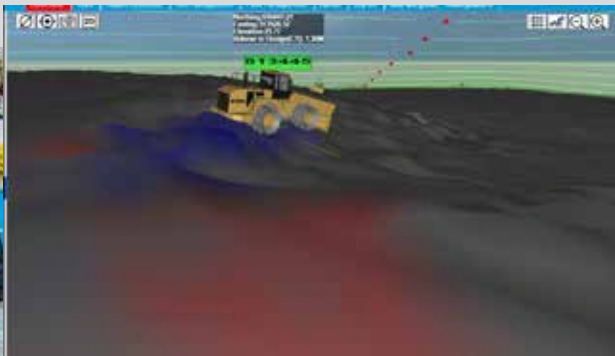
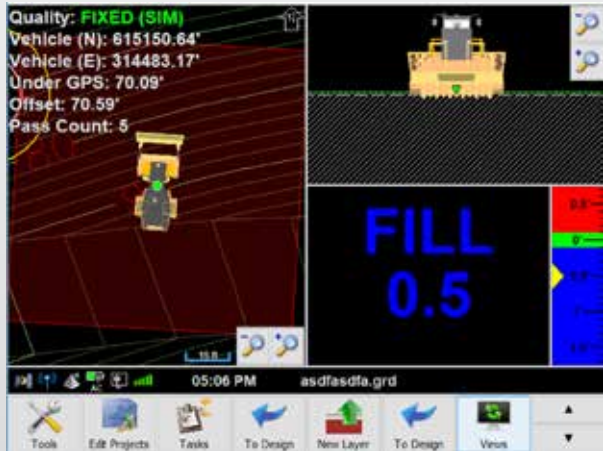
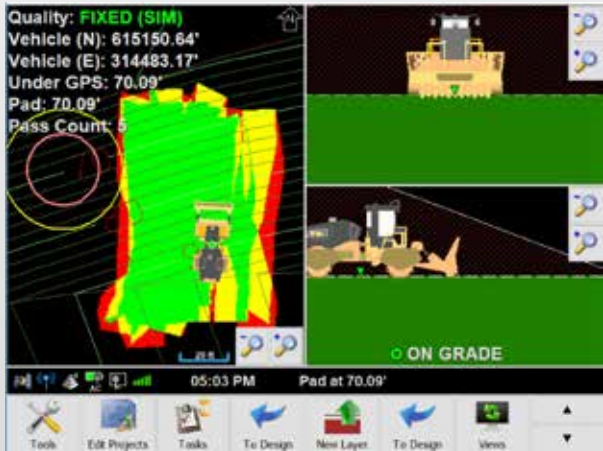
One the Site

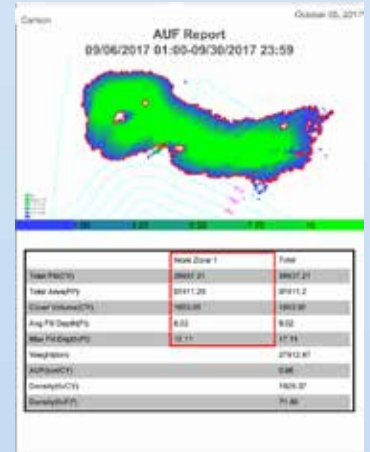
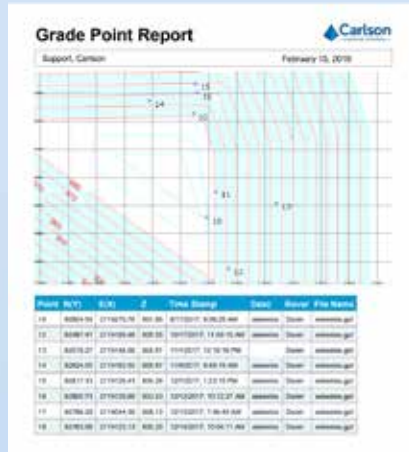
- Works with Man or Machine
- Eliminates unnecessary passes
- Reaches optimum density is less time
- Provides real-time operator grade guidance
- Gives real-time position anywhere on the site
- Allows for stakeless grading
- Manages Leachate - accurate & easy slope designs manage water runoff minimizing leachate for disposal or treatment





“Simple and sensible machine control for the rest of us”





In your office or remote location

- Daily density reports
- Volume reports
- Efficiency reports
- Daily work area reports
- Real-time Cut/Fill color map of the site in your office
- Replay machine movements
- Report hazardous waste locations
- Manage machine files

