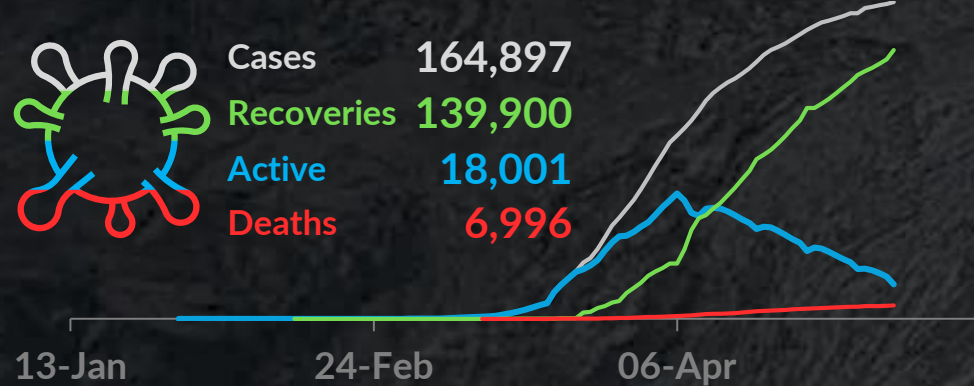




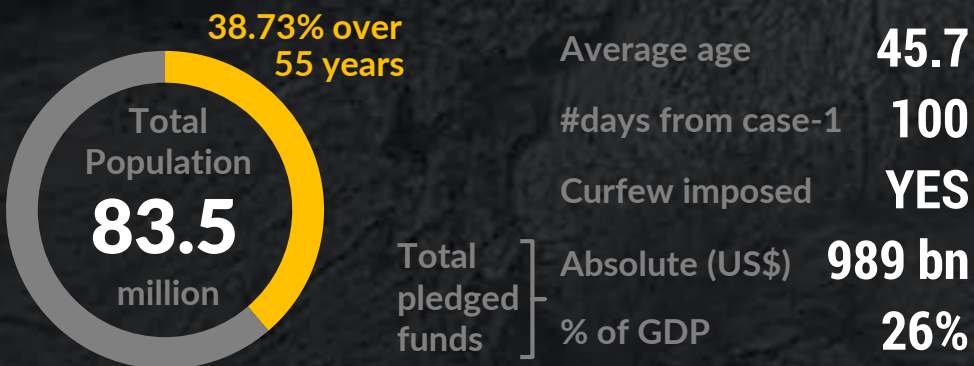
Germany: COVID-19 Updates

EPIDEMIOLOGICAL INFO

Data as per 6th of May 2020



DEMOGRAPHICS AND MITIGATION MEASURES



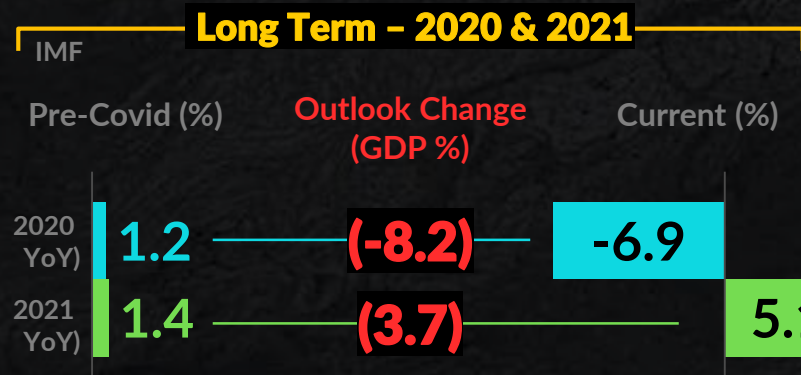
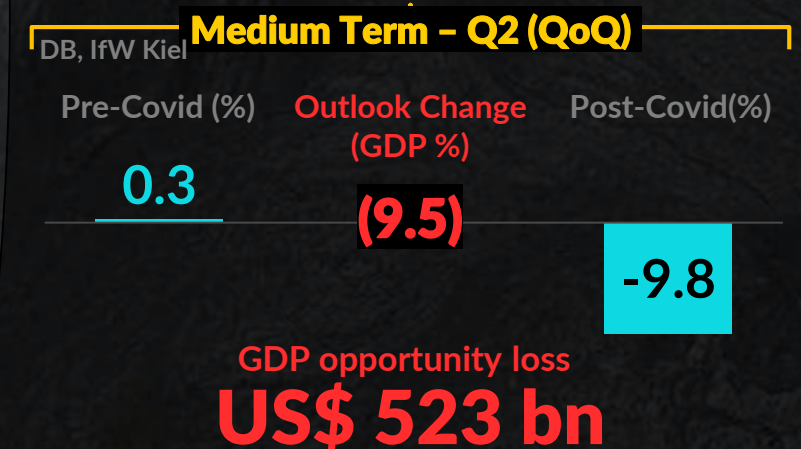
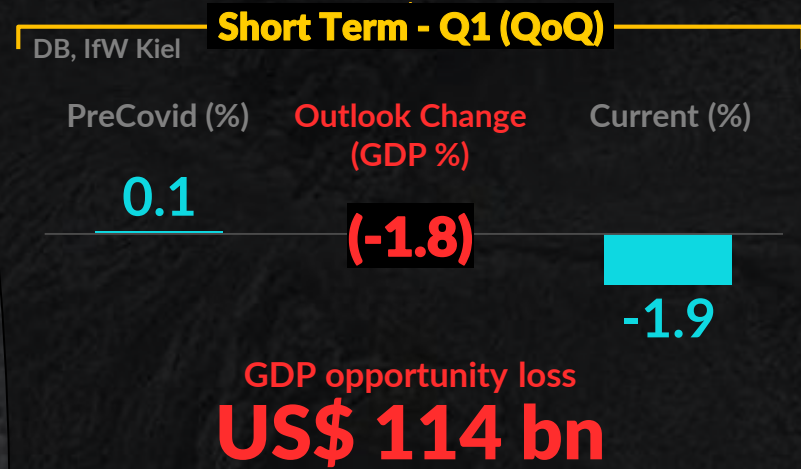
HC SYSTEM CAPACITY

HC spending per capita (USD) **5,840**

C19 health crisis equipment (Yearly import) **70.5 bn**

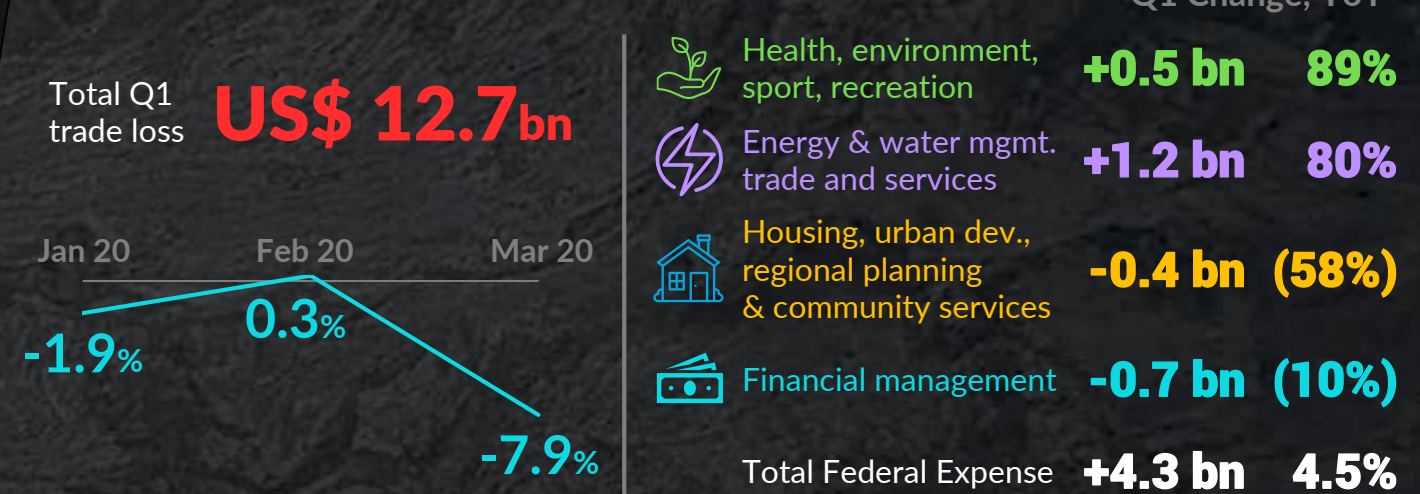
8 Beds
0.34 ICU
4.2 Doctors
13 Nurses
 per 1,000 population

IMPACT ON EXPECTED GDP GROWTH



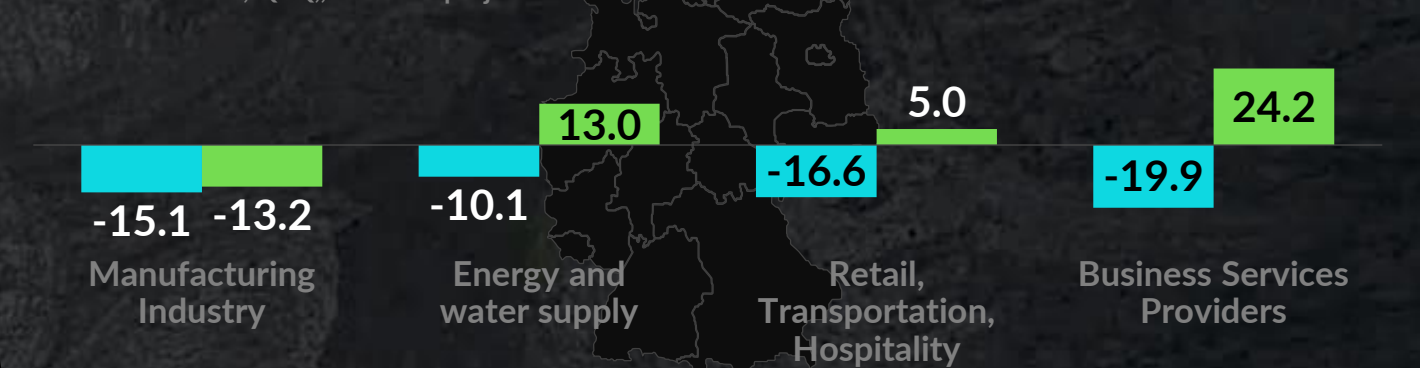
IMPACT ON TRADE AND GOV EXPENDITURE

Q1 change, YoY, Destatis, MoF,



IMPACT BY SECTOR

GDP Growth in %, QoQ,, IfW Kiel projections



MAIN MACRO INDICATORS

2020, IMF

Unemployment (%)	3.9	Inflation average consumer prices (Δ%)	0.3	Government net lending/borrowing (GDP %)	-5.5	Current account balance (GDP %)	6.6
------------------	-----	--	-----	--	------	---------------------------------	-----