

SYSPRO ERP

# The Possibilities are Infinite



0100 2345  
2345 0100  
0100 2345  
2345 0100



0100 2345  
2345 0100  
0100 2345  
2345 0100

01

02

new technologies emerge that re-define the  
way businesses work





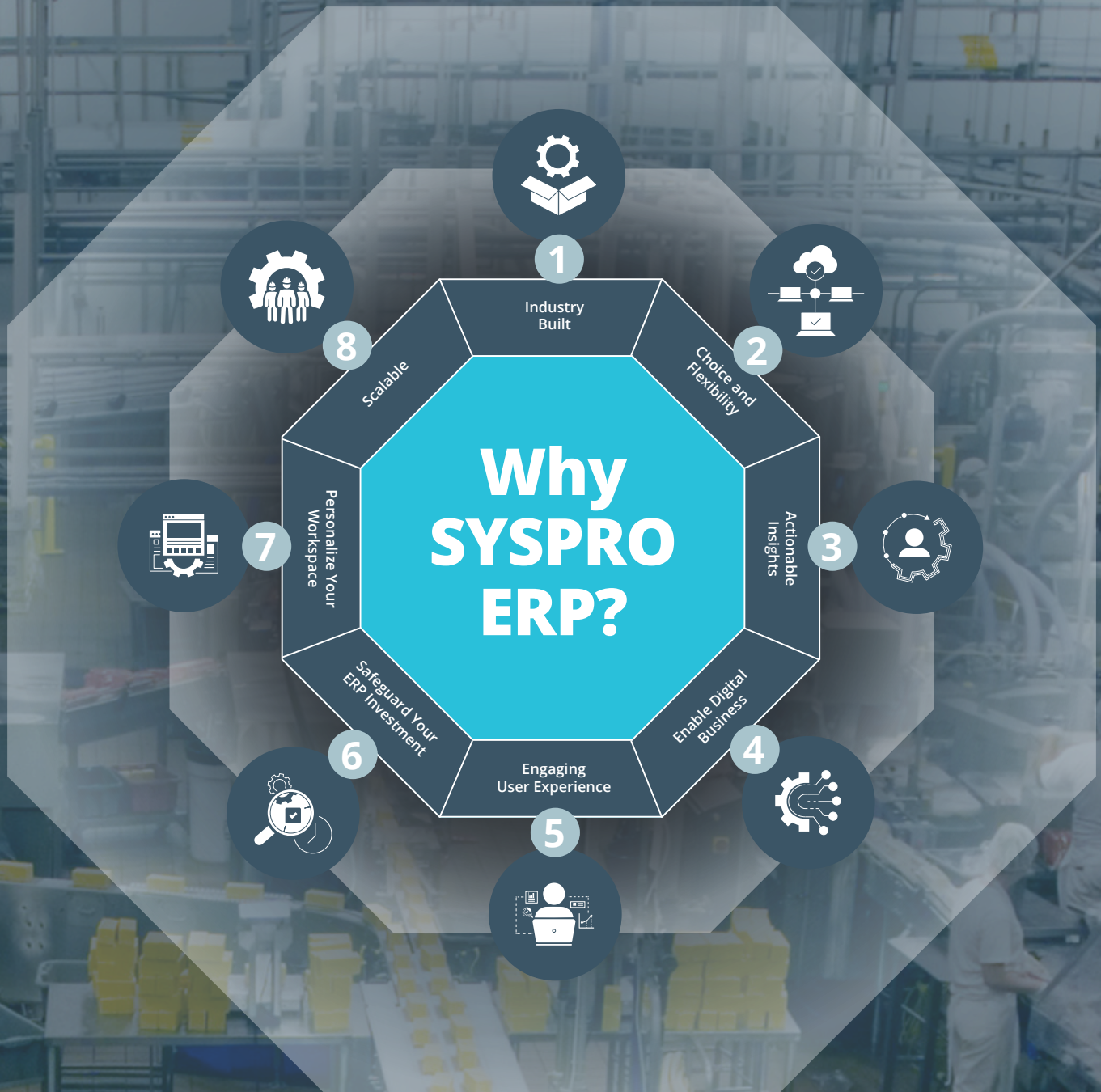
# 8 WAYS SYSPRO ERP SOFTWARE SIMPLIFIES YOUR SUCCESS

If you think of your manufacturing or distribution company as a living organism, Enterprise Resource Planning (ERP) is its central nervous system. As such, it perpetually collects, analyzes, and disseminates information about the health of different parts of the body so that it can be immediately acted upon to the benefit of the whole.

Because of SYSPRO's specialization in the manufacturing and distribution industries, with us, you get more than an ERP solution - you gain a global team of industry experts who speak your language, understand your business and know your pain points. What's more, as one of the longest-standing independent ERP providers in the world, our only vested interest is in you, our customers.

SYSPRO ERP is a continually evolving, industry-built, always on, web-based, Cloud-first ERP solution. With the integration of proven powerful new features, SYSPRO ERP is paving the way towards digitization. These features include actionable business insights; social media as a collaboration tool; exciting new IT capabilities and functions such as universal social media-type interfaces and platforms across all devices; and the flexibility to deploy on-premise, in the cloud, or both.

And rest assured, as new technologies emerge that redefine the way businesses work, SYSPRO will be at the forefront of helping you embrace and take full advantage of them.







# 1 INDUSTRY BUILT

SYSPRO's ERP solution is built to deliver industry-specific functionality for manufacturers and distributors. With 40 years' experience in both these sectors, SYSPRO is able to provide built-for-industry frameworks designed to help you benefit from best practices, especially in highly-regulated industries, while minimizing the cost, time, and disruption involved in ERP implementation.

## Customizable

Your business operations are unique, providing you with a competitive advantage. The last thing you need is a one-size-fits-all ERP solution to slow you down. We believe in providing a solution that allows people to configure the software to best suit their needs rather than one that governs how a business is run.

We focus on solving complex business challenges with a simple approach. For some of our customers, this has meant designing new functionality.

## Adaptable

To SYSPRO, change is normal, so we design to expect change.

As your business grows and your processes and practices change, so does your SYSPRO solution. Ever cognisant of change, our product development team is constantly building new functionality that evolves as your needs do.

**Primary benefit:** Optimized operations to ensure you stay current and in control with an ERP solution that best meets your unique needs.

**Primary function:** Customize your industry-built ERP to adapt, streamline, and simplify your operations and enable a competitive advantage through greater differentiation.





# Why SYSPRO ERP?

1  
Industry  
Built

2  
Choice and  
Flexibility

3  
Actionable  
Insights

4  
Enable Digital  
Business

5  
Engaging  
User Experience

6  
Safeguard Your  
ERP Investment

7  
Personalize Your  
Workspace

8  
Scalable



## 2 CHOICE AND FLEXIBILITY

Globalization is having a profound impact on manufacturers and distributors. It enables you to move your business into new markets and create flexible operational structures that foster growth, improve efficiencies, enhance employee productivity, and improve customer satisfaction.

### **SYSPRO Cloud ERP**

SYSPRO Cloud ERP safely takes care of all your core technology, storage, and networking capabilities. It provides a consistent user experience of SYSPRO for end users and system integrators alike, whether on-premises or in the cloud.

SYSPRO Cloud ERP gives you the choice and flexibility to access and deploy your ERP, your way, on your terms. Our Cloud-first, Always On strategy enables seamless delivery of any function, process, data, service or intelligence to the end-user's end-point of choice.

### **Work When and Where You Want**

We believe Enterprise Resource Planning should always be based on a foundation of being simple to use, intuitive, engaging, and always available- becoming an integral part of the day-to-day lives of our end users. SYSPRO's web interface, SYSPRO Avanti, meets all these criteria and more.

If you're in manufacturing or distribution, whether you're upsizing, setting up a new company locally or expanding your multinational organization to new territories, SYSPRO Avanti gives you quick and easy access to SYSPRO through a web browser, enabling your people to continue engaging – wherever they are, whatever device they're using, 24/7, with the same familiar SYSPRO ERP experience.

What's more, Avanti lets you choose and customize the interface that best suits your business situation, your role or the task at hand.

### **Mobile Capability on or off the Grid**

SYSPRO's mobile application, SYSPRO Espresso, is specifically designed and optimized for mobile devices and provides instant and secure access to information about your customers, suppliers, orders, inventory items, and other key business information even when working offline.



## Simplified Deployment

At SYSPRO we believe that everything we do must simplify the overall experience and enable our customers' success. In global partnership with Microsoft Azure, our SYSPRO cloud offering is simple to transition to, simple to configure and maintain, and simple to consume.

**Primary benefit:** Access and deploy your ERP, your way, on your terms.

**Primary function:** Choose the deployment that best suits your enterprise needs and budget, and choose the device that best meets the task at hand.





# 3 ACTIONABLE INSIGHTS

Today, business success is increasingly dependent on the immediate retrieval, access, and overall visibility of information. Organizations' business systems need to align with critical business drivers while simultaneously providing the vehicle to drive strategy throughout the enterprise. However, most ERP reporting and analytics tools only offer retrospective insights and don't provide users with the means and insights to immediately action KPIs and measures to improve business performance.

## Actionable Business Insights from SYSPRO

Business Insights from SYSPRO drives positive behavior in the workplace by empowering users with actionable **business-critical insights** for quicker analysis, decision-making and execution.

With relevant and real-time data trends and information, users are empowered to meet their goals, targets and deadlines with improved collaboration and the means to act quickly and proactively.

By incorporating SYSPRO Harmony - the social media-type interface - into Business Insights, users can access real-time information and share their opinions and decisions instantly - acting quickly to improve business performance. This brings together the collective intelligence of your workforce to solve business problems with a social ERP platform built to support collaboration.

## For Chief Financial Officers:

You don't need a CFO to tell you that financial performance is the most critical business driver of any organization. Without financial health, your company can't grow or succeed. Therefore, the better your real-time access and overall visibility into your company's finances, the better your company's chance of improved productivity, minimized risk and, ultimately, success.

The immense power of the data held within your ERP solution can be leveraged to drive business growth and increase agility. However, an over-reliance on spreadsheets for reporting, budgeting, planning, and forecasting makes it almost impossible to get accurate, actionable insights into financial performance. Using Corporate Performance Management tools, SYSPRO automates critical financial processes to gain increased visibility and insight into your business performance.



## For Operations Managers:

Business Insights offers greater control to operational stream managers as it gives them an immediate and complete view of each individual and department across the entire operation. This allows managers to define goals, targets, and deadlines at an individual, role or organizational level.

## For Individual Workstations:

For employees, relevant information is surfaced directly, creating comprehensive work-to-lists. By allowing individuals to manage their own work lists and measure and achieve their own KPIs, Business Insights transforms their work tasks into a seamless business process.

**Primary benefit:** Improved business performance through a productive workforce that is empowered with actionable insights to act quickly and proactively.

**Primary function:** Drive business behavior by empowering your users with business critical insights for quicker analysis, decision-making, and execution.





# 4 ENABLE DIGITAL BUSINESS

There's no doubt we're living in a brave new world. The boundary between digital and physical is continuing to blur, new technologies are disrupting the status quo and digitization is opening the door to infinite possibilities - with profound implications for the way companies will do business going forward.

## The Limitless Possibilities of SYSPRO ERP

With SYSPRO's focused approach to adopting the emerging technologies that are adding value, simplifying complexity and providing a competitive advantage, no-one is better equipped to take you on the journey towards digitization.

## Integration Services and APIs

Whether you are integrating with intelligent devices such as IoT, business partners across your supply chain or to other systems (on-premise or in the cloud), SYSPRO ERP provides well-defined integration services and APIs, thereby enabling flexible interactions and orchestrating data, messages and business moments.

## Leveraging SYSPRO's Algorithmic Business

By making use of machine learning and A.I. you will be able to make sense of structured and unstructured data, surfacing trends not previously identified and highlighting exceptions, anomalies, and emerging trends to enhance your decision-making.

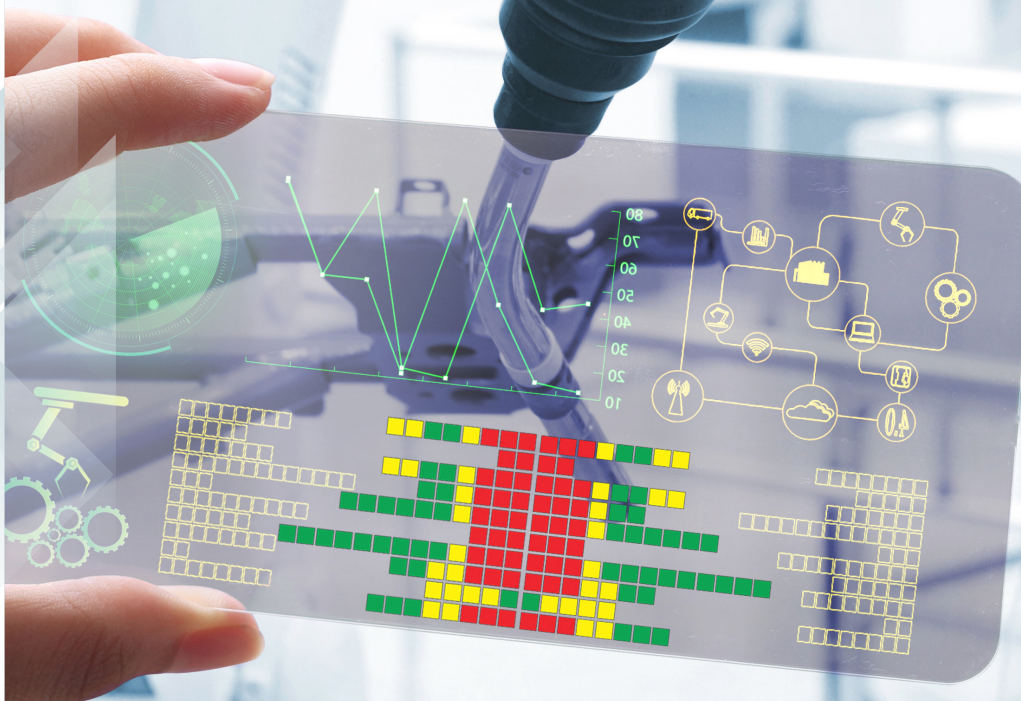
## Incorporating Digital Citizens

Artificial Intelligence introduces customers to intelligent and human-like chatbots which answer, and even predict, customer queries quickly. The (AI) web robot resides within the SYPRO ERP ecosystem and streamlines business functions through natural conversations with the bot. With these digital citizens taking over known or repetitive tasks, your people are freed up to do what they do best, improving efficiencies and adding new value to all stakeholders.

**Primary benefit:** Improved supply chain collaboration, greater operational efficiencies, and quicker decision-making.

**Primary function:** Digitize your business quickly and affordably, with minimum disruption.







# 5 ENGAGING USER EXPERIENCE

The use of smart phones in the workplace and the consumerization of IT devices have forever changed the users' expectations in interacting with technology. Ease of use and user experience are critical factors that can influence the successful adoption of an ERP system.

What would it mean for your business if you could empower users and improved collaboration as well as seamless connectivity across your entire organization?

SYSPRO's ERP solution has evolved to accommodate this by facilitating the creation of a productive and satisfying working environment. By moving from a system of record to a system of engagement, users confidently engage with SYSPRO through a familiar, intuitive, self-explanatory, easy-to-use platform that fosters collaboration and empowers them in their daily operations.





## Relevant for Each Business Role

The focus on user experience means making the software straightforward and easy to use as well as relevant to a user's specific role and business process. Role-based workbenches provide users with the complete tools and information needed to perform their roles efficiently and effectively, displaying aspects most relevant to a user's touch points with actionable insights only a click away.

## Universal Access

SYSPRO's web interface, SYSPRO Avanti, provides universal access to the same familiar SYSPRO experience in a web browser, allowing users to work where and when they want, on any device, on any platform, from anywhere, at any time.

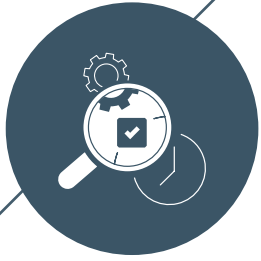
## Social ERP

SYSPRO Harmony, a collaborative, user-friendly social platform, brings social media into the core of ERP. It gives users a familiar interface to connect, communicate and conduct their daily business. By accessing and relating real-time information, insights and trends through Social ERP, users can act instantly and decisively– helping increase responsiveness, lead times and overall productivity.

**Primary benefit:** Increased productivity with an engaged and empowered workforce.

**Primary function:** Accelerate user uptake with a system that is engaging and easy to use.





# 6 SAFEGUARD YOUR ERP INVESTMENT

Imagine that your ERP solution could help you stay ahead of the competition today and ensure the viability of your business for all your tomorrows. When considering an ERP solution, you need assurances that the solution, and the company you're partnering with, has all the elements that will ensure your success well into the future. One that can easily adapt and scale as your business grows and your processes change. More importantly, a solution backed and supported by a team of best-practice industry experts who know your business as well as you do.

SYSPRO ERP fulfils all these criteria, and more.

## Maximize your ERP Investment

At SYSPRO, we work with our customers to maximize their investment in our software on an ongoing basis. Our products are continually being developed to optimize our customers' businesses by simplifying complex technologies, business processes, and external conditions. We are committed to making our ERP software future-proof so that you can leverage the relevant innovations to ensure the ongoing evolution of functionality and governance pertinent to your specific business operations.

## Focused and Built for Your Industry

SYSPRO has 40 years of industry-specific ERP software experience and expertise that you can use to your benefit. It is our focus on specific industries that speeds up implementation and ultimately results in a faster return on investment. Every day, we're developing and enhancing our software to anticipate and solve the challenges faced by business owners in the manufacturing and distribution sector.

## Single Solution, Multiple Benefits

SYSPRO ERP is organically built using a single source code, which provides a deeper level of functional integration and is simpler and less costly to maintain. This means you can have confidence in our unified, tightly knit, seamless platform.

## Enabled by Proven Technology

By selecting robust and proven technologies that are fully scalable, we can help you plan and implement the right technology in a predictable, strategic manner that avoids costly errors while you benefit from all the innovation that matters, and none that doesn't.

## Underpinned by Innovation

Whether by adopting emerging disruptive technologies that add new sets of values or by improving current operational capabilities, SYSPRO is always at the forefront of innovation.



## Drive for Excellence

Our development philosophy comprises root cause analysis, resulting in continuous improvement. In this way, we ensure alignment with the SYSPRO strategy to achieve excellence and consistent relevance for our clients.

## Specialist Ecosystem

With SYSPRO, you get more than a software solution, you on-board a global team of industry experts committed to simplifying your success, speaking your language and future-proofing your business.

## Implementation Services

Our implementation teams assist in reviewing and streamlining your business processes to provide a full understanding of your environment and to enable delivery of your ERP objectives. The IDEAL Implementation Methodology provides a methodical, transparent approach and you can trust our experts to assist you with optimizing and extending the software to deliver a competitive industry advantage on modern technology.

## Support Services

Ensuring that you have reliable ERP support when you need it is key to our support offering. We offer a number of services - ranging from self-help to remote and on-site support - helping you make the most of your SYSPRO investment. In addition, our Knowledge Base on the InfoZone Support Portal provides you with all the latest news and information.

## The SYSPRO Learning Channel

Because education plays a vital role in optimizing your SYSPRO experience and user capability, the SYSPRO Learning Channel offers comprehensive and wide-ranging courses that give you access to training material when you need it, where you need it. The certification programs and leader boards encourage and promote learning and enable a career path within the SYSPRO ecosystem.

**Primary benefit:** Continued value from your ERP solution, helping you stay ahead of the competition and ensuring the long-term viability of your business infrastructure.

**Primary function:** Leverage the right innovations to ensure the ongoing evolution of relevant functionality and governance pertinent to your specific business operations.





# 7 PERSONALIZE YOUR WORKSPACE

Imagine an ERP solution that allows all your users to simplify and customize their workspace to meet their individual needs. And that surfaces the information they require as and when they need it.

SYSPRO ERP offers all that, and more.

## Personalize and Design Your Workspace

SYSPRO ERP provides a personal touch by adapting to every user within your organization.

It allows users to simplify and customize their workstations to meet their individual roles and needs, surfacing the information they require as and when they need it - without requiring any form of software development.

The interface is designed to adapt and change as requirements evolve, giving users complete freedom to view required information within any SYSPRO application without the need for programming skills; all on a universal and familiar interface.

## Customizable to Your Role

Using Business Insights, you can ensure real-time visibility of each KPI or metric created for a role or a function. It also provides the information that is most pertinent to the user and places them at the centre of their engagement within the system.

## Establish Work-To-Lists

SYSPRO's ERP's work-to-lists gives users one view of everything they need to operate in their environment, taking in all touch points from information to deliver. This includes shortcuts, particular views, conversations from social ERP, following information from social ERP, and having all their KPI metrics to see how they are performing. In fact, it provides all the functions they need to perform in their roles.

**Primary benefit:** A simplified and personalized environment that is relevant to all users within your organization.

**Primary function:** Users can simplify and customize their own workspaces to suit individual roles and autonomous requirements, without needing to get development involved.





# Why SYSPRO ERP?





# 8 SCALABLE

Whether it's high-transaction volumes or transactional elasticity, the success of your manufacturing or distribution company depends on a robust ERP solution that provides the scalability to continually adapt to your needs, quickly, cost-effectively, and with minimum disruption to your workflow.

## The Incredible Scalability of SYSPRO

SYSPRO ERP provides the ability to scale to large deployments, handle high-volume single server instances, and accommodate multinational organizations with hundreds of subsidiaries.

With SYSPRO ERP, your business can smoothly expand from a handful of users to hundreds or even thousands, using the same core software.

## High-Performance Technology

SYSPRO uses proven technologies and platforms to deliver greater scalability, higher availability with less downtime for maintenance, and enterprise-strength data integrity - all while offering excellent performance. This means that your system can be easily enlarged as your company grows - with no effect on performance.

## Easy Implementation of New Functionality

The benefits of scalability include easier implementation of new functionality as your company's needs change. This includes the management of new processes or departments as they are added to your ERP ecosystem. The technology allows you to upgrade only when it makes sense, providing only the software you require, when it's required.

## Integration Capabilities

Your business can integrate other enterprise applications with SYSPRO for better operational control and management reporting. The software can extend beyond the enterprise to allow trusted customers and suppliers the ability to link with your systems for better order and delivery performance.

**Primary benefit:** System performance that matches your changing enterprise needs.

**Primary function:** Scale the solution to adapt to your current and future needs, and process more transactions faster, with enterprise strength and performance.





## Why SYSPRO ERP?

8

Scalable

1

Industry  
Built

2

Choice and  
Flexibility

3

Actionable  
Insights

4

Enable Digital  
Business

5

Engaging  
User Experience

6

Safeguard Your  
ERP Investment

7

Personalize Your  
Workspace

# SIMPLIFYING YOUR SUCCESS

The globalization of business and the emergence of the digital economy are shaping the future of the modern manufacturer and distributor. Old business models are being disrupted and new ones created by a user-driven ecosystem. As these trends shape and re-define the competitive landscape. SYSPRO's powerful capabilities, integrated with the latest technologies, will pave the way to digitizing your business, streamlining your supply chain, and providing greater control and visibility. All while simplifying and personalizing your user experience.



#### **USA and Americas**

SYSPRO USA and Americas  
959 South Coast Drive, Suite 100  
Costa Mesa, California, USA  
92626

Tel: +1 (714) 437 1000  
Toll free: +1 800 369 8649  
Email: [info@us.syspro.com](mailto:info@us.syspro.com)

#### **SYSPRO Africa**

Block A  
Sunninghill Place  
9 Simba Road  
Sunninghill  
Johannesburg, South Africa  
2191  
Tel: +27 (0) 11 461 1000  
Email: [info@za.syspro.com](mailto:info@za.syspro.com)

#### **SYSPRO Asia**

8 Eu Tong Sen Street  
#19-91 The Central  
Singapore  
059818  
Tel: +65 6256 1921  
E-mail: [info@sg.syspro.com](mailto:info@sg.syspro.com)

#### **SYSPRO Europe**

Baltimore House  
50 Kansas Avenue  
Salford Quays  
Manchester  
United Kingdom  
M50 2GL  
Tel: +44 161 876 4498  
Email: [info@eu.syspro.com](mailto:info@eu.syspro.com)

#### **SYSPRO Australia and Asia Pacific**

Suite 1102, Level 11  
201 Miller Street  
North Sydney  
NSW 2060  
Australia  
Tel: +61 (2) 9870 5555  
Toll free: +1 300 882 311  
Email: [info@au.syspro.com](mailto:info@au.syspro.com)

#### **SYSPRO Canada**

Vancouver  
4400 Dominion Street  
Suite 215  
Burnaby, Vancouver  
British Columbia, Canada  
V5G 4G3  
Tel: +1 (604) 451 8889  
Toll free: +1 888 259 6666  
Email: [info@ca.syspro.com](mailto:info@ca.syspro.com)

[www.syspro.com](http://www.syspro.com)