

FUJIFILM X-A2 Specifications

Model name	FUJIFILM X-A2	
Number of effective pixels	16.3 million pixels	
Image sensor	23.6mm×15.6mm (APS-C) CMOS with primary color filter Total number of pixels: 16.5 million pixels	
Sensor cleaning system	Ultra Sonic Vibration	
Storage media	SD memory card / SDHC memory card / SDXC (UHS-I) memory card *1	
File format	still image	JPEG (Exif Ver 2.3**2) / RAW (RAF format) / RAW+JPEG (Design rule for Camera File system compliant, DPOF-compatible)
	movie	Movie File Format: MOV, Movie Video Compression: H.264, Audio: Linear PCM Stereo
Number of recorded pixels	L : <3:2>4896×3264 <16:9>4896×2760 <1:1>3264×3264 M: <3:2>3456×2304 <16:9>3456×1944 <1:1>2304×2304 S : <3:2>2496×1664 <16:9>2496×1408 <1:1>1664×1664	
Lens mount	FUJIFILM X mount	
Sensitivity	AUTO / Equivalent to ISO200 - 6400 (Standard Output Sensitivity) Extended output sensitivity: equivalent to ISO100 / 12800 / 25600	
Exposure control	TTL 256-zone metering, Multi / Spot / Average	
Exposure mode	Programmed AE / Shutter priority AE / Aperture priority AE / Manual exposure	
Exposure compensation	-2.0EV - +2.0EV, 1/3EV steps	
Image Stabilizer	Supported with OIS type lens	
Face detection	Yes	
Shutter type	Focal Plane Shutter	
Shutter speed	(Advanced SR AUTO mode) 1/4 sec. to 1/4000 sec. (All other modes) 30 sec. to 1/4000 sec. Bulb (max. 60 min.) Synchronized Shutter speed for flash: 1/180 sec. or slower (At S or M mode, 1/160 sec. or slower can be set.)	
Continuous shooting	Approx. 5.6fps (JPEG : max. 30 frames, RAW/RAW+JPEG: max. 10 frames) Approx. 3.0fps (JPEG : max. 50 frames, RAW/RAW+JPEG: max. 10 frames) * SD Card CLASSIC or higher	
Auto bracketing	AE Bracketing (±1/3EV / ±2/3EV / ±1EV), Film Simulation Bracketing (3 types of Film Simulation selectable), Dynamic Range Bracketing (100%·200%·400%), ISO Sensitivity Bracketing (±1/3EV / ±2/3EV / ±1EV)	
Focus	mode	Manual Focus / Area AF / Multi AF / Continuous AF / Tracking AF
	type	TTL contrast AF, AF assist illuminator available
	AF frame selection	Area AF (49 areas with 7x7), Changeable AF frame size
White balance	Auto / Custom / Preset (Fine / Shade / Fluorescent light (Daylight) / Fluorescent light (Warm White) / Fluorescent light (Cool White) / Incandescent light	
Self-timer	10 sec. / 2 sec. Delay	
Flash	Manual pop-up flash (Super Intelligent Flash) Guide number: approx.7 (ISO200·m)	
Flash modes	Red-eye removal OFF: Auto / Forced Flash / Suppressed Flash / Slow Synchro / Rear-curtain Synchro / Commander Red-eye removal ON: Red-eye Reduction Auto / Red-eye Reduction & Forced Flash / Suppressed Flash / Red-eye Reduction & Slow Synchro / Red-eye Reduction & Rear-curtain Synchro / Commander *Red-eye removal is active when Face Detection is set to ON.	

Hot shoe	Yes (dedicated TTL Flash compatible)	
LCD monitor	3.0-in. aspect ratio 3:2 approx. 920K-dot Tilt-type TFT color LCD monitor (Approx. 100% coverage)	
Movie recording	Full HD 1920 x 1080 30p Continuous recording: up to approx.14 min. HD 1280 x 720 30p Continuous recording: up to approx.27 min. * SD Card CLASSIC or higher	
Mode dial	Advanced SR AUTO / P / S / A / M / C / Night / Sports / Landscape / Portrait Enhancer / SP / Adv.	
Film simulation mode	PROVIA (STANDARD) / Velvia (VIVID) / ASTIA (SOFT) / CLASSIC CHROME / MONOCHROME / SEPIA	
Dynamic range setting	AUTO / 100% / 200% / 400%	
Advanced filter	TOY CAMERA / MINIATURE / POP COLOR / HIGH-KEY / LOW-KEY / DYNAMIC TONE / SOFT FOCUS / PARTIAL COLOR (RED / ORANGE / YELLOW / GREEN / BLUE / PURPLE)	
Other photography functions	Eye Detection AF, Face Detection, Auto Red-eye Removal, Setting (Color, Sharpness, D-range, Gradation), Multiple exposure, Depth of Field display, Histogram display, Framing guideline, Frame No. memory, Monitor Sunlight mode, Focus Peak Highlight, Date stamp, Fn button setting, Multiple Exposure	
Wireless transmitter	standard	IEEE 802.11b / g / n (standard wireless protocol)
	access mode	Infrastructure
Playback functions	RAW conversion, Image rotate, Auto image rotate, Red-eye reduction, Photobook assist, Erase selected frames, Image search, Multi-frame playback (with micro thumbnail), Slide show, Mark for upload, Protect, Crop, Resize, Favorites, instax Printer Print	
Wireless function	Geotagging setup, Image transfer (Individual image / Selected multiple images), View & Obtain Images, PC Autosave	
Other functions	PictBridge, Exif Print, Language selection, Time difference, Quick start mode, Silent mode	
Terminal	Digital interface	USB 2.0 High-Speed
	HD output	HDMI mini connector (Type C)
	Others	Remote release terminal for RR-90 (sold separately)
Power supply	NP-W126 Li-ion battery (included)	
Dimensions	116.9mm (W) x 66.5mm (H) x 40.4mm (D) / 4.6in. (W) x 2.6in. (H) x 1.6in. (D) (Minimum depth: 32.1mm / 1.3in.)	
Weight	Approx. 350g / 12.3 oz. (including battery and memory card) / Approx. 300g / 10.6 oz. (excluding accessories, battery and memory card)	
Operating temperature	0°-40°C / 32°-104°F	
Operating humidity	10 - 80% (no condensation)	
Battery life for still images*3	Approx. 410 frames (with XF35mmF1.4 R lens)	
Starting up period	Approx. 0.5 sec. (When QUICK START mode set to ON), Approx. 1.0 sec. (When QUICK START mode set to OFF)	
Accessories included	Li-ion Battery NP-W126, Battery Charger BC-W126, Shoulder strap, Body cap, CD-ROM (Viewer software, RAW File Converter, etc.**4) , Owner's manual	

*1 Please see the Fujifilm website to check memory card compatibility.

*2 Exif 2.3 is a digital camera file format that contains a variety of shooting information for optimal printing.

*3 Approximate number of frames that can be taken with a fully-charged battery based on CIPA standard

*4 OS compatibility Viewer software : Windows 8.1 / 8 / 7 / Vista RAW File Converter : Windows 8.1 / 8 / 7 / Vista, Mac OS X 10.6.8-10.10

For more information, please visit our website:

<http://fujifilm-x.com/x-a2/>

© To ensure correct usage, read owner's manual carefully before using your equipment.
All photos, illustrations, drawings and other images in this brochure are intended for illustrative purposes only.
Microsoft, Windows and Windows logo are trademarks,
or registered trademarks of Microsoft Corporation in the United States and/or other countries.
Macintosh and Mac OS are trademarks of Apple Computer, Inc., registered in the U.S. and other countries.
SDXC logo is a trademark. All other trademarks are the property of their respective holders.
SILKYPIX® is a registered trademark of Ichikawa Soft Laboratory Co., Ltd. in Japan.

FUJIFILM
FUJIFILM Corporation



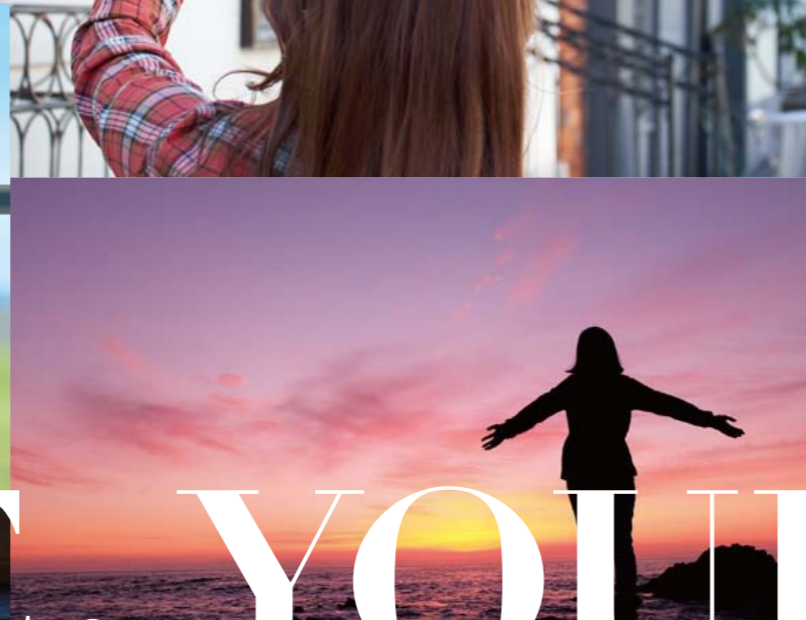
Specifications are subject to change without notice.

©2015 FUJIFILM Corporation

FUJIFILM
Value from Innovation



X-A2



A high-performance compact system camera,
the Fujifilm X-A2 will let you
capture pictures in your own style

"What a great shot."

The X-A2 allows you to capture important moments
perfectly with the superb image quality Fujifilm's X Series is famous for.
Self-portraits, landscapes, macro shots, low-light or flash photography.

The X-A2 will provide you with all the creative settings you need to
develop your own creative style. It truly is a camera you will grow into.

X-A2

YOUR LIFE, YOUR STORY



MACRO



15cm

From CMOS Sensor

SELFIE

Selfie = taking a beautiful self-portrait

175-degree tilting LCD screen for better selfies

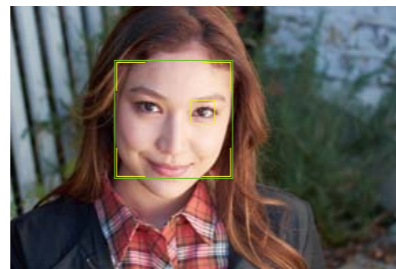
The X-A2 is the first X Series model to feature an LCD screen that flips up 175 degrees making it easier to take a selfie. The wide-angle end of the new XC16-50mm kit lens, equivalent to a 24mm* lens, allows you to also include your surroundings.



*Equivalent to 35mm format

Eye detection AF automatically focuses on the eyes, transforming ordinary selfies into great self-portraits

The Eye detection AF function is automatically activated when you rotate the tilting LCD panel. It helps to achieve superior selfies by focusing on the eyes. Choose from Auto, Left Eye Priority and Right Eye Priority*.



*Will be fixed to "Auto" when the LCD is flipped up for selfies.

Portrait Enhancer mode makes skin look brighter and smoother

Select Portrait Enhancer on the mode dial to lighten skin tones for a clear, smooth look. Taking great selfies with a beautiful skin complexion has never been easier.



Focus down to 15cm with Auto Macro

Auto Macro function captures objects just 15cm from the sensor (Approx. 7cm from lens surface)

The wide-angle end of the new XC16-50mm II kit lens provides a minimum working distance of 15cm from the sensor. The Auto Macro function automatically switches the camera to the Macro mode for quick focusing.



Faster AF speeds for close-up shots and low-contrast conditions

Intelligent AF, with its improved algorithm, delivers fast focusing even in situations that typically slow AF down, such as macro shots and in low-contrast conditions.





Effortlessly delivers X Series color and image quality

Featuring the latest "CLASSIC CHROME" Film Simulation mode

The Film Simulation function allows you to enjoy advanced color reproduction and tones, just as if choosing a film. The new "CLASSIC CHROME" mode, characterized by deep colors and rich tones, is included to broaden your options.



PROVIA/STANDARD

Velvia/VIVID



ASTIA/SOFT

B&W

SEPIA

Large APS-C sensor and fast image processor delivers premium image quality

The 16-megapixel APS-C sensor produces superb resolution and bokeh, while the EXR Processor II ensures fast response times.

EXR Processor II	Shutter time lag 0.05 sec.
Shooting interval 0.4 sec.*1	Start-up time 0.5 sec.*2

*1 When the Live View is turned off
*2 When the Quick Start mode is turned on

High ISO performance delivers stunning nightscapes when shooting hand-held

The combination of both a sensor and processor with strong ISO performance effectively reduces noise, even in low-light conditions. You can feel confident increasing the ISO setting for hand-held shots.



Wide range of functions delivers simple operation and picture-taking power

One-handed operation with a dedicated button for the frequently used self-timer function

Buttons and dials are positioned on the right-hand side for a stable grip and easy one-handed operation.



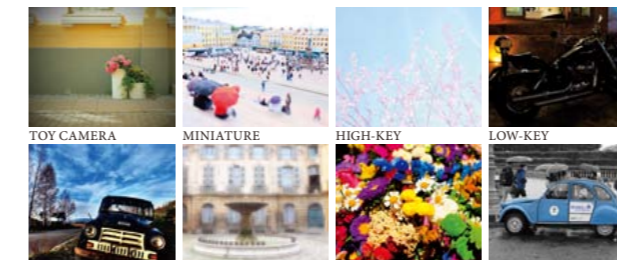
The Q Button is in an easy-access location for quickly recalling 16 settings.

Long-life battery for up to 410 photos

Longest battery life in its class is achieved due to a power-saving design.

Eight Advanced Filters offer artistic and unique effects

Eight types of filter effects are featured, including "TOY CAMERA" for a retro look and "POP COLOR" for boosting color saturation.



TOY CAMERA

MINIATURE

HIGH-KEY

LOW-KEY

DYNAMIC TONE

SOFT FOCUS

POP COLOR

PARTIAL COLOR (RED/ORANGE/YELLOW/GREEN/BLUE/PURPLE)

Multi-Target "MULTI AF" to capture your subject every time

The camera uses multiple focusing points to identify the intended subject, automatically selecting the subject you want to shoot.



Wireless Image Transfer and Instax Share SP-1 printing

Images can be transferred easily to smartphones and tablets on the spot.



Super Intelligent Flash provides natural lighting even on close-up subjects

Flash output is automatically adjusted for each scene, providing light in backlit or low-light conditions, and preventing highlight or shadow clipping in macro photography.



Accessories for the X-A2 to increase the fun of taking the camera wherever you go



Leather Case (with shoulder strap)
Black BLC-XM1

Leather Case (with shoulder strap)
Brown BLC-XM1 BW



Macro Extension Tube
MCEX-11

Macro Extension Tube
MCEX-16

Hand Grip
HG-XM1

Shoe Mount Flash EF-X20
Shoe Mount Flash EF-20
Shoe Mount Flash EF-42
Remote Release RR-90
M Mount Adapter MM ADAPTER

Grip Belt GB-001
Body Cap BCP-001
Lens Rear Cap RLC-001
Lens Cap FLCP-58 φ58
Protect Filter PRF-58 φ58

Li-ion Battery NP-W126
Battery Charger BC-W126
AC Power Adapter AC-9V
DC Coupler CP-W126

New kit lenses with an enhanced finish and improved macro and image stabilization functions

XC16-50mm F3.5-5.6 OIS II

A standard zoom lens with a focal range equivalent to 24-76mm in the 35mm format. Compact and lightweight, it weighs just 195g and features 3 stops of image stabilization. The minimum working distance on the wide-angle end is now 15cm, and the lens barrel finish has been improved.



XC50-230mm F4.5-6.7 OIS II

A telephoto zoom lens with a focal range equivalent to 76-350mm in the 35mm format. Weighing 375g, this lens also offers 3 to 3.5 stops of image stabilization. Like the 16-50mm, the barrel is textured to reduce its shine and add elegance to the silver look.



All XF / XC lenses, which boast high descriptive performance, can be used with the X-A2.

>> <http://fujifilm-x.com/xf-lens/>