

MAX

ADVANCED SHIPPING AND E-COMMERCE INTEGRATION



Login to the 21st Century and join the e-Commerce Revolution with MAX Advanced Shipping. The MAX Advanced Shipping solution helps you streamline the process associated with allocating, picking, and shipping orders. Finished good inventory can be allocated to sales orders based upon priorities you control.

Create and maintain Bills of Lading from one multi-tabbed dialogue

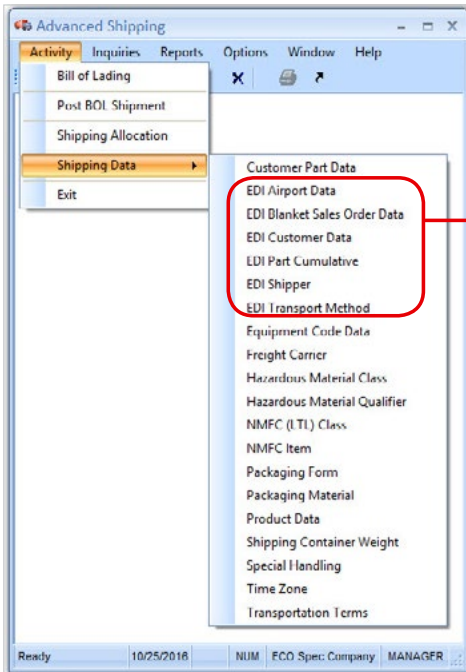
MAX Advanced Shipping Highlights

- Available inventory can be allocated to specific line/delivery items.
- View and assign sales order line items to a Bill of Lading.
- Add all needed specialized information to the Bill of Lading and print it.
- Shipping Availability and Allocation Inquiry allow the user to reallocate priorities.

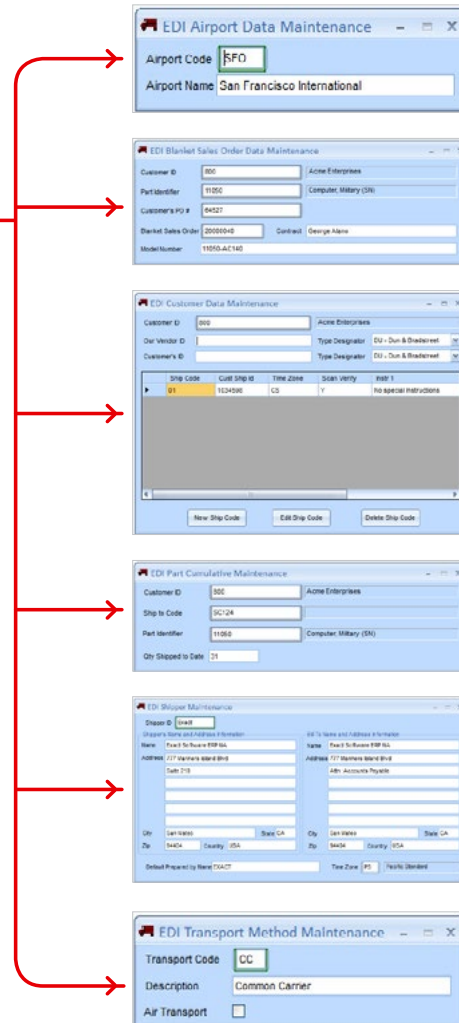
- Create Bills of Lading by grouping and palletizing sales orders.
- Keep a detailed history of all shipping records.
- Query Bills of Lading by tracking number, shipper, or customer ID.
- Automatically calculate total weights and counts for all line items included on a Bill of Lading.
- Complete support for parts under lot and/or serial control.

With MAX Advanced Shipping, you can...

- Review planned shipments and inventory allocation and make changes before recording the shipments
- Review the dollar impact of inventory allocation choices before finalizing shipments
- Process all shipments in one transaction, saving the usual line item by line item shipping process
- Benefit from automated shipping that is quick, accurate, and based upon priorities you control
- Print Pick Lists and Bill of Lading forms to augment the shipping process
- Automatically allocate finished good inventory based on your priorities



Prepare and manage all of your e-Commerce Integration data completely and easily with the ability to launch the different ECI components from a single sub-menu within Advanced Shipping



EDI isn't like email...it's better!

Although both e-mail and fax are electronically transmitted, both are free form. This means that email and fax transaction transmissions must be interpreted and re-keyed before they can be processed by a computer. However, EDI organizes data into a structured format, which can be readily interpreted and processed by a computer running applications that understand the format standard, thus allowing your business to achieve e-Commerce Integration.

Supported e-Commerce Transactions

- I Inbound
 - I Sales Order
 - I Forecast
 - I Shipment Schedule
- I Outbound
 - I Advance Shipment Notification
 - I Invoice
 - I Paging Notification

Now there is an easier, more efficient way to manage your shipping procedures. Enhance your MAX System with MAX Advanced Shipping and ECI. Please contact your Account Manager for details.

With e-Commerce Integration, you can...

- Improve customer service
- Streamline customer and vendor activity through the supply chain
- Reduce the cost and improve the efficiency of your business transaction processes

The **MAX e-Commerce Integration (ECI)** is an e-commerce transaction-processing solution designed to implement with a new or existing MAX installation and is currently offered as an enhancement to the MAX Advanced Shipping module. MAX ECI provides inbound and outbound transaction processing to and from the MAX system and uses customer and shipment information in your existing MAX database to transact B2B e-commerce with your suppliers and customers.

How does it work?

MAX ECI uses Electronic Data Interchange (EDI)—the computer-to-computer exchange of business-to-business (B2B) transactions in a standardized, electronic format—to establish business transaction communication between companies from one computer application to another. Early attempts to establish “electronic communications” employed proprietary or unique formats. This absence of a standard format led to a condition where industry computers could exchange data without constant and unique customization of applications. For example, Supplier A could recognize Manufacturer B’s Purchase Order, but could not readily understand a Purchase Order from Manufacturer C. Thus enters EDI.