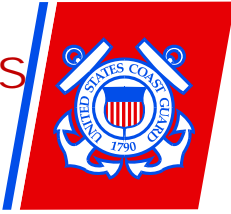


UNITED STATES
COAST GUARD



Security Zones for Freeport.

THE CAPTAIN OF THE PORT HOUSTON
- GALVESTON HAS ESTABLISHED
SECURITY ZONES FOR CERTAIN
AREAS WITHIN THE FREEPORT AREA.

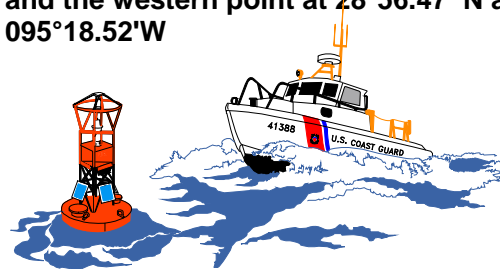
RECREATIONAL VESSELS AND OTHER
UNAUTHORIZED VESSELS/PERSONS
ARE EXCLUDED FROM THESE AREAS
WITHOUT EXPRESS PERMISSION
FROM THE CAPTAIN OF THE PORT.

VIOLATORS MAY BE SUBJECT TO
CIVIL PENALTIES, FINES, AND/OR
IMPRISONMENT. SEE BELOW FOR A
FURTHER EXPLANATION OF THESE
AREAS.

! WARNING !

*The following areas
are off limits*

Freeport: The Dow Barge Canal, containing all waters of the Dow Barge Canal north of a line drawn between 28°56.81' N/ 095° 18.33' W and 28°56.63' N/095°18.54' W (NAD 1983). The Brazos Harbor, containing all waters west of a line drawn between 28°56.45' N, 095°20.00' W, and 28°56.15' N, 095° 20.00' W (NAD 1983) at its junction with the Old Brazos River. The Dow Chemical plant, containing all waters of the Brazos Point Turning Basin within 100' of the north shore and bounded on the east by the longitude line drawn through 28°56.58' N/095°18.64' W and on the west by the longitude line drawn through 28°56.64' N/095° 19.13' W (NAD 1983). The Seaway Teppco Facility, containing all waters of the Brazos Port Turning Basin bounded on the south by the shore, the north by the Federal Channel, on the east by the longitude line running through 28°56.44' N, 095°18.83' W and 28° 56.48' N 095°18.83' W and on the West by the longitude line running through 28°56.12' N, 095°19.27' W and 28°56.11' N, 095°19.34' W (NAD 1983). The Conoco Phillips Facility docks, containing all waters within 100' of a line drawn from a point on shore at Latitude 28°55.96' N, Longitude 095°19.77' W, extending west to a point on shore at Latitude 28°56.19' N, Longitude 095°20.07' W (NAD 1983). The Freeport LNG Basin containing all waters, from surface to sea floor, by a line drawn between the eastern point at latitude 28°56.42'N longitude 095°18.22'W and the western point at 28°56.47' N and 095°18.52'W



Freeport Moving Security Zones: The Captain of the Port may impose a Moving Security Zone around any vessel entering the Freeport Harbor. Entry is prohibited within 1000 yards ahead or astern, or 500 yards on each side of a vessel that has a moving security zone placed around it. A moving security zone begins at U.S. territorial waters and moves with the vessel throughout the entire transit into the Port of Freeport. Mariners should monitor channel 16 VHF/FM for broadcasts when these security zones are in effect. Entry into or remaining in the zones described in this section is prohibited unless authorized as follows: Moored vessels or vessels anchored in a designated anchorage area are permitted to remain moored or anchored if they come within a security zone described in this section; A moored or an anchored vessel in a security zone must remain moored or anchored unless it obtains permission from the Captain of the Port to do otherwise; Commercial vessels operating at the waterfront facilities within these zones; Commercial vessels transiting directly to or from waterfront facilities within these zones; Vessels providing direct operational/logistic support to commercial vessels within these zones; Vessels operated by the port authority or by facilities located within these zones; Vessels operated by Federal, State, county, or municipal agencies. All persons and vessels within the moving security zone must comply with the instructions of the Captain of the Port Houston-Galveston and designated on-scene U.S. Coast Guard patrol personnel. On-scene U.S. Coast Guard patrol personnel include commissioned, warrant, and petty officers of the U.S. Coast Guard.

All Cruise Ships: Vessels may enter within 500 yards of a cruise ship but not closer than 100 yards provided they operate at the minimum speed necessary to maintain a safe course. No person or vessel may enter within 100 yards of a cruise ship unless specifically authorized by the Captain of the Port.



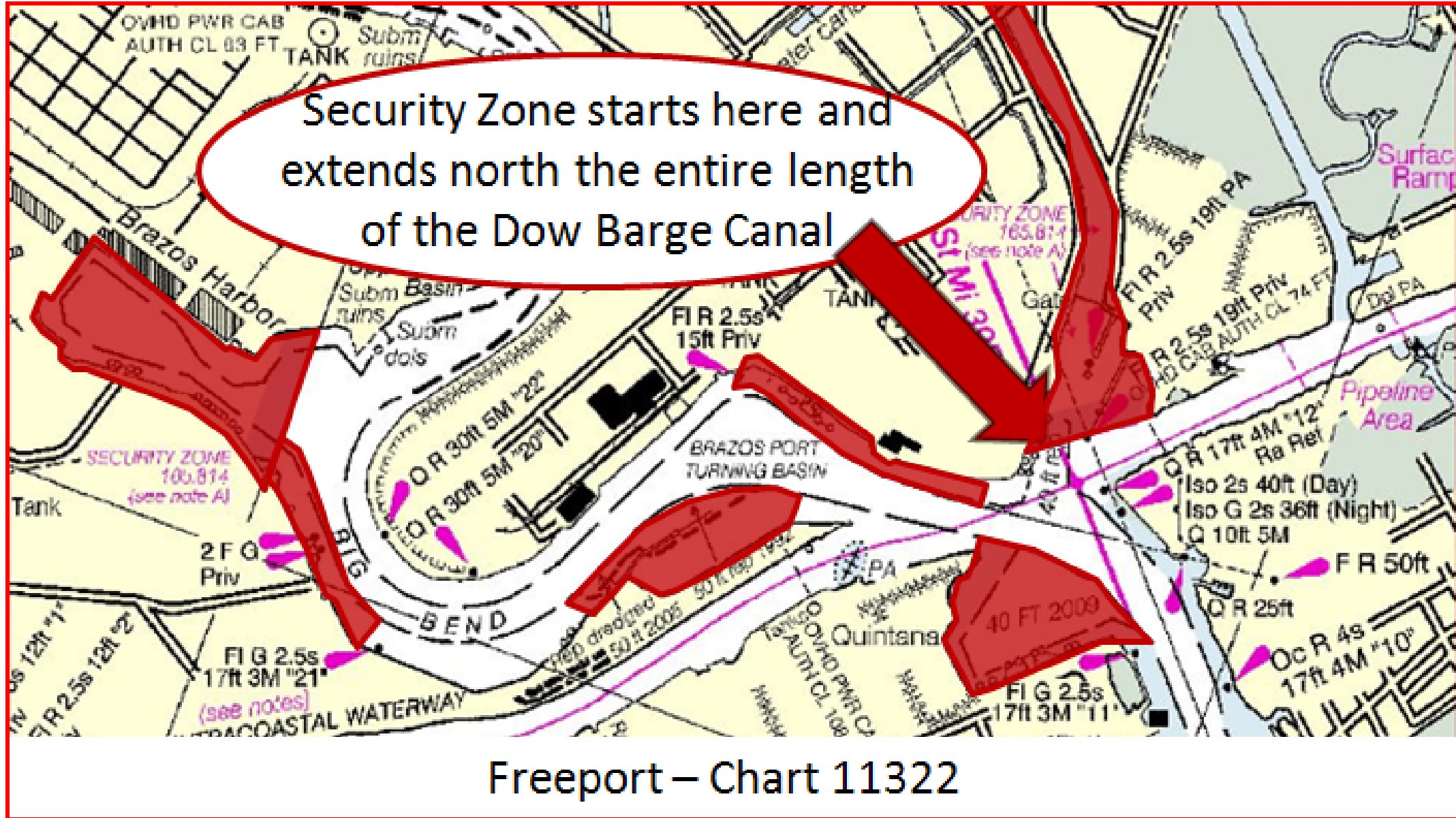
**For information on how
to obtain authorization
to transit a security
zone contact Sector
Houston- Galveston
Command Center at
(713)671-5113.**

US Coast Guard Sector Houston-
Galveston
9640 Clinton Dr.
Houston, TX 77029
Emergency Phone: 713.671.5113
Quick Link
<http://homeport.uscg.mil/houstongalveston>



Security Zones for Freeport

These areas are off limits



Warning!

These areas are off limits

US Coast Guard Sector Houston-Galveston
9640 Clinton Dr.
Houston, TX 77029
Emergency Phone: 713.671.5113
Quick Link <http://homeport.uscg.mil/houstongalveston>