



IPENDO®

CLOUD-BASED IP MANAGEMENT SOFTWARE
FOR ENHANCED BUSINESS COLLABORATION

IPENDO®

IN TODAY'S COMPETITIVE IP ENVIRONMENT ORGANISATIONS NEED SIMPLE BUT POWERFUL TOOLS TO MAXIMISE THE VALUE OF THEIR IP PORTFOLIOS.

Ipendo is an advanced IP management solution enabling organisations, large or small, to seamlessly collaborate with their internal and external stakeholders. The newly enhanced software allows IP departments to securely connect all aspects of IP activity, access custom dashboards and share information more efficiently to meet business objectives with increased efficiency.

FEATURES & BENEFITS

- Enhance collaboration across multiple stakeholders and jurisdictions with access to all IP information in one place
- Make better informed decisions with dynamic business intelligence dashboards
- Maximise ROI with reduced costs and lower administration requirements
- Support and drive your IP workflows with the Ipendo 'Workflow Engine'
- Align your IP portfolio to your business strategy, with increased visibility and intelligent analytics
- Powerful security functionality gives peace of mind that IP information is safe



With Ipendo, we have a comprehensive IP management system and not just another database. Our ability to securely connect, communicate and collaborate on IP matters has significantly improved.

KRISTER KARLSSON,
Corporate Patent Attorney, Neste Oil

WHAT CAN IPENDO DO FOR YOUR IP DEPARTMENT?

Designed and built by leading IT and IP experts, Ipendo has all the key elements needed for a highly functioning IP portfolio management solution, including:

DASHBOARDS AND REPORTING

Turn your IP portfolio data into actionable insights. Ipendo's newly launched business intelligence dashboards and data visualisations bring your data to life and make decision making faster and more efficient. On-demand and reliable IP information is available through easy-to-consume dashboards, charts and graphs. The dashboard report builder is a modern, easy-to-use, and configurable tool to capture and understand your key metrics.

Easily and quickly visualise your IP data as charts and graphs, and save and share with colleagues. No need to spend time extracting data manually and building pivot tables.

Build a wide variety of powerful business intelligence reports, including executive level reports and trend reports using a range of custom and ready-to-use categories.

Build portfolio trend reports, renewal projection reports, data validation reports and much more. Easily share your reports with the right stakeholders.

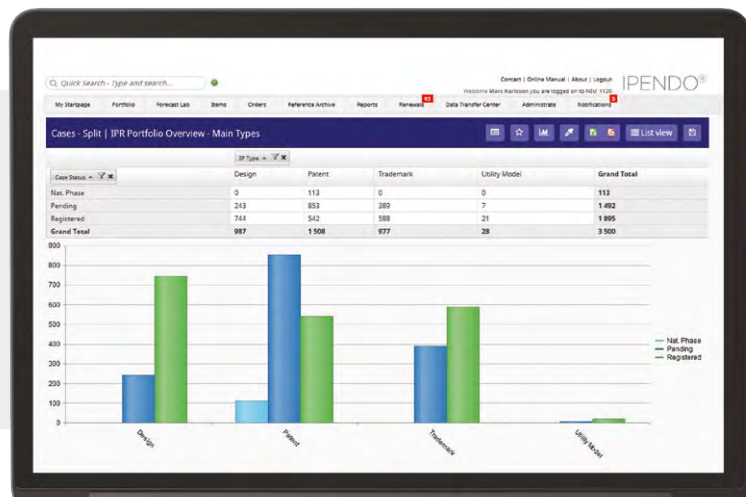
EXCEPTIONAL BUSINESS CONNECTIVITY

Providing 24/7 access with real-time availability, Ipendo is an advanced collaboration environment for increased coordination of activities across multiple stakeholders and locations.

With all IP portfolio data hosted in one place, stakeholders can easily share information and are working with the most accurate information available increasing data accuracy and reducing administrative overheads.

Users can conduct advanced searches, invite licencing partners or business users, create invention management workflows and benefit from increased IP coordination.

Business intelligence dashboard showing Cases breakdown



REDUCE COST AND ADMINISTRATIVE BURDEN

Using a cloud-based model, Ipendo allows organisations to significantly lower overheads by reducing IT expenditure, making operational efficiencies and reducing annual maintenance fees. Regular software updates provide users with access to the latest functionality whilst avoiding costly and time consuming IT administration.

HIGHLY CONFIGURABLE WORKFLOWS

Easy-to-use workflow functionality simplifies and streamlines your departmental processes. Easily create bespoke workflows to suite your needs with the 'Workflow Engine' tool. With intuitive basic configuration, no complex software training is required meaning your team can be fully functional immediately. Migration is simple with standardised set-up available, resulting in a smooth transition from previous solutions.

ENHANCE SECURITY AND CONTROL ACCESS

Storing and sharing all IP documents within Ipendo ensures your data is secure and provides a full audit trail by user and location. Powerful security tools allow you to add multiple levels of security required by many IT departments. Ipendo supports adding two factor authentication using a "One Time Password" function. Limit access to within a corporate firewall using the easily configured "IP Range" tool. Hierarchal access levels ensure the right people are granted access to the appropriate information only. Regular automatic backups and full data recovery also ensure your data is fully secure.

LET'S GET STARTED

Email ipinfo@cpaglobal.com to start the conversation or visit us online at cpaglobal.com to learn more.

ADVANCED INTEGRATIONS

CPA Global Renewals Service

CPA Global renewals services and data verification capabilities are seamlessly integrated in Ipendo, which provides automatic data transfer to the renewals systems including instructions and cost information.

Forecast App

Accurately track and predict the costs of prosecutions, filings, renewals and fees across your entire patent, trademark and design portfolio with Forecast. Forecast is an advanced and easy-to-use IP financial modelling tool that integrated seamlessly with Ipendo.

By connecting Ipendo to CPA Global's renewals and forecasting capabilities, portfolio owners and managers can achieve greater efficiency and budget control, all in a safe and secure environment.