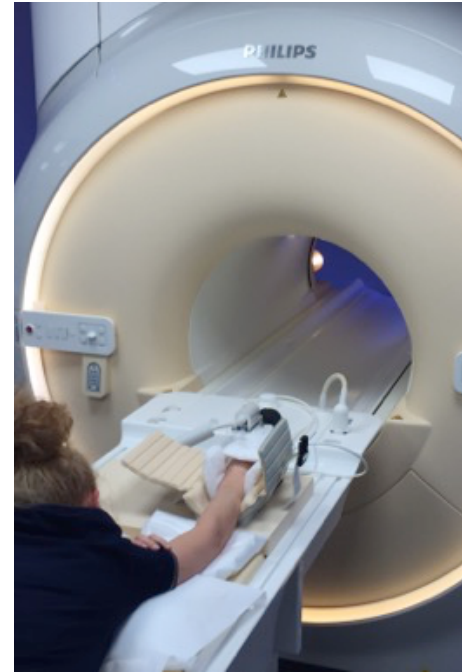




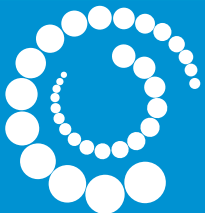
Patient positioning in prone position

Application inspirations and tips



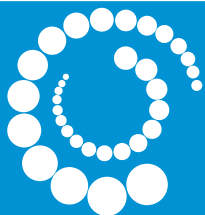


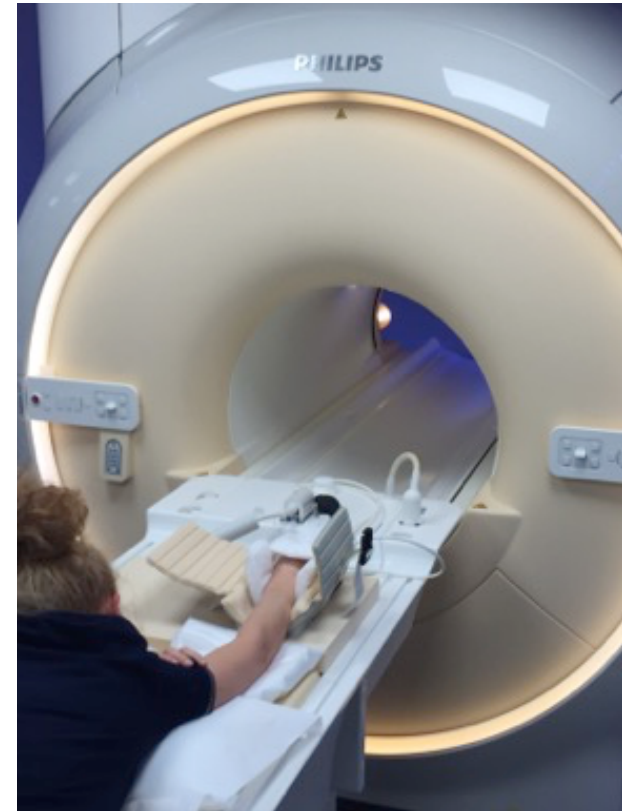
Stable and comfortable positioning in prone position –
the supreme discipline of patient positioning



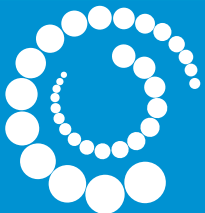


Application tip for the prone position in general: 1) Put positioning aid under feet to reduce pressure on knees. 2) Position the head comfortably (patients preferred position, arms, specific aids). 3) Support patient position evenly over a wide surface to avoid pressure points.



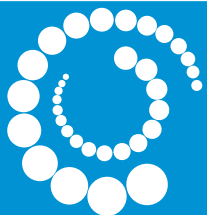


Application tip Superman position: 1) Support the shoulder over a large area and avoid hard edges. 2) Bring head in a comfortable position with patients' preferred position. 3) Avoid direct contact of elbow with patient table/mat.



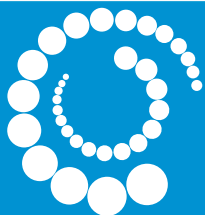


Application tip breast MRI: 1) Offer additional support of pressure sensitive areas, like sternum/ribcage. 2) Ensure relief of the upper body by adequate positioning of the arms, hips and legs.



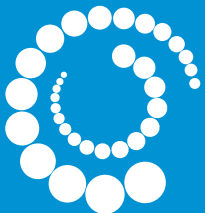


Application tip for spinal infiltration: 1) Put positioning aid under feet to reduce pressure on knees and avoid hard edges. 2) Ensure comfortable head position using adequate tools and positioning aids. 3) Support patient position evenly over a wide surface to avoid pressure points and secure a stable position.



About Pearl Technology AG

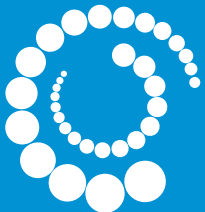
- Swiss-based company specializing in patient positioning solutions for radiology, nuclear medicine and radiotherapy
- Develops, produces and sells standard positioning aids in radiology through a global network of distribution partners
- Develops and manufactures customized solutions together with OEMs
 - e.g. CIVCO respiratory pad with private label
 - e.g. OptiX positioning aids for GE Optima 430s
- Swiss Made according to ISO:13485 standards: Reliable workmanship of high-quality, durable materials



The PearlFit-Effect

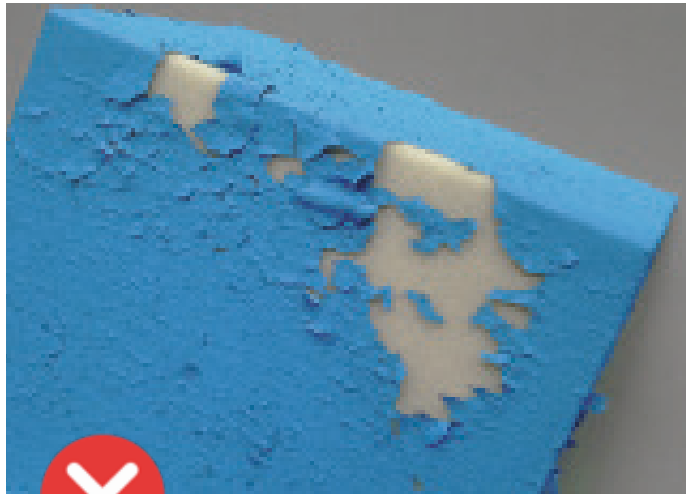


- PearlFit positioning aids allow a stable but yet pressure free positioning of patients
- The effect is commonly known from beanbags – the weight of the (part of the) body suppresses the pearls and makes them interlock into each other
- It is similar to vacuum cushions without the need to draw air out (less stable, but also less hard)
- It can be compared to a footprint in the sand

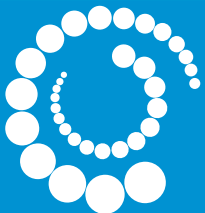


PearlFit – Universal positioning aids

Durable and perfectly hygienic



Polyurethane foil and weld seams are durable and have a permanently resistant surface even when wiped with 90% alcohol.



PearlFit Advantages



High durability,
long lifetime with tear-
resistant materials



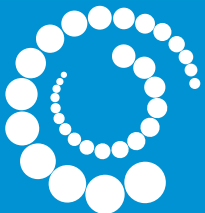
Stable positioning without
pressure points
(beanbag concept)



Perfectly hygienic;
Durable surface allows
easy cleaning without
residue using 70%
alcohol



Versatile fields of
application (CT, MRI, X-Ray,
etc.);
Radiolucent from 70-140 kV



Pearl Technology AG
Wiesenstrasse 33
8952 Schlieren/Zürich

info@pearl-technology.ch
T: +41 43 535 08 40

