



## Compressed air tools

Oil mist should be continuously added to the compressed air flowing through all pneumatic tools which are not explicitly labelled as suitable for oil-free operation. We therefore recommend using the corresponding conditioning unit, consisting of a filter pressure regulator and mist lubricator.

## pneumatic drills

## Application:

**Ident. No. 010:** For working on locks, weirs and canals

**Ident. No. 211:** Ideal for bodywork and industry

## Execution:

▪ **Ident. No. 010:** Ergonomic, fibreglass-reinforced polyamide housing

▪ **Ident. No. 211:**

- Exhaust air routed through handle
- Handle insulated against cold
- With quick-action drill chuck

## Advantage:

▪ **Ident. No. 211:** Suitable for continuous operation

## Delivery:

**Ident. No. 010:** Toothed ring drill chuck, hose stem, in a box

**Ident. No. 211:** incl. coupling connector: Nominal width 7.2

## Notes:

**Ident. No. 010:** for compatible conditioning unit, see no. 75424

**Ident. No. 211:** For compatible conditioning unit, see no. 75424



Ident. No. 211

Ident. No. 010  
Ref. Similar to 015

Model			-	9030N-1
BOSCH no.			0 607 160 501	-
Max. drilling Ø in steel (mm)			6	-
Max. idle speed (U/min(rpm))			2800	2000
Power output (W)			320	375
Air consumption (l/min)			510	113
Connection thread			NPT 1/4 inch	G 1/4 inch
Min./max. drill chuck span width			1-10 mm	1-10 mm
Inner hose Ø (mm)			10	10
Weight (kg)			0.62	1
With right/left-hand rotation			No	Yes
Direction of rotation			Clockwise rotation	-
<b>BOSCH</b> 75032...	Ident. No.		010	-
<b>HAZET</b> 75032...	Ident. No.		-	211

BOSCH = Prod. Gr. 728  
HAZET = Prod. Gr. 738

## Pneumatic angle drills

## Application:

**Ident. No. 110:** For drilling boreholes in poorly accessible places.

**Ident. No. 221:** For drilling boreholes in hard-to-reach places.

## Execution:

▪ **Ident. No. 110:**

- With clockwise and anti-clockwise rotation
- With sensitive valve control

▪ **Ident. No. 221:**

- Exhaust air routed through handle
- Handle insulated against cold
- With quick-action drill chuck

## Delivery:

**Ident. No. 110:** In box

**Ident. No. 221:** incl. coupling connector: Nominal width 7.2

## Notes:

**Ident. No. 110:** for compatible conditioning unit, see no. 75424

**Ident. No. 221:** For compatible conditioning unit, see no. 75424

## Technical data:

- Connection thread: G 1/4 inch
- Min./max. drill chuck span width: 1-10 mm
- Inner hose diameter: 10 mm



Ident. No. 110



Ident. No. 221

Model			CP879	9030N-5
Max. drilling Ø in steel (mm)			10	-
Max. idle speed (U/min(rpm))			1800	1400
Power output (W)			370	373
Air consumption (l/min)			480	113
Weight (kg)			1.00	1.2
With right/left-hand rotation			Yes	-
<b>CP</b> 75032...	Ident. No.		110	-
<b>HAZET</b> 75032...	Ident. No.		-	221

HAZET = Prod. Gr. 738  
CP = Prod. Gr. 752

Source: Hahn+Kolb Werkzeuge GmbH  
Technical data subject to change.

Availability subject to country specific rules and regulations

www.iconridge.com

## BOSCH Pneumatic needle scaler

With 19-piece needle set

### Application:

For cleaning work, particularly for removing rust and paint, and for cleaning concrete formwork and boilers.

### Execution:

- With hardened steel needles
- With pistol grip

### Advantage:

- Needles adapt to elevations and depressions in the material

### Delivery:

Includes set of 19 needles, hexagon socket wrench, hose stem, in a box

### Notes:

Fitting conditioning unit 75424

### Technical data:

- Max. impact rate: 3600 U/min(rpm)
- Air consumption: 510 l/min
- Diameter of needle: 3 mm
- Connection thread: NPT 1/4 inch
- Inner hose diameter: 10 mm
- Length: 300 mm
- Weight: 1.9 kg



75091...

Ident. No.

010

Prod. Gr. 728

## BOSCH compressed air ratcheting screwdriver

for screws up to M6

### Application:

For light screw-driving work.

### Execution:

- With external torque adjustment

### Delivery:

hose nipple 1/4" thread, in box

### Notes:

for compatible conditioning unit, see no. 75424

Type	ratcheting screwdriver
BOSCH no.	0 607 460 401
Suitable for screw	M6
Min./max. tightening torque	1.5-10.0 Nm
Power output (W)	320
Air consumption (l/min)	510
Tool holding device	1/4-inch hexagon socket
Connection thread	G 1/4 inch
Inner hose Ø (mm)	10
Length (mm)	230
Weight (kg)	0.9
Coupling design	Overrunning clutch
75050...	Ident. No. 500

Prod. Gr. 728



Pistol design

## BOSCH Pneumatic ratchet screwdriver and pneumatic straight screwdriver

for screws up to M8

### Application:

for screw connections with high torque accuracy

### Advantage:

- low noise
- low wear
- long service life

### Delivery:

Additional handle, hose stem, locking hook, suspension bracket, in a box

### Notes:

for compatible conditioning unit, see no. 75424

Type	Straight screwdriver
BOSCH no.	0 607 461 206
Oil-free operation	No
Suitable for screw	M8
Min./max. tightening torque	5.5-15.0 Nm
Max. idle speed (U/min(rpm))	700
Power output (W)	400
Air consumption (l/min)	660
Tool holding device	1/4-inch quick-action chuck
Connection thread	G 1/4 inch
Inner hose Ø (mm)	10
Valve design	Thrust start
Weight (kg)	1.30
With right/left-hand rotation	Yes
Coupling design	Cut-off clutch
75050...	Ident. No. 820

Prod. Gr. 728



## pneumatic ratchet screwdriver

square drive 1/4"

### Application:

For heavy screw-driving work in poorly accessible places.

### Execution:

- **No. 75050:** Torque adjustable via the operating pressure
- **No. 75053:** Handle insulated against cold

### Advantage:

- **No. 75053:** Reduced vibration for effortless work

### Delivery:

In box

### Notes:

for compatible conditioning unit, see no. 75424



No. 75050



No. 75053

Model			CP826		9020-2
Suitable for screw			M6		-
Max. idle speed (U/min(rpm))			250		170
Air consumption (l/min)			396		180
Tool holding device			1/4-inch external square		1/4-inch external square
Connection thread			G 1/4 inch		G 1/4 inch
Inner hose Ø (mm)			6		10
Sound-pressure level			-		89
Head height (mm)			42.5		30.0
Length (mm)			203		165
Weight (kg)			0.50		0.5
With right/left-hand rotation			-		Yes
75050...	Ident. No.		190		-
75053...	Ident. No.		-		410

HAZET = Prod. Gr. 738  
CP = Prod. Gr. 752

## pneumatic ratchet screwdriver

square drive 1/2"

### Application:

**No. 75050 196:** for heavy-duty screw-driving work in poorly accessible spots and ideal for large fastenings

**No. 75050 200–75053 420:** For heavy screw-driving work in poorly accessible places.

### Execution:

- **No. 75053:** Handle insulated against cold

### Advantage:

- **No. 75053:** Reduced vibration for effortless work

### Delivery:

In box

### Notes:

for compatible conditioning unit, see no. 75424



No. 75050 200



No. 75053

Model			9022-2		MR-2410 B		CP7830HQ
Suitable for screw			-		M12		-
Max. idle speed (U/min(rpm))			160		135		190
Air consumption (l/min)			180		480		524
Tool holding device			1/2-inch external square		1/2-inch external square		1/2-inch external square
Connection thread			G 1/4 inch		G 1/4 inch		G 1/4 inch
Inner hose Ø (mm)			10		10		10
Sound-pressure level			88		-		-
Head height (mm)			62		50.0		45.0
Length (mm)			270		255		300
Weight (kg)			1.2		1.90		1.20
With right/left-hand rotation			Yes		Yes		-
75053...	Ident. No.		420		-		-
75050...	Ident. No.		-		200		-
75050...	Ident. No.		-		-		196

75053... = Prod. Gr. 738  
75050... = Prod. Gr. 752

## Pneumatic impact screwdriver

### Square drive 3/8"

#### Application:

**No. 75065:** extremely compact design enables work even in restricted spaces

**No. 75066:** for heavy-duty screw-driving tasks.

#### Execution:

##### No. 75065:

- 3 power levels in clockwise rotation, 1 power level in anti-clockwise rotation
- handle insulated against cold
- exhaust air routed through handle

##### No. 75066:

- clutch mechanism in oil bath
- Integrated power regulator

#### Advantage:

##### No. 75065:

- low-vibration
- one-handed operation for left-handed and right-handed users

##### No. 75066:

- clutch provides consistent operation and extremely long service life

#### Delivery:



**No. 75066:** In box

#### Notes:

for corresponding mini oiler see no. 75420



No. 75065

Model	9011M	CP721
Max. tightening torque (Nm)	461	650
Max. releasing torque (Nm)	461	-
Max. idle speed (U/min(rpm))	6500	11000
Air consumption (l/min)	85.2	300
Tool holding device	3/8-inch external square	3/8-inch external square
Hammer mechanism system	Jumbo hammer mechanism	Rocking-Dog striking mechanism
Length (mm)	92	146
Connection thread	G 1/4 inch	G 1/4 inch
Inner hose Ø (mm)	10.0	8.0
Working pressure (bar)	6.3	-
Sound-pressure level	90.3	87
Weight (kg)	1.24	1.20
With right/left-hand rotation	Yes	Yes
 <b>75065...</b>	Ident. No. <b>071</b>	-
 <b>75066...</b>	Ident. No. -	<b>007</b>

HAZET = Prod. Gr. 738

CP = Prod. Gr. 752

## Pneumatic impact screwdriver

### Square drive 1/2 inch

#### Application:

**No. 75065 016, 75065 031:** For heavy-duty screw-driving tasks.

**No. 75065 020, 75066 110-75066 310:** For heavy screw-driving work.

#### Execution:

- 3 power levels in clockwise rotation, 1 power level in anti-clockwise rotation
- No. 75065 016:** exhaust air routed through handle
- No. 75065 016-75066 110:** Handle insulated against cold
- No. 75065 020:** Exhaust air routed through handle

#### Advantage:

##### No. 75065 016:

- One-handed operation for left-handed and right-handed users
- Extremely compact design enables work even in restricted spaces

##### No. 75065 020:

- Specially heat-treated inner parts to minimize wear

#### Delivery:

**No. 75065 020, 75066 110-75066 310:** In box

#### Notes:

**No. 75065 020-75066 310:** for corresponding mini oiler see no. 75420



No. 75065 020  
9012 SPC





No. 75065 031  
9012 EL-SPC



No. 75066 310



No. 75065 016

Model	-	9012 SPC	9012 EL-SPC	-	-
BOSCH no.	-	-	-	0 607 450 628	0 607 450 615
Suitable for screw	M16	M16	M16	-	M16
Max. tightening torque (Nm)	678	750	1054	310	350
Max. releasing torque (Nm)	1200	850	1700	-	-
Max. idle speed (U/min(rpm))	8800	7000	8000	7000	7000
Air consumption (l/min)	127	127	139	510	540
Tool holding device	1/2-inch external square	1/2-inch external square	1/2-inch external square	1/2-inch external square	1/2-inch external square
Hammer mechanism system	Jumbo hammer mechanism	Pin impact mechanism	Twin hammer mechanism	Pin impact mechanism	Twin hammer mechanism
Length (mm)	80	200	-	190	200
Connection thread	G 1/2 inch	G 1/4 inch	G 1/4 inch	NPT 1/4 inch	NPT 1/4 inch
Inner hose Ø (mm)	10.0	10.0	10	10.0	10.0
Working pressure (bar)	6.3	6.3	6.3	-	-
Sound-pressure level	92.2	92.1	-	-	-
Weight (kg)	1.27	2.6	1.98	2.30	2.40
With right/left-hand rotation	Yes	Yes	Yes	Yes	Yes
 <b>75065...</b>	Ident. No. <b>016</b>	<b>020</b>	<b>031</b>	-	-
 <b>75066...</b>	Ident. No. -	-	-	<b>110</b>	<b>310</b>

BOSCH = Prod. Gr. 728

HAZET = Prod. Gr. 738

Source: Hahn+Kolb Werkzeuge GmbH

Technical data subject to change.

Availability subject to country specific rules and regulations

www.iconridge.com

## Pneumatic impact screwdriver

## Square drive 3/4 inch

## Application:

**No. 75065:** For heavy screwing work

**No. 75066 031:** For heavy screw-driving work, particularly for suspension, automotive and bus maintenance, agricultural implements and construction implements.

**No. 75066 035:** for heavy-duty screw-driving tasks.

## Execution:

■ **No. 75065:**

- Handle insulated against cold
- exhaust air routed through handle

■ **No. 75065 041-75066 031:** 3 power levels in clockwise rotation, 1 power level in anti-clockwise rotation

■ **No. 75066 035:**

- lightweight with magnesium clutch housing
- insulating and lightweight composite handle

- S2S simple changeover between forwards and reverse: patented Side-to-Side technology
- highly sensitive, ergonomic trigger

## Advantage:

- **No. 75066 031:** Automatic full unscrewing torque in anti-clockwise rotation
- **No. 75066 035:**
  - extremely well-balanced tool maximises user comfort
  - unique, extremely convenient changeover technology
  - excellent performance to maximise efficiency

## Delivery:

**No. 75066 031:** In box

## Notes:

**No. 75066:** for corresponding mini oiler see no. 75420



No. 75066 031  
CP 772 H



No. 75065

Model	-	CP772H	CP7769
Suitable for screw	M32	M22	-
Max. tightening torque (Nm)	1085	950	1464
Max. releasing torque (Nm)	1890	-	1950
Max. idle speed (U/min(rpm))	7300	4200	7000
Air consumption (l/min)	153	678	14.7
Tool holding device	3/4-inch external square	-	-
Hammer mechanism system	Twin hammer mechanism	Pin impact mechanism	Twin hammer mechanism
Length (mm)	188	244	214
Connection thread	-	3/8 inch	G 3/8 inch
Inner hose Ø (mm)	10.0	10.0	13
Working pressure (bar)	6.3	-	-
Sound-pressure level	104	-	-
Weight (kg)	2.1	4.70	3.4
With right/left-hand rotation	Yes	Yes	Yes
75065...	Ident. No. 041	-	-
75066...	Ident. No. -	031	035

HAZET = Prod. Gr. 738

CP = Prod. Gr. 752



## Pneumatic straight grinder

With lever valve

## Application:

**Ident. No. 025, 075:** For fine finishing, smoothing and deburring.

**Ident. No. 055:** For fine finishing, smoothing and deburring, for powerful working.

**Ident. No. 095:** For fine finishing, smoothing, deburring and polishing.

## Execution:

- Environmentally friendly owing to central air discharge

- Air discharge to the rear

## Delivery:

**Ident. No. 025:** Straight grinder with complete hose unit and silencer, in box

**Ident. No. 055-095:** In box

## Notes:

for compatible conditioning unit, see no. 75424



Ident. No. 025  
Model SRH 3-85/2



Ident. No. 055-075  
Models SRH 6-45/2, SRH 8-30/2



Ident. No. 095  
Model SRH 8-20/2

Model	SRH 3-85/2	SRH 6-45/2	SRH 8-30/2	SRH 8-20/2
Valve design	Lever valve	Lever valve	Lever valve	Lever valve
Max. idle speed (U/min(rpm))	85000	45000	30000	20000
Power output (W)	80	260	240	300
Air consumption (l/min)	170	380	450	500
Connection thread	M6	R 1/8 inch	R 1/8 inch	R 1/8 inch
Inner hose Ø (mm)	4.5	7.0	7.0	7.0
Length (mm)	180	196	189	191
Ø of housing (mm)	19.5	32	31	41
Max. clamping Ø (mm)	3	6	8	8
Suitable for max. sanding block Ø (mm)	6	10	16	24
Max. HM rotating milling cutter Ø (mm)	4	8	10	12
Weight (kg)	0.17	0.36	0.41	0.62
75036...	Ident. No. 025	055	075	095

Prod. Gr. 748

Accessories for			75036 025	75036 055	75036 075	75036 095
75036...	Spare collet chuck ZG 5/3	Ident. No.	630 ●	-	-	-
75036...	Spare collet chuck ZG 4/3	Ident. No.	-	600 ●	-	-
75036...	Spare collet chuck ZG 4/6	Ident. No.	-	610 ●	-	-
75048...	Hose unit 77 N 3665	Ident. No.	-	770 ●	770 ●	-
75036...	Spare collet chuck ZG 7/3	Ident. No.	-	-	640 ●	640 ●
75036...	Spare collet chuck ZG 7/6	Ident. No.	-	-	660 ●	660 ●
75036...	Spare collet chuck ZG 7/8	Ident. No.	-	-	680 ○	680 ○
75048...	Hose unit 78 N 3665	Ident. No.	-	-	-	780 ●



## Pneumatic straight grinder

Speed regulated, with lever valve

### Application:

For milling, roughing and rough machining.

### Execution:

- With double bearing of the drive spindle for particularly quiet running during milling work
- Controlled speed, for constant speeds and low air consumption when idling

- With energy-saving motor technology

### Delivery:

With 6-mm collet chuck and key for changing tools, in box

### Notes:

for compatible conditioning unit, see no. 75424



Ident. No. 240  
Model SARH 830



Ident. No. 280  
Model SARH 820

Model	SARH 830	SARH 820
Valve design	Lever valve	Lever valve
Max. idle speed (U/min(rpm))	30000	20000
Power output (W)	260	300
Air consumption (l/min)	400	500
Connection thread	R 1/8 inch	R 1/8 inch
Inner hose Ø (mm)	7.0	7.0
Length (mm)	189	221
Ø of housing (mm)	31	38
Max. clamping Ø (mm)	8	8
Suitable for max. sanding block Ø (mm)	16	24
Max. HM rotating milling cutter Ø (mm)	10	12
Weight (kg)	0.52	0.83
75036...	Ident. No. 240 ●	280 ●

Prod. Gr. 748

## Pneumatic straight grinder

### Application:

**No. 75037 100:** For fine grinding work, particularly in metalworking crafts and bodywork construction.

**No. 75037 300:** For precision grinding work.

**No. 75039:** For grinding and deburring, particularly in metal work, toolmaking, form construction and bodywork construction.

### Execution:

- No. 75037:**
  - Controlled rotational speed for constant speeds
  - With locking switch
- No. 75037 100:** Air discharge to the rear

### No. 75037 300:

- Grinding spindle with high rotational accuracy and low axial play
- Rear air exhaust

### Advantage:

- No. 75039:** Single-handed operation

### Delivery:

**No. 75037:** With 6-mm collet chuck and key for changing tools, in box

### Notes:

for compatible conditioning unit, see no. 75424




No. 75037 300



No. 75039



Model	-	MG-7206B	-
BOSCH no.	0 607 260 100	-	0 607 252 103
Version	Straight	Straight	Straight
Valve design	Gate valve	Lever valve	Gate valve
Max. idle speed (U/min(rpm))	22000	23000	21000
Power output (W)	290	380	550
Air consumption (l/min)	510	500	750
Connection thread	G 1/4 inch	G 1/4 inch	G 1/4 inch
Inner hose Ø (mm)	10.0	6.5	10.0
Length (mm)	200	-	320
Ø of housing (mm)	48	-	54
Max. clamping Ø (mm)	6	6	6
Suitable for max. sanding block Ø (mm)	40	25	40
Working pressure (bar)	-	6.3	-
Weight (kg)	0.58	0.56	1.10
<b>BOSCH</b> 75037...	Ident. No. 100	-	300
 75039...	Ident. No. -	010	-

BOSCH = Prod. Gr. 728  
YOKOTA = Prod. Gr. 752

## pneumatic rod grinder

### Application:

for grinding, buffing, polishing and deburring.

### Execution:

- sound-pressure level: 79 db(A)
- speed regulation with adjusting wheel
- max. operating pressure: 6.3 bar
- **Ident. No. 211:** straight version
- **Ident. No. 221:** angled version

### Advantage:

- **Ident. No. 221:** Ideal for working in confined spaces

### Notes:

for compatible conditioning unit, see no. 75424

### Technical data:

- Power output: 224 W
- Air consumption: 74 l/min
- Connection thread: G 1/4 inch
- Inner hose diameter: 10.0 mm
- Max. clamping diameter: 6 mm
- Working pressure: 6.3 bar



Ident. No. 211



Ident. No. 221

Model	9032N-1	9032N-5
Version	Straight	Offset
Valve design	Lever valve	-
Max. idle speed (U/min(rpm))	25000	20000
Min./max. idle speed	2000-25000 U/min(rpm)	2000-20000 U/min(rpm)
Length (mm)	157	155
Weight (kg)	0.40	0.5
<b>75038...</b>	Ident. No. 211	221
	•	•

Prod. Gr. 738

## pneumatic micro and mini rod grinder

### Application:

For precise machining of workpieces even in extremely cramped conditions

### Execution:

- **Ident. No. 040:** 6-mm chuck with 3-mm adapter to accommodate both sanding block sizes

### Notes:

**Ident. No. 030:** for compatible conditioning unit, see no. 75424

**Ident. No. 040:** For compatible conditioning unit, see no. 75424

### Technical data:

- Connection thread: G 1/4 inch
- Inner hose diameter: 5 mm
- Working pressure: 6.3 bar



Ident. No. 040



Ident. No. 030



Model	9032M	9032M-36
Version	Micro	MINI
Max. idle speed (U/min(rpm))	60000	30000
Power output (W)	190	224
Air consumption (l/min)	75	43.7
Length (mm)	132	150
Max. clamping Ø (mm)	3	-
Weight (kg)	0.21	0.38
<b>75038...</b>	Ident. No.	<b>030</b> <b>040</b>

Prod. Gr. 738



## Pneumatic turbine grinder – oil-free operation

80 W

### Execution:

- **Ident. No. 005:** Exhaust air discharge to the front
- **Ident. No. 405:**
  - Air discharge to the rear
  - Controlled rotational speed for constant speeds
  - Run-out brake for increased safety

### Advantage:

- Elastic spindle bearing for improved surface quality and lower wear on cutters

### Delivery:

Includes collet chuck ZG 5/3 mm, complete hose unit and collet chuck key size 6 + 8, in box

### Notes:

for compatible conditioning unit, see no. 75424



Ident. No. 005



Ident. No. 405



Example application

Model	TVD 3-100/2	T 365/2
Valve design	Rotary valve	Gate valve
Max. idle speed (U/min(rpm))	100000	65000
Air consumption (l/min)	180	180
Inner hose Ø (mm)	4.5	4.0
Length (mm)	139.5	166
Ø of housing (mm)	31	23/38
Max. clamping Ø (mm)	3	3
Suitable for max. sanding block Ø (mm)	5	8
Max. HM rotating milling cutter Ø (mm)	3	6
Weight (kg)	0.25	0.22
<b>75036...</b>	Ident. No.	<b>005</b> <b>405</b>

Prod. Gr. 748

Accessories for	75036 005	75036 405
<b>75036...</b> Spare collet chuck ZG 5/3	Ident. No. <b>630</b>	Ident. No. <b>630</b>

## BOSCH pneumatic angle grinder

disc diameter 125 mm

### Application:

For grinding work particularly in bodywork and in mechanics' workshops.

### Execution:

- Controlled rotational speed for constant speeds
- With dead-man and locking switch
- Handle insulated against cold
- Air discharge to the rear

### Delivery:

With key for changing tools

### Notes:

for compatible conditioning unit, see no. 75424

### Technical data:

- Washer diameter: 125 mm
- Thread dimension of spindle: M14
- Connection thread: NPT 1/4 inch
- Inner hose diameter: 10 mm
- Weight: 1.4 kg



BOSCH no.	0 607 352 114	0 607 352 113
Max. idle speed (U/min(rpm))	7000	12000
Power output (W)	-	550
Air consumption (l/min)	930	570
<b>BOSCH</b> <b>75042...</b>	Ident. No. <b>041</b> <b>056</b>	Ident. No. <b>056</b>

Prod. Gr. 728





## pneumatic angle grinder

suitable for max. 50–75 mm abrasive disc

### Application:

**Ident. No. 116:** For grinding work in poorly accessible places.

**Ident. No. 125:** Very well-suited to work with high performance and precision even in inaccessible locations.

### Execution:

▪ With collet chuck system for holding a wide variety of tools

#### Ident. No. 116:

- Small, powerful angle grinder with flat head, stable drive and double storage
- Air discharge to the rear

#### Ident. No. 125:

- Angle grinder with extended neck 90° and small angle head

- Rear air exhaust

### Delivery:

With collet chuck as per table, in box

### Notes:

for compatible conditioning unit, see no. 75424

### Technical data:

- Max. idle speed: 20000 U/min(rpm)
- Power output: 300 W
- Air consumption: 500 l/min
- Connection thread: G 1/8 inch
- Sound-pressure level: 78
- Inner hose diameter: 7 mm
- Max. clamping diameter: 6 mm



Ident. No. 116  
Model WRH 6-20/3 Z



Ident. No. 125  
Model WRD 6-20/2 ZL 90

Model	WRH 6-20/3 Z	WRD 6-20/2 ZL 90
Type	-	with extended neck 90°
Valve design	Lever valve	Rotary valve
Washer Ø (mm)	75	50
Head height (mm)	70	48
Length (mm)	200	330
Max. HM rotating milling cutter Ø (mm)	12	10
Weight (kg)	0.77	0.93
75042...	Ident. No. 116	125

Prod. Gr. 748

Accessories for			75042 116	75042 125
75036... 4/3	Spare collet chuck ZG	Ident. No.	600	600
75036... 4/6	Spare collet chuck ZG	Ident. No.	610	610
75048...	Hose unit 78 N 3665	Ident. No.	780	780



## Pneumatic sheet metal shears 9036N-5

### Application:

Ideal for cuts with small radii (min. 4.5 mm). Also suitable for cutting plastic.

### Execution:

- Continuous speed control via a rotary knob on the handle back
- Cold-insulating handle

### Delivery:

incl. coupling connector nominal width 7.2

### Technical data:

- Model: 9036N-5
- Air consumption: 104 l/min
- Working pressure: 6.3 bar
- Inner hose diameter: 10 mm
- Max. cutting capacity of steel: 1.2 mm
- Max. cutting capacity in aluminium: 1.6 mm
- Cutting width: 4.5 mm
- Length: 185 mm
- Weight: 1 kg
- Max. sound-pressure-level: 80 dB



Pneumatic sheet metal shears 9036N-5	75033...	Ident. No.	200
spare part kits for sheet metal shears and nibblers	75033...	Ident. No.	250

Prod. Gr. 738



## pneumatic sheet metal nibbler 9036N-1

### Application:

for high-precision cutting of all aluminium and steel sheets. ideal for straight cuts, also suitable for contour cutting.

### Execution:

- continuous speed control via a rotary knob on the handle back
- with high-performance blade for maximum cutting performance
- cold-insulating handle and cold-insulated housing
- vibration-dampened through double-bearing spindle

### Delivery:

incl. coupling connector nominal width 7.2

### Technical data:

- Model: 9036N-1
- Air consumption: 104 l/min
- Working pressure: 6.3 bar
- Inner hose diameter: 10 mm
- Max. cutting capacity of steel: 1.2 mm
- Max. cutting capacity in aluminium: 1.6 mm
- Cutting width: 4.5 mm
- Length: 255 mm
- Weight: 1 kg
- Max. sound-pressure-level: 80 dB



pneumatic sheet metal nibbler 9036N-1	75033...	Ident. No.	100
spare part kits for sheet metal shears and nibblers	75033...	Ident. No.	150

Prod. Gr. 738

## ATORN® Pneumatic blow-out guns - compressed air connection at the bottom

Forged aluminium, silver anodised

### Application:

For cleaning workpieces, machine parts and the like.

### Execution:

- Airflow can be regulated roughly by actuation lever
- Valve head made of oil-resistant special rubber
- Air jacket nozzle for eye protection with 8 laterally exiting nozzle bores
- Safety nozzle for noise reduction by approx. 25 dB

### Delivery:

In box

### Notes:

Standard nozzle (ref. no. 060-200): nozzle can be extended up to 5 mm

### Technical data:

- Connection thread: G 1/4 inch
- Nozzle connection thread: M12 x 1.25



No. 75175 200-75175 210  
Image: straight version



No. 75175 060-75175 130  
Image with standard nozzle



No. 75176  
Image with air jacket nozzle



No. 75177  
Image with safety nozzle

Nozzle design			Hose nozzle With normal nozzle	Hose nozzle With safety nozzle	Hose nozzle With air sheathed air nozzle	Plug-in nipple With normal nozzle
Max. working pressure (bar)	Inner hose Ø (mm)	Nozzle size (mm)	75175... Ident. No.	75177... Ident. No.	75176... Ident. No.	75175... Ident. No.
-	6	1.5	060	060	060	-
-	9	1.5	090	090	090	-
-	13	1.5	130	130	-	-
10	-	1.5	-	-	-	200
8	-	2.0	-	-	-	210

Prod. Gr. 790



## ATORN® Pneumatic blow-out guns - compressed air connection at the top

Forged aluminium, silver anodised

**Application:**

For cleaning workpieces, machine parts and similar.

**Execution:**

- Continuously variable flow of air (via lever)
- Standard nozzle
- Compressed air connection on top (coupling connector DN 7.2)

**Advantage:**

- Compressed air connection possible via a suspended power supply unit

**Technical data:**

- Max. working pressure: 10 bar
- Connection thread: G 1/4 inch
- Nozzle size: 1.5 mm
- Nozzle connection thread: M12 x 1.25



Connection on top

75178... Ident. No. 300

Prod. Gr. 790

## ATORN® Nozzles for blow-out guns

Connecting thread: M12 x 1.25

**Application:**

**No. 75177 135:** For pneumatic blow-out gun no. 75176

**No. 75177 140:** For pneumatic blow-out gun no. 75177

**No. 75177 145:** For noise reduction and safe handling of compressed air

**No. 75177 200:** As a replacement for pneumatic blow-out gun no. 75175

**No. 75178:** For pneumatic blow-out gun no. 75174-75177

**No. 75177 145:**

- Satisfies OSHA requirements
- In line with TRLV-LÄRM (German occupational safety directive on noise and vibration)
- Conforms to EC machine directive

**No. 75178 020:** Low noise**Execution:**

- No. 75177 140:** With sintered insert

**Technical data:**

- Nozzle connection thread: M12 x 1.25



No. 75177 135



No. 75177 140



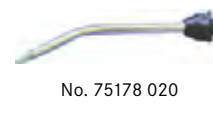
No. 75177 145



No. 75177 200



No. 75178 015



No. 75178 020



No. 75178 110-75178 115

	Type	Form	Length (mm)	Ident. No.	
75177...	Protective nozzle			Ident. No.	135
75177...	Noise control nozzle			Ident. No.	140
75177...	Safety nozzle			Ident. No.	145
75177...	Aluminium standard nozzle			Ident. No.	200
75178...	Extension nozzle	Curved	160	Ident. No.	015
75178...	Extension nozzle	Straight	115	Ident. No.	110
75178...	Extension nozzle	Straight	165	Ident. No.	115
75178...	Safety extension nozzle	Curved	110	Ident. No.	020

Prod. Gr. 790

## ewo Low-noise energy-saving nozzle

For blow-out guns

**Application:**

For controlling the flow of air and reducing pressure.

**Execution:**

- aluminium basic body, other parts POM
- Volume flow: 10 to 95 l/min at 6 bar
- Controlled by turning the operating sleeve to one of 7 notches marked +/-, total 125°

**Advantage:**

- Regulating the flow downwards prevents sharp and pointed chips or harmful fluids flying around uncontrollably, for safe working.
- Saving energy and costs
- Additional effect is noise reduction

**Technical data:**

- Nozzle connection thread: M12 x 1.25
- Max. working pressure: 10 bar



75178... Ident. No. 200

Prod. Gr. 7AC

## ewo Pneumatic blow-out gun

Made from blue plastic

**Application:**  
For cleaning workpieces, machine parts and the like.

### Execution:

- With 30° offset extension, rotatable and dismountable
- Continuously variable air flow regulation

### Delivery:

In box

### Notes:

Nozzles and extensions from aluminium series (no. 75177-75178) can be used

### Technical data:

- Connection thread: G 1/4 inch
- Nozzle size: 2.3 mm
- Nozzle connection thread: M12 x 1.25
- Air consumption: 120 l/min



Inner hose Ø (mm)	Hose nozzle	Plug-in nipple
	75174... Ident. No.	75174... Ident. No.
6	006	-
9	009	-
13	013	-
-	-	050

Prod. Gr. 7AC

## Pneumatic blow-out gun

With low-noise multi-channel nozzle

**Application:**  
For targeted and precise blowing out of workpieces and injection moulded parts.

### Execution:

- Compressed air flow regulated via counter screw
- Nozzle made from steel, therefore no breakage of nozzle tip
- Noise level at 6 bar = 79 dB(A)

### Delivery:

In box

### Technical data:

- Max. working pressure: 10 bar
- Connection thread: G 1/4 inch
- Sound-pressure level: 79 dB
- Inner hose diameter: 6 mm
- Nozzle size: 65.0 mm



75179... Ident. No. 200

Prod. Gr. 753

## EJN Compressed air and liquid blow guns, series 208

for cleaning with compressed air or non-explosive water-based liquids

**Application:**  
For cleaning work using compressed air, coolant or non-explosive water-based liquids.

### Execution:

- Ident. No. 003-006:**
  - Nozzle made of brass
  - With flow regulation
- Ident. No. 105:** Consisting of blow gun, silencer, rubber nozzle (diameter 14 mm), protective shield

**Ident. No. 005-006:** Satisfies OSHA and ArbStättV (German workplaces ordinance) requirements

### Delivery:

**Ident. No. 105:** In box

### Technical data:

- Max. working pressure: 16 bar
- Burst pressure: 64 bar
- Min./max. temperature conditions: -20 to +60 °C



Ident. No. 005

### Advantage:

- Ergonomic handle piece for working comfortably



Magnetic holder

Model	With 90 mm, permanently attached pipe	Removable 90 mm pipe	Star-Tip, low-noise, permanently attached pipe	Star-Tip, low-noise, removable pipe	Blow gun blister pack
Connection thread	R 1/4 inch	R 1/4 inch	R 1/4 inch	R 1/4 inch	G 1/4 inch
Sound-pressure level (dB)	96	94	79	79	96
Weight (kg)	0.096	0.096	0.096	0.096	-
75179... Ident. No.	003	004	005	006	105

Prod. Gr. 753

Accessories for	Ident. No.	75179 003	75179 004	75179 005	75179 006	75179 105
75103... Magnetic holder	Ident. No.	190	190	190	190	190



## Compressed air and liquid blow guns MultiFLOW

for cleaning jobs using water, coolant or compressed air

### Application:

For cleaning work using compressed air, coolant or non-explosive water-based liquids.

### Execution:

- Precisely adjustable flow rate regulation
- Satisfies OSHA requirements
- Ident. No. 010:**
  - Zinc-plated hardened steel nipple (Ø 7.6 mm)
  - Compatible with all standard pneumatic systems
  - Planar or pointed jet with adjustable jet nozzle
- Ident. No. 020:** Brass nipple (Gardena nipple: particularly suitable for liquids)
- Ident. No. 020-030:** Flat or concentrated jet with adjustable jet nozzle

- Ident. No. 030:** Zinc-plated steel adapter, 1/4" female thread

### Notes:

**Ident. No. 010:** Compatible coupling, e.g. no. 75135 010-113

### Technical data:

- Min./max. flow capacity: 5-25 l/min
- Min. air consumption: 200 l/min
- Max. air consumption: 1200 l/min
- Max. working pressure: 16 bar
- Burst pressure: 64 bar
- Connection thread: R 1/4 inch
- Min./max. sound-pressure-level: 79-101 dB
- Min./max. temperature conditions: -20 to +60 °C



Removes swarf reliably, even in places difficult to access

Efficient cleaning of machines using coolant

Type		320 nipple	Liquid nipple	Steel nipple, 1/4 inch female thread
Weight (kg)		0.191	0.210	0.205
75103...	Ident. No.	010	020	030

Prod. Gr. 753

Accessories for			75103 010	75103 020	75103 030
75103...	Magnetic holder	Ident. No.	190	190	190



## Safety washing guns

With lever and regulating wheel

### Application:

For cleaning or washing machines and parts in machining areas using water or drilling fluid.

### Execution:

- With nozzle
- With rubber handle
- Ident. No. 010:**
  - forged aluminium housing
  - anodised, brass-coloured
  - Pneumatic connection: hose nozzle
- Ident. No. 021:**
  - Forged aluminium
  - anodised, colourless



Ident. No. 010



Ident. No. 021

Model		Multiclean	Proficlean
Min./max. flow capacity		4-13 l/min	4-10 l/min
Max. working pressure (bar)		40	20
Connection thread		G 1/2 inch	G 1/2 inch
Nozzle size (mm)		2	2
Min./max. temperature conditions		+5 to +90 °C	+5 to +90 °C
Weight (kg)		1.050	0.700
75202...	Ident. No.	010	021

Prod. Gr. 7AC

## ATORN® Compressed air spray gun

With pivoting nozzle

**Application:**  
For spraying low-viscosity media such as oils.

- Jet adjustable with nozzle

**Execution:**

- Matte translucent plastic cup (container volume approx. 0.7 l)

**Technical data:**

- Max. working pressure: 6 bar
- Nozzle size: 3 mm
- Weight: 0 kg



75201...

Ident. No.

010

Prod. Gr. 790

## HAZET Suction and blow gun

Reversible

**Application:**  
For suctioning dirt into dust bag and for blowing out surfaces

**Advantage:**

- Special deflector insert protects bag against damage, e.g. from metal chips

**Execution:**

- Metal housing
- With single hand switch
- Vacuum level: 7.5 mmHg

**Technical data:**

- Connection thread: IT 1/4 inch
- Sound-pressure level: 92 dB



75033...

Ident. No.

050

Prod. Gr. 738

## ewo Pneumatic tyre inflator

0-12 bar, can be calibrated; EU type approval

**Application:**  
For filling, bleeding and testing tyre pressure in workshops and filling stations.

- With safety against overpressure
- Can be loaded up to final display value
- With plug-in nipple
- Scale interval in bar and psi

**Execution:**

- Manometer with plastic protective cap for protection against shock and impacts
- Manometer diameter: 80 mm

**Technical data:**

- Min./max. pressure measuring range: 0-12 bar



Ident. No. 030



Ident. No. 040



Ident. No. 050

Type		With automotive valve lever connector	With double-sided filling station connector	With clip connector
75180...	Ident. No.	030	040	050

Prod. Gr. 7AC

## metabo® Compressed air hose reels

In rotating, manual and automatic design

**Application:**  
**Ident. No. 210–231:** For space-saving storage of pneumatic hoses and rolling up correctly.

**Ident. No. 241:** for space-saving storage of pneumatic hoses and correct rolling-up.

**Execution:**

- with 1/4" universal quick connection coupling and 1/4" plug-in nipple
- **Ident. No. 220:** With ergonomic handle for carrying comfort

**Ident. No. 231:**

- With wall and ceiling mounting bracket
- Locking and rolling up simply by pulling

**Ident. No. 241:**

- with wall and ceiling mounting bracket
- lock and roll up simply by pulling

**Technical data:**

- Material of the hose: Polyurethane



Ident. No. 210



Ident. No. 220



Ident. No. 231



Ident. No. 241



Model	ST 200 pivot-mounted	SA 100 manual	SA 250 automatic	SA 312 automatic
Type	Rotatable	Manual	Automatic	Automatic
Hose length (m)	30	20	8	12
Inner hose Ø (mm)	9	9	8	8
Outer Ø of hose (mm)	12.5	15.0	12.0	12.0
Weight (kg)	8.00	4.00	2.90	8.0
Drum body material	Plastic	Plastic	Plastic	Metal
Max. working pressure (bar)	12	15	15	12
With connection male coupling	Yes	Yes	Yes	-
<b>75014...</b>	Ident. No. <b>210</b>	<b>220</b>	<b>231</b>	<b>241</b>

Prod. Gr. 745

## metabo® Spiral hoses

Made from PA or PU (polyurethane)

### Application:

For connection to compressed-air tools and compressed-air machines.

### Execution:

- For a clearly organised workplace
- For reducing the risk of accidents

- Ident. No. 002–004:** With brass quick-action coupling and plug-in nipple
- Ident. No. 110–140:**
  - With rotating brass connection parts
  - With straight input and output piece (10 and 50 cm)



Hose length (m)	5.0	7.5	5.0	5.0	10.0	10.0
Inner hose Ø (mm)	8.0	8.0	6.5	8.0	6.5	8.0
Connection thread	-	-	G 1/4 inch	G 1/4 inch	G 1/4 inch	G 1/4 inch
Max. working pressure (bar)	8	8	10	10	10	10
<b>75051...</b>	Ident. No. <b>002</b>	<b>004</b>	<b>110</b>	<b>120</b>	<b>130</b>	<b>140</b>

Prod. Gr. 758

## prevost Pneumatic spiral hose

made of polyurethane

### Application:

For connection to compressed-air tools and compressed-air machines.

### Execution:

- With one fixed and one rotating screwed joint with ball bearing, can also be rotated with slight pressure

- connections pre-coated with PTFE, therefore scratch-resistant
- Max. pressure: 8 bar
- Max. temperature: 70°C

### Advantage:

- Extremely flexible for better handling



Hose length (m)	2.0	4.0	4.0	6.0	8.0
Outer Ø of hose (mm)	8	8	10	10	10
Inner hose Ø (mm)	5.0	5.0	6.5	6.5	6.5
Connection thread	G 1/4 inch	G 1/4 inch	G 1/4 inch	G 1/4 inch	G 1/4 inch
Max. working pressure (bar)	10	10	10	10	10
<b>75054...</b>	Ident. No. <b>015</b>	<b>025</b>	<b>035</b>	<b>045</b>	<b>055</b>

Prod. Gr. 758

## CEJN Pneumatic spiral hose eSafe

Series 320

### Application:

for connection to compressed-air tools and compressed-air machines.

### Execution:

- steel coupling and nipple
- ends and rotary joint axially offset on both sides

- max. pressure: 10 bar

### Advantage:

- spark-resistant for work in welding environments
- Coupling and nipple (DN 7.6) pre-installed for immediate use



Hose length (m)	2.0	4.0	6.0	4.0	6.0
Outer Ø of hose (mm)	10	10	10	12	12
Inner hose Ø (mm)	6.5	6.5	6.5	8.0	8.0
Max. working pressure (bar)	10	10	10	10	10
<b>75055...</b>	Ident. No. <b>011</b>	<b>021</b>	<b>031</b>	<b>041</b>	<b>051</b>

Prod. Gr. 758



## Compressed air hoses

in various designs; for compressed air and water

### Execution:

- Cadmium- and silicone-free
- **Ident. No. 305-325:**
  - PVC fabric hose with inlay for a wide range of applications
  - Partly oil-, gasoline- and alkali-resistant
  - Abrasion-proof, weatherproof and UV-resistant
  - Unlimited storage life
- **Ident. No. 350-360:**
  - Highly flexible three-ply fabric hose with canvas inlay

- Made from high-quality polyester fibres in soft technology
- Oil- and petrol-repellent
- Pressure- and UV-resistant

### Technical data:

- Material of the hose: PVC
- Max. working pressure: 15 bar
- Burst pressure: 60 bar
- Hose length: 50 m



Ident. No. 305-325



Ident. No. 350-360

Colour	Transparent	Transparent	Transparent	Transparent	Transparent	Light blue	Light blue	Light blue
Inner hose Ø (mm)	6.0	8.0	9.0	10.0	13.0	6.3	9.0	12.7
Outer Ø of hose (mm)	12.0	14.0	15.0	16.0	20.0	11.0	14.5	19.0
Cladding (mm)	3.00	3.00	3.00	3.00	3.50	2.35	2.75	3.15
Min./max. temperature conditions	-15 to +60 °C	-15 to +60 °C	-15 to +60 °C	-15 to +60 °C	-15 to +60 °C	-20 to +60 °C	-20 to +60 °C	-20 to +60 °C
75390...	Ident. No. 305	310	315	320	325	350	355	360

Prod. Gr. 7AC



## PUR compressed air hose

With fabric lining

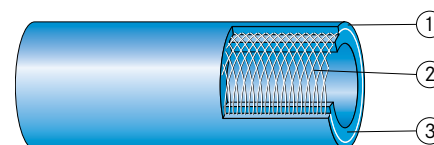
### Execution:

- Shell made of ester-based polyurethane
- Polyester fibre fabric inlay
- Inner and outer layers made of polyester fibres
- Resistant to oil, solvents and non-aqueous solutions

- Straight version

### Advantage:

- High elasticity, extremely flexible
- Long service life
- Excellent resistance to oil, solvents and non-aqueous solutions



Material of the hose	Polyurethane/polyester fibres	Polyurethane/polyester fibres	Polyurethane/polyester fibres	Polyurethane/polyester fibres	Polyurethane/polyester fibres
Colour	Black   Blue	Blue	Blue	Blue	Blue
Inner hose Ø (mm)	6.5	8.0	9.5	11.0	13.0
Outer Ø of hose (mm)	10.0	12.0	13.5	16.0	18.0
Max. working pressure (bar)	16	16	12	12	10
Burst pressure (bar)	64	64	48	48	40
Hose length (m)	50	50	50	50	50
Min./max. temperature conditions	-30 to +60 °C	-30 to +60 °C	-30 to +60 °C	-30 to +60 °C	-30 to +60 °C
75391...	Ident. No. 010	020	030	040	050

Prod. Gr. 758

## metabo® BASIC mobile workshop compressors

IP 54 degree of protection, for simple commercial applications

### Execution:

#### Ident. No. 214:

- For single-phase alternating current
- Oil-lubricated piston compressor
- Pressure reducer with manometer for controllable working pressure
- Additional manometer for displaying tank pressure
- Rubberised, robust wheels and handle for mobile applications

#### Ident. No. 312: oil-lubricated piston compressor

#### Ident. No. 312-380:

- for single-phase alternating current
- pressure reducer with manometer for controllable working pressure
- additional manometer for displaying tank pressure
- rubberised, robust wheels and handle for mobile applications

#### Ident. No. 380: oil-free piston compressor

- 10-year tank warranty against rust penetration
- No testing necessary before commissioning

#### Ident. No. 312-380:

- pressure switch with starter valve for reliable cold start
- 10-year boiler warranty against rust penetration
- no testing necessary before commissioning

- Ident. No. 380: easier transport and reduced service costs thanks to oil-free piston compressor

### Delivery:

Ident. No. 214: Universal quick-release coupling

Ident. No. 312: universal quick-release coupling

Ident. No. 380: universal quick-release coupling, pull handle with rubber coating

### Technical data:

- Working pressure: 8 bar
- Max. rotation speed: 2850 U/min(rpm)
- With overload protection: Yes



Ident. No. 214



Ident. No. 312



Ident. No. 380

Model	Basic 250-50 W	Basic 250-24 W	Basic 280-50 W OF
Intake air capacity (l/min)	200	200	280
Delivery quantity effective at 80% max. pressure (l/min)	95	95	130
Filling capacity (l/min)	110	110	140
Tank capacity (l)	50	24	50
Power input (W)	1500	1500	1700
Sound-pressure level (dB)	97	97	85
Length x width x height	830 x 445 x 715 mm	630 x 406 x 630 mm	770 x 386 x 662 mm
Weight (kg)	32.0	27.0	30
75290...	Ident. No. 214	Ident. No. 312	Ident. No. 380

Prod. Gr. 745

## metabo® POWER mobile workshop compressors

IP 54 degree of protection, for flexible use in interior construction and on construction sites

### Execution:

- For single-phase alternating current
- Oil-free piston compressor
- Pressure reducer with manometer for controllable working pressure
- Instrument panel with easily legible manometers for tank and operating pressure
- Cord wrap facility

#### Ident. No. 022, 250:

- Rubberised, robust wheels and handle for mobile applications
- Lifting eye for secure transport on construction sites

### Advantage:

- Push button with starter valve for reliable cold start
- Reduced service costs
- Ident. No. 022: Fastening and transport option for MetaLoc and other commercially available case systems

### Delivery:

Ident. No. 022, 250: 2 universal quick-release couplings

Ident. No. 100: Universal quick-release coupling



Ident. No. 100



Ident. No. 022

Model	Power 180-5 W OF	Power 250-10 W OF	Power 400-20 W OF
Working pressure (bar)	8	10	10
Intake air capacity (l/min)	160	220	330
Delivery quantity effective at 80% max. pressure (l/min)	75	140	185
Filling capacity (l/min)	90	120	200
Tank capacity (l)	5	10	20
Power input (kW)	1.1	1.5	2.2
Max. rotation speed (U/min(rpm))	2850	2850	2850
Length x width x height	370 x 395 x 286 mm	470 x 480 x 348 mm	580 x 600 x 500 mm
With overload protection	Yes	Yes	Yes
Weight (kg)	16	21	47
75290...	Ident. No. 100	Ident. No. 250	Ident. No. 022

Prod. Gr. 745