

**Work tables****With option of beech multiplex panel or solid beech plate, 40 mm thick****Execution:**

- Base made of sturdy U-profile steel 80 x 50 x 2 mm, height x depth 800 x 630 mm, incl. cross strut between bases
- Delivered as individual parts, unassembled

Notes:

Ident. No. 020: Transparent soft PVC mats for protecting work surfaces, see no. 50233 905-930.

Ident. No. 021-025: Transparent soft PVC mats for protecting work surfaces, see no. 50233 905-930

Technical data:

- Panel depth: 750 mm
- Board thickness: 40 mm
- Working height: 840 mm
- Load-carrying capacity: 800 kg
- Material of the frame: Steel plate
- Adjustable in height: No
- Levelling: No
- Surface: Powder-coated



Material of the worktop			Multiplex beech	Multiplex beech	Solid beech	Solid beech
Plate length (mm)			1500	2000	1500	2000
Colour						
50 185...	Light grey RAL 7035	Ident. No.	020 ○	024 ○	021 ○	025 ○

Prod. Gr. 586

**Workbenches, height-adjustable through grating in the base****With option of beech multiplex panel or solid beech plate, 40 mm thick****Execution:**

- Base made of sturdy U-profile steel 80 x 50 x 2 mm, height x depth 800 x 630 mm, incl. cross strut between bases
- Working height adjustable via notches in the base in increments of 25 mm, from approx. 640-990 mm
- Delivered as individual parts, unassembled

Advantage:

- The workbench can be adjusted to the desired working height
- For perfect ergonomics in the workplace

Notes:

Transparent soft PVC mats for protecting work surfaces, see no. 50233 905-930.

Technical data:

- Panel depth: 750 mm
- Board thickness: 40 mm
- Min. height: 640 mm
- Max. height: 990 mm
- Load-carrying capacity: 800 kg
- Material of the frame: Steel plate
- Adjustable in height: Yes
- Levelling: No
- Surface: Powder-coated



Material of the worktop			Multiplex beech	Multiplex beech	Solid beech	Solid beech
Plate length (mm)			1500	2000	1500	2000
Colour						
50 185...	Light grey RAL 7035	Ident. No.	050 ○	052 ○	054 ○	056 ○

Prod. Gr. 586

**Workbench series L 1500, with lowerable transport wheels****With beech multiplex panel, 40 mm thick****Application:**

The mobile workstation with versatile options for use.

Execution:

- Storage tray with four-sided anti-roll-off edging, W x D 1275 x 638 mm

Advantage:

- Can be lifted, lowered and moved in all directions by simply moving the lever on the workbench
- In lowered state absolutely tilt-proof on four feet

Notes:

Transparent soft PVC mats for protecting work surfaces, see no. 50233 915.

Technical data:

- Material of the worktop: Multiplex beech
- Plate length: 1500 mm
- Panel depth: 750 mm
- Board thickness: 40 mm
- Working height: 840 mm
- On castors: Yes
- Moving device, can be lowered: Yes
- With sliding handle: No
- Load-carrying capacity: 800 kg
- Dynamic load-carrying capacity: 400 kg
- Number of fixed rollers: 2 PCS
- Number of steering rollers: 2 PCS
- With wheel lock: No
- Material of the wheel: Polyamide
- Wheel diameter: 80 mm
- Material: Sheet steel
- Surface: Powder-coated



Transport wheels can be lowered

Body colour			
Light grey RAL 7035			
50 199...	Ident. No.	003 ○	

Prod. Gr. 586



Workbench drawer blocks, height 410 mm, width 570 mm

Drawers with option of partial or full extension

Application:

For the individual assembly of a workbench with workbench panel and base.

Execution:

- Solidly welded steel sheet construction
- Drawers with high-quality Delrin rollers
- Central locking with rotary cylinder security lock, incl. 2 keys
- Suitable insert material for drawers, see from no. 50485 060-265 and from no. 50537 610-695
- Other equipment options available at extra cost: SOFT-CLOSE for drawers, see no. 50392 005, ELECTRONIC CODE combination lock, see no. 50392 010

Notes:

To order customised hard foam inserts suitable for these drawers, please use the following clear internal dimensions: Width 435 mm, depth 585 mm.

Technical data:

- With single pull-out safety brake: Yes
- Drawer surface: 0.27 m²
- Drawer with slots: Yes
- Perforated drawer base: Yes
- Central locking: Yes
- Lock type: DOM® locking system
- Material: Sheet steel
- Surface: Powder-coated

FH mm	KH mm
150	100
180	100



FH mm	KH mm
90	70
120	100
120	100



Ident. No. 511-513

Number of drawers (PCS)	2	3	3
Drawer front height	1 x 150 mm 1 x 180 mm	1 x 90 mm 2 x 120 mm	1 x 90 mm 2 x 120 mm
Pullout type	Full extension	Partial extension	Full extension
Load-carrying capacity per drawer (kg)	70	100	70
Draw width (inner dimension) (mm)	450	450	450
Drawer depth (inner dimension) (mm)	600	600	600
Height (mm)	410	410	410
Width (mm)	570	570	570
Depth (mm)	680	680	680
	Body colour	Colour of front	
50211...	Light grey RAL 7035	Anthracite grey RAL 7016	Ident. No.
			503 ○
			511 ○
			513 ○

Prod. Gr. 5BC

MORE THAN 60,000 PRODUCTS
FOR MAXIMUM INNOVATION.

WE HAVE WHAT IT TAKES.

For a complete range of products that meet the toughest demands, visit www.iconridge.com



Work tables

With different types of plates, 50 mm thick

Design:

- Worktop length 800, 1270, 1500, 2000, 2800 and 4050 mm, depth x thickness 700 x 50 mm
- Working height 850 mm or 900 mm

- Deliverable worktop designs: with ANKE solid beech workbench top panel (BMP), universal workbench top panel (UBP), with 2 mm ABS edge, with sheet zinc worktop (ZBP) 1.5 mm
- Base made of square steel tube 45 x 45 x 2 mm, with level compensation
- Total load capacity 800 kg with evenly distributed load

Delivery: fully assembled

Ident. No. 503



Workbench 800 mm



Workbench 1270/1500 mm



Workbench 2000 mm

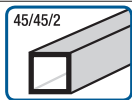


Workbench 2800 mm

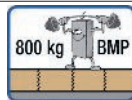


Workbench 4050 mm

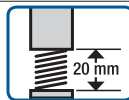
Standard features:



Base made of square steel tube
45 x 45 x 2 mm



Max. workbench load capacity



1x level compensation in lengths
800/1270/1500/2000 mm,
6x in length 2800 mm,
8x in length 4050 mm



Fully assembled

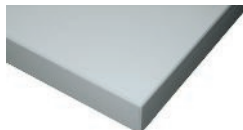


Optionally available in 3 panel versions:



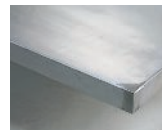
Solid beech (BMP)

Solid, sandable, bonded strips, special toothed and bonding, therefore extremely robust and almost unlimited service life.



Panel with universal coating (UBP)

Wooden base panel with grey-blue, antistatic and abrasion-resistant coating, continuous 2 mm ABS edge. Resistant short-term to weak acids, alkalis and heat of up to approx. 250°C. Resistant long-term to greases and oils.



Worktop with sheet zinc coating (ZBP)

Wooden base panel with 1.5 mm, galvanised sheet steel coating, flanged on all sides and fastened on the base. Corners are welded and ground. Ideal for working with oil. Hot-dip galvanised for long-lasting corrosion resistance.



Optional transport wheels

for work tables up to top panel length 2000 mm. Transport wheels consists of a frame incl. cross-bracing with 2 fixed rollers and 2 steering rollers made of polyamide, dia. 125 mm. The load capacity of workbenches on transport wheels is 600 kg with evenly distributed load, minus the tare weight

Choose your preferred colour (no extra charge) for products with this logo:



RAL 1015

light ivory

RAL 2004

pure orange

RAL 3002

carmine red

RAL 3020

traffic red

RAL 5010

gentian blue

RAL 5012

light blue

RAL 5014

pigeon blue

RAL 5015

sky blue

RAL 6011

reseda green

RAL 7035

light grey

RAL 9010

pure white

Colours may be subject to printing-related differences; the original colours according to RAL are definitive.

Series 1500 workbenches

Different types of panels, 50 mm thick

Execution:

- Base made of square-section steel tube 45 x 45 x 2 mm, with level compensation
- Delivered fully assembled

Technical data:

- Plate length: 1500 mm
- Panel depth: 700 mm
- Board thickness: 50 mm
- Load-carrying capacity: 800 kg
- Material of the frame: Steel plate
- Adjustable in height: No
- Levelling: Yes
- Surface: Powder-coated



Workbench 1500 mm

Material of the worktop			Solid beech	Solid beech	Universal covering	Universal covering	Zinc sheet covering	Zinc sheet covering
Working height (mm)			850	900	850	900	850	900
Colour								
50185...	Light grey RAL 7035	Ident. No.	140	145	241	246	341	346
			o	o	o	o	o	o

Prod. Gr. 502

For colours deliverable without a surcharge, see page 1731

Series 2000 workbenches

Different types of panels, 50 mm thick

Execution:

- Base made of square-section steel tube 45 x 45 x 2 mm, with level compensation
- Delivered fully assembled

Technical data:

- Plate length: 2000 mm
- Panel depth: 700 mm
- Board thickness: 50 mm
- Load-carrying capacity: 800 kg
- Material of the frame: Steel plate
- Adjustable in height: No
- Levelling: Yes
- Surface: Powder-coated



Workbench 2000 mm

Material of the worktop			Solid beech	Solid beech	Universal covering	Universal covering	Zinc sheet covering	Zinc sheet covering
Working height (mm)			850	900	850	900	850	900
Colour								
50185...	Light grey RAL 7035	Ident. No.	160	165	261	266	361	366
			o	o	o	o	o	o

Prod. Gr. 502

For colours deliverable without a surcharge, see page 1731

power strips for workbenches

version:

housing made of sheet steel, height 170 mm, depth 90 mm, length 800-4050 mm. for fitting with components according to illustration.



delivery:

- unwired
- for length 2800 mm: two-piece; for length 4050 mm: three-piece

- illuminated one/off switch 2-pin
- Schuko socket with cap 2-pin + E 10/16 A 230 V 50 Hz
- CEE socket 16 A 400 V/50 Hz with cap 5-pin
- circuit breaker 1-pin B 16 A
- circuit breaker 3-pin C 16 A
- screw fuse element Neozed 3-pin without fuse
- fault current circuit breaker (FI) 25 A 30 mA 230 V
- fault current circuit breaker (FI) 25 A 30 mA 400 V
- emergency stop button without key
- emergency stop button with key
- pole terminal 4 mm black
- earthing socket yellow/green 4 mm
- earthing socket 4 mm red
- compressed air quick-release coupling

individual fitting of power strip on request.

technical hotline +49 (0)800 9813-193

**Workbenches, height-adjustable through grating in the base****With option of beech multiplex panel or solid beech plate, 40 mm thick****Execution:**

- Base made of sturdy U-profile steel 80 x 50 x 2 mm, height x depth 800 x 630 mm, incl. cross strut between bases
- Working height adjustable via notches in the base in increments of 25 mm, from approx. 640-990 mm
- Delivered as individual parts, unassembled

Advantage:

- The workbench can be adjusted to the desired working height
- For perfect ergonomics in the workplace

Notes:

Transparent soft PVC mats for protecting work surfaces, see no. 50233 905-930.

Technical data:

- Panel depth: 750 mm
- Board thickness: 40 mm
- Min. height: 640 mm
- Max. height: 990 mm
- Load-carrying capacity: 800 kg
- Material of the frame: Steel plate
- Adjustable in height: Yes
- Levelling: No
- Surface: Powder-coated



Material of the worktop			Multiplex beech	Multiplex beech	Solid beech	Solid beech
Plate length (mm)			1500	2000	1500	2000
	Colour	Ident. No.				
50185...	Light grey RAL 7035		050	052	054	056
			○	○	○	○

Prod. Gr. 586

**Ergonomic workbenches, height-adjustable with a hand crank****With solid beech panel, 50 mm thick****Application:**

For standing activities.

Execution:

- Base made of square steel tube, outer 60 x 60 x 2 mm, inner 55 x 55 x 2 mm, central horizontal strut, with level compensation on all four feet
- Height infinitely adjustable from approx. 740-1040 mm using a crank handle (removable) or using a cordless screwdriver (with hexagon socket)
- Bevel gears with hardened steel gear wheels
- Gear housing made of fibreglass-reinforced plastic
- Fully assembled incl. crank handle

Advantage:

- The workbench can quickly and easily be adjusted to the desired working height
- For perfect ergonomics in the workplace

Notes:

Transparent soft PVC mats for protecting work surfaces, see no. 50233 905-930

Technical data:

- Material of the worktop: Solid beech
- Panel depth: 700 mm
- Board thickness: 50 mm
- Min. height: 740 mm
- Max. height: 1040 mm
- Load-carrying capacity: 800 kg
- Dynamic load-carrying capacity: 400 kg
- Material of the frame: Steel plate
- Adjustable in height: Yes
- Levelling: Yes
- Surface: Powder-coated



Ident. No. 008
Manually height adjustable



Height adjustable via crank



Adjustable with a cordless screwdriver (with hexagon socket head) – not included in delivery

Plate length (mm)			1500	2000
	Colour	Ident. No.		
50185...	Light grey RAL 7035		002	008
			○	○

Prod. Gr. 5BC

Ergonomic workbenches, electric height adjustment

With solid beech panel, 50 mm thick

Application:

For standing activities.

Execution:

- Base made of square steel tube, outer 60 x 60 x 2 mm, inner 55 x 55 x 2 mm, central horizontal strut, with level compensation on all four feet
- Height infinitely adjustable from approx. 740-1040 mm via an electric control panel
- Bevel gears with hardened steel gear wheels
- Gear housing made of die-cast zinc
- One perforated metal panel wall on both the right and left end faces of the workbench
- Delivered fully assembled

Advantage:

- The workbench can quickly and easily be adjusted to the desired working height
- For perfect ergonomics in the workplace

- Up to 4 different work heights are programmable and accessible at the touch of a button thanks to the memory function

Notes:

Transparent soft PVC mats for protecting work surfaces, see no. 50233 905-930

Technical data:

- Material of the worktop: Solid beech
- Panel depth: 700 mm
- Board thickness: 50 mm
- Min. height: 740 mm
- Max. height: 1040 mm
- Load-carrying capacity: 800 kg
- Dynamic load-carrying capacity: 400 kg
- Material of the frame: Steel plate
- Adjustable in height: Yes
- Levelling: Yes
- Surface: Powder-coated



Electrical height adjustment



Control panel for electrical height adjustment

Plate length (mm)			1500	2000
	Colour			
50185...	Light grey RAL 7035	Ident. No.	012 ○	016 ○

Prod. Gr. 5BC

Heavy-duty table, electric height adjustment

With beech multiplex panel, 50 mm thick – dynamic load capacity of up to 2000 kg



Execution:

- fully welded tubular steel frame with bolted stabilisation panels
- height-adjustable via 4 electric motors, coupled via electronic control unit, 370 mm stroke, controlled via keypad
- front sides with cover, incl. 10 x 10 mm square perforation, 38 mm grid spacing
- table top protrudes over base frame by 80 mm along each long side and by 62 mm along each short side
- square base plates, 140 x 140 mm, with perforation for ground anchoring
- storage trays 640 mm deep, load capacity 100 kg
- multiplex beech worktop, 50 mm thick, oiled surface
- electrical connected load: 230 V/720 watts
- equipped with emergency stop switch and 3 CEE 7/4 sockets (front right)

Advantage:

- dynamically loadable up to 2000 kg!
- table can be quickly and easily adjusted to the desired working height
- For perfect ergonomics in the workplace

Notes:

For optional accessories such as workbench set-ups with perforated metal plate rear panels, workstation lighting, swivel arm elements and open bins for the ergonomic provision of tools and materials, see from no. 50202206-256, drawer block for table deliverable on request. Looking for a customised heavy-duty table to suit your requirements? Contact us.

Technical data:

- Material of the worktop: Multiplex beech
- Panel depth: 800 mm
- Board thickness: 50 mm
- Min. height: 710 mm
- Max. height: 1080 mm
- Dynamic load-carrying capacity: 2000 kg
- Material of the frame: Steel plate
- Adjustable in height: Yes
- Surface: Powder-coated

Plate length (mm)			1685	2030
	Colour	Frame colour		
50202...	Optional	Selectable	103 ○	105 ○

Prod. Gr. 5BC



Combination workbenches WGS series

With solid beech top panel, 50 mm thick

Design:

- Workbench top panel solid beech (BMP)
- Worktop panel length 1500 and 2000 mm, depth x thickness 700 x 50 mm, working height 850 mm
- Robustly welded sheet steel construction, undercounter cabinet with drawer block, base made of square steel tube 45 x 45 x 2 mm, with level compensation

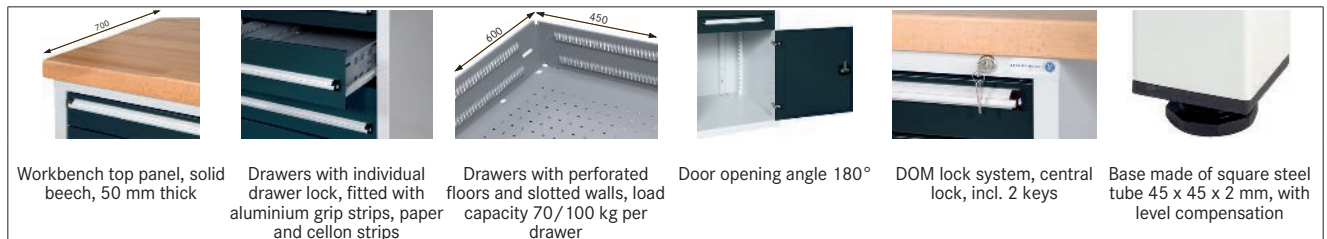


- Total load capacity 800 kg with evenly distributed load
- Other designs available on request.
- Note:**
- Workbenches can also be individually designed according to your requirements. The individual components such as bases, undercounter cabinets, drawer blocks and workbench top panels can be found in the chapter on workbench components from no. 50232 317



Drawers with full extension

Standard features:



Choose your preferred colour (no extra charge) for products with this logo:



RAL 1007 daffodil yellow	RAL 1015 light ivory	RAL 1028 melon yellow	RAL 2004 pure orange	RAL 3002 carmine red	RAL 3020 traffic red	RAL 5005 signal blue	RAL 5010 gentian blue
RAL 5012 light blue	RAL 5014 pigeon blue	RAL 5015 sky blue	RAL 6011 reseda green	RAL 6018 yellow green	RAL 7016 anthracite grey	RAL 7021 black grey	RAL 7023 concrete grey
RAL 7032 pebble grey	RAL 7035 light grey	RAL 7038 agate grey	RAL 7042 traffic grey	RAL 8019 grey brown	RAL 9005 jet black	RAL 9006 white aluminium	RAL 9010 pure white

Colours may be subject to printing-related differences; the original colours according to RAL are definitive.

WGS series workbenches with undercounter cabinet

5 drawers with option of partial or full extension

Execution:

- Solidly welded steel sheet construction
- Left: Undercounter cabinet with drawers
- Right: Base made of square-section steel tube 40 x 40 x 2 mm, with level compensation
- Delivered fully assembled

Technical data:

- Material of the worktop: Solid beech
- Panel depth: 700 mm
- Board thickness: 50 mm
- Working height: 850 mm
- Number of drawers: 5 PCS

- Drawer front height: 1 x 90 mm | 1 x 120 mm | 1 x 150 mm | 2 x 180 mm
- Draw width (inner dimension): 450 mm
- Drawer depth (inner dimension): 600 mm
- Drawer surface: 0.27 m²
- Base frame material: Steel plate
- With single pull-out safety brake: Yes
- Adjustable in height: No
- Levelling: Yes
- Load-carrying capacity: 800 kg
- Central locking: Yes
- Lock type: DOM® locking system
- Surface: Powder-coated



Plate length (mm)				1500	1500	2000	2000
Pullout type				Partial extension	Full extension	Partial extension	Full extension
Load-carrying capacity per drawer (kg)				100	70	100	70
50212...	Body colour	Colour of front	Ident. No.				
	Light grey RAL 7035	Anthracite grey RAL 7016		006	008	106	108

Prod. Gr. 5BC

Source: Hahn+Kolb Werkzeuge GmbH
Technical data subject to change.
Availability subject to country specific rules and regulations.

www.iconridge.com

**WGS series workbenches with undercounter cabinet****6 drawers with option of partial or full extension****Execution:**

- Solidly welded steel sheet construction
- Left: Undercounter cabinet with drawers
- Right: Base made of square-section steel tube 40 x 40 x 2 mm, with level compensation
- Delivered fully assembled

- Drawer front height: 2 x 90 mm | 2 x 120 mm | 2 x 150 mm
- Draw width (inner dimension): 450 mm
- Drawer depth (inner dimension): 600 mm
- Drawer surface: 0.27 m²
- Base frame material: Steel plate
- With single pull-out safety brake: Yes
- Adjustable in height: No
- Levelling: Yes
- Load-carrying capacity: 800 kg
- Central locking: Yes
- Lock type: DOM® locking system
- Surface: Powder-coated

**Technical data:**

- Material of the worktop: Solid beech
- Panel depth: 700 mm
- Board thickness: 50 mm
- Working height: 850 mm
- Number of drawers: 6 PCS

Plate length (mm)				1500	1500	2000
Pullout type				Partial extension	Full extension	Partial extension
Load-carrying capacity per drawer (kg)				100	70	100
	Body colour	Colour of front				
50212...	Light grey RAL 7035	Anthracite grey RAL 7016	Ident. No.	016 ○	018 ○	116 ○

Plate length (mm)				2000
Pullout type				Full extension
Load-carrying capacity per drawer (kg)				70
	Body colour	Colour of front		
50212...	Light grey RAL 7035	Anthracite grey RAL 7016	Ident. No.	118 ○

Prod. Gr. 5BC

**WGS series workbenches with undercounter cabinet****8 drawers with option of partial or full extension****Execution:**

- Solidly welded steel sheet construction
- Left: Undercounter cabinet with drawers
- Right: Base made of square-section steel tube 40 x 40 x 2 mm, with level compensation
- Delivered fully assembled

- Drawer front height: 2 x 60 mm | 4 x 90 mm | 2 x 120 mm
- Draw width (inner dimension): 450 mm
- Drawer depth (inner dimension): 600 mm
- Drawer surface: 0.27 m²
- Base frame material: Steel plate
- With single pull-out safety brake: Yes
- Adjustable in height: No
- Levelling: Yes
- Load-carrying capacity: 800 kg
- Central locking: Yes
- Lock type: DOM® locking system
- Surface: Powder-coated

**Technical data:**

- Material of the worktop: Solid beech
- Panel depth: 700 mm
- Board thickness: 50 mm
- Working height: 850 mm
- Number of drawers: 8 PCS

Plate length (mm)				1500	1500	2000
Pullout type				Partial extension	Full extension	Partial extension
Load-carrying capacity per drawer (kg)				100	70	100
	Body colour	Colour of front				
50212...	Light grey RAL 7035	Anthracite grey RAL 7016	Ident. No.	026 ○	028 ○	126 ○

Plate length (mm)				2000
Pullout type				Full extension
Load-carrying capacity per drawer (kg)				70
	Body colour	Colour of front		
50212...	Light grey RAL 7035	Anthracite grey RAL 7016	Ident. No.	128 ○

Prod. Gr. 5BC



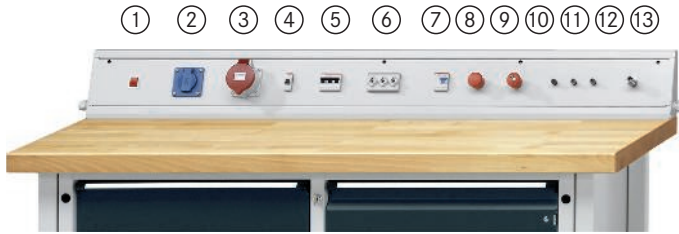
power strips for workbenches

version:

housing made of sheet steel, height 170 mm, depth 90 mm, length 800-4050 mm. for fitting with components according to illustration.

delivery:

- unwired
- for length 2800 mm: two-piece; for length 4050 mm: three-piece



- ① illuminated one/off switch 2-pin
- ② Schuko socket with cap 2-pin + E 10/16 A 230 V 50 Hz
- ③ CEE socket 16 A 400 V/50 Hz with cap 5-pin
- ④ circuit breaker 1-pin B 16 A
- ⑤ circuit breaker 3-pin C 16 A
- ⑥ screw fuse element Neozed 3-pin without fuse
- ⑦ fault current circuit breaker (FI) 25 A 30 mA 230 V
- ⑦ fault current circuit breaker (FI) 25 A 30 mA 400 V
- ⑧ emergency stop button without key
- ⑨ emergency stop button with key
- ⑩ pole terminal 4 mm black
- ⑪ earthing socket yellow/green 4 mm
- ⑫ earthing socket 4 mm red
- ⑬ compressed air quick-release coupling

individual fitting of power strip on request.

technical hotline +49 (0)800 9813-193



Soft PVC support, transparent For protecting work surfaces

Application:

Protects the work surface from soiling and damage.

Execution:

- Free from DOP, cadmium and silicone
- Fire protection class B2 in line with DIN 4102

Notes:

Custom-cut and on-the-roll products up to max. 20 m available upon request

Technical data:

- Colour: Transparent
- Min. temperature resistance: -30 °C
- Max. temperature resistance: 60 °C



Length (mm)		1500	2000	1500	2000	1500	2000
Depth (mm)		700	700	750	750	800	800
Total thickness (mm)		3	3	3	3	3	3
50233...	Ident. No.	905	910	915	920	928	930
		●	●	●	●	●	●

Prod. Gr. 504

Assortment of fittings for drawers

For HK WGS and WG series combi workbenches

Application:

For customised fitting and partitioning of individual drawers.

Execution:

- Suitable for internal drawer dimensions: Width x depth 450 x 600 mm
- **Ident. No. 210:** Oil-resistant
- **Ident. No. 250–265:** with textured mat and boxes



Ident. No. 060
① Trough plates



Ident. No. 090
② Container



Ident. No. 095–100
③ Spare part boxes



Ident. No. 110–130
④ Compartment divisions



Ident. No. 200
⑤ Anti-slip mat



Ident. No. 210
⑥ Ribbed rubber mat



Ident. No. 250
⑦ AQUARADO set with textured mat and 10 boxes, 24/48 mm high (without tools)



Ident. No. 260
⑧ AQUARADO set with textured mat and 7 boxes, 48 mm high (without tools)



Ident. No. 265
⑩ AQUARADO set with textured mat and 14 boxes, 24 mm high (without tools)

For drawer cabinet height (mm)			40	70	100
	50485...	① Trough trays	Ident. No. 060	-	-
	50485...	② Containers	Ident. No. 090	-	-
	50485...	③ Spare part boxes	Ident. No. 095	100	-
	50485...	④ Compartment dividers	Ident. No. 110	120	130
	50485...	⑤ Non-slip mat	Ident. No. 200	-	-
	50485...	⑥ Ribbed rubber mat	Ident. No. 210	-	-
	50485...	⑦ Set with textured mat and 10 boxes	Ident. No. -	250	-
	50485...	⑧ Set with textured mat and 7 boxes	Ident. No. -	260	-
	50485...	⑩ Set with textured mat and 14 boxes	Ident. No. 265	-	-

HK = Prod. Gr. 503
AQUARADO = Prod. Gr. 581



Hard foam insert

A perfectly organised workplace increases productivity and safety in every process. For optimal performance, this perfect organisation must be maintained down to the last detail. Hard foam inserts can help: Already equipped with high-quality tools or individually planned, the inserts maintain order down to the tiniest screw. High-quality materials and the latest technology allow detailed outlines and a wide range of different cavities to be cut – always near to the surface for easy removal. Each part has its dedicated space. Hard foam inserts also secure the contents during storage and transport. The two-tone material lets you see at a glance if an item is missing.

A strong material



PE-foam is lightweight yet resilient.



Furthermore it is oil-resistant and water-resistant.



It also has shock-absorbing properties.



The hard foam is durable, odour-free and even suitable for use with foodstuffs.



ESD foam is available for electronic parts.

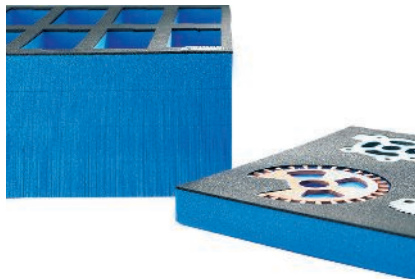


Use the laser engraver to add your personal signature and give the hard foam insert an individual finish.

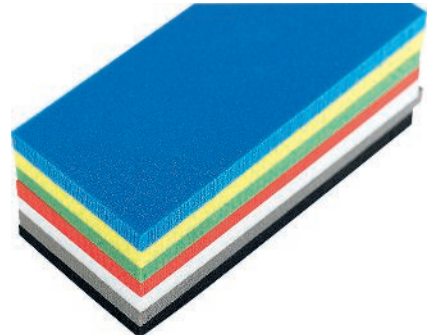
Versatile applications – many possibilities



The largest available hard foam insert is 1500 mm long and 1000 mm wide. Almost all dimensions and shapes smaller than this are possible.



Standard versions of the material are 30 mm, 60 mm or 90 mm thick. Individual versions are possible with smaller and larger thicknesses up to a maximum of 210 mm.



There are many colour options available. The black surface layer can be combined with the following contrasting colours: Standard blue, as well as the optional colours red, green, yellow, white or grey.



V-series combination workbenches – drawers with 100% full extension with different types of plates, 50 mm thick

version:

- workbench top panel optionally solid beech (BMP) with universal coating (UBP) or zinc sheet metal coating (ZBP)
- worktop panel length 1500, 2000, 2800 and 4050 mm, depth x thickness 700 x 50 mm, working height 850 mm and 900 mm
- robustly welded sheet steel construction, undercounter cabinet with drawer block, base made of square steel tube 45 x 45 x 2 mm, with level compensation
- total load capacity 800 kg with evenly distributed load

other designs available on request.

note: on request, all workbenches are also available also with 86% standard-extension drawers and 100 kg load capacity. price on request.



series V 1500



series V 2800



series V 2000



series V 4050

standard features:

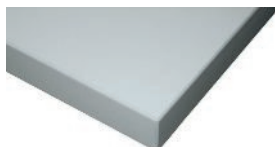
drawers with 100% full extension	load capacity 100 kg per drawer	individual drawerlock: only one drawer can be opened at a time	drawers with perforated floors and slotted walls for individual partition	aluminium handle strips with inscription tapes and PVC protective profile	base made of square steel tube 45 x 45 x 2 mm	level compensation min. 1 x to max. 20 mm	central lock, incl. 2 keys	

optionally available in 3 panel versions:



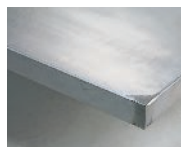
solid beech (BMP)

solid, sandable, bonded strips, special toothing and bonding, therefore extremely robust and almost unlimited service life.



panel with universal coating (UBP)

wooden base panel with grey-blue, antistatic and abrasion-resistant coating, continuous 2 mm ABS edge. resistant short-term to weak acids, alkalis and heat of up to approx. 250°C. Resistant long-term to greases and oils.



worktop with sheet zinc coating (ZBP)

wooden base panel with 1.5 mm, galvanised sheet steel coating, flanged on all sides and fastened on the base. corners are welded and ground. ideal for working with oil. hot-dip galvanised for long-lasting corrosion resistance.



all drawers with 100% full extension – for easy and comfortable access.

choose your preferred colour (no extra charge) for products with this logo:



RAL 1015	RAL 2004	RAL 3002	RAL 3020	RAL 5010	RAL 5012	RAL 5014	RAL 5015	RAL 6011	RAL 7035	RAL 9010
light ivory	pure orange	carmin red	traffic red	gentian blue	light blue	pigeon blue	sky blue	reseda green	light grey	pure white

colours may be subject to printing-related differences; the original colours according to RAL are definitive.

**V 1500 series combination workbenches****With 2 drawers, 100% full extension****Execution:**

- Solidly welded steel sheet construction
- Base with drawer block
- Base made of square-section steel tube 45 x 45 x 2 mm, with level compensation
- Delivered fully assembled

Notes:

To order customised hard foam inserts, please use the following clear internal dimensions: W x D: 490 mm x 530 mm.

Technical data:

- Plate length: 1500 mm
- Panel depth: 700 mm

- Board thickness: 50 mm
- Number of drawers: 2 PCS
- Drawer front height: 1 x 90 mm | 1 x 180 mm
- Draw width (inner dimension): 500 mm
- Drawer depth (inner dimension): 540 mm
- Pullout type: Full extension
- Load-carrying capacity per drawer: 100 kg
- Drawer surface: 0.27 m²
- Base frame material: Steel plate
- With single pull-out safety brake: Yes
- Adjustable in height: No
- Levelling: Yes
- Load-carrying capacity: 800 kg
- Central locking: Yes
- Lock type: DOM® locking system
- Surface: Powder-coated



Material of the worktop				Solid beech	Solid beech	Universal covering	Universal covering	Zinc sheet covering	Zinc sheet covering
Working height (mm)				850	900	850	900	850	900
	Body colour	Colour of front	Ident. No.						
50303...	Light grey RAL 7035	Anthracite grey RAL 7016		002	004	006	008	010	012
				○	○	○	○	○	○

Prod. Gr. 502

**V 1500 series combination workbenches****With 3 drawers, 100% full extension****Execution:**

- Solidly welded steel sheet construction
- Base with drawer block
- Base made of square-section steel tube 45 x 45 x 2 mm, with level compensation
- Delivered fully assembled

Notes:

To order customised hard foam inserts, please use the following clear internal dimensions: W x D: 490 mm x 530 mm.

Technical data:

- Plate length: 1500 mm
- Panel depth: 700 mm

- Board thickness: 50 mm
- Number of drawers: 3 PCS
- Drawer front height: 3 x 180 mm
- Draw width (inner dimension): 500 mm
- Drawer depth (inner dimension): 540 mm
- Pullout type: Full extension
- Load-carrying capacity per drawer: 100 kg
- Drawer surface: 0.27 m²
- Base frame material: Steel plate
- With single pull-out safety brake: Yes
- Adjustable in height: No
- Levelling: Yes
- Load-carrying capacity: 800 kg
- Central locking: Yes
- Lock type: DOM® locking system
- Surface: Powder-coated



Material of the worktop				Solid beech	Solid beech	Universal covering	Universal covering	Zinc sheet covering	Zinc sheet covering
Working height (mm)				850	900	850	900	850	900
	Body colour	Colour of front	Ident. No.						
50303...	Light grey RAL 7035	Anthracite grey RAL 7016		038	040	042	044	046	048
				○	○	○	○	○	○

Prod. Gr. 502

**V 2000 series combination workbenches****With 2 drawers, 100% full extension****Execution:**

- Solidly welded steel sheet construction
- Base with drawer block
- Base made of square-section steel tube 45 x 45 x 2 mm, with level compensation
- Delivered fully assembled

Notes:

To order customised hard foam inserts, please use the following clear internal dimensions: W x D: 490 mm x 530 mm.

Technical data:

- Plate length: 2000 mm
- Panel depth: 700 mm

- Board thickness: 50 mm
- Number of drawers: 2 PCS
- Drawer front height: 1 x 90 mm | 1 x 180 mm
- Draw width (inner dimension): 500 mm
- Drawer depth (inner dimension): 540 mm
- Pullout type: Full extension
- Load-carrying capacity per drawer: 100 kg
- Drawer surface: 0.27 m²
- Base frame material: Steel plate
- With single pull-out safety brake: Yes
- Adjustable in height: No
- Levelling: Yes
- Load-carrying capacity: 800 kg
- Central locking: Yes
- Lock type: DOM® locking system
- Surface: Powder-coated



Material of the worktop				Solid beech	Solid beech	Universal covering	Universal covering	Zinc sheet covering	Zinc sheet covering
Working height (mm)				850	900	850	900	850	900
	Body colour	Colour of front	Ident. No.						
50303...	Light grey RAL 7035	Anthracite grey RAL 7016		222	224	226	228	230	232
				○	○	○	○	○	○

Prod. Gr. 502

ANKE V 2000 series combination workbenches

With 3 drawers, 100% full extension

Execution:

- Solidly welded steel sheet construction
- Base with drawer block
- Base made of square-section steel tube 45 x 45 x 2 mm, with level compensation
- Delivered fully assembled

Notes:

To order customised hard foam inserts, please use the following clear internal dimensions: W x D: 490 mm x 530 mm.

Technical data:

- Plate length: 2000 mm
- Panel depth: 700 mm
- Board thickness: 50 mm
- Number of drawers: 3 PCS
- Drawer front height: 3 x 180 mm
- Draw width (inner dimension): 500 mm
- Drawer depth (inner dimension): 540 mm
- Pullout type: Full extension
- Load-carrying capacity per drawer: 100 kg
- Drawer surface: 0.27 m²
- Base frame material: Steel plate
- With single pull-out safety brake: Yes
- Adjustable in height: No
- Levelling: Yes
- Load-carrying capacity: 800 kg
- Central locking: Yes
- Lock type: DOM® locking system
- Surface: Powder-coated



Material of the worktop				Solid beech	Solid beech	Universal covering	Universal covering	Zinc sheet covering	Zinc sheet covering
Working height (mm)				850	900	850	900	850	900
	Body colour	Colour of front							
50303...	Light grey RAL 7035	Anthracite grey RAL 7016	Ident. No.	258 ○	260 ○	262 ○	264 ○	266 ○	268 ○

Prod. Gr. 502



power strips for workbenches

version:

housing made of sheet steel, height 170 mm, depth 90 mm, length 800-4050 mm. for fitting with components according to illustration.

delivery:

- unwired
- for length 2800 mm: two-piece; for length 4050 mm: three-piece



- ① illuminated one/off switch 2-pin
- ② Schuko socket with cap 2-pin + E 10/16 A 230 V 50 Hz
- ③ CEE socket 16 A 400 V/50 Hz with cap 5-pin
- ④ circuit breaker 1-pin B 16 A
- ⑤ circuit breaker 3-pin C 16 A
- ⑥ screw fuse element Neozed 3-pin without fuse
- ⑦ fault current circuit breaker (FI) 25 A 30 mA 230 V
- ⑧ fault current circuit breaker (FI) 25 A 30 mA 400 V
- ⑨ emergency stop button without key
- ⑩ emergency stop button with key
- ⑪ pole terminal 4 mm black
- ⑫ earthing socket yellow/green 4 mm
- ⑬ earthing socket 4 mm red
- ⑭ compressed air quick-release coupling

individual fitting of power strip on request.

technical hotline +49 (0)800 9813-193

ANKE Drawer insert materials for ANKE V series combination workbenches

Compartment dividers and compartment rails made from sheet steel

Application:

For inserting in drawers of ANKE workbenches series V.

Execution:

- Made of sheet steel



Ident. No. 724-730
1/2 division



Ident. No. 749-755
1/3 division



Ident. No. 774-780
1/4 division



Ident. No. 799-805
1/2-1/4 division

		For drawer front height (mm)	For min./max. drawer front height	Number of compartments (PCS)		
50228...	1/2 split	60		8	Ident. No.	724 ○
50228...	1/3 split	60		12	Ident. No.	749 ○
50228...	1/4 split	60		16	Ident. No.	774 ○
50228...	1/2-1/4 split	60		12	Ident. No.	799 ○
50228...	1/2 split		90-150 mm	8	Ident. No.	725 ○
50228...	1/3 split		90-150 mm	12	Ident. No.	750 ○

		For drawer front height (mm)	For min./max. drawer front height	Number of compartments (PCS)		
50228...	1/4 split		90-150 mm	16	Ident. No.	775 ○
50228...	1/2-1/4 split		90-150 mm	12	Ident. No.	800 ○
50228...	1/2 split		180-360 mm	8	Ident. No.	730 ○
50228...	1/3 split		180-360 mm	12	Ident. No.	755 ○
50228...	1/4 split		180-360 mm	16	Ident. No.	780 ○
50228...	1/2-1/4 split		180-360 mm	12	Ident. No.	805 ○

Prod. Gr. 502

Drawer insert materials for ANKE V series combination workbenches

For individual drawer division

Application:

For customised fitting and partitioning of individual drawers.

Technical data:

- Width: 500 mm
- Depth: 540 mm

Execution:

- Suitable for drawer internal dimensions: Width x depth 500 x 540 mm
- Ident. No. 011-040:** Can be used from a front height of 90 mm
- Ident. No. 082-090:** AQUARADO organisation system consisting of textured mat and boxes



Ident. No. 011

- ① Plastic compartment insert



Ident. No. 032

- ② 5-trough insert made of plastic with 10 compartment dividers



Ident. No. 040

- ③ 6-trough/10 compartment dividers, from front height of 90 mm



Ident. No. 075

- ⑤ Ribbed rubber mat



Ident. No. 082

- ⑥ Set with textured mat and 14 boxes, from front height 60 mm



Ident. No. 086

- ⑦ Set with textured mat and 11 boxes, from front height 90 mm



Ident. No. 090

- ⑧ Set with textured mat and 11 boxes, from front height 90 mm

	50228...	Anti-slip mat	Ident. No.	002 ●
ANKE	50228...	① Plastic insert with 8 compartments, from a front height of 90 mm	Ident. No.	011 ●
ANKE	50228...	② 5-trough/10 compartment dividers, from a front height of 90 mm	Ident. No.	032 ○
ANKE	50228...	③ 6-trough/10 compartment dividers, from a front height of 90 mm	Ident. No.	040 ○
	50228...	⑤ Ribbed rubber mat	Ident. No.	075 ●
AQUARADO	50228...	⑥ Set with textured mat and 14 boxes from front height 60 mm	Ident. No.	082 ●
AQUARADO	50228...	⑦ Set with textured mat and 11 boxes from front height 90 mm	Ident. No.	086 ●
AQUARADO	50228...	⑧ Set with textured mat and 11 boxes, from a front height of 90 mm	Ident. No.	090 ●

= Prod. Gr. 502

ANKE = Prod. Gr. 502

AQUARADO = Prod. Gr. 581

Source: Hahn+Kolb Werkzeuge GmbH

Technical data subject to change.

Availability subject to country specific rules and regulations.

www.iconridge.com

ATORN® Hard foam inserts, equipped with high-quality ATORN tools

Width 490 mm, depth 265 mm, for ANKE V series combination workbenches

Application:

For flexible and modular equipping of drawers from the ANKE workbenches series V (no. 50201; 50202; 50203; 50236; 50284).

Execution:

- Two-tone foam inserts made of polyethylene (PE) equipped with tool assortments
- Closed cells provide resistance against most oils and chemicals
- The PE foam is lightweight, resistant, durable, odour-neutral and safe for foodstuffs
- One tool insert fills half of the useful area of a drawer with internal dimensions 500 x 540 mm
- Two tool inserts fill the entire useful area of a drawer with internal dimensions 500 x 540 mm

Advantage:

- For clear order and protected storage of tools in the drawers
- Precisely dimensioned cut-outs and a contrast colour (blue) means that missing tools can be spotted at a glance, avoiding any loss of tools
- Expensive tools will be kept safe and protected in the insert

Technical data:

- Depth: 265 mm
- Width: 490 mm
- Height: 30 mm
- Material: PE - Polyethylene
- Colour of top hard foam inlay: Black
- Colour of bottom hard foam inlay: Blue



Ident. No. 405



Ident. No. 420



Ident. No. 425



Ident. No. 430



Ident. No. 435



Ident. No. 440

Composition of set	Suitable for drawer	50537... Ident. No.	
1 ATORN combination spanner width a.f. 6/7/8/9/10/11/12/13/14/15/16/17/18/19/20/21/22/24 mm	90 mm	405	●
ATORN hexagonal angle screwdriver 9 pieces, 1 ATORN slotted screwdriver 5.5 x 100/6.5 x 125/8 x 150 mm, 1 ATORN Phillips screwdriver PH 1/PH 2/PH 3/PZ 1/PZ 2	60 mm	420	●
1 ATORN slotted screwdriver VDE 2.5 x 75/3.5 x 100/4 x 100/5.5 x 125, 1 ATORN Phillips screwdriver VDE PH 0/PH 1/PH 2/PZ 0/PZ 1/PZ 2, ATORN wire-stripping tool, WIHA voltage tester	60 mm	425	●
1 ATORN TORX screwdriver T 6/T 7/T 8/T 9/T 10/T 15/T 20/T 25/T 27/T 30/T 40, ATORN angled screwdriver 8 pieces T 9-T 40 with ball head	60 mm	430	●
1 ATORN round-nose pliers 160 mm ATORN triple pliers 160 mm, ATORN side-cutters 165 mm, ATORN combination pliers 180 mm, ATORN snipe nose pliers 200 mm, ATORN end cutting nippers 200 mm, ATORN water pump pliers VDE 250 mm	60 mm	435	●
1 ATORN round-nose pliers VDE 160 mm, ATORN snipe nose pliers VDE 200 mm straight and bent, ATORN combination pliers VDE 180 mm, ATORN side cutters VDE 160 mm, ATORN water pump pliers VDE 250 mm, ATORN wire stripping pliers VDE 160 mm	60 mm	440	●

Prod. Gr. 547

ATORN® Hard foam inserts, equipped with high-quality ATORN tools

Width 490 mm, depth 265 mm, for ANKE V series combination workbenches

Technical data:

- Depth: 265 mm
- Width: 490 mm
- Height: 30 mm

- Material: PE - Polyethylene
- Colour of top hard foam inlay: Black
- Colour of bottom hard foam inlay: Blue



Ident. No. 445



Ident. No. 450



Ident. No. 460



Ident. No. 470



Ident. No. 475



Ident. No. 490

Composition of set	Suitable for drawer	50537... Ident. No.	
1 ATORN circlip pliers J0/J1/J2/J11/J21/A0/A1/A2/A11/A21	60 mm	445	●
ORION key files 100 mm cut 2, 6 pieces, DICK files 200 mm cut 2, 5 pieces, ORION file brush 115 x 40 mm	60 mm	450	●
1 ATORN machinist's hammer 500 g, ATORN carbide marking needle 150 mm, ORION flat chisel 200 mm, ORION chisel set 6 pcs., ORION pin punch set 6 pcs., ORION drift punch 1-5 mm, ORION centre punch 120 x 10 mm, GEDORE protective cover for 0.5 kg hammer	90 mm	460	●
1 ATORN pocket tape measure 3 m, ATORN triangular hollow-ground scraper 150 mm, ORION knife 165 mm, ORION all-purpose shears 180 mm, ORION saw bow 255 mm, saw blades 12 pieces, TICOM metal marker white, telescopic mirror Ø 50 mm, telescopic pick-up magnet retention force 3 kg, LED hand-held lamp Turbo (without batteries)	60 mm	470	●
ATORN vernier calliper 150 mm, ATORN external micrometer 0-25 mm, ATORN straight edge 125 mm, ATORN back square 100 x 70 mm, ATORN knife-edge square 75 x 50 mm, ATORN spirit level length 400 mm, ORION spring divider 125 mm, ORION Feeler gauges 20 sheets 0.05-1.00 mm, ORION scale spring steel 300 mm, ORION protractor 120 x 150 mm, ORION marking needle 160 x 5 mm	90 mm	475	●
ATORN socket wrench set 1/2" and 1/4", 35 pieces, ATORN Bitbox 32 pieces	60 mm	490	●

Prod. Gr. 547

Source: Hahn+Kolb Werkzeuge GmbH

Technical data subject to change.

Availability subject to country specific rules and regulations.

www.iconridge.com

**Ergonomic workbenches, series WG, height-adjustable with a hand crank****With solid beech panel, 50 mm thick, with drawers****Execution:**

- Height infinitely adjustable from approx. 740-1040 mm using a crank handle (removable) or using a cordless screwdriver (with hexagon socket)
- Base made of square steel tube, outer 60 x 60 x 2 mm, inner 55 x 55 x 2 mm, with level compensation on all four feet

Advantage:

- Workbench can be quickly and easily adjusted to the desired working height
- Always working at the right height ensures ideal ergonomic conditions

Delivery:

Fully assembled including hand crank

Notes:

Transparent soft PVC mats for protecting work surfaces, see no. 50233 905-930

Technical data:

- Material of the worktop: Solid beech
- Panel depth: 700 mm
- Board thickness: 50 mm
- Min. height: 740 mm
- Max. height: 1040 mm
- Draw width (inner dimension): 450 mm
- Drawer depth (inner dimension): 600 mm
- Pullout type: Full extension
- Load-carrying capacity per drawer: 70 kg
- Drawer surface: 0.27 m²
- Base frame material: Steel plate
- With single pull-out safety brake: Yes
- Adjustable in height: Yes
- Levelling: Yes
- Load-carrying capacity: 800 kg
- Dynamic load-carrying capacity: 400 kg
- Central locking: Yes
- Lock type: DOM® locking system
- Surface: Powder-coated



Manually height adjustable



Height adjustable via crank



Adjustable with a cordless screwdriver (with hexagon socket head) – not included in delivery



Plate length (mm)				1500	1500	1500	2000	2000	2000
Number of drawers (PCS)				2	3	4	2	3	4
Drawer front height				1 x 150 mm 1 x 180 mm	1 x 90 mm 2 x 120 mm	2 x 60 mm 1 x 90 mm 1 x 120 mm	1 x 150 mm 1 x 180 mm	1 x 90 mm 2 x 120 mm	2 x 60 mm 1 x 90 mm 1 x 120 mm
	Body colour	Colour of front							
50212...	Light grey RAL 7035	Anthracite gray RAL 7016	Ident. No.	331	335	339	343	347	351

Prod. Gr. 5BC

**Mobile workbench with manual height adjustment****Solid beechwood 1500 mm, 2 drawers with full extension, height-adjustable by crank handle****Execution:**

- Continuous height adjustment from approx. 740-1040 mm using a hand crank (removable) or cordless screwdriver (with hexagon socket)
- Base made of square steel tube, outer 60 x 60 x 2 mm, inner 55 x 55 x 2 mm, with level compensation on all four feet
- Runs on 2 steering rollers and 2 fixed castors
- Steering rollers with wheel block

Advantage:

- Workbench can be quickly and easily adjusted to the desired working height
- always working at the right height ensures ideal ergonomic conditions
- Running gear makes workbench suitable for mobile use

Delivery:

Fully assembled including hand crank

Notes:

Transparent soft PVC mats for protecting work surfaces, see no. 50233 905-930

Technical data:

- Material of the worktop: Solid beech
- Plate length: 1500 mm
- Panel depth: 700 mm
- Board thickness: 50 mm
- Min. height: 740
- Max. height: 1040
- Number of drawers: 2
- Drawer front height: 1 x 150 mm | 1 x 180 mm
- Draw width (inner dimension): 450
- Drawer depth (inner dimension): 600
- Pullout type: Full extension
- Load-carrying capacity per drawer: 70 kg
- Drawer surface: 0.27 m²
- Base frame material: Steel plate
- With single pull-out safety brake: Yes
- Adjustable in height: Yes
- Levelling: Yes
- Central locking: No
- Lock type: DOM® cylinder lock
- Surface: Powder-coated



	Body colour	Colour of front	Ident. No.
50212...	Light grey RAL 7035	Anthracite grey RAL 7016	381
			○

Prod. Gr. 5BC

WG series ergonomic workbenches, electrical height adjustment With solid beech panel, 50 mm thick, with drawers

Execution:

- Base made of square steel tube, outer 60 x 60 x 2 mm, inner 55 x 55 x 2 mm, with level compensation on all four feet
- Height infinitely adjustable from approx. 740-1040 mm via an electric control panel
- One perforated metal panel wall on both the right and left end faces of the workbench
- Fully assembled

Advantage:

- Workbench can be quickly and easily adjusted to the desired working height
- Always working at the right height ensures ideal ergonomic conditions
- Up to 4 different work heights are programmable and accessible at the touch of a button thanks to the memory function

Notes:

Transparent soft PVC mats for protecting work surfaces, see no. 50233 905-930

Technical data:

- Material of the worktop: Solid beech
- Panel depth: 700 mm
- Board thickness: 50 mm
- Min. height: 740 mm
- Max. height: 1040 mm
- Draw width (inner dimension): 450 mm
- Drawer depth (inner dimension): 600 mm
- Pullout type: Full extension
- Load-carrying capacity per drawer: 70 kg
- Drawer surface: 0.27 m²
- Base frame material: Steel plate
- With single pull-out safety brake: Yes
- Adjustable in height: Yes
- Levelling: Yes
- Load-carrying capacity: 800 kg
- Dynamic load-carrying capacity: 400 kg
- Central locking: Yes
- Lock type: DOM® locking system
- Surface: Powder-coated



Ident. No. 031, 039



Ident. No. 035, 043



Control panel for electrical height adjustment

Plate length (mm)				1500	1500	2000	2000
Number of drawers (PCS)				1	2	1	2
Drawer front height				1 x 180 mm	2 x 90 mm	1 x 180 mm	2 x 90 mm
50185...	Body colour	Colour of front	Ident. No.	031	035	039	043
	Light grey RAL 7035	Anthracite grey RAL 7016					

Prod. Gr. 5BC

**THE HIGHEST QUALITY PRODUCTS
FOR MAXIMUM EFFICIENCY.**

WE HAVE WHAT IT TAKES.

For a complete range of products that meet the toughest demands, visit www.iconridge.com



ORION drawer workbenches

With beech multiplex panel, 40 mm thick, drawer with 80% partial extension

Design:

- Workbench top panel, beech multiplex
- Worktop panel length 1500 and 2000 mm, depth x thickness 750 x 40 mm, working height 840 mm
- Optionally with lowerable transport wheels
- Robustly welded sheet steel construction, base made of square steel tube 45 x 45 x 2 mm, with level compensation
- Total load capacity of 800 kg when stationary, 400 kg when mobile, with evenly distributed load



Workbench 1500



Workbench 1500 mobile



Workbench 2000

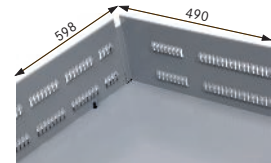
Standard features:



Workbench top panel in multiplex beech, 40 mm thick



Drawers with 80% partial extension aluminium grip strips, paper and cellophane strips



Drawers with slotted walls, load capacity 70 kg per drawer



Door opening angle 180°



Central lock, incl. 2 keys



Base made of square steel tube, 45 x 45 x 2 mm with level compensation on all four feet

Powder-coated surface: Body as well as fronts RAL 7035 light grey

ORION® Cabinet workbench 1500

beech multiplex, 1500 mm, 1 drawer with partial extension, 1 door

Execution:

- Robustly welded sheet steel construction
- Frame made of square steel tube 45 x 45 x 2 mm, with level compensation

Notes:

To order customised hard foam inserts, please use the following clear internal dimensions: W x D: 478 mm x 586 mm

Technical data:

- Material of the worktop: Multiplex beech
- Plate length: 1500 mm
- Panel depth: 750 mm
- Board thickness: 40 mm
- Working height: 840 mm
- Number of drawers: 1 PCS
- Draw width (inner dimension): 490 mm
- Drawer depth (inner dimension): 598 mm
- Pullout type: Partial extension
- Load-carrying capacity per drawer: 70 kg
- Number of doors: 1 PCS
- With single pull-out safety brake: No
- Load-carrying capacity: 800 kg
- Lock type: Cylinder lock
- Surface: Powder-coated



	Body colour	Colour of front		
50100...	Light grey RAL 7035	Light grey RAL 7035	Ident. No.	121 O

Prod. Gr. 586

ORION® Cabinet workbench 1500

beech multiplex, 1500 mm, 2 drawers with partial extension, 2 doors

Execution:

- Robustly welded sheet steel construction
- Frame made of square steel tube 45 x 45 x 2 mm, with level compensation

Notes:

To order customised hard foam inserts, please use the following clear internal dimensions: W x D: 478 mm x 586 mm

Technical data:

- Material of the worktop: Multiplex beech
- Plate length: 1500 mm
- Panel depth: 750 mm
- Board thickness: 40 mm
- Working height: 840 mm
- Number of drawers: 2 PCS
- Draw width (inner dimension): 490 mm
- Drawer depth (inner dimension): 598 mm
- Pullout type: Partial extension
- Load-carrying capacity per drawer: 70 kg
- Number of doors: 2 PCS
- With single pull-out safety brake: No
- Load-carrying capacity: 800 kg
- Lock type: Cylinder lock
- Surface: Powder-coated



	Body colour	Colour of front		
50100...	Light grey RAL 7035	Light grey RAL 7035	Ident. No.	122 ○

Prod. Gr. 586

ORION® Cabinet workbench 1500

beech multiplex, 1500 mm, 3 drawers with partial extension, 1 door

Execution:

- Robustly welded sheet steel construction
- Frame made of square steel tube 45 x 45 x 2 mm, with level compensation

Notes:

To order customised hard foam inserts, please use the following clear internal dimensions: W x D: 478 mm x 586 mm

Technical data:

- Material of the worktop: Multiplex beech
- Plate length: 1500 mm
- Panel depth: 750 mm
- Board thickness: 40 mm
- Working height: 840 mm
- Number of drawers: 3 PCS
- Draw width (inner dimension): 490 mm
- Drawer depth (inner dimension): 598 mm
- Pullout type: Partial extension
- Load-carrying capacity per drawer: 70 kg
- Number of doors: 1 PCS
- With single pull-out safety brake: No
- Load-carrying capacity: 800 kg
- Lock type: Cylinder lock
- Surface: Powder-coated



	Body colour	Colour of front		
50100...	Light grey RAL 7035	Light grey RAL 7035	Ident. No.	123 ○

Prod. Gr. 586

ORION® Cabinet workbench 1500

beech multiplex, 1500 mm, 6 drawers with partial extension

Execution:

- Robustly welded sheet steel construction
- Frame made of square steel tube 45 x 45 x 2 mm, with level compensation

Notes:

To order customised hard foam inserts, please use the following clear internal dimensions: W x D: 478 mm x 586 mm

Technical data:

- Material of the worktop: Multiplex beech
- Plate length: 1500 mm
- Panel depth: 750 mm
- Board thickness: 40 mm
- Working height: 840 mm
- Number of drawers: 6 PCS
- Draw width (inner dimension): 490 mm
- Drawer depth (inner dimension): 598 mm
- Load-carrying capacity per drawer: 70 kg
- With single pull-out safety brake: No
- Load-carrying capacity: 800 kg
- Lock type: Cylinder lock
- Surface: Powder-coated



	Body colour	Colour of front		
50100...	Light grey RAL 7035	Light grey RAL 7035	Ident. No.	124 ○

Prod. Gr. 586

ORION® Cabinet workbench 1500 with lowerable wheels

With 6 drawers with 80% partial extension

Application:

The mobile workstation with versatile options for use.

Execution:

- Robustly welded sheet steel construction
- Frame made of square steel tube 45 x 45 x 2 mm, with level compensation
- Door opening angle 180°

Advantage:

- Can be lifted, lowered and moved in all directions by simply moving the lever on the workbench
- In lowered state absolutely tilt-proof on four feet

Technical data:

- Material of the worktop: Multiplex beech
- Plate length: 1500 mm
- Panel depth: 750 mm
- Board thickness: 40 mm
- Working height: 840 mm
- With single pull-out safety brake: No
- With single-locking drawers: No
- Number of doors: 1 PCS
- On castors: Yes
- Moving device, can be lowered: Yes
- With sliding handle: No
- Load-carrying capacity: 800 kg
- Dynamic load-carrying capacity: 400 kg
- Number of fixed rollers: 2 PCS
- Number of steering rollers: 2 PCS
- With wheel lock: No
- Material of the wheel: Polyamide
- Wheel diameter: 80 mm
- Central locking: Yes
- Lock type: Cylinder lock
- Material: Sheet steel
- Surface: Powder-coated



Number of drawers (PCS)	1		
Pullout type	Partial extension		
Load-carrying capacity per drawer (kg)	70		
Draw width (inner dimension) (mm)	490		
Drawer depth (inner dimension) (mm)	598		
	Body colour	Colour of front	Ident. No.
50100...	Light grey RAL 7035	Light grey RAL 7035	131 ○

Prod. Gr. 586

ORION® Cabinet workbench 2000

beech multiplex, 2000 mm, 6 drawers with partial extension, 1 shelf

Execution:

- Robustly welded sheet steel construction
- Frame made of square steel tube 45 x 45 x 2 mm, with level compensation

Notes:

To order customised hard foam inserts, please use the following clear internal dimensions: W x D: 478 mm x 586 mm

Technical data:

- Material of the worktop: Multiplex beech
- Plate length: 2000 mm
- Panel depth: 750 mm
- Board thickness: 40 mm
- Working height: 840 mm
- Number of drawers: 6 PCS
- Draw width (inner dimension): 490 mm
- Drawer depth (inner dimension): 598 mm
- Pullout type: Partial extension
- Load-carrying capacity per drawer: 70 kg
- With single pull-out safety brake: No
- Load-carrying capacity: 800 kg
- Lock type: Cylinder lock
- Surface: Powder-coated



	Body colour	Colour of front	Ident. No.
50100...	Light grey RAL 7035	Light grey RAL 7035	161 ○

Prod. Gr. 586

ORION® Cabinet workbench 2000

beech multiplex, 2000 mm, 3 drawers with partial extension, 2 doors

Execution:

- Robustly welded sheet steel construction
- Frame made of square steel tube 45 x 45 x 2 mm, with level compensation

Notes:

To order customised hard foam inserts, please use the following clear internal dimensions: W x D: 478 mm x 586 mm

Technical data:

- Material of the worktop: Multiplex beech
- Plate length: 2000 mm
- Panel depth: 750 mm
- Board thickness: 40 mm
- Working height: 840 mm
- Number of drawers: 3 PCS
- Draw width (inner dimension): 490 mm
- Drawer depth (inner dimension): 598 mm
- Pullout type: Partial extension
- Load-carrying capacity per drawer: 70 kg
- Number of doors: 2 PCS
- With single pull-out safety brake: No
- Load-carrying capacity: 800 kg
- Lock type: Cylinder lock
- Surface: Powder-coated



	Body colour	Colour of front	Ident. No.
50100...	Light grey RAL 7035	Light grey RAL 7035	162 ○

Prod. Gr. 586

ORION® Cabinet workbench 2000

beech multiplex, 2000 mm, 5 drawers with partial extension, 2 doors

Execution:

- Robustly welded sheet steel construction
- Frame made of square steel tube 45 x 45 x 2 mm, with level compensation

Notes:

To order customised hard foam inserts, please use the following clear internal dimensions: W x D: 478 mm x 586 mm

Technical data:

- Material of the worktop: Multiplex beech
- Plate length: 2000 mm
- Panel depth: 750 mm
- Board thickness: 40 mm
- Working height: 840 mm
- Number of drawers: 5 PCS
- Draw width (inner dimension): 490 mm
- Drawer depth (inner dimension): 598 mm
- Pullout type: Partial extension
- Load-carrying capacity per drawer: 70 kg
- Number of doors: 2 PCS
- With single pull-out safety brake: No
- Load-carrying capacity: 800 kg
- Lock type: Cylinder lock
- Surface: Powder-coated



	Body colour	Colour of front		
50100...	Light grey RAL 7035	Light grey RAL 7035	Ident. No.	163 ○

Prod. Gr. 586

ORION® Cabinet workbench 2000

Beech multiplex, 2000 mm, 5 drawers with partial extension, 1 door, 1 shelf

Execution:

- Robustly welded sheet steel construction
- Frame made of square steel tube 45 x 45 x 2 mm, with level compensation

Notes:

To order customised hard foam inserts, please use the following clear internal dimensions: W x D: 478 mm x 586 mm

Technical data:

- Material of the worktop: Multiplex beech
- Plate length: 2000 mm
- Panel depth: 750 mm
- Board thickness: 40 mm
- Working height: 840 mm
- Number of drawers: 5 PCS
- Draw width (inner dimension): 490 mm
- Drawer depth (inner dimension): 598 mm
- Load-carrying capacity per drawer: 70 kg
- Number of doors: 1 PCS
- With single pull-out safety brake: No
- Load-carrying capacity: 800 kg
- Lock type: Cylinder lock
- Surface: Powder-coated



	Body colour	Colour of front		
50100...	Light grey RAL 7035	Light grey RAL 7035	Ident. No.	164 ○

Prod. Gr. 586



power strips for workbenches

version:

housing made of sheet steel, height 170 mm, depth 90 mm, length 800-4050 mm. for fitting with components according to illustration.



delivery:

- unwired
- for length 2800 mm: two-piece; for length 4050 mm: three-piece

- ① illuminated one/off switch 2-pin
- ② Schuko socket with cap 2-pin + E 10/16 A 230 V 50 Hz
- ③ CEE socket 16 A 400 V/50 Hz with cap 5-pin
- ④ circuit breaker 1-pin B 16 A
- ⑤ circuit breaker 3-pin C 16 A
- ⑥ screw fuse element Neozed 3-pin without fuse
- ⑦ fault current circuit breaker (FI) 25 A 30 mA 230 V
- ⑦ fault current circuit breaker (FI) 25 A 30 mA 400 V
- ⑧ emergency stop button without key
- ⑨ emergency stop button with key
- ⑩ pole terminal 4 mm black
- ⑪ earthing socket yellow/green 4 mm
- ⑫ earthing socket 4 mm red
- ⑬ compressed air quick-release coupling

➔ individual fitting of power strip on request.

Drawer insert material for ORION workbenches

Application:

Ident. No. 112–114: For HK workbenches series L, for drawer front height 180 mm.

Ident. No. 116: For HK workbenches, series L, for drawer front height 180 mm.

Ident. No. 120: For ORION workbenches, front height 180 mm.

Ident. No. 130–135: For ORION workbenches, drawer front height 180 mm.

Execution:

▪ **Ident. No. 120:** Oil-resistant

▪ **Ident. No. 130–135:**

- in high-quality ABS plastic
- Colour black

Technical data:

- For drawer cabinet height: 180 mm



Ident. No. 112



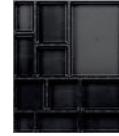
Ident. No. 114



Ident. No. 116



Ident. No. 120



Ident. No. 130



Ident. No. 135

	50199...	6 compartments	Ident. No.	112 ○
	50199...	12 compartments	Ident. No.	114 ○
	50199...	16 compartments	Ident. No.	116 ○
	50199...	Ribbed rubber mat	Ident. No.	120 ●
AQURADO	50199...	Boxes 48 mm high	Ident. No.	130 ●
AQURADO	50199...	Boxes 24 mm high	Ident. No.	135 ●

AQURADO = Prod. Gr. 581

HK = Prod. Gr. 586

Soft PVC support, transparent For workbenches

Application:

Protects the work surface from soiling and damage.

Execution:

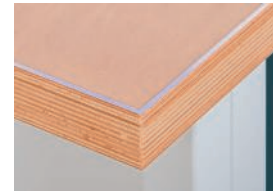
- Free from DOP, cadmium and silicone
- Fire protection class B2 in line with DIN 4102

Notes:

Custom-cut and on-the-roll products up to max. 20 m available upon request

Technical data:

- Colour: Transparent
- Min. temperature resistance: -30 °C
- Max. temperature resistance: 60 °C



Length (mm)		1500	2000	1500	2000	1500	2000
Depth (mm)		750	750	700	700	800	800
Total thickness (mm)		3	3	3	3	3	3
50233...	Ident. No.	915	920	905	910	928	930
		●	●	●	●	●	●

Prod. Gr. 504



V series workbenches – drawers with 100% full extension

With different types of plates, 50 mm thick

Design:

- Workbench top panel optionally solid beech (BMP) with universal coating (UBP) or zinc sheet metal coating (ZBP)
- Worktop panel length 800, 1500, 2000, 2800 and 4050 mm, depth x thickness 700 x 50 mm, working height 850 mm and 900 mm
- Robustly welded sheet steel construction, base made of square steel tube 45 x 45 x 2 mm, with level compensation
- Stationary design: Total load capacity of 1500 kg with evenly distributed load
- Mobile design: Total load capacity of 600 kg with evenly distributed load
- With lowerable transport wheels, 450 kg with evenly distributed load
- Other designs available on request.



V 800 series



V 1500 series



V 2000 series



V 2800 series



V 4050 series

Standard features:

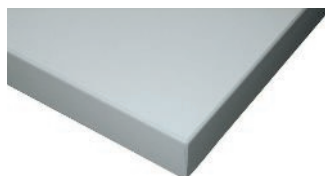
Drawers with 100% full extension	Load capacity 100 kg per drawer	Individual drawer locking: only one drawer can be opened at a time	Drawers with perforated floors and slotted walls for individual partitioning	Aluminium handle strips with inscription tapes and PVC protective profile	Door opening angle 180°	Base made of square steel tube 45 x 45 x 2 mm	min. 1 x level compensation to max. 20 mm	Central lock, incl. 2 keys	

Optionally available in 3 panel versions:



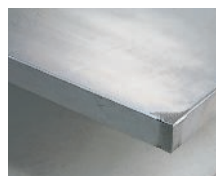
Solid beech (BMP)

Solid, sandable, glued structure, special interlinking and bonding, thus extremely robust and with almost unlimited durability.



Panel with universal coating (UBP)

Wooden base panel with grey-blue, antistatic and abrasion-resistant coating, continuous 2 mm ABS edge. Resistant short-term to weak acids, alkalis and heat of up to approx. 250°C. Resistant long-term to greases and oils.



Worktop with sheet zinc metal coating (ZBP)

Wooden base panel with 1.5 mm thick, galvanised sheet steel coating, flanged on all sides and fastened on the base. Corners are welded and ground. Ideal for working with oil. Hot-dip galvanised for long-lasting corrosion resistance.



All drawers with 100% full extension – for easy and comfortable access.

Powder-coated surface: Body RAL 7035 light grey with fronts available in RAL 5010 gentian blue or RAL 7016 anthracite grey

Choose your preferred colour (no extra charge) for products with this logo:



RAL 1015	RAL 2004	RAL 3002	RAL 3020	RAL 5010	RAL 5012	RAL 5014	RAL 5015	RAL 6011	RAL 7035	RAL 9010
light ivory	pure orange	carmin red	traffic red	gentian blue	light blue	pigeon blue	sky blue	reseda green	light grey	pure white

Colours may be subject to printing-related differences; the original colours according to RAL are definitive.

**Series V 1500 workbenches – drawers with 100% full extension****Worktop length 1500 mm – equipped with 2 drawers and 1 open compartment****Execution:**

- Solidly welded steel sheet construction
- Base made of square-section steel tube 45 x 45 x 2 mm, with level compensation
- 2 drawers with 100% full extension on the left, 1 x front height 180 mm, 1 x front height 360 mm, 1 open compartment on the right

Notes:

To order customised hard foam inserts, please use the following clear internal dimensions: W x D: 490 mm x 530 mm

Technical data:

- Plate length: 1500 mm
- Panel depth: 700 mm
- Board thickness: 50 mm
- Number of drawers: 2 PCS
- Draw width (inner dimension): 500 mm
- Drawer depth (inner dimension): 540 mm
- Pullout type: Full extension
- Load-carrying capacity per drawer: 100 kg
- With single pull-out safety brake: Yes
- Load-carrying capacity: 1500 kg
- Lock type: DOM® locking system
- Surface: Powder-coated



Material of the worktop				Solid beech	Solid beech	Universal covering	Universal covering	Zinc sheet covering	Zinc sheet covering
Working height (mm)				850	900	850	900	850	900
	Body colour	Colour of front							
50221...	Light grey RAL 7035	Anthracite grey RAL 7016	Ident. No.	002	004	006	008	010	012
				○	○	○	○	○	○

Prod. Gr. 502

**Series V 1500 workbenches – drawers with 100% full extension****Worktop length 1500 mm – equipped with 3 drawers and 1 door****Execution:**

- Solidly welded steel sheet construction
- Base made of square-section steel tube 45 x 45 x 2 mm, with level compensation
- 3 drawers 100% full extension on the left, 3 x front height 180 mm, 1 door height 540 mm on the right

Notes:

To order customised hard foam inserts, please use the following clear internal dimensions: W x D: 490 mm x 530 mm

Technical data:

- Plate length: 1500 mm
- Panel depth: 700 mm
- Board thickness: 50 mm
- Number of drawers: 3 PCS
- Draw width (inner dimension): 500 mm
- Drawer depth (inner dimension): 540 mm
- Pullout type: Full extension
- Load-carrying capacity per drawer: 100 kg
- Number of doors: 1 PCS
- With single pull-out safety brake: Yes
- Load-carrying capacity: 1500 kg
- Lock type: DOM® locking system
- Surface: Powder-coated



Material of the worktop				Solid beech	Solid beech	Universal covering	Universal covering	Zinc sheet covering	Zinc sheet covering
Working height (mm)				850	900	850	900	850	900
	Body colour	Colour of front							
50221...	Light grey RAL 7035	Anthracite grey RAL 7016	Ident. No.	038	040	042	044	046	048
				○	○	○	○	○	○

Prod. Gr. 502

**Series V 1500 workbenches – drawers with 100% full extension****Worktop length 1500 mm – equipped with 4 drawers****Execution:**

- Solidly welded steel sheet construction
- Base made of square-section steel tube 45 x 45 x 2 mm, with level compensation
- 2 drawers with 100% full extension on the left and right, 1 x front height 180 mm, 1 x front height 360 mm

Notes:

To order customised hard foam inserts, please use the following clear internal dimensions: W x D: 490 mm x 530 mm

Technical data:

- Plate length: 1500 mm
- Panel depth: 700 mm
- Board thickness: 50 mm
- Number of drawers: 4 PCS
- Draw width (inner dimension): 500 mm
- Drawer depth (inner dimension): 540 mm
- Pullout type: Full extension
- Load-carrying capacity per drawer: 100 kg
- With single pull-out safety brake: Yes
- Load-carrying capacity: 1500 kg
- Lock type: DOM® locking system
- Surface: Powder-coated



Material of the worktop				Solid beech	Solid beech	Universal covering	Universal covering	Zinc sheet covering	Zinc sheet covering
Working height (mm)				850	900	850	900	850	900
	Body colour	Colour of front							
50221...	Light grey RAL 7035	Anthracite grey RAL 7016	Ident. No.	050	052	054	056	058	060
				○	○	○	○	○	○

Prod. Gr. 502

Series V 1500 workbenches – drawers with 100% full extension

Worktop length 1500 mm – equipped with 6 drawers

Execution:

- Solidly welded steel sheet construction
- Base made of square-section steel tube 45 x 45 x 2 mm, with level compensation
- 3 drawers with 100% full extension on the right and left, front height 180 mm

Notes:

To order customised hard foam inserts, please use the following clear internal dimensions: W x D: 490 mm x 530 mm

Technical data:

- Plate length: 1500 mm
- Panel depth: 700 mm
- Board thickness: 50 mm
- Number of drawers: 6 PCS
- Draw width (inner dimension): 500 mm
- Drawer depth (inner dimension): 540 mm
- Pullout type: Full extension
- Load-carrying capacity per drawer: 100 kg
- With single pull-out safety brake: Yes
- Load-carrying capacity: 1500 kg
- Lock type: DOM® locking system
- Surface: Powder-coated



Material of the worktop				Solid beech	Solid beech	Universal covering	Universal covering	Zinc sheet covering	Zinc sheet covering
Working height (mm)				850	900	850	900	850	900
Body colour	Colour of front								
50221...	Light grey RAL 7035	Anthracite grey RAL 7016	Ident. No.	122	124	126	128	130	132
				○	○	○	○	○	○

Prod. Gr. 502

Series V 2000 workbenches – drawers with 100% full extension

Worktop length 2000 mm – equipped with 3 drawers and 2 doors

Execution:

- Solidly welded steel sheet construction
- Base made of square-section steel tube 45 x 45 x 2 mm, with level compensation
- 1 door height 540 mm on both the left and right, 3 drawers with 100% full extension in the centre, front height 180 mm

Notes:

To order customised hard foam inserts, please use the following clear internal dimensions: W x D: 490 mm x 530 mm

Technical data:

- Plate length: 2000 mm
- Panel depth: 700 mm
- Board thickness: 50 mm
- Number of drawers: 3 PCS
- Draw width (inner dimension): 500 mm
- Drawer depth (inner dimension): 540 mm
- Pullout type: Full extension
- Load-carrying capacity per drawer: 100 kg
- Number of doors: 2 PCS
- With single pull-out safety brake: Yes
- Load-carrying capacity: 1500 kg
- Lock type: DOM® locking system
- Surface: Powder-coated



Material of the worktop				Solid beech	Solid beech	Universal covering	Universal covering	Zinc sheet covering	Zinc sheet covering
Working height (mm)				850	900	850	900	850	900
Body colour	Colour of front								
50221...	Light grey RAL 7035	Anthracite grey RAL 7016	Ident. No.	202	204	206	208	210	212
				○	○	○	○	○	○

Prod. Gr. 502

Series V 2000 workbenches – drawers with 100% full extension

Worktop length 2000 mm – equipped with 6 drawers

Execution:

- Solidly welded steel sheet construction
- Base made of square-section steel tube 45 x 45 x 2 mm, with level compensation
- 3 drawers with 100% full extension on the right and left, front height 180 mm, central open compartment

Notes:

To order customised hard foam inserts, please use the following clear internal dimensions: W x D: 490 mm x 530 mm

Technical data:

- Plate length: 2000 mm
- Panel depth: 700 mm
- Board thickness: 50 mm
- Number of drawers: 6 PCS
- Draw width (inner dimension): 500 mm
- Drawer depth (inner dimension): 540 mm
- Pullout type: Full extension
- Load-carrying capacity per drawer: 100 kg
- With single pull-out safety brake: Yes
- Load-carrying capacity: 1500 kg
- Lock type: DOM® locking system
- Surface: Powder-coated



Material of the worktop				Solid beech	Solid beech	Universal covering	Universal covering	Zinc sheet covering	Zinc sheet covering
Working height (mm)				850	900	850	900	850	900
Body colour	Colour of front								
50221...	Light grey RAL 7035	Anthracite grey RAL 7016	Ident. No.	214	216	218	220	222	224
				○	○	○	○	○	○

Prod. Gr. 502



Series V 2000 workbenches – drawers with 100% full extension

Worktop length 2000 mm – equipped with 6 drawers

Execution:

- Solidly welded steel sheet construction
- Base made of square-section steel tube 45 x 45 x 2 mm, with level compensation
- 2 drawers on the left and right and in the centre, 100% full extension, 1 x front height 180 mm and 1 x front height 360 mm

Notes:

To order customised hard foam inserts, please use the following clear internal dimensions: W x D: 490 mm x 530 mm

Technical data:

- Plate length: 2000 mm
- Panel depth: 700 mm
- Board thickness: 50 mm
- Number of drawers: 6 PCS
- Draw width (inner dimension): 500 mm
- Drawer depth (inner dimension): 540 mm
- Pullout type: Full extension
- Load-carrying capacity per drawer: 100 kg
- With single pull-out safety brake: Yes
- Load-carrying capacity: 1500 kg
- Lock type: DOM® locking system
- Surface: Powder-coated



Material of the worktop				Solid beech	Solid beech	Universal covering	Universal covering	Zinc sheet covering	Zinc sheet covering
Working height (mm)				850	900	850	900	850	900
	Body colour	Colour of front							
50221...	Light grey RAL 7035	Anthracite grey RAL 7016	Ident. No.	226 ○	228 ○	230 ○	232 ○	234 ○	236 ○

Prod. Gr. 502



Series V 2000 workbenches – drawers with 100% full extension

Worktop length 2000 mm – equipped with 3 drawers and 1 door

Execution:

- Solidly welded steel sheet construction
- Base made of square-section steel tube 45 x 45 x 2 mm, with level compensation
- 1 door, height 540 mm on the left, open compartment in the centre and 3 drawers with 100% full extension on the right, 1 x front height 90 mm, 1 x front height 180 mm, 1 x front height 270 mm

Notes:

To order customised hard foam inserts, please use the following clear internal dimensions: W x D: 490 mm x 530 mm

Technical data:

- Plate length: 2000 mm
- Panel depth: 700 mm
- Board thickness: 50 mm
- Number of drawers: 3 PCS
- Draw width (inner dimension): 500 mm
- Drawer depth (inner dimension): 540 mm
- Pullout type: Full extension
- Load-carrying capacity per drawer: 100 kg
- Number of doors: 1 PCS
- With single pull-out safety brake: Yes
- Load-carrying capacity: 1500 kg
- Lock type: DOM® locking system
- Surface: Powder-coated



Material of the worktop				Solid beech	Solid beech	Universal covering	Universal covering	Zinc sheet covering	Zinc sheet covering
Working height (mm)				850	900	850	900	850	900
	Body colour	Colour of front							
50221...	Light grey RAL 7035	Anthracite grey RAL 7016	Ident. No.	390 ○	391 ○	392 ○	393 ○	394 ○	395 ○

Prod. Gr. 502



power strips for workbenches

version:

housing made of sheet steel, height 170 mm, depth 90 mm, length 800-4050 mm. for fitting with components according to illustration.



delivery:

- unwired
- for length 2800 mm: two-piece; for length 4050 mm: three-piece

- ① illuminated one/off switch 2-pin
- ② Schuko socket with cap 2-pin + E 10/16 A 230 V 50 Hz
- ③ CEE socket 16 A 400 V/50 Hz with cap 5-pin
- ④ circuit breaker 1-pin B 16 A
- ⑤ circuit breaker 3-pin C 16 A
- ⑥ screw fuse element Neozed 3-pin without fuse
- ⑦ fault current circuit breaker (FI) 25 A 30 mA 230 V
- ⑦ fault current circuit breaker (FI) 25 A 30 mA 400 V
- ⑧ emergency stop button without key
- ⑨ emergency stop button with key
- ⑩ pole terminal 4 mm black
- ⑪ earthing socket yellow/green 4 mm
- ⑫ earthing socket 4 mm red
- ⑬ compressed air quick-release coupling

➡ individual fitting of power strip on request.

Drawer insert materials for ANKE V series box workbenches

For individual drawer divisions

Application:

For customised fitting and partitioning of individual drawers.

Technical data:

- Width: 500 mm
- Depth: 540 mm

Execution:

- Suitable for drawer internal dimensions: Width x depth 500 x 540 mm
- **Ident. No. 011–040:** Can be used from a front height of 90 mm
- **Ident. No. 082–090:** AQUARADO organisation system consisting of textured mat and boxes



Ident. No. 011
① Plastic compartment insert



Ident. No. 032
② 5-trough insert made of plastic with 10 compartment dividers



Ident. No. 040
③ 6-trough/10 compartment dividers, from front height of 90 mm



Ident. No. 075
⑤ Ribbed rubber mat



Ident. No. 082
⑥ Set with textured mat and 14 boxes, from front height 60 mm



Ident. No. 086
⑦ Set with textured mat and 11 boxes, from front height 90 mm



Ident. No. 090
⑧ Set with textured mat and 11 boxes, from front height 90 mm

	50228...	Anti-slip mat	Ident. No.	002
ANKE	50228...	① Plastic insert with 8 compartments, from a front height of 90 mm	Ident. No.	011
ANKE	50228...	② 5-trough/10 compartment dividers, from a front height of 90 mm	Ident. No.	032
ANKE	50228...	③ 6-trough/10 compartment dividers, from a front height of 90 mm	Ident. No.	040
	50228...	⑤ Ribbed rubber mat	Ident. No.	075
AQUARADO	50228...	⑥ Set with textured mat and 14 boxes from front height 60 mm	Ident. No.	082
AQUARADO	50228...	⑦ Set with textured mat and 11 boxes from front height 90 mm	Ident. No.	086
AQUARADO	50228...	Set with textured mat and 11 boxes, from a front height of 90 mm	Ident. No.	090

= Prod. Gr. 502
ANKE = Prod. Gr. 502
AQUARADO = Prod. Gr. 581



Drawer insert materials for ANKE V series box workbenches

Compartment dividers and compartment rails made from sheet steel

Application:

For inserting in drawers of ANKE workbenches series V.

Execution:

- Made of sheet steel



Ident. No. 724-730
1/2 division



Ident. No. 749-755
1/3 division



Ident. No. 774-780
1/4 division



Ident. No. 799-805
1/2-1/4 division

		For drawer front height (mm)	For min./max. drawer front height	Number of compartments (PCS)		
50228...	1/2 split	60		8	Ident. No.	724 ○
50228...	1/3 split	60		12	Ident. No.	749 ○
50228...	1/4 split	60		16	Ident. No.	774 ○
50228...	1/2-1/4 split	60		12	Ident. No.	799 ○
50228...	1/2 split		90-150 mm	8	Ident. No.	725 ○
50228...	1/3 split		90-150 mm	12	Ident. No.	750 ○
50228...	1/4 split		90-150 mm	16	Ident. No.	775 ○
50228...	1/2-1/4 split		90-150 mm	12	Ident. No.	800 ○
50228...	1/2 split		180-360 mm	8	Ident. No.	730 ○
50228...	1/3 split		180-360 mm	12	Ident. No.	755 ○
50228...	1/4 split		180-360 mm	16	Ident. No.	780 ○
50228...	1/2-1/4 split		180-360 mm	12	Ident. No.	805 ○

Prod. Gr. 502

ATORN® Hard foam inserts, equipped with high-quality ATORN tools

Width 490 mm, depth 265 mm, for ANKE V series box workbenches

Application:

For flexible and modular equipping of drawers from the ANKE workbenches series V (no. 50201; 50202; 50203; 50236; 50284).

Execution:

- Two-tone foam inserts made of polyethylene (PE) equipped with tool assortments
- Closed cells provide resistance against most oils and chemicals
- The PE foam is lightweight, resistant, durable, odour-neutral and safe for foodstuffs
- One tool insert fills half of the useful area of a drawer with internal dimensions 500 x 540 mm
- Two tool inserts fill the entire useful area of a drawer with internal dimensions 500 x 540 mm

Advantage:

- For clear order and protected storage of tools in the drawers
- Precisely dimensioned cut-outs and a contrast colour (blue) means that missing tools can be spotted at a glance, avoiding any loss of tools
- Expensive tools will be kept safe and protected in the insert

Technical data:

- Depth: 265 mm
- Width: 490 mm
- Height: 30 mm
- Material: PE - Polyethylene
- Colour of top hard foam inlay: Black
- Colour of bottom hard foam inlay: Blue



Ident. No. 405



Ident. No. 420



Ident. No. 425



Ident. No. 430



Ident. No. 435



Ident. No. 440

Composition of set	Suitable for drawer	50537... Ident. No.	
1 ATORN combination spanner width a.f. 6/7/8/9/10/11/12/13/14/15/16/17/18/19/20/21/22/24 mm	90 mm	405	●
ATORN hexagonal angle screwdriver 9 pieces, 1 ATORN slotted screwdriver 5.5 x 100/6.5 x 125/8 x 150 mm, 1 ATORN Phillips screwdriver PH 1/PH 2/PH 3/PZ 1/PZ 2	60 mm	420	●
1 ATORN slotted screwdriver VDE 2.5 x 75/3.5 x 100/4 x 100/5.5 x 125, 1 ATORN Phillips screwdriver VDE PH 0/PH 1/PH 2/PZ 0/PZ 1/PZ 2, ATORN wire-stripping tool, WIHA voltage tester	60 mm	425	●
1 ATORN TORX screwdriver T 6/T 7/T 8/T 9/T 10/T 15/T 20/T 25/T 27/T 30/T 40, ATORN angled screwdriver 8 pieces T 9-T 40 with ball head	60 mm	430	●

Composition of set	Suitable for drawer	50537... Ident. No.	
1 ATORN round-nose pliers 160 mm, ATORN triple pliers 160 mm, ATORN side-cutters 165 mm, ATORN combination pliers 180 mm, ATORN snipe nose pliers 200 mm, ATORN end cutting nippers 200 mm, ATORN water pump pliers VDE 250 mm	60 mm	435	●
1 ATORN round-nose pliers VDE 160 mm, ATORN snipe nose pliers VDE 200 mm straight and bent, ATORN combination pliers VDE 180 mm, ATORN side cutters VDE 160 mm, ATORN water pump pliers VDE 250 mm, ATORN wire stripping pliers VDE 160 mm	60 mm	440	●

Prod. Gr. 547

ATORN® Hard foam inserts, equipped with high-quality ATORN tools Width 490 mm, depth 265 mm, for ANKE V series box workbenches

Technical data:

- Depth: 265 mm
- Width: 490 mm
- Height: 30 mm

- Material: PE - Polyethylene
- Colour of top hard foam inlay: Black
- Colour of bottom hard foam inlay: Blue



Ident. No. 445



Ident. No. 450



Ident. No. 460



Ident. No. 470



Ident. No. 475



Ident. No. 490

Composition of set	Suitable for drawer	50537... Ident. No.	
1 ATORN circlip pliers J0/J1/J2/J11/J21/A0/A1/A2/A11/A21	60 mm	445	●
ORION key files 100 mm cut 2, 6 pieces, DICK files 200 mm cut 2, 5 pieces, ORION file brush 115 x 40 mm	60 mm	450	●
1 ATORN machinist's hammer 500 g, ATORN carbide marking needle 150 mm, ORION flat chisel 200 mm, ORION chisel set 6 pcs., ORION pin punch set 6 pcs., ORION drift punch 1-5 mm, ORION centre punch 120 x 10 mm, GEDORE protective cover for 0.5 kg hammer	90 mm	460	●
1 ATORN pocket tape measure 3 m, ATORN triangular hollow-ground scraper 150 mm, ORION knife 165 mm, ORION all-purpose shears 180 mm, ORION saw bow 255 mm, saw blades 12 pieces, TICOM metal marker white, telescopic mirror Ø 50 mm, telescopic pick-up magnet retention force 3 kg, LED hand-held lamp Turbo (without batteries)	60 mm	470	●
ATORN vernier calliper 150 mm, ATORN external micrometer 0-25 mm, ATORN straight edge 125 mm, ATORN back square 100 x 70 mm, ATORN knife-edge square 75 x 50 mm, ATORN spirit level length 400 mm, ORION spring divider 125 mm, ORION Feeler gauges 20 sheets 0.05-1.00 mm, ORION scale spring steel 300 mm, ORION protractor 120 x 150 mm, ORION marking needle 160 x 5 mm	90 mm	475	●
ATORN socket wrench set 1/2" and 1/4", 35 pieces, ATORN Bitbox 32 pieces	60 mm	490	●

Prod. Gr. 547

**ARE YOU LOOKING FOR PRODUCTS
THAT MEET THE TOUGHEST DEMANDS?**

WE HAVE WHAT IT TAKES.

For a complete range of products that meet the toughest demands, visit www.iconridge.com



VX series workbenches – XXL drawers with 100% full extension

With different types of plates, 50 mm thick

Design:

- Workbench top panel either solid beech (BMP), with universal coating (UBP) or with zinc sheet metal coating (ZBP)
- Worktop panel length 1500 and 2000 mm, depth x thickness 800 x 50 mm, working height 850 mm and 900 mm
- Sturdy, welded sheet steel construction, base made of square steel tube 45 x 45 x 2 mm, with level compensation
- Total load capacity 1500 kg with evenly distributed load
- XXL drawers with full extension – ideal for storing tool cases and long and large tools
- Other designs available on request.



VX 1500 series with XXL drawers 1200 x 600 mm



V 2000 series with XL drawers 750 x 600 mm

Standard features:

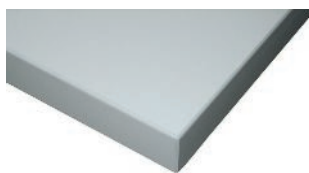
Drawers with 100% full extension	Load capacity 100 kg per drawer	Individual drawer locking: only one drawer can be opened at a time	Drawers with perforated floors and slotted walls for individual partitioning	Aluminium handle strips with inscription tapes and PVC protective profile	Base made of square steel tube 45 x 45 x 2 mm	Level compensation min. 1 x to max. 20 mm	Central lock, incl. 2 keys	

Optionally available in 3 panel versions:



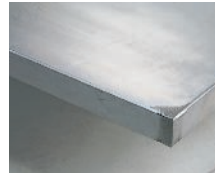
Solid beech (BMP)

Solid, sandable, glued structure, special interlinking and bonding, thus extremely robust and with almost unlimited durability.



Panel with universal coating (UBP)

Wooden base panel with grey-blue, antistatic and abrasion-resistant coating, continuous 2 mm ABS edge. Resistant short-term to weak acids, alkalis and heat of up to approx. 250°C. Resistant long-term to greases and oils.



Worktop with sheet zinc metal coating (ZBP)

Wooden base panel with 1.5 mm thick, galvanised sheet steel coating, flanged on all sides and fastened on the base. Corners are welded and ground. Ideal for working with oil. Hot-dip galvanised for long-lasting corrosion resistance.

Powder-coated surface: Body RAL 7035 light grey with fronts available in RAL 5010 gentian blue or RAL 7016 anthracite grey

Choose your preferred colour (no extra charge) for products with this logo:



RAL 1015	RAL 2004	RAL 3002	RAL 3020	RAL 5010	RAL 5012	RAL 5014	RAL 5015	RAL 6011	RAL 7035	RAL 9010
light ivory	pure orange	carmine red	traffic red	gentian blue	light blue	pigeon blue	sky blue	reseda green	light grey	pure white

Colours may be subject to printing-related differences; the original colours according to RAL are definitive.



power strips for workbenches

version:

housing made of sheet steel, height 170 mm, depth 90 mm, length 800-4050 mm. for fitting with components according to illustration.



delivery:

- unwired
- for length 2800 mm: two-piece; for length 4050 mm: three-piece

- ① illuminated one/off switch 2-pin
- ② Schuko socket with cap 2-pin + E 10/16 A 230 V 50 Hz
- ③ CEE socket 16 A 400 V/50 Hz with cap 5-pin
- ④ circuit breaker 1-pin B 16 A
- ⑤ circuit breaker 3-pin C 16 A
- ⑥ screw fuse element Neozed 3-pin without fuse
- ⑦ fault current circuit breaker (FI) 25 A 30 mA 230 V
- ⑧ fault current circuit breaker (FI) 25 A 30 mA 400 V
- ⑨ emergency stop button without key
- ⑩ emergency stop button with key
- ⑪ pole terminal 4 mm black
- ⑫ earthing socket yellow/green 4 mm
- ⑬ earthing socket 4 mm red
- ⑭ compressed air quick-release coupling

➔ individual fitting of power strip on request.



Heavy-duty table, electric height adjustment

With beech multiplex panel, 50 mm thick – dynamic carrying capacity of up to 2000 kg



Execution:

- fully welded tubular steel frame with bolted stabilisation panels
- height-adjustable via 4 electric motors, coupled via electronic control unit, 370 mm stroke, controlled via keypad
- front sides with cover, incl. 10 x 10 mm square perforation, 38 mm grid spacing
- table top protrudes over base frame by 80 mm along each long side and by 62 mm along each short side
- square base plates, 140 x 140 mm, with perforation for ground anchoring
- storage trays 640 mm deep, load capacity 100 kg
- multiplex beech worktop, 50 mm thick, oiled surface
- electrical connected load: 230 V/720 watts
- equipped with emergency stop switch and 3 CEE 7/4 sockets (front right)

Advantage:

- dynamically loadable up to 2000 kg!
- table can be quickly and easily adjusted to the desired working height
- For perfect ergonomics in the workplace

Notes:

For optional accessories such as workbench set-ups with perforated metal plate rear panels, workstation lighting, swivel arm elements and open bins for the ergonomic provision of tools and materials, see from no. 50202206-256, drawer block for table deliverable on request. Looking for a customised heavy-duty table to suit your requirements? Contact us.

Technical data:

- Material of the worktop: Multiplex beech
- Panel depth: 800 mm
- Board thickness: 50 mm
- Min. height: 710 mm
- Max. height: 1080 mm
- Dynamic load-carrying capacity: 2000 kg
- Material of the frame: Steel plate
- Adjustable in height: Yes
- Surface: Powder-coated

Plate length (mm)				1685	2030
Colour	Frame colour	Ident. No.			
50202...	Optional	Selectable		103 ○	105 ○

Prod. Gr. 5BC



VS series heavy-duty workbenches – load capacity 4.2 tons

Drawers with 100% full extension

Design:

- Workbench top panel solid beech (BMP)
- Worktop panel length 1500, 2250 and 3000 mm, depth x thickness 800 x 100 mm, working height 900 mm

- Robustly welded sheet steel construction, base made of square steel tube 80 x 80 x 3 mm, with floor attachment lugs
- Total load capacity 4200 kg with evenly distributed load
- Other designs available on request.



VS 1500 series



VS 2250 series



VS 3000 series

Standard features:

Drawers with 100% full extension	Load capacity 100 kg per drawer	Individual drawer locking: only one drawer can be opened at a time	Drawers with perforated floors and slotted walls for individual partitioning	Aluminium handle strips with inscription tapes and PVC protective profile	Door opening angle 180°	Base made of square steel tube 80 x 80 x 3 mm	Floor attachment lugs	Central lock, incl. 2 keys	



80 x 80 x 3 mm steel tube with floor attachment lugs



Solid beech worktop 100 mm thick
load capacity max. 4200 kg

Powder-coated surface: Body RAL 7035 light grey with fronts available in RAL 5010 gentian blue or RAL 7016 anthracite grey

Choose your preferred colour (no extra charge) for products with this logo:



RAL 1015	RAL 2004	RAL 3002	RAL 3020	RAL 5010	RAL 5012	RAL 5014	RAL 5015	RAL 6011	RAL 7035	RAL 9010
light ivory	pure orange	carmine red	traffic red	gentian blue	light blue	pigeon blue	sky blue	reseda green	light grey	pure white

Colours may be subject to printing-related differences; the original colours according to RAL are definitive.

← Workbench selection overview



power strips for workbenches

version:

housing made of sheet steel, height 170 mm, depth 90 mm, length 800-4050 mm. for fitting with components according to illustration.

delivery:

- unwired
- for length 2800 mm: two-piece; for length 4050 mm: three-piece



- ① illuminated one/off switch 2-pin
- ② Schuko socket with cap 2-pin + E 10/16 A 230 V 50 Hz
- ③ CEE socket 16 A 400 V/50 Hz with cap 5-pin
- ④ circuit breaker 1-pin B 16 A
- ⑤ circuit breaker 3-pin C 16 A
- ⑥ screw fuse element Neozed 3-pin without fuse
- ⑦ fault current circuit breaker (FI) 25 A 30 mA 230 V
- ⑧ fault current circuit breaker (FI) 25 A 30 mA 400 V
- ⑨ emergency stop button without key
- ⑩ emergency stop button with key
- ⑪ pole terminal 4 mm black
- ⑫ earthing socket yellow/green 4 mm
- ⑬ earthing socket 4 mm red
- ⑭ compressed air quick-release coupling

➡ individual fitting of power strip on request.

**Drawer insert materials for ANKE VS series heavy-duty workbenches**

Compartment dividers and compartment rails made from sheet steel

Application:

For inserting in drawers of ANKE workbenches series V.

Execution:

- Made of sheet steel



Ident. No. 724-730
1/2 division



Ident. No. 749-755
1/3 division



Ident. No. 774-780
1/4 division



Ident. No. 799-805
1/2-1/4 division

		For drawer front height (mm)	For min./max. drawer front height	Number of compartments (PCS)		
50228...	1/2 split	60		8	Ident. No.	724 ○
50228...	1/3 split	60		12	Ident. No.	749 ○
50228...	1/4 split	60		16	Ident. No.	774 ○
50228...	1/2-1/4 split	60		12	Ident. No.	799 ○
50228...	1/2 split		90-150 mm	8	Ident. No.	725 ○
50228...	1/3 split		90-150 mm	12	Ident. No.	750 ○
50228...	1/4 split		90-150 mm	16	Ident. No.	775 ○
50228...	1/2-1/4 split		90-150 mm	12	Ident. No.	800 ○
50228...	1/2 split		180-360 mm	8	Ident. No.	730 ○
50228...	1/3 split		180-360 mm	12	Ident. No.	755 ○
50228...	1/4 split		180-360 mm	16	Ident. No.	780 ○
50228...	1/2-1/4 split		180-360 mm	12	Ident. No.	805 ○

Prod. Gr. 502

Drawer insert materials for ANKE VS series heavy-duty workbenches

For individual drawer division

Application:

For customised fitting and partitioning of individual drawers.

Technical data:

- Width: 500 mm
- Depth: 540 mm

Execution:

- Suitable for drawer internal dimensions: Width x depth 500 x 540 mm
- Ident. No. 011-040:** Can be used from a front height of 90 mm
- Ident. No. 082-090:** AQUARADO organisation system consisting of textured mat and boxes



Ident. No. 011
① Plastic compartment insert



Ident. No. 032
② 5-trough insert made of plastic with 10 compartment dividers



Ident. No. 040
③ 6-trough/10 compartment dividers, from front height of 90 mm



Ident. No. 075
⑤ Ribbed rubber mat



Ident. No. 082
⑥ Set with textured mat and 14 boxes, from front height 60 mm



Ident. No. 086
⑦ Set with textured mat and 11 boxes, from front height 90 mm



Ident. No. 090
⑧ Set with textured mat and 11 boxes, from front height 90 mm

	50228...	Anti-slip mat	Ident. No.	002 ●
ANKE	50228...	① Plastic insert with 8 compartments, from a front height of 90 mm	Ident. No.	011 ●
ANKE	50228...	② 5-trough/10 compartment dividers, from a front height of 90 mm	Ident. No.	032 ○
ANKE	50228...	③ 6-trough/10 compartment dividers, from a front height of 90 mm	Ident. No.	040 ○
	50228...	⑤ Ribbed rubber mat	Ident. No.	075 ●
AQUARADO	50228...	⑥ Set with textured mat and 14 boxes from front height 60 mm	Ident. No.	082 ●
AQUARADO	50228...	⑦ Set with textured mat and 11 boxes from front height 90 mm	Ident. No.	086 ●
AQUARADO	50228...	Set with textured mat and 11 boxes, from a front height of 90 mm	Ident. No.	090 ●

= Prod. Gr. 502

ANKE = Prod. Gr. 502

AQUARADO = Prod. Gr. 581

ATORN® Hard foam inserts, equipped with high-quality ATORN tools

Width 490 mm, depth 265 mm, for ANKE VS series heavy-duty workbenches

Application:

For flexible and modular equipping of drawers from the ANKE workbenches series V (no. 50201; 50202; 50203; 50236; 50284).

Execution:

- Two-tone foam inserts made of polyethylene (PE) equipped with tool assortments
- Closed cells provide resistance against most oils and chemicals
- The PE foam is lightweight, resistant, durable, odour-neutral and safe for foodstuffs
- One tool insert fills half of the useful area of a drawer with internal dimensions 500 x 540 mm
- Two tool inserts fill the entire useful area of a drawer with internal dimensions 500 x 540 mm

Advantage:

- For clear order and protected storage of tools in the drawers
- Precisely dimensioned cut-outs and a contrast colour (blue) means that missing tools can be spotted at a glance, avoiding any loss of tools
- Expensive tools will be kept safe and protected in the insert

Technical data:

- Depth: 265 mm
- Width: 490 mm
- Height: 30 mm
- Material: PE - Polyethylene
- Colour of top hard foam inlay: Black
- Colour of bottom hard foam inlay: Blue



Ident. No. 405



Ident. No. 420



Ident. No. 425



Ident. No. 430



Ident. No. 435



Ident. No. 440

Composition of set	Suitable for drawer	50537... Ident. No.
1 ATORN combination spanner width a.f. 6/7/8/9/10/11/12/13/14/15/16/17/18/19/20/21/22/24 mm	90 mm	405 ●
ATORN hexagonal angle screwdriver 9 pieces, 1 ATORN slotted screwdriver 5.5 x 100/6.5 x 125/8 x 150 mm, 1 ATORN Phillips screwdriver PH 1/PH 2/PH 3/PZ 1/PZ 2	60 mm	420 ●
1 ATORN slotted screwdriver VDE 2.5 x 75/3.5 x 100/4 x 100/5.5 x 125, 1 ATORN Phillips screwdriver VDE PH 0/PH 1/PH 2/PZ 0/PZ 1/PZ 2, ATORN wire-stripping tool, WIHA voltage tester	60 mm	425 ●
1 ATORN TORX screwdriver T 6/T 7/T 8/T 9/T 10/T 15/T 20/T 25/T 27/T 30/T 40, ATORN angled screwdriver 8 pieces T 9-T 40 with ball head	60 mm	430 ●

Composition of set	Suitable for drawer	50537... Ident. No.
1 ATORN round-nose pliers 160 mm ATORN triple pliers 160 mm, ATORN side-cutters 165 mm, ATORN combination pliers 180 mm, ATORN snipe nose pliers 200 mm, ATORN end cutting nippers 200 mm, ATORN water pump pliers VDE 250 mm	60 mm	435 ●
1 ATORN round-nose pliers VDE 160 mm, ATORN snipe nose pliers VDE 200 mm straight and bent, ATORN combination pliers VDE 180 mm, ATORN side cutters VDE 160 mm, ATORN water pump pliers VDE 250 mm, ATORN wire stripping pliers VDE 160 mm	60 mm	440 ●

Prod. Gr. 547

ATORN® Hard foam inserts, equipped with high-quality ATORN tools

Width 490 mm, depth 265 mm, for ANKE VS series heavy-duty workbenches

Technical data:

- Depth: 265 mm
- Width: 490 mm
- Height: 30 mm

- Material: PE - Polyethylene
- Colour of top hard foam inlay: Black
- Colour of bottom hard foam inlay: Blue



Ident. No. 445



Ident. No. 450



Ident. No. 460



Ident. No. 470



Ident. No. 475



Ident. No. 490

Composition of set	Suitable for drawer	50537... Ident. No.
1 ATORN circlip pliers J0/J1/J2/J11/J21/A0/A1/A2/A11/A21	60 mm	445 ●
ORION key files 100 mm cut 2, 6 pieces, DICK files 200 mm cut 2, 5 pieces, ORION file brush 115 x 40 mm	60 mm	450 ●
1 ATORN machinist's hammer 500 g, ATORN carbide marking needle 150 mm, ORION flat chisel 200 mm, ORION chisel set 6 pcs., ORION pin punch set 6 pcs., ORION drift punch 1-5 mm, ORION centre punch 120 x 10 mm, GEDORE protective cover for 0.5 kg hammer	90 mm	460 ●
1 ATORN pocket tape measure 3 m, ATORN triangular hollow-ground scraper 150 mm, ORION knife 165 mm, ORION all-purpose shears 180 mm, ORION saw bow 255 mm, saw blades 12 pieces, TICOM metal marker white, telescopic mirror Ø 50 mm, telescopic pick-up magnet retention force 3 kg, LED hand-held lamp Turbo (without batteries)	60 mm	470 ●
ATORN vernier calliper 150 mm, ATORN external micrometer 0-25 mm, ATORN straight edge 125 mm, ATORN back square 100 x 70 mm, ATORN knife-edge square 75 x 50 mm, ATORN spirit level length 400 mm, ORION spring divider 125 mm, ORION Feeler gauges 20 sheets 0.05-1.00 mm, ORION scale spring steel 300 mm, ORION protractor 120 x 150 mm, ORION marking needle 160 x 5 mm	90 mm	475 ●
ATORN socket wrench set 1/2" and 1/4", 35 pieces, ATORN Bitbox 32 pieces	60 mm	490 ●

Prod. Gr. 547



VG series group workbenches

With solid beech panel, 50 mm thick

Design:

- Worktop in solid beech, plate thickness 50 mm, sandable, glued structure, special interlinking, thus extremely robust and with almost unlimited durability.
- Base cabinets made of robust welded sheet steel.
- Total load capacity 1000 kg with evenly distributed load
- Can be individually fitted with drawers and doors. A 30 mm grid system enables the installation of drawers with a front height of 60–360 mm and doors with a front height of 360, 540 and 720 mm.
- Drawers with 100% full extension. 100 kg load capacity and individual drawer locking.

Delivery: Drawer cabinets and worktops not fitted. Installation service on request.



Example with drawing holder, panels, energy panel and cover panel

Standard features:

Max. load-bearing capacity	Drawers with 100% full extension	Load capacity 100 kg per drawer	Individual drawer locking: only one drawer can be opened at a time	Drawers with perforated floors and slotted walls for individual partitioning	Aluminium handle strips with inscription tapes and PVC protective profile	Central lock, incl. 2 keys	

Powder-coated surface: Body RAL 7035 light grey with fronts available in RAL 5010 gentian blue or RAL 7016 anthracite grey

Choose your preferred colour (no extra charge) for products with this logo:



RAL 1015	RAL 2004	RAL 3002	RAL 3020	RAL 5010	RAL 5012	RAL 5014	RAL 5015	RAL 6011	RAL 7035	RAL 9010
light ivory	pure orange	carmine red	traffic red	gentian blue	light blue	pigeon blue	sky blue	reseda green	light grey	pure white

Colours may be subject to printing-related differences; the original colours according to RAL are definitive.



Group workbench, hexagonal

Solid beech, 6 extra-narrow undercounter cabinets each with 4 drawers with partial extension and 1 door

Application:

Many different combinations and configurations in line with operational requirements. The space-saving and clearly-arranged nature of group workbenches means that they allow workplaces to be tailored to the task at hand and optimum working procedures.

Execution:

- Workbench top panel, hexagonal, edge length 1350 mm, 50 mm thick
- 2 workbench panels of solid beechwood, made from glued bars, dove-tailed, sanded and coated with natural varnish, connected with tongue and groove system and clamping elements
- 6 HK sheet steel undercounter cabinets

Delivery:

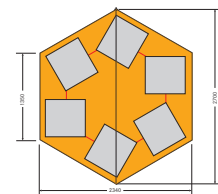
Unassembled without power housing or cover panel. Assembly service on request.

Notes:

Accessories such as power housing, cover panel or covers deliverable on request. For suitable ATORN tool inlays for drawers see under no. 50537 700-711.

Technical data:

- Version: Hexagon
- Material of the worktop: Solid beech
- Working height: 850 mm
- Plate length: 2340 mm
- Panel depth: 2700 mm
- Board thickness: 50 mm
- Number of drawers: 24 PCS
- Drawer front height: 6 x 60 mm | 12 x 90 mm | 6 x 120 mm
- Draw width (inner dimension): 300 mm
- Drawer depth (inner dimension): 600 mm
- Pullout type: Partial extension
- Load-carrying capacity per drawer: 100 kg
- Drawer surface: 0.18 m²
- With single pull-out safety brake: Yes
- Load-carrying capacity: 1000 kg
- Central locking: Yes
- Secondary locking: No
- Lock type: DOM® locking system
- Surface: Powder-coated



	Body colour	Colour of front		
50236...	Light grey RAL 7035	Gentian blue RAL 5010	Ident. No.	106
50236...	Light grey RAL 7035	Anthracite grey RAL 7016	Ident. No.	107

Prod. Gr. 5BC

**Power supply panel**

For group workbench 602/606 VG – hexagonal

Application:

For supplying power directly to a group workbench.

Delivery:

Unwired, incl. cover panel

Execution:

- Equipped on each side with: 1 x CEE plug 16 A 400 V with cover, 5-pin, 1 x Schuko socket with cover, 2-pin + E10/16 A 230 V, 1 x quick-release coupling for compressed air
- With multiplex beechwood cover panel

Technical data:

- Material: Sheet steel
- Colour: Light grey RAL 7035



50236...

Ident. No.

226



Prod. Gr. 502

**Drawer insert materials for ANKE VG series group workbenches**

Compartment dividers and compartment rails made from sheet steel

Application:

For inserting in drawers of ANKE workbenches series V.

Execution:

- Made of sheet steel

Ident. No. 724-730
1/2 divisionIdent. No. 749-755
1/3 divisionIdent. No. 774-780
1/4 divisionIdent. No. 799-805
1/2-1/4 division

		For drawer front height (mm)	For min./max. drawer front height	Number of compartments (PCS)		
50228...	1/2 split	60		8	Ident. No.	724 ○
50228...	1/3 split	60		12	Ident. No.	749 ○
50228...	1/4 split	60		16	Ident. No.	774 ○
50228...	1/2-1/4 split	60		12	Ident. No.	799 ○
50228...	1/2 split		90-150 mm	8	Ident. No.	725 ○
50228...	1/3 split		90-150 mm	12	Ident. No.	750 ○
50228...	1/4 split		90-150 mm	16	Ident. No.	775 ○
50228...	1/2-1/4 split		90-150 mm	12	Ident. No.	800 ○
50228...	1/2 split		180-360 mm	8	Ident. No.	730 ○
50228...	1/3 split		180-360 mm	12	Ident. No.	755 ○
50228...	1/4 split		180-360 mm	16	Ident. No.	780 ○
50228...	1/2-1/4 split		180-360 mm	12	Ident. No.	805 ○

Prod. Gr. 502

Drawer insert materials for ANKE VG series group workbenches

For individual drawer division

Application:

For customised fitting and partitioning of individual drawers.

- Ident. No. 082-090: AQUARADO organisation system consisting of textured mat and boxes

Execution:

- Suitable for drawer internal dimensions: Width x depth 500 x 540 mm
- Ident. No. 011-040: Can be used from a front height of 90 mm

Technical data:

- Width: 500 mm
- Depth: 540 mm

Ident. No. 011
① Plastic compartment insertIdent. No. 032
② 5-trough insert made of plastic with 10 compartment dividersIdent. No. 040
③ 6-trough/10 compartment dividers, from front height of 90 mmIdent. No. 075
⑤ Ribbed rubber matIdent. No. 082
⑥ Set with textured mat and 14 boxes, from front height 60 mmIdent. No. 086
⑦ Set with textured mat and 11 boxes, from front height 90 mm



Ident. No. 090

⑧ Set with textured mat and 11 boxes, from front height 90 mm

	50228...	Anti-slip mat	Ident. No.	002 ●
	50228...	① Plastic insert with 8 compartments, from a front height of 90 mm	Ident. No.	011 ●
	50228...	② 5-trough/10 compartment dividers, from a front height of 90 mm	Ident. No.	032 ○
	50228...	③ 6-trough/10 compartment dividers, from a front height of 90 mm	Ident. No.	040 ○
	50228...	⑤ Ribbed rubber mat	Ident. No.	075 ●
AQURADO	50228...	⑥ Set with textured mat and 14 boxes from front height 60 mm	Ident. No.	082 ●
AQURADO	50228...	⑦ Set with textured mat and 11 boxes from front height 90 mm	Ident. No.	086 ●
AQURADO	50228...	Set with textured mat and 11 boxes, from a front height of 90 mm	Ident. No.	090 ●

= Prod. Gr. 502

ANKE = Prod. Gr. 502

AQURADO = Prod. Gr. 581

ATORN® Hard foam inserts, equipped with high-quality ATORN tools

Width 490 mm, depth 265 mm, for ANKE VG series group workbenches

Application:

For flexible and modular equipping of drawers from the ANKE workbenches series V (no. 50201; 50202; 50203; 50236; 50284).

Execution:

- Two-tone foam inserts made of polyethylene (PE) equipped with tool assortments
- Closed cells provide resistance against most oils and chemicals
- The PE foam is lightweight, resistant, durable, odour-neutral and safe for foodstuffs
- One tool insert fills half of the useful area of a drawer with internal dimensions 500 x 540 mm
- Two tool inserts fill the entire useful area of a drawer with internal dimensions 500 x 540 mm

Advantage:

- For clear order and protected storage of tools in the drawers
- Precisely dimensioned cut-outs and a contrast colour (blue) means that missing tools can be spotted at a glance, avoiding any loss of tools
- Expensive tools will be kept safe and protected in the insert

Technical data:

- Depth: 265 mm
- Width: 490 mm
- Height: 30 mm
- Material: PE - Polyethylene
- Colour of top hard foam inlay: Black
- Colour of bottom hard foam inlay: Blue



Ident. No. 405



Ident. No. 420



Ident. No. 425



Ident. No. 430



Ident. No. 435



Ident. No. 440

Composition of set	Suitable for drawer	50537... Ident. No.
1 ATORN combination spanner width a.f. 6/7/8/9/10/11/12/13/14/15/16/17/18/19/20/21/22/24 mm	90 mm	405 ●
ATORN hexagonal angle screwdriver 9 pieces, 1 ATORN slotted screwdriver 5.5 x 100/6.5 x 125/8 x 150 mm, 1 ATORN Phillips screwdriver PH 1/PH 2/PH 3/PZ 1/PZ 2	60 mm	420 ●
1 ATORN slotted screwdriver VDE 2.5 x 75/3.5 x 100/4 x 100/5.5 x 125, 1 ATORN Phillips screwdriver VDE PH 0/PH 1/PH 2/PZ 0/PZ 1/PZ 2, ATORN wire-stripping tool, WIHA voltage tester	60 mm	425 ●

Composition of set	Suitable for drawer	50537... Ident. No.	
1 ATORN TORX screwdriver T 6/T 7/T 8/T 9/T 10/T 15/T 20/T 25/T 27/T 30/T 40, ATORN angled screwdriver 8 pieces T 9-T 40 with ball head	60 mm	430	●
1 ATORN round-nose pliers 160 mm, ATORN triple pliers 160 mm, ATORN side-cutters 165 mm, ATORN combination pliers 180 mm, ATORN snipe nose pliers 200 mm, ATORN end cutting nippers 200 mm, ATORN water pump pliers VDE 250 mm	60 mm	435	●
1 ATORN round-nose pliers VDE 160 mm, ATORN snipe nose pliers VDE 200 mm straight and bent, ATORN combination pliers VDE 180 mm, ATORN side cutters VDE 160 mm, ATORN water pump pliers VDE 250 mm, ATORN wire stripping pliers VDE 160 mm	60 mm	440	●

Prod. Gr. 547

ATORN® Hard foam inserts, equipped with high-quality ATORN tools

Width 490 mm, depth 265 mm, for ANKE VG series group workbenches

Technical data:

- Depth: 265 mm
- Width: 490 mm
- Height: 30 mm

- Material: PE - Polyethylene
- Colour of top hard foam inlay: Black
- Colour of bottom hard foam inlay: Blue



Ident. No. 445



Ident. No. 450



Ident. No. 460



Ident. No. 470



Ident. No. 475



Ident. No. 490

Composition of set	Suitable for drawer	50537... Ident. No.	
1 ATORN circlip pliers J0/J1/J2/J11/J21/A0/A1/A2/A11/A21	60 mm	445	●
ORION key files 100 mm cut 2, 6 pieces, DICK files 200 mm cut 2, 5 pieces, ORION file brush 115 x 40 mm	60 mm	450	●
1 ATORN machinist's hammer 500 g, ATORN carbide marking needle 150 mm, ORION flat chisel 200 mm, ORION chisel set 6 pcs., ORION pin punch set 6 pcs., ORION drift punch 1-5 mm, ORION centre punch 120 x 10 mm, GEDORE protective cover for 0.5 kg hammer	90 mm	460	●
1 ATORN pocket tape measure 3 m, ATORN triangular hollow-ground scraper 150 mm, ORION knife 165 mm, ORION all-purpose shears 180 mm, ORION saw bow 255 mm, saw blades 12 pieces, TICOM metal marker white, telescopic mirror Ø 50 mm, telescopic pick-up magnet retention force 3 kg, LED hand-held lamp Turbo (without batteries)	60 mm	470	●
ATORN vernier calliper 150 mm, ATORN external micrometer 0-25 mm, ATORN straight edge 125 mm, ATORN back square 100 x 70 mm, ATORN knife-edge square 75 x 50 mm, ATORN spirit level length 400 mm, ORION spring divider 125 mm, ORION Feeler gauges 20 sheets 0.05-1.00 mm, ORION scale spring steel 300 mm, ORION protractor 120 x 150 mm, ORION marking needle 160 x 5 mm	90 mm	475	●
ATORN socket wrench set 1/2" and 1/4", 35 pieces, ATORN Bitbox 32 pieces	60 mm	490	●

Prod. Gr. 547

ANKE Workbench top panel, 50 mm thick

Solid beech panel

Execution:

- Air-dried beech bars subjected to additional treatment during the drying process
- Each bar specially interlocked, dove-tailed, glued, sanded and oiled
- Available in one piece as continuous panels up to a length of 4050 mm and a depth of 1300 mm

Advantage:

- Robust, resistant and highly durable
- With lateral toothed profile ensuring up to 60% greater gluing surface and thus optimum stability

- Can be sanded down again and again
- The high quality of ANKE workbench top panels ensures long service life

Notes:

For accessories such as beechwood anti-roll-off bar for panel see under no. 50233 403-428.

Technical data:

- Material of the worktop: Solid beech
- Board thickness: 50 mm



Toothing on the panel

Plate length (mm)	1250	1500	2000	2500	3000	4050	1500	2000
Panel depth (mm)	700	700	700	700	700	700	800	800
50233...	010	015	020	025	030	036	040	045
Ident. No.	○	○	○	○	○	○	○	○

Prod. Gr. 502

Accessories for		50233 010	50233 015	50233 020	50233 025	50233 030	50233 036	50233 040
50233... Anti-roll off edging made of multiplex beechwood For workbench top panel	Ident. No.	403 ○	405 ○	410 ○	415 ○	420 ○	428 ○	405 ○
Accessories for		50233 045						
50233... Anti-roll off edging made of multiplex beechwood For workbench top panel	Ident. No.	410 ○						

**Workbench top panel, 40 mm thick****Beech multiplex panel****Execution:**

- High-quality beech veneer, multi-layered, waterproof-glued
- Polished and UV painted surface
- Largely oil and grease resistant, semi-resistant against acids and solvents
- Clear varnished
- Longitudinal edges chamfered

Technical data:

- Material of the worktop: Multiplex beech
- Panel depth: 700 mm
- Board thickness: 40 mm



Beech multiplex

Plate length (mm)		1500	2000
50233...	Ident. No.	515	520
		●	●

Prod. Gr. 504

**Soft PVC top, transparent****Application:**

Protects the work surface from soiling and damage.

Notes:

Custom-cut and on-the-roll products up to max. 20 m available upon request

Execution:

- Free from DOP, cadmium and silicone
- Fire protection class B2 in line with DIN 4102

Technical data:

- Colour: Transparent
- Min. temperature resistance: -30 °C
- Max. temperature resistance: 60 °C



Length (mm)		1500	2000	1500	2000	1500	2000
Depth (mm)		700	700	750	750	800	800
Total thickness (mm)		3	3	3	3	3	3
50233...	Ident. No.	905	910	915	920	928	930
		●	●	●	●	●	●

Prod. Gr. 504

**power strips for workbenches****version:**

housing made of sheet steel, height 170 mm, depth 90 mm, length 800-4050 mm. for fitting with components according to illustration.

delivery:

- unwired
- for length 2800 mm: two-piece; for length 4050 mm: three-piece



- ① illuminated one/off switch 2-pin
- ② Schuko socket with cap 2-pin + E 10/16 A 230 V 50 Hz
- ③ CEE socket 16 A 400 V/50 Hz with cap 5-pin
- ④ circuit breaker 1-pin B 16 A
- ⑤ circuit breaker 3-pin C 16 A
- ⑥ screw fuse element Neozed 3-pin without fuse
- ⑦ fault current circuit breaker (FI) 25 A 30 mA 230 V
- ⑦ fault current circuit breaker (FI) 25 A 30 mA 400 V
- ⑧ emergency stop button without key
- ⑨ emergency stop button with key
- ⑩ pole terminal 4 mm black
- ⑪ earthing socket yellow/green 4 mm
- ⑫ earthing socket 4 mm red
- ⑬ compressed air quick-release coupling

➡ individual fitting of power strip on request.

**U profile base**

Made from steel, 680 mm deep

**Application:**

For the assembly of workbenches with undercounter cabinets.

Execution:

- Made of stable U profile steel 80 x 50 x 2 mm

Technical data:

- Version: U section steel
- Height: 800 mm
- Depth: 680 mm
- Material: Steel
- Surface: Powder-coated

Colour		Light grey RAL 7035	Optional
50232...	Ident. No.	344 ○	346 ○

Prod. Gr. 503

**U-profile base, height adjustable**

Made from steel, 680 mm deep

**Application:**

For the assembly of workbenches with undercounter cabinets.

Execution:

- Made of stable U profile steel 80 x 50 x 2 mm
- Height-adjustable in 25 mm increments, screwed connections

Technical data:

- Version: U section steel
- Min./max. height: 600-950 mm
- Depth: 680 mm
- Material: Steel
- Surface: Powder-coated

Colour		Light grey RAL 7035	Optional
50232...	Ident. No.	340 ○	342 ○

Prod. Gr. 503

**Cross strut**

For mounting between 2 bases

**Application:**

For stabilizing workbenches 1500 and 2000 mm wide, mounted between 2 bases.

Execution:

- Adjustable length, incl. fastening materials

Advantage:

- to increase the stability of workbenches

Technical data:

- Material: Sheet steel

Colour		Light grey RAL 7035	Optional
50232...	Ident. No.	352 ○	354 ○

Prod. Gr. 503





Workbench drawer blocks, height 410 mm, width 570 mm

Drawers with option of partial or full extension

Application:

For the individual assembly of a workbench with workbench panel and base.

Execution:

- Solidly welded steel sheet construction
- Drawers with high-quality Delrin rollers
- Central locking with rotary cylinder security lock, incl. 2 keys
- Suitable insert material for drawers, see from no. 50485 060-265 and from no. 50537 610-695
- Other equipment options available at extra cost: SOFT-CLOSE for drawers, see no. 50392 005, ELECTRONIC CODE combination lock, see no. 50392 010

Notes:

To order customised hard foam inserts suitable for these drawers, please use the following clear internal dimensions: Width 435 mm, depth 585 mm.

Technical data:

- With single pull-out safety brake: Yes
- Drawer surface: 0.27 m²
- Drawer with slots: Yes
- Perforated drawer base: Yes
- Central locking: Yes
- Lock type: DOM® locking system
- Material: Sheet steel
- Surface: Powder-coated

FH mm	KH mm
150	100
180	100



Ident. No. 503

FH mm	KH mm
90	70
120	100
120	100



Ident. No. 513

FH mm	KH mm
60	40
60	40
90	70
120	100



Ident. No. 523

Number of drawers (PCS)	2	3	4
Drawer front height	1 x 150 mm 1 x 180 mm	1 x 90 mm 2 x 120 mm	2 x 60 mm 1 x 90 mm 1 x 120 mm
Pullout type	Full extension	Full extension	Full extension
Load-carrying capacity per drawer (kg)	70	70	70
Draw width (inner dimension) (mm)	450	450	450
Drawer depth (inner dimension) (mm)	600	600	600
Height (mm)	410	410	410
Width (mm)	570	570	570
Depth (mm)	680	680	680
	Body colour	Colour of front	
50211...	Light grey RAL 7035	Anthracite grey RAL 7016	Ident. No.
			503 ○
			513 ○
			523 ○

Prod. Gr. 5BC

**MORE THAN 60,000 PRODUCTS
FOR MAXIMUM INNOVATION.**

WE HAVE WHAT IT TAKES.

For a complete range of products that meet the toughest demands, visit www.iconridge.com

**Workbench undercounter cabinets, height 800 mm, width 570 mm****Drawers with choice of partial or full extension****Application:**

For the individual assembly of a workbench with workbench panel and base.

Execution:

- Solidly welded steel sheet construction
- **Ident. No. 203–263:**
 - With built-in individual drawer pull-out locking
 - Drawers with high-quality Delrin rollers
 - Drawers with slots all around for inserting compartment rails and dividers
 - Drawers with slotted sheet steel bottom for attaching and fixing individual items
 - Drawers flush with cabinet housing, no protruding grip handles
 - Aluminium grip handles with paper and cellophane strips and lateral cover caps
 - Central locking with rotary cylinder security lock, incl. 2 keys

- Suitable insert material for drawers, see no. 50485 060-265 and no. 50537 610-695. Other equipment options available at extra cost: SOFT-CLOSE for drawers, see no. 50392 005, ELECTRONIC CODE combination lock, see no. 50392 010

- **Ident. No. 243–271:** With door, door opening angle 180°

- **Ident. No. 271:** With 2 height-adjustable shelves behind the door

Notes:

Ident. No. 203–263: To order customised hard foam inserts suitable for these drawers, please use the following clear internal dimensions: Width 435 mm, depth 585 mm.

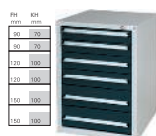
Front height = FH, cabinet height = KH, see illustrations.

Technical data:

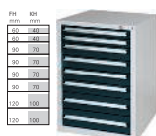
- Lock type: DOM® locking system
- Material: Sheet steel
- Surface: Powder-coated



Ident. No. 203



Ident. No. 213



Ident. No. 223



Ident. No. 233



Ident. No. 243



Ident. No. 253



Ident. No. 263



Ident. No. 271

Number of drawers (PCS)				5	6	8	10	1	2
Pullout type				Full extension	Full extension	Full extension	Full extension	Full extension	Full extension
Load-carrying capacity per drawer (kg)				70	70	70	70	70	70
Draw width (inner dimension) (mm)				450	450	450	450	450	450
Drawer depth (inner dimension) (mm)				600	600	600	600	600	600
Number of doors (PCS)				-	-	-	-	1	1
With doors				No	No	No	No	Yes	Yes
Height (mm)				800	800	800	800	800	800
Width (mm)				570	570	570	570	570	570
Depth (mm)				680	680	680	680	680	680
With single pull-out safety brake				Yes	Yes	Yes	Yes	Yes	Yes
Drawer surface (m ²)				0.27	0.27	0.27	0.27	0.27	0.27
Drawer with slots				Yes	Yes	Yes	Yes	Yes	Yes
Perforated drawer base				Yes	Yes	Yes	Yes	Yes	Yes
Central locking				Yes	Yes	Yes	Yes	No	No
	Body colour	Colour of front							
50212...	Light grey RAL 7035	Anthracite grey RAL 7016	Ident. No.	203	213	223	233	243	253

Number of drawers (PCS)				4	-
Pullout type				Full extension	-
Load-carrying capacity per drawer (kg)				70	-
Draw width (inner dimension) (mm)				450	-
Drawer depth (inner dimension) (mm)				600	-
Number of doors (PCS)				1	1
With doors				Yes	Yes
Height (mm)				800	800
Width (mm)				570	570
Depth (mm)				680	680
With single pull-out safety brake				Yes	-
Drawer surface (m²)				0.27	-
Drawer with slots				Yes	No
Perforated drawer base				Yes	-
Central locking				No	Yes
50212...	Body colour	Colour of front	Ident. No.	263	271
	Light grey RAL 7035	Anthracite grey RAL 7016		o	o

Prod. Gr. 5BC

Assortment of fittings for drawers

For HK undercounter cabinets and drawer blocks

Application:

For customised fitting and partitioning of individual drawers.

Execution:

- Suitable for internal drawer dimensions: Width x depth 450 x 600 mm
- **Ident. No. 210:** Oil-resistant
- **Ident. No. 250–265:** with textured mat and boxes



Ident. No. 060
① Trough plates



Ident. No. 090
② Container



Ident. No. 095–100
③ Spare part boxes



Ident. No. 110–130
④ Compartment divisions



Ident. No. 200
⑤ Anti-slip mat



Ident. No. 210
⑥ Ribbed rubber mat



Ident. No. 250
⑦ AQUARADO set with textured mat and 10 boxes, 24/48 mm high (without tools)



Ident. No. 260
⑧ AQUARADO set with textured mat and 7 boxes, 48 mm high (without tools)



Ident. No. 265
⑩ AQUARADO set with textured mat and 14 boxes, 24 mm high (without tools)

For drawer cabinet height (mm)				40	70	100
	50485...	① Trough trays	Ident. No.	060 ○	-	-
	50485...	② Containers	Ident. No.	090 ○	-	-
	50485...	③ Spare part boxes	Ident. No.	095 ○	100 ○	-
	50485...	④ Compartment dividers	Ident. No.	110 ○	120 ○	130 ○
	50485...	⑤ Non-slip mat	Ident. No.	200 ●	-	-
	50485...	⑥ Ribbed rubber mat	Ident. No.	210 ●	-	-
AQUARADO	50485...	⑦ Set with textured mat and 10 boxes	Ident. No.	-	250 ●	-
AQUARADO	50485...	⑧ Set with textured mat and 7 boxes	Ident. No.	-	260 ●	-
AQUARADO	50485...	⑩ Set with textured mat and 14 boxes	Ident. No.	265 ●	-	-

HK = Prod. Gr. 503

AQUARADO = Prod. Gr. 581

Drawer fittings sets

For HK workbench undercounter cabinets, no. 50300 010-038

Application:

For customised fitting and partitioning of individual drawers in drawer cabinet, system 700 S.

Execution:

- Suitable for drawer internal dimensions: Width x depth 600 x 600 mm
- **Ident. No. 210:** Oil-resistant
- **Ident. No. 250–256:** with textured mat and boxes



Ident. No. 100
① Trough plates



Ident. No. 110–120
② Spare part boxes



Ident. No. 130–140
③ Compartment divisions



Ident. No. 150–160
④ Compartment divisions



Ident. No. 170–180
⑤ Compartment divisions



Ident. No. 190–200
⑥ Compartment divisions



Ident. No. 210
⑦ Ribbed rubber mat



Ident. No. 220
⑧ Non-slip mat



Ident. No. 250
⑨ AQRADO set with textured mat and 13 boxes, 24 and 48 mm high (without tools)



Ident. No. 252
⑩ AQRADO set with textured mat and 15 boxes, 48 mm high



Ident. No. 254
⑪ AQRADO set with textured mat and 20 boxes, 24 mm high



Ident. No. 256
⑫ AQRADO set with textured mat and 22 boxes, 24 mm high

For drawer cabinet height (mm)			40	70	100
	50481...	① Trough plates	Ident. No. 100	-	-
	50481...	② Spare part boxes	Ident. No. 110	120	-
	50481...	③ Compartment divisions	Ident. No. -	130	140
	50481...	④ Compartment divisions	Ident. No. -	150	160
	50481...	⑤ Compartment divisions	Ident. No. -	170	180
	50481...	⑥ Compartment divisions	Ident. No. -	190	200
	50481...	Ribbed rubber mat	Ident. No. 210	-	-
	50481...	⑧ Anti-slip mat	Ident. No. 220	-	-
AQRADO	50481...	⑨ Set with textured mat and 13 boxes	Ident. No. -	250	-
AQRADO	50481...	⑩ Set with textured mat and 15 boxes	Ident. No. -	252	-
AQRADO	50481...	⑪ Set with textured mat and 20 boxes	Ident. No. 254	-	-
AQRADO	50481...	⑫ Set with textured mat and 22 boxes	Ident. No. 256	-	-

HK = Prod. Gr. 503
AQRADO = Prod. Gr. 581

ATORN® Hard foam inserts, equipped with high-quality ATORN tools

Width 293 mm, length 587 mm, for HK workbench undercounter cabinets, nos. 50300 010-038

Application:

For flexible and modular equipping of drawers from the HK drawer cabinet system 700 S and 700 B.

Execution:

- Two-tone polyethylene (PE) foam inserts equipped with tool assortments
- Closed-cell foam is resistant to most oils and chemicals
- The PE foam is lightweight, resistant, durable, odour-neutral and even food safe
- One tool insert fills half of the usable area of drawers with internal dimensions 600 x 600 mm
- Two tool inserts fill the entire usable area of drawers with internal dimensions 600 x 600 mm
- Three tool inserts fill the entire usable area of drawers with internal dimensions 900 x 600 mm

Advantage:

- Clearly arranged, organised and protected storage of tools in the drawers
- Accurately fitting cut-outs in contrasting blue make it easy to spot when tools are missing and help to prevent loss of tools
- Expensive tools can be stored securely and safely in the insert

Technical data:

- Depth: 587 mm
- Width: 293 mm
- Height: 30 mm
- Material: PE - Polyethylene
- Colour of top hard foam inlay: Black
- Colour of bottom hard foam inlay: Blue



Ident. No. 700



Ident. No. 701



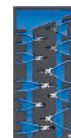
Ident. No. 702



Ident. No. 703



Ident. No. 704



Ident. No. 705



Composition of set	Suitable for drawer	50537... Ident. No.	
1 each of ATORN combination spanner sizes 6/7/8/9/10/11/12/13/14/15/16/17/18/19/20/21/22/24/27/30 mm	90 mm	700	●
1 each of ATORN slotted screwdriver 5.5 x 100/6.5 x 125/8.0 x 150 mm, 1 each of ATORN Phillips screwdriver PH 1/PH 2/PZ 1/PZ 2, 1 each of ATORN screwdriver T 6/T 7/T 8/T 9/T 10/T 15/T 20/T 25/T 27/T 30	60 mm	701	●
1 each of ATORN slotted screwdriver VDE 2.5 x 75/3.5 x 100/4 x 100/5.5 x 125, 1 each of ATORN Phillips screwdriver VDE PH 0/PH 1/PH 2/PZ 0/PZ 1/PZ 2, ATORN wire-stripping tool, WIHA voltage tester	60 mm	702	●
1 each of ATORN round-nose pliers 160 mm, ATORN tripe pliers 160 mm, ATORN side cutters 165 mm, ATORN combination pliers 180 mm, ATORN snipe nose pliers 200 mm, ATORN end cutting nippers 200 mm, ATORN water pump pliers VDE 250 mm	60 mm	703	●
1 each of ATORN round-nose pliers VDE 160 mm, ATORN snipe nose pliers VDE 200 mm straight and curved, ATORN combination pliers VDE 180 mm, ATORN side cutters VDE 160 mm, ATORN water pump pliers VDE 250 mm, ATORN wire stripping pliers VDE 160 mm	60 mm	704	●
1 each of ATORN circlip pliers J0/J1/J2/J11/J21/A0/A1/A2/A11/A21	60 mm	705	●

Prod. Gr. 547

ATORN® Hard foam inserts, equipped with high-quality ATORN tools Width 293 mm, length 587 mm, for HK workbench undercounter cabinets, nos. 50300 010-038

Application:

For flexible and modular equipping of drawers from the HK drawer cabinet system 700 S and 700 B.

Execution:

- Two-tone polyethylene (PE) foam inserts equipped with tool assortments
- Closed-cell foam is resistant to most oils and chemicals
- The PE foam is lightweight, resistant, durable, odour-neutral and even food safe
- One tool insert fills half of the usable area of drawers with internal dimensions 600 x 600 mm
- Two tool inserts fill the entire usable area of drawers with internal dimensions 600 x 600 mm
- Three tool inserts fill the entire usable area of drawers with internal dimensions 900 x 600 mm

Advantage:

- Clearly arranged, organised and protected storage of tools in the drawers
- Accurately fitting cut-outs in contrasting blue make it easy to spot when tools are missing and help to prevent loss of tools
- Expensive tools can be stored securely and safely in the insert

Technical data:

- Depth: 587 mm
- Width: 293 mm
- Height: 30 mm
- Material: PE - Polyethylene
- Colour of top hard foam inlay: Black
- Colour of bottom hard foam inlay: Blue



Ident. No. 706



Ident. No. 707



Ident. No. 708



Ident. No. 709



Ident. No. 710



Ident. No. 711



Composition of set	Suitable for drawer	50537... Ident. No.	
ORION key files 100 mm cut 2, 6 pieces, DICK files 200 mm cut 2, 5 pieces, ORION file brush 115 x 40 mm	60 mm	706	●
1 each of: ATORN machinist's hammer 500 g, ATORN recoil-free soft-face hammer 30 mm, ORION 6-piece chisel in holder, ORION 6-piece pin punch set, ATORN cemented carbide scriber 150 mm, ATORN bow saw spare blades 300 mm 24 teeth, ATORN aluminium saw bow 300 mm, ORION knife with snap-off blade 9 mm	90 mm	707	●
1 each of ATORN vernier callipers 150 mm, ATORN pocket tape measure 3 m, ATORN light metal ruler 300 mm, ATORN try square 100 x 70 mm, 9 ATORN hexagonal screwdrivers, ATORN straight edge 125 mm, ORION knife 145 mm, ORION all-purpose shears 180 mm, TICOM white metal marker, Turbo LED hand-held lamp (not including batteries)	60 mm	708	●
1 each of ATORN pocket tape measure 3 m, ATORN triangular low-ground scraper 150 mm, ORION knife 165 mm, ORION all-purpose shears 180 mm, ORION saw bow 255 mm, 12 saw blades, TICOM white metal marker, telescopic mirror Ø 50 mm, telescopic pick-up magnet with 3 kg retention force, Turbo LED hand-held lamp (not including batteries)	60 mm	709	●
1 each of ATORN vernier callipers 150 mm, ATORN micrometer 0-25 mm, ATORN straight edge 125 mm, ATORN try square 100 x 70 mm, ATORN knife-edge square 75 x 50 mm, ATORN spirit level length 400 mm, ORION spring divider 125 mm, ORION feeler gauges 20 blades 0.05-1.00 mm, ORION spring steel ruler 300 mm, ORION protractor 120 x 150 mm, ORION scriber 160 x 5 mm	90 mm	710	●
ATORN 1/2" and 1/4" socket wrench set, 35 pieces, ATORN bit box, 32 pieces	60 mm	711	●

Prod. Gr. 547

CLIP-O-FLEX Undercounter cabinets with CLIP-O-FLEX hook-on system

Height 800 mm, including 6 CLIP-O-FLEX trays

Application:

Thanks to the flexible and modular CLIP-O-FLEX system, the cabinet can be optimally designed and adapted to the individual work sequences in production, assembly, development, training and further education. Your work/storage area or your organisation system are fixed with one clip and at the same time with the highest level of horizontal and vertical flexibility.

Execution:

- Solidly welded steel sheet construction
- Undercounter cabinet equipped with one door, height 540 mm and 2 drawers, front height 90 mm
- **Ident. No. 150–152:** With fixed support brackets incl. 6 CLIP-O-FLEX trays with hook-in brackets 0/40/80°
- **Ident. No. 154–156:** With convenient pull-out system incl. 6 CLIP-O-FLEX trays with hook-in brackets 0/40/80°

Advantage:

- CLIP-O-FLEX: flexible hook-on system with only one hooking movement
- Ergonomic workplace design thanks to different inclines and can be relocated horizontally
- Quick access to work equipment, very clear overview
- Quick retrofitting, exchange and replacement
- Best mobility, less walking required

Notes:

The spacing between the individual trays in the trolley is max. 52 mm. Please consider the amount of tool protrusion (max. 22 mm) when using trays equipped with ATORN tool inlays (height 30 mm). Trays of tools with greater protrusion must be inserted into the first storage level.

Technical data:

- Draw width (inner dimension): 365 mm
- Drawer depth (inner dimension): 294 mm
- Pullout type: Full extension
- Load-carrying capacity per drawer: 35 kg
- With single pull-out safety brake: No
- With doors: Yes
- Door height: 540 mm
- Central locking: Yes
- Lock type: Cylinder lock
- Material: Sheet steel
- Surface: Powder-coated



Incl. CLIP-O-FLEX trays



Version with support angles



Example application with workbench and mounting system



Version with convenient pull-out system

Version	With support brackets	With support brackets	With pull-out system	With pull-out system
Door stop	Left	Right	Left	Right
Number of cabinets 260 x 345 x 30 mm (PCS)	6	6	6	6
Load-carrying capacity per shelf board (kg)	10	10	10	10
Number of drawers (PCS)	2	2	2	2
Drawer front height	2 x 90 mm	2 x 90 mm	2 x 90 mm	2 x 90 mm
Height (mm)	800	800	800	800
Width (mm)	474	474	474	474
Depth (mm)	405	405	405	405
Body colour	White aluminium RAL 9006	Jet black RAL 9005		
Colour of front				
Ident. No.	150 ○	152 ○	154 ○	156 ○

Prod. Gr. 586



Workstation systems – the concept for your success

We establish competitive benefits through flexibility!

Keeping ahead of the competition means producing ever faster, more efficiently and more intelligently. We give you the flexibility you require. Many companies offer 3D project planning; HAHN+KOLB CONCEPT offers more and thinks a few steps ahead. We get your plant equipment ready for the economic challenges of the present and the future. Talk to us if you wish to incorporate modern concepts (lean production, just-in-time etc.) into your new plant equipment. We specialise in increasing the value added during production. Our product range enables you to make your processes simpler, more secure and faster. And you can do this time and again because our products are flexible enough to adapt to new demands. This unlocks unprecedented potential for lean production and continuous improvement.

We provide a complete range in the sector:

- Modular workstations
- Aluminium profile connection systems
- Transfer and transport systems
- Storage systems
- Handling technology
- Custom designs

From project planning to final assembly, experienced specialists are here to help. You will receive your individual system as a complete, ready-to-go solution or as a finished, self-assembly kit.

first Key – ready-to-go complete solution

You make the specifications – we do the rest! After on-site analysis we take care of planning optimum production processes and material flows. You will receive a customised layout with detailed calculations of efficiency and profitability. We will compile a complete offer encompassing planning, delivery and installation. You will receive a ready-to-go solution and can start working with it immediately.

second Kit – ready-to-assemble kit

Let us deal with the planning and cutting – the rest is a breeze! We design production processes and workstations individually to suit your specifications and needs. You will receive a detailed design drawing of your assembly kit. Assembly is very easy with clear assembly instructions and colour-coded products.

3. Components – components and accessories

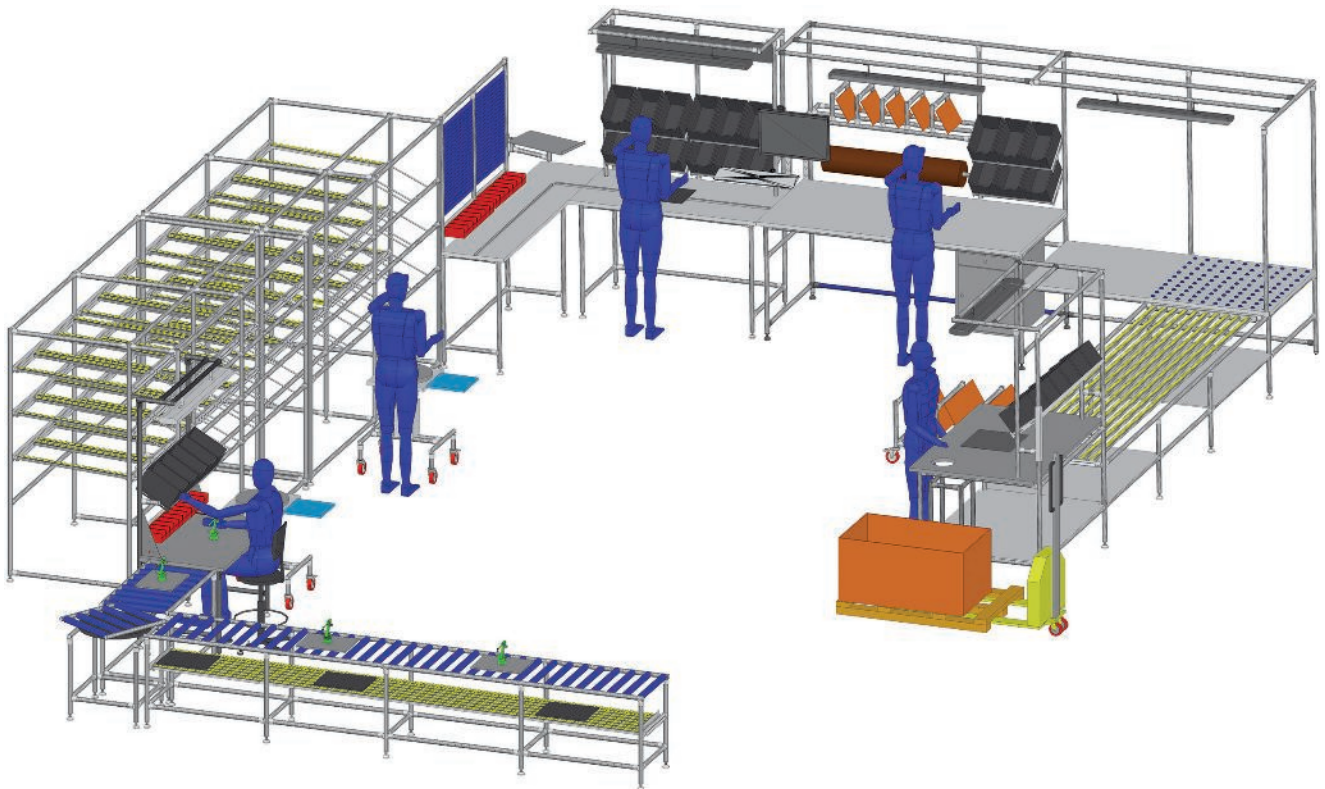
Do it yourself! We can supply all components and a wide selection of accessories. Our fast and reliable delivery is your advantage. It enables you to respond quickly and flexibly to new demands.

Our service:

We plan custom systems for you tailored to your needs and requirements.

Ask for our planning and installation experts. We provide on-site consultation and a planning service.

Further information and advice on request. Please contact us.



➡ Please ask for our separate brochure.



Modular workstations – examples

Version:

Modular and flexible plug-in system made of sheet steel, support strut grid for clipping in elements and accessories, perforated metal plate walls with square perforations 10 x 10 mm, distance from hole centre to hole centre 38 mm

Application:

Thanks to the flexible and modular system, workstations in production, assembly, development, training and further education can be optimally designed and adapted to the individual work sequences.

Advantages:

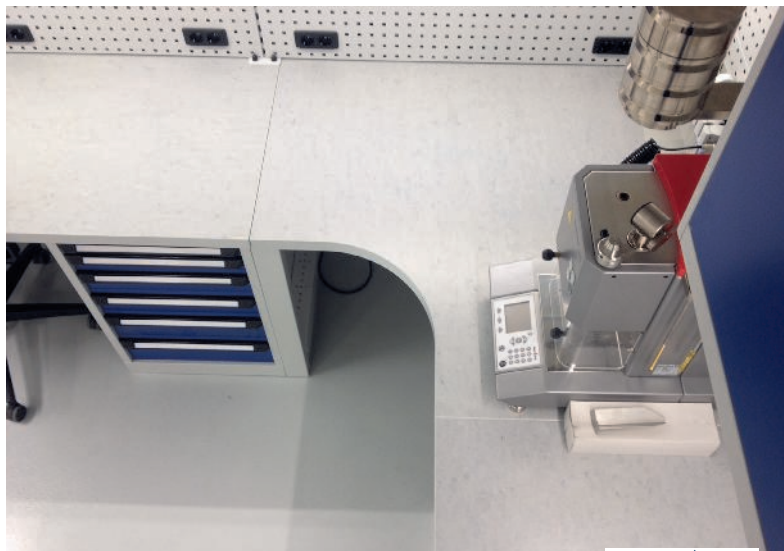
- Flexible system through simple plug-in assembly of the elements
- Convenient adjustment of workstation to individual requirements and needs
- Various combination options thanks to extensive accessories

Colour: RAL 7035, light grey, powder-coated.

Other colours available on request.

Note:

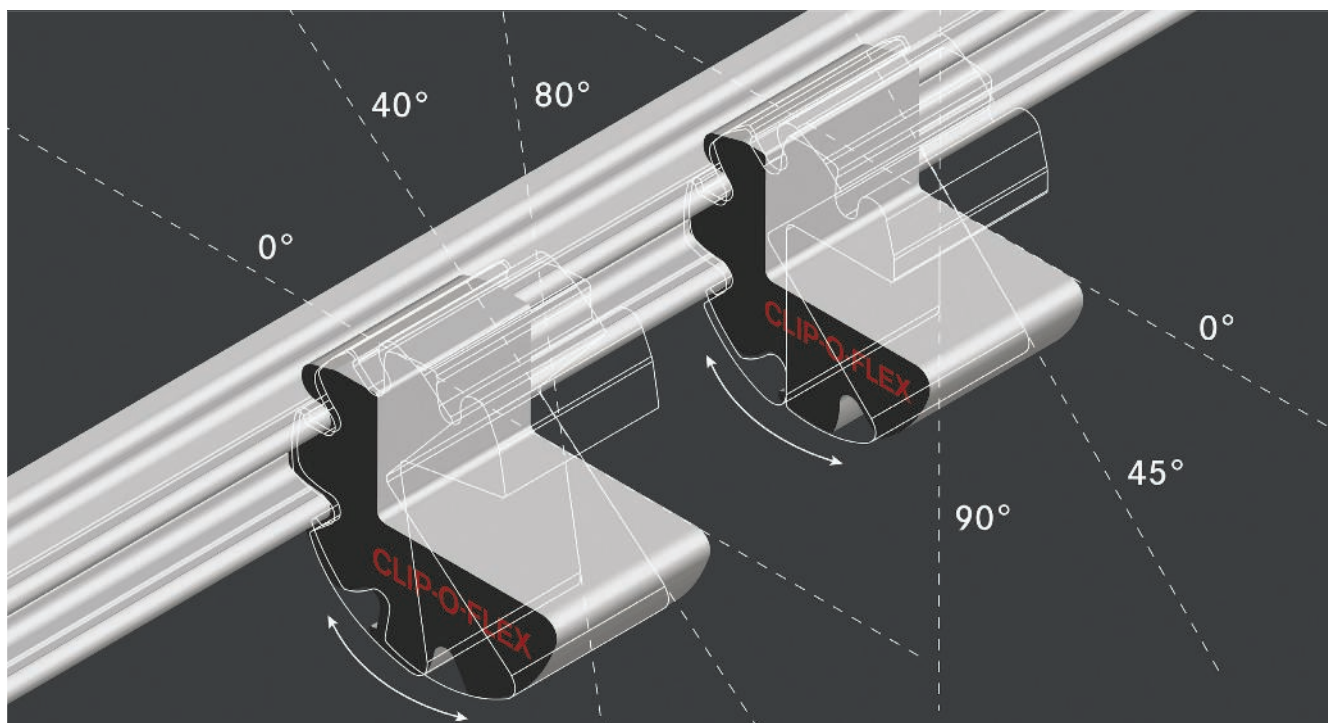
Workbench construction system for other lengths of table available on request.





The flexible hook-on system – WORLD PREMIERE

CLIP-O-FLEX



CLIP-O-FLEX **fixes** your work/storage area or your organisation system using only **one clip** yet with the highest level of **horizontal** and **vertical flexibility**!

WHAT IS CLIP-O-FLEX?

- **CLIP-O-FLEX** is the most flexible clip-in system on the market. It enables flexible handling of many different work surfaces, organisation systems with small parts or tool assortments.
- **CLIP-O-FLEX** consists of an ingenious rail profile into which the elements can be clipped at various angles from 0–90°. The profiles can be easily moved within the rails. In this way, **CLIP-O-FLEX** offers maximum horizontal and vertical flexibility.
- The support rail is made of aluminium and is very light and yet durable. Trays, shelves or your existing organisation system can be fixed in the rail and removed again with just one clip-in movement.
- The flexible system enables tools, trays, shelves etc. to always be attached at an ergonomic height and at an ergonomic angle. Workstations can be customised for any requirements in a flash using **CLIP-O-FLEX**. Once a task is complete, tools are tidied away again in the blink of an eye.
- The aluminium support rail required to create a **CLIP-O-FLEX** workstation is available in various lengths. Sheet steel trays equipped with clip-in profiles are also available. The clip-in profiled are also available with pre-drilled holes for rivets or with M5 threaded holes for bolting.
- The **CLIP-O-FLEX** series also comprises pre-assembled products such as workbenches and trolleys with rails mounted around their circumference.
- The assembled trays correspond exactly to the dimensions of our standard ATORN hard foam inserts no. 50537 505-591, which are ideal for use with **CLIP-O-FLEX**.

INCREASED PRODUCTIVITY THANKS TO CLIP-O-FLEX

- Quick access to work equipment
- Flexible and ergonomic workplace design
- Very clear overview
- Quick exchange and replacement
- Fast retooling
- Maximum mobility
- Less walking required
- Keep the work surface free, easy clean-up after the work process (Clean Desk and 5S principle)



The CLIP-O-FLEX profile can be mounted at different angles

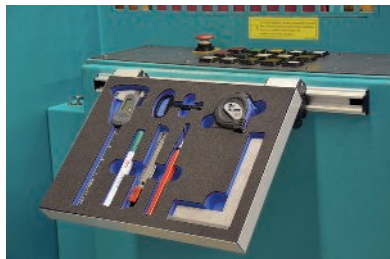


Tools can be ergonomically provided, the work surface remains clear.

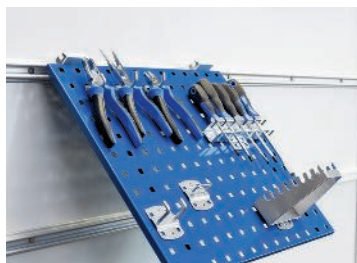
The tray can be fixed into the rail with only one anchoring in movement and detached again:



Example applications:



Combinable with different materials:





Workbench construction for table lengths 1500 mm and 2000 mm

Design:

Modular and flexible plug-in system made of sheet steel, support elements with locking positions for hooking on elements and accessories, perforated sheet metal walls with square perforation 10 x 10 mm, distance from hole centre to hole centre 38 mm

Application:

Thanks to the flexible and modular system, workstations in production, assembly, development, training and further education can be optimally designed and adapted to the individual work sequences.

Advantages:

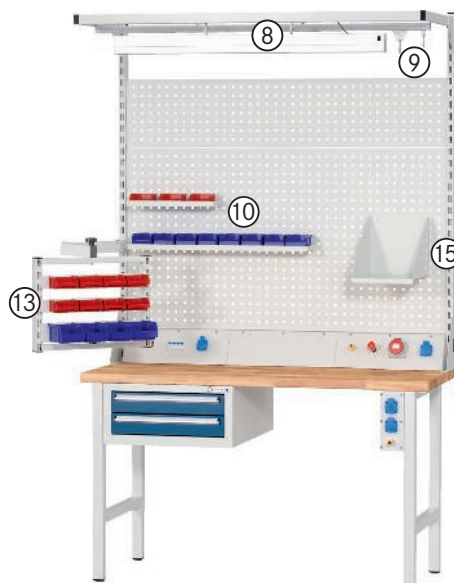
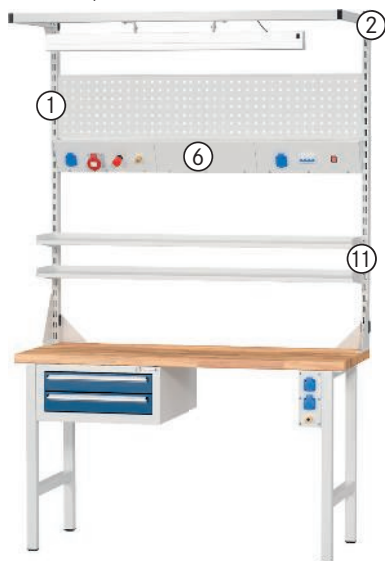
- Flexible system through simple plug-in assembly of the elements
- Convenient adjustment of workstation to individual requirements and needs
- Various combination options thanks to extensive accessories

colour: RAL 7035, light grey, powder-coated.

Other colours available on request.

Note:

Workbench construction system for other lengths of table available on request.



- ① Support strut for workbench construction, see from no. 50239 104
- ② Boom supporting arm, see no. 50239 121
- ③ Perforated metal plate wall, see from no. 50239 270
- ④ Power block for base, see no. 50239 135
- ⑤ Power strip, see from no. 50239 136
- ⑥ Power strip with adjustable height, see from no. 50239 131
- ⑦ LED work lamp for boom, no. 50239 200
- ⑧ Equipment rail for boom, from no. 50239 192
- ⑨ Carriage for equipment rails, from no. 50239 197

- ⑩ Shelf for perforated metal walls, see from no. 50239 204
- ⑪ Shelf for support strut, see from no. 50239 222
- ⑫ Hook-in bar for perforated metal plate walls with 4 boxes size 4 and 5, see from no. 50239 240
- ⑬ Base frame, 360 ° rotatable with joint swivel arm, can be equipped from both sides, see from no. 50239 260
- ⑭ Drawing holder incl. 8 clip magnets, see from no. 50239 340
- ⑮ Binder module for perforated metal plate walls, see no. 50239 320



Workbench construction — example applications

Version:

Modular and flexible plug-in system made of sheet steel, support strut grid for clipping in elements and accessories, perforated metal plate walls with square perforations 10 x 10 mm, distance from hole centre to hole centre 38 mm

Application:

Thanks to the flexible and modular system, workstations in production, assembly, development, training and further education can be optimally designed and adapted to the individual work sequences.

Advantages:

- Flexible system through simple plug-in assembly of the elements
- Convenient adjustment of workstation to individual requirements and needs
- Various combination options thanks to extensive accessories

Colour: RAL 7035, light grey, powder-coated.

Other colours available on request.

Note:

Workbench construction system for other lengths of table available on request.

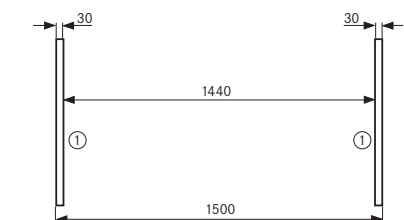


Possible field combinations

for workbench construction system — table lengths 1500 and 2000 mm

Note:

The flexible system enables 5 bay combinations to be created in the workstation widths 1500 and 2000 mm. Perforated metal plate walls, hook-in bars for easy-view storage bins and shelves are available, depending on the bay combination.

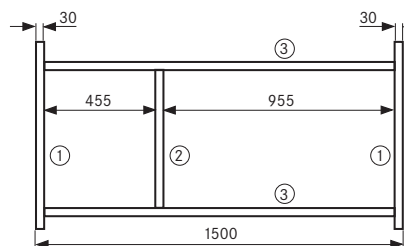


Workstation system 1500 mm
without cross connectors or intermediate supports

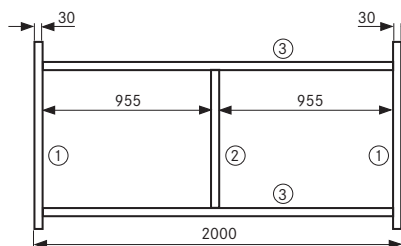


Workstation system 2000 mm
without cross connectors or intermediate supports

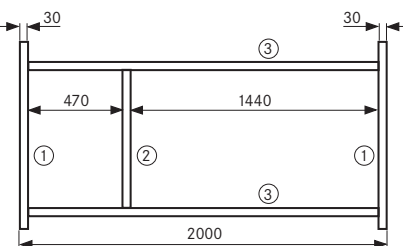
- ① Support strut, see no. 50239104-115
- ② Intermediate support, see no. 50239099
- ③ Cross connector see no. 50239101-102



Workstation system 1500 mm
with cross connectors and intermediate supports



Workstation system 2000 mm
with cross connectors and intermediate supports



Workstation system 2000 mm
with cross connectors and intermediate supports

Support struts for workbench construction

In different heights

Application:

For mounting on the workbench panel via bolts vertically and horizontally, sturdy construction. Basic structure for workbench assembly system.

Execution:

- Made from sturdy rectangular steel profile 50 x 30 mm
- With slotted perforations on the front and interior side for holding module components

Delivery:

1 pair, incl. assembly materials

Technical data:

- Material: Sheet steel
- Colour: Light grey RAL 7035



Example application

Height (mm)		470	820	1270	1520
Depth (mm)		30	30	30	30
50239...	Ident. No.	104	108	112	115
		○	○	○	○

Prod. Gr. 504

Workbench top panels, length mm 1500 and 2000 mm, 40 mm thick

Made from either beech multiplex or solid beech

Execution:

▪ Ident. No. 530–532:

- High-quality beech veneer, multi-layered, waterproof-glued
- Polished and UV painted surface
- Largely oil and grease resistant, semi-resistant against acids and solvents
- Clear varnished
- Longitudinal edges chamfered

▪ Ident. No. 540–542:

- Made from high-quality glued red beech bars
- Polished and oiled

Technical data:

- Board thickness: 40 mm



Ident. No. 530–532
Beech multiplex



Ident. No. 540–542
Solid beech

Material of the worktop	Multiplex beech	Multiplex beech	Solid beech	Solid beech
Plate length (mm)	1500	2000	1500	2000
Panel depth (mm)	750	750	700	700
50233...	Ident. No.	530	532	540
		○	○	○

Prod. Gr. 504

Intermediate strut For workbench construction

Application:

For achieving different bay combinations when assembling workbenches.

Technical data:

- Height: 960 mm
- Material: Steel
- Colour: Light grey RAL 7035

Execution:

- Made from stable rectangular steel profile 50 x 30 mm with slotted perforation

50239...	Ident. No.	099
		○

Prod. Gr. 504



Cross connectors for support struts For workbench construction

Application:

For increased stability or individual division of the workbench assembly surface.

Technical data:

- Material: Steel
- Colour: Light grey RAL 7035

Execution:

- Made from stable rectangular steel profile tubing 50 x 40 mm

Length (mm)		1440	1940
50239...	Ident. No.	101	102
		○	○

Prod. Gr. 504



Boom supporting arms For workbench construction

Application:

For installation on support elements (also wall stands or bases), to accommodate equipment rails and lighting systems.

Delivery:

in pairs, incl. installation material

Technical data:

- Depth: 625 mm
- Material: Steel
- Colour: Light grey RAL 7035

Execution:

- Made of rectangular steel profile 40 x 20 x 2 mm
- Cover caps on the profile ends

50239...	Ident. No.	120
		○

Prod. Gr. 504



Example: Support arms with HK lamp no. 50239 163 and crossbar no. 50239 183

Equipment rails For workbench construction

Application:

For accommodating trolleys with devices, mounting on cantilever support arms.

Technical data:

- Material: Steel
- Colour: Light grey RAL 7035

Execution:

- Made from stable C profile steel 30 x 30 x 2 mm
- Accessories: Trolley for equipment rail, see no. 50239 196

Width (mm)		1440	1940
50239...	Ident. No.	190	191
		○	○

Prod. Gr. 504



Example application

Carriage for equipment rails

Application:

For accommodating spring balancers and assembly aids, for the installation of equipment rails.

Technical data:

- Load-carrying capacity: 30 kg
- Surface: Galvanised

Execution:

- Stable design
- Incl. 4 rollers and end stops

50239...	Ident. No.	196
		○

Prod. Gr. 504



Wall stands

In different heights

Application:

For wall-mounted installation of a workstation system.

Execution:

- Made from sturdy rectangular steel profile 50 x 30 mm
- With slotted perforations on the front and interior side for holding module components

Delivery:

Individual, incl. installation material

Notes:

2 bases are required for 1 bay (as shown in the application example)

Technical data:

- Material: Sheet steel
- Colour: Light grey RAL 7035



Example application for wall structure (2 units required)

Height (mm)		470	820	1520	1820	2320
50239...	Ident. No.	091	092	093	094	095
		○	○	○	○	○

Prod. Gr. 504

Foot stand

In different heights

Application:

For free-standing installation of a workstation system.

Execution:

- Made from sturdy rectangular steel profile 50 x 30 mm
- With slotted perforations on the front and interior side for holding module components
- Incl. profile end caps

Delivery:

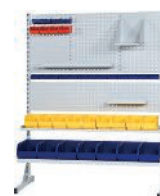
Individual, incl. installation material

Notes:

2 bases are required for 1 bay (as shown in the application example)

Technical data:

- Material: Sheet steel
- Colour: Light grey RAL 7035



Example application (2 units required)

Height (mm)		1520	1820
50239...	Ident. No.	096	097
		○	○

Prod. Gr. 504



HK workstation lamps

with the latest LED technology - art. 50239160-165

the elegant and high-quality housing of the HK workstation lamps conceals the latest LED technology. the optimally coordinated high-tech components ensure continual, bright and dazzle-free illumination with minimal power consumption. activation delays, flickering light and disposing of toxic lamps are a thing of the past. with flexible and rapid mounting, the workstation lamps offer versatile application options. with enormous luminosity, even smaller lights are excellent for large work surfaces. the 504 mm variant, for instance, is sufficient to effectively illuminate work surfaces of 1.50 m in length, the 1004 mm variant work surfaces of 2 m in length. three variants are available: on/off switch, additionally with dimmer or operation with radio button.



maintenance-free thanks to LED technology



enormous light intensity with minimal energy consumption



long service life: >60,000 h glare-free illumination of the workplace



quick and flexible installation



extremely sturdy housing

available in three variants:



ref. no. 160 + 163 with on/off switch



ref. no. 161 + 164 with on/off switch; the lamp can also be dimmed using the turning knob



ref. no. 163 + 165, light can be switched on/off and dimmed via a button (ref. no. 166) using a radio system

available in two lengths:



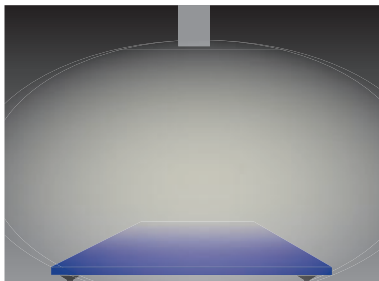


HK workstation lamps

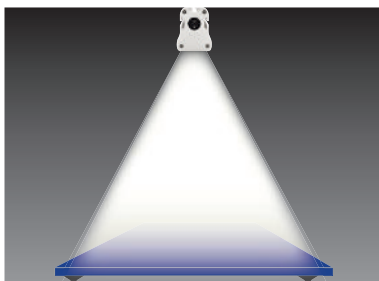
small lamps for large work surfaces - art. 50239160-165

in contrast to conventional products, the HK workstation lamps have a narrow light beam and only illuminate the work surface. the lights not only have the extremely bright illumination but are also absolutely glare-free.

conventional workstation lamp

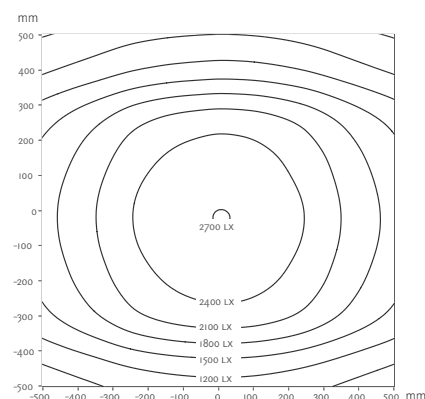
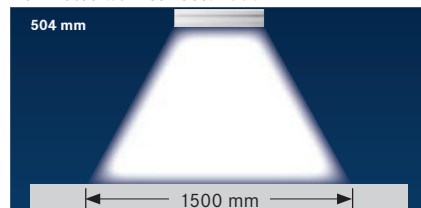


HK workstation lamp



light length 504 mm

illuminated work surface: 1500 mm



Light length 504 mm

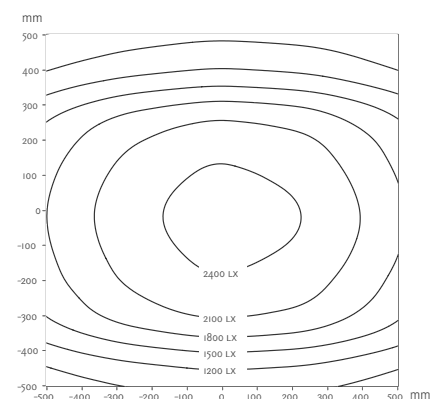
measurement distance 100 cm

E v max 2,700 lx

E v average 1,820 lx

light length 1004 mm

illuminated work surface: 2000 mm



Light length 1004 mm

measurement distance 100 cm

E v max 2,530 lx

E v average 1,778 lx



LED workstation lamp

Options of 504 mm and 1004 mm

Execution:

- High-quality, robust aluminium housing in elegant design
- Acrylic glass protective cover
- 3-m grey connection wire
- Maintenance-free LED technology
- more variants with a beam angle of 100° available on request

Advantage:

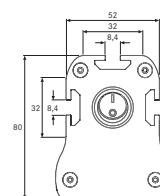
- Ultra-modern LED technology for low consumption
- Optimum heat transfer for long service life
- Continuous, bright and dazzle-free illumination of work surfaces
- Versatile application thanks to simple and flexible mounting on aluminium strut profiles with integrated T-slots (8 mm)
- Ref. no. 162 and 165:** Using the wireless version, workstation lighting can be switched on and off or dimmed via a wireless button (required accessories no. 50239 166). This allows any number of lights to be controlled using a single button or various light clusters to be assigned to different buttons. The minimum range inside buildings is 30 m.

Notes:

Required accessories for version with wireless button ref. no. 162 and 165: For operation, please order wireless button no. 50239 166 (see accessories) along with light.

Technical data:

- Power rating: 40 W
- Energy efficiency class: A++
- Colour of light: Neutral white
- Colour temperature: 4000 K
- IP protection class: IP 50
- Protection class: Protection class I/protective grounding
- Max. nominal voltage: 264 V/AC
- Min. nominal voltage: 90
- Min./max. nominal voltage: 90 / 264 V/AC
- Connection type: Schuko plug
- Cable length: 3 m
- Swivelling: No
- Material of the housing: Aluminium
- Colour: Traffic white RAL 9016
- Surface: Powder-coated
- Angle of reflected beam: 60° x 90°



Cross-section

Length (mm)		504	1004
Illuminated area in 1 m distance		1500 x 1200 mm	2000 x 1200 mm
Luminous flux (lm)		4800	5400
50239...	Operation		
	On-off switch	Ident. No. 160	163

Prod. Gr. 586

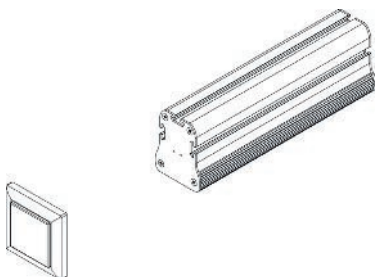
Source: Hahn+Kolb Werkzeuge GmbH
Technical data subject to change.
Availability subject to country specific rules and regulations.

www.iconridge.com

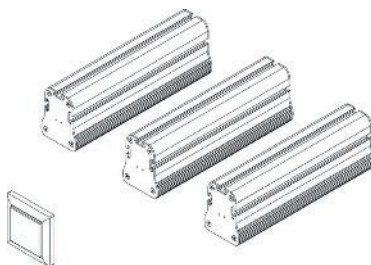


HK workstation lamps

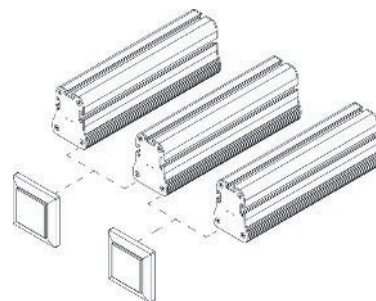
Variant with radio button - art. 50239162 + 165



the workstation lamp can be switched on/off and dimmed with a push button via radio control.



any number of individual workstation lamps can be controlled via a single button.



various buttons can be allocated to different lights and light clusters.



Boom supporting arms

For workbench construction

Application:

For installation on support elements (also wall stands or bases), to accommodate equipment rails and lighting systems.

Execution:

- Made of rectangular steel profile 40 x 20 x 2 mm
- Cover caps on the profile ends

50239... | Ident. No. 120

Prod. Gr. 504

Delivery:

in pairs, incl. installation material

Technical data:

- Depth: 625 mm
- Material: Steel
- Colour: Light grey RAL 7035



Example: Support arms with HK lamp no. 50239 163 and crossbar no. 50239 183



Perforated metal plate walls for workbench construction

In different heights and widths

Application:

Ident. No. 128-130, 271-275: For accommodating shelves, hook-on rails for easy-view storage bins, folder modules and tool support elements or hooks.

Ident. No. 270: For accommodating shelves, hook-on rails for easy-view storage bins, binder modules and tool support elements or hooks.

Execution:

- Made from high-quality processed steel sheet, 1.5 mm thick, incl. grid
- Square perforation 10 x 10 mm
- Spacing between hole centres 38 mm, vertically and horizontally
- Hook-in brackets allow simple and screwless mounting between two support struts (also for wall stands or bases, base frames) or between one support strut and one intermediate strut
- **Ident. No. 270:** Suitable for insertion in base frame no. 50239 260-265

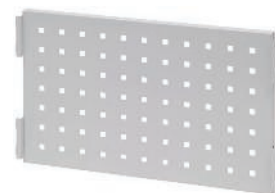
Notes:

Ident. No. 128-130, 271-275: For RASTERPLAN support elements and tool holders for inserting into perforated metal panel walls, see from no. 50638 300

Ident. No. 270: RASTERPLAN support elements and tool holders for inserting into perforated metal panel walls, see from no. 50638 300

Technical data:

- Punched-hole: 10 x 10 mm
- Material: Sheet steel
- Colour: Light grey RAL 7035



Width (mm)	455	455	470	470	955	955	1440	1940
Height (mm)	300	650	300	650	300	650	800	300
50239... Ident. No.	270	271	272	273	274	275	128	129
	o	o	o	o	o	o	o	o

Width (mm)	1940
Height (mm)	650
50239... Ident. No.	130
	o

Prod. Gr. 504

CLIP-O-FLEX Support rails, flat design

Application:

For attachment to the wall, workbench, trolley, workbench structure or perforated metal plate walls. As a holder for CLIP-O-FLEX insert profiles and trays.

Execution:

- Made of naturally anodised aluminium
- Pre-drilled, suitable for perforated metal plate walls with centre-to-centre distance 38 mm
- Incl. lateral (left- and right-hand) cover caps
- Total length = nominal length + 5 mm (cover caps)

Advantage:

- Elements can be inserted into the sophisticated rail profile in various angles from 0–90° using the insert profiles and trays no. 50237 091-106
- The profiles can be easily moved sideways within the rails

- A tray, storage compartment or shelf can be inserted into the rail or detached again with only one movement
- Optimum horizontal and vertical flexibility
- Ergonomic and flexible workplace design

Delivery:

Incl. lateral cover caps on left and right

Notes:

For trays to mount on rails, see no. 50237 101-106, for hook-in profiles see no. 50237 091-098/211-213

Technical data:

- Material: Aluminium
- Surface: Anodised

Length (mm)	500	700	750	800	990	1400	1500	2000
Width (mm)	38	38	38	38	38	38	38	38
Depth (mm)	20	20	20	20	20	20	20	20
Number of drill holes (PCS)	2	3	4	4	4	6	6	6
50237... Ident. No.	005	006	007	008	011	014	015	019

Prod. Gr. 586



CLIP-O-FLEX Longitudinal connector

For support rails no. 50237 005-019

Application:

For the connection of support rails.

Execution:

- Can be attached to support rails as an intermediate piece for rail extensions

Technical data:

- Number of pieces per packet: 1 PCS
- Colour: Black
- Material: Plastic

50237... Ident. No.	099
---------------------	-----

Prod. Gr. 586



CLIP-O-FLEX Plastic corner element

For support rails no. 50237 005-019

Application:

For attaching to the support rails for connecting two support rails when used at a 90° angle, for example on a workbench top panel.

Technical data:

- Number of pieces per packet: 2 PCS
- Colour: Black
- Material: Plastic

Delivery:

Packing unit 2 pieces

50237... Ident. No.	095
---------------------	-----

Prod. Gr. 586



CLIP-O-FLEX Hook-on profiles – angles of 0-90°

For support rails no. 50237 005-257

Application:

For attachment to CLIP-O-FLEX support rails; various materials can also be screwed, riveted or affixed.

Delivery:

1 pair = 2 pieces

Execution:

- Made of aluminium 54 mm wide, naturally oxidised
- With black cover caps, left- and right-hand side

Technical data:

- Material: Aluminium
- Surface: Anodised
- Number of pieces per packet: 2 PCS

Suspension angle	0° 40° 80°	0° 45° 90°	0° 40° 80°
Punched-hole	4 x 4.2 mm	4 x 4.2 mm	4 x M5
Load-carrying capacity (kg)	10	10	10
50237... Ident. No.	091	092	097

Prod. Gr. 586



CLIP-O-FLEX Safety catch

For insert profiles no. 50237 091-098

Application:

For the securing and fixed attachment of insert profiles or trays in the support rail, e.g. during transport with a trolley or a wheeled workbench

Execution:

- Can be placed on the insert profiles in the 0° position

Technical data:

- Colour: Red
- Material: Plastic



50237... | Ident. No. 089

Prod. Gr. 586

CLIP-O-FLEX Trays with MINI hook-on profiles – angles of 0-45°

For CLIP-O-FLEX support rails, no. 50237 005-257

Application:

For insertion in the CLIP-O-FLEX support rails at various angles, for mobile use and for flexible workplace design.

Execution:

- The two mounting profiles are mounted on the wide side

Advantage:

- Always have the right tool at hand when at work
- Tool inserts (no. 50537 505-580) can be placed into trays

Notes:

For CLIP-O-FLEX support rails, see no. 50237 005-019, suitable ATORN hard foam inserts fitted with tool assortments for dimensions W x D 260 x 345 mm, see from no. 50537 505-580

Technical data:

- Material: Sheet steel
- Colour: White aluminium RAL 9006
- Surface: Powder-coated



Example application

Width (mm)	345	520
Depth (mm)	260	345
Height (mm)	30	30
Suspension angle	0° 45°	0° 45°
Load-carrying capacity (kg)	10	10
50237... Ident. No.	105	106

Prod. Gr. 586

CLIP-O-FLEX Trays with hook-on profiles – angles of 0-90°

For CLIP-O-FLEX support rails, no. 50237 005-257

Application:

For insertion in the CLIP-O-FLEX support rails at various angles, for mobile use and for flexible workplace design.

Execution:

- The two mounting profiles are mounted on the wide side

Advantage:

- Always have the right tool at hand when at work
- Tool inserts (no. 50537 505-580) can be placed into trays

Notes:

For CLIP-O-FLEX support rails, see no. 50237 005-019, suitable ATORN hard foam inserts fitted with tool assortments for dimensions W x D 260 x 345 mm, see from no. 50537 505-580

Technical data:

- Material: Sheet steel
- Colour: White aluminium RAL 9006
- Surface: Powder-coated



Width (mm)	345	345	520	520
Depth (mm)	260	260	345	345
Height (mm)	30	30	30	30
Suspension angle	0° 40° 80°	0° 45° 90°	0° 40° 80°	0° 45° 90°
Load-carrying capacity (kg)	10	10	10	10
50237... Ident. No.	101	102	103	104

Prod. Gr. 586

CLIP-O-FLEX Handles

For CLIP-O-FLEX trays no. 50237 101-106

Application:

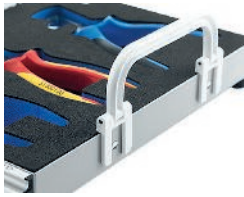
The handles can be used to carry CLIP-O-FLEX trays easily and conveniently

Delivery:

Packing unit 2 pieces

Technical data:

- Number of pieces per packet: 2 PCS
- Material: Plastic



Colour		White	Red	Black
50237...	Ident. No.	280	281	282
		●	●	●

Prod. Gr. 586

Shelf for perforated metal plate wall

In different widths

Application:

For hooking onto the perforated metal panel wall, suitable for use as a storage tray at the workstation.

Technical data:

- Depth: 145 mm
- Material: Sheet steel
- Colour: Light grey RAL 7035

Execution:

- Made from high-quality steel sheet 1 mm thick, folded

Width (mm)	400	810
Load-carrying capacity (kg)	8	12
50239...	Ident. No.	204
		○
		208
		○

Prod. Gr. 504



Example application

Shelf for support struts

Application:

For hooking onto two support struts (also wall stands or bases), suitable for use as a storage area at the workstation and for accommodating easy-view storage bins.

Notes:

Easy-view storage bins, see no. 50057 005-425 and no. 50638 810-837

Technical data:

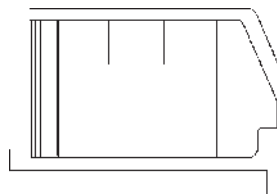
- Load-carrying capacity: 50 kg
- Material: Sheet steel
- Colour: Light grey RAL 7035

Execution:

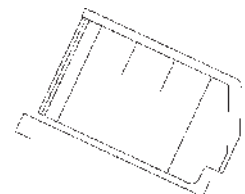
- Made from high-quality steel sheet 1 mm thick, folded
- Shelf with two hook-in brackets, can be hooked straight or slanted into the support struts



(Without easy-view storage bins)



Shelf mounted straight



Shelf mounted at an angle

Depth (mm)	235	235	235	330	330	330
Width (mm)	975	1460	1960	975	1460	1960
50239...	Ident. No.	222	223	224	225	233
		○	○	○	○	○
					234	
					○	○

Prod. Gr. 504

Hook-in rail for perforated metal plate wall

incl. Easy-view storage bins

Application:

For hooking onto perforated metal panel walls, for clear allocation and arrangement of small parts required at the workstation.

Technical data:

- Width: 420 mm
- Load-carrying capacity: 25 kg
- Material: Sheet steel
- Colour: Light grey RAL 7035

Execution:

- Rail made of sturdy, folded steel sheet 2 mm thick

Number of bins 85 x 105 x 45 mm (PCS)	-	4
Number of bins 160 x 105 x 75 mm (PCS)	4	-
Box colour	Blue	Red
50239...	Ident. No.	240
		○
		245
		○

Prod. Gr. 504





Hook-in rails for support struts

incl. Easy-view storage bins

Application:

For hooking between two support elements (also wall stands or bases), for clear allocation of small parts required at the workstation.

Execution:

- Rail made of sturdy, folded steel sheet 2 mm thick

Notes:

Hook-in rails ident. no. 280-285 fit base frame no. 50239 260-265

Technical data:

- Load-carrying capacity: 25 kg
- Material: Sheet steel
- Colour: Light grey RAL 7035



Ident. No. 246, 248, 250, 257, 280



Ident. No. 247, 249, 255, 259, 285

Width (mm)	455	455	470	470	955	955	1440	1440
Number of bins 85 x 105 x 45 mm (PCS)	-	4	-	4	-	9	-	13
Number of bins 160 x 105 x 75 mm (PCS)	4	-	4	-	9	-	13	-
Box colour	Blue	Red	Blue	Red	Blue	Red	Blue	Red
50239...	Ident. No. 280	285	246	247	248	249	250	255
	○	○	○	○	○	○	○	○

Width (mm)	1940	1940
Number of bins 85 x 105 x 45 mm (PCS)	-	17
Number of bins 160 x 105 x 75 mm (PCS)	17	-
Box colour	Blue	Red
50239...	Ident. No. 257	259
	○	○

Prod. Gr. 504



Power unit for base

Application:

For installation on the base, for supplying the workstation with power and compressed air.

Execution:

- Equipped with 2 Schuko sockets 230 V and 1 compressed air quick coupling

Delivery:

Not wired

Notes:

Customised fitting and residual current circuit breaker or recess for switch on request

Technical data:

- Height: 250 mm
- Width: 100 mm
- Depth: 100 mm
- Adjustable in height: No
- Colour: Light grey RAL 7035



50239...	Ident. No. 135
	○

Prod. Gr. 504



Power strip, height-adjustable

For bench widths 1500 mm and 2000 mm

Application:

For installation between support elements, for direct supply of power and compressed air to the workstation.

Execution:

- Height-adjustable between the support struts
- Ident. No. 151-152: With 2 Schuko sockets 230 V and 1 compressed-air quick-release coupling
- Ident. No. 155-156: With 1 Schuko socket 230 V, 1 CEE socket 400 V and 1 compressed air quick-release coupling

Delivery:

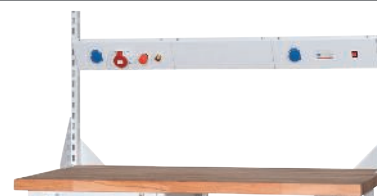
Not wired

Notes:

Customised power strip and residual current circuit breaker or recess for switch on request

Technical data:

- Adjustable in height: Yes
- Colour: Light grey RAL 7035



Height adjustable, individually equipped

Length (mm)		1940	1440
50239...	Ident. No.	151	152
		○	○
50239...	Ident. No.	155	156
		○	○

Prod. Gr. 504

**Power strip, fixed**

For bench widths 1500 mm and 2000 mm

Application:

For installation between support elements, for direct supply of power and compressed air to the workstation.

Execution:

- Can be hooked securely between the support struts
- Ident. No. 149–150:** With 2 Schuko sockets 230 V and 1 compressed-air quick-release coupling
- Ident. No. 153–154:** With 1 Schuko socket 230 V, 1 CEE socket 400 V and 1 compressed air quick-release coupling

Delivery:

Not wired

Notes:

Customised power strip and residual current circuit breaker or recess for switch on request

Technical data:

- Adjustable in height: No
- Colour: Light grey RAL 7035



Fixed, individually equipped

Length (mm)		1940	1440
50239...	2 x sockets 230 V and 1 x compressed air connection	Ident. No. 149 ○	Ident. No. 150 ○
	1 x socket 230 V, 1 x socket CEE 400 V and 1 x compressed air connection	Ident. No. 153 ○	Ident. No. 154 ○

Prod. Gr. 504

**Base frame incl. single- or double-hinged swivel arm, rotatable**

For hooking into support strut

Application:

For hooking into support struts to accommodate various modular components.

Execution:

- Base frame can be rotated around 360°
- Can be equipped on both sides
- Maximum load capacity 25 kg

Notes:

Accessories: Perforated metal panel wall, see no. 50239 270, hook-in bars incl. easy-view storage bins, see no. 50239 280-285, rails incl. tilting bins no. 50239 290-295

Technical data:

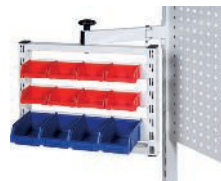
- Width: 520 mm
- Height: 400 mm
- Material: Sheet steel
- Colour: Light grey RAL 7035



Ident. No. 260
Ident. No. 260 with single-jointed swivel arm



Ident. No. 265
Ident. No. 265 with twin-jointed swivel arm



Example with hook-in bars incl. boxes



Example with perforated metal plate wall and shelves

50239...	With single-hinged swivel arm	Ident. No. 260 ○
50239...	With double-hinged swivel arm	Ident. No. 265 ○

Prod. Gr. 504

Accessories for		50239 260	50239 265
50239...	Perforated metal panel wall For hooking onto base frame, ident. no. 260-265,	Ident. No. 270 ○	Ident. No. 270 ○
50239...	Hook-in rails for support struts Incl. easy-view storage bins,	Ident. No. 280 ○ 285 ○	Ident. No. 280 ○ 285 ○
50239...	Hook-in rail for base frame, double-hinged incl. tilting bin, With 6 tilting bins	Ident. No. -	Ident. No. 290 ○
50239...	Hook-in rail for base frame, double-hinged incl. tilting bin, With 9 tilting bins	Ident. No. -	Ident. No. 295 ○

**Hook-on rail for base frame with 2-hinge swivel arm****incl. Tilting container****Application:**

For hooking into base frame with double-hinged swivel arm, no. 50239 265, for clear allocation and arrangement of small parts required at the workstation.

Technical data:

- Width: 600 mm
- Box colour: Transparent
- Load-carrying capacity: 25 kg
- Material: Sheet steel
- Colour: Light grey RAL 7035

Execution:

- Rail made of sturdy, folded steel sheet 2 mm thick
- Accessories: Base frame, see no. 50239 265

Number of bins 85 x 105 x 45 mm	-	9
Number of bins 160 x 105 x 75 mm	6	-
50239... With 6 tilting bins	Ident. No. 290	-
50239... With 9 tilting bins	Ident. No. -	295

Prod. Gr. 504

Accessories for		50239 290	50239 295
50239... Base frame with double-hinged swivel arm For hooking onto support struts, With double-hinged swivel arm	Ident. No.	265	265

**Storage tray for base frame no. 50239 265****For hooking into support strut****Application:**

Suitable as an additional storage possibility for required utensils.

Technical data:

- Width: 450 mm
- Depth: 305 mm
- Material: Sheet steel
- Colour: Light grey RAL 7035

Execution:

- Made of high-quality processed sheet steel, 2 mm thick
- Adjustable tilting from 0-45 °
- Incl. ribbed rubber mat

50239...	Ident. No. 302
-----------------	-----------------------

Prod. Gr. 504

Accessories for		50239 302
50239... Base frame with double-hinged swivel arm For hooking onto support struts, With double-hinged swivel arm	Ident. No.	265



Example with base frame no. 265

**Storage tray incl. Double-hinged swivel arm****For hooking into support strut****Application:**

For hooking onto support struts, suitable as tray compartment for tools and other utensils.

Technical data:

- Width: 450 mm
- Depth: 320 mm
- Material: Sheet steel
- Colour: Light grey RAL 7035

Execution:

- Made from high-quality processed, folded steel sheet
- Incl. ribbed rubber mat

50239...	Ident. No. 333
-----------------	-----------------------

Prod. Gr. 504

**Monitor and keyboard holder with mouse tray****Incl. double-hinged swivel arm****Application:**

For hooking onto support struts, to accommodate PC keyboard, mouse and TFT flat screens.

Technical data:

- Material: Sheet steel
- Colour: Light grey RAL 7035

Execution:

- Made from stable rectangular steel profile
- Incl. swivel joint for optimum positioning

50239...	Ident. No. 310
-----------------	-----------------------

Prod. Gr. 504



Example illustration



Screen holder incl. Double-hinged swivel arm

For hooking into support strut

Application:

For hooking onto support elements, to accommodate TFT flat screens, arbitrary slanting of the screen.

Technical data:

- Material: Sheet steel
- Colour: Light grey RAL 7035

Execution:

- Made from stable rectangular steel profile
- Incl. double-hinged swivel arm

50239...

Ident. No.

304



Prod. Gr. 504



Example illustration



Binder module

For perforated metal plate wall

Application:

Suitable for hooking onto perforated metal panel walls for binders or DIN A4 storage compartments.

Technical data:

- Width: 250 mm
- Depth: 300 mm
- Height: 250 mm
- Material: Sheet steel
- Colour: Light grey RAL 7035

Execution:

- Made from sturdy, folded sheet steel 1.2 mm thick
- Incl. notches on sides

50239...

Ident. No.

320



Prod. Gr. 504



Example applications



Universal holder

For workbench construction

Application:

For hooking onto support struts (also wall stands or bases), for holding work equipment, cans or drink bottles.

Execution:

- Made from high-quality processed plastic, universal fit

Technical data:

- Material: Plastic
- Colour: Black

50239...

Ident. No.

331



Prod. Gr. 504



Example application

Drawing holder for workbench construction

incl. 8 tilt-type magnets

Application:

For simple and screwless mounting by hooking between support struts (also wall stands and bases). For holding drawings and other documents.

Execution:

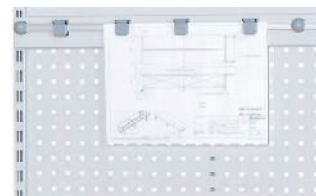
- Strip incl. 8 tilt-type magnets

Technical data:

- Material: Sheet steel
- Colour: Light grey RAL 7035

Width (mm)		1500	2000
50239...	Ident. No.	340	341
		○	○

Prod. Gr. 504



DIN A4 display panel holder for documents

For workbench construction

Application:

For hooking onto the perforated walls, for clearly-arranged management of documents at the workstation.

Technical data:

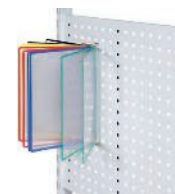
- Material: Plastic
- Colour: Multicolour

Execution:

- 10 document pockets, each with different frame colour
- Made of durable anti-glare PVC

50239...	Ident. No.	350
		○

Prod. Gr. 504



Hutch with swing doors

For workbench construction

Application:

Secure and dust-free storage of parts behind lockable swing doors, for mounting between main and intermediate supports, also suitable for mounting on walls and workbenches.

Technical data:

- Height: 470 mm
- Width: 955 mm
- Depth: 230 mm
- Door design: Full-sheet panel
- Rear panel design: Perforated
- Load-carrying capacity: 50 kg
- Central locking: Yes
- Lock type: Cylinder lock
- Material: Sheet steel
- Body colour: Light grey RAL 7035
- Surface: Powder-coated

Execution:

- Swivel doors with space-saving folding mechanism
- Lockable, incl. 2 keys
- Accessories for perforated metal panel wall: Shelf no. 50239 204, hook-on rail with boxes no. 50239 240-245, RASTERPLAN support elements and tool holders for inserting in perforated metal panel wall, see from no. 50638 300

Colour of front		Gentian blue RAL 5010	Anthracite grey RAL 7016
50239...	Ident. No.	142	042
		○	○

Prod. Gr. 504



Ident. No. 042

Rolling shutter cabinet

for workbench construction

Application:

Secure and dust-free storage of parts behind lockable roller shutters, for mounting between main and intermediate supports, also suitable for mounting on walls and workbenches.

Technical data:

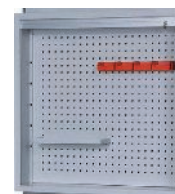
- Door design: Plastic shutters
- Rear panel design: Perforated
- Central locking: Yes
- Load-carrying capacity: 50 kg
- Lock type: Cylinder lock
- Material: Sheet steel
- Body colour: Light grey RAL 7035
- Colour of front: Light grey RAL 7035
- Surface: Powder-coated

Execution:

- incl. lockable roller shutter with 2 keys
- Accessories for perforated metal panel wall: Shelf no. 50239 204, hook-on rail with boxes no. 50239 240-245, RASTERPLAN support elements and tool holders for inserting in perforated metal panel wall, see from no. 50638 300

Depth (mm)		230
Height (mm)		955
	Width (mm)	
50239...	955	Ident. No. 143
		○

Prod. Gr. 504



Example application

ORION® Organising magnets

Application:

For fixing drawings and other paper documents to magnetic surfaces.

Execution:

- Magnetic clamp with coloured plastic cap



Outer Ø (mm)			20	25	30	34
	Colour	Ident. No.				
51161...	Blue	Ident. No.	010	060	110	155
			•	•	•	•
51161...	Yellow	Ident. No.	020	070	120	160
			•	•	•	•
51161...	Red	Ident. No.	030	080	130	170
			•	•	•	•
51161...	Black	Ident. No.	040	090	140	180
			•	•	•	•
51161...	White	Ident. No.	050	100	150	190
			•	•	•	•

Prod. Gr. 591

ORION® Decorative magnets

Application:

For attaching a variety of objects to magnetic surfaces.

Execution:

- Adhesive magnet with hook
- Painted white



Outer Ø (mm)			20	25	32	40
	Colour	Ident. No.				
51161...	White	Ident. No.	200	210	220	230
			•	•	•	•

Prod. Gr. 591

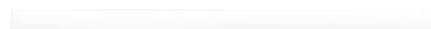
ORION® Wall strips

Application:

Used as a base under magnetic clamps.

Execution:

- White
- Self-adhesive



Width of band (mm)			50	50	35
Length of tape (m)			0.5	1	5
	Colour	Ident. No.			
51161...	White	Ident. No.	300	310	320
			•	•	•

Prod. Gr. 591

ORION® Magnetic tapes

Application:

For labelling with water-soluble permanent fibre tip pen, applications e.g. shelves, cabinets, organisational boards etc.

Technical data:

- Length of tape: 10 m



Width of band (mm)			20	30
	Colour	Ident. No.		
51162...	Blue	Ident. No.	010	110
			•	•
51162...	Yellow	Ident. No.	020	120
			•	•
51162...	Red	Ident. No.	030	130
			•	•
51162...	White	Ident. No.	040	140
			•	•

Prod. Gr. 591