



Information and overview for tilting containers

For chip dumper bodies

Tilting containers are available in many designs. A key consideration when ordering is whether the process of emptying is to be performed exclusively manually or using a forklift.

manual tipping:

if no forklift is available for emptying, the tipping process must be performed manually. for manual tipping procedures, the selection of a mobile version or alternatively rollers as accessories is therefore recommended. tilting containers for manual emptying are designed such that ground-level emptying is possible. this variant should be chosen only if no heavy material is to be collected. if the load is heavy or a forklift is used for emptying, a self-tilting container should be selected or a variant with device for tipping from the forklift operator's seat.



tipping from the forklift operator's seat:

this container variant features a special device that facilitates ergonomic yet safe emptying of the container. the tipping procedure is initiated via a steel cable. all containers with this function are protected against sliding via a link chain, and against unintentional tipping.



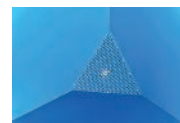
Self-tilting containers:

Exhibit a favourable centre of gravity that allows the tipping procedure to be performed automatically on unlatching when the container is loaded.



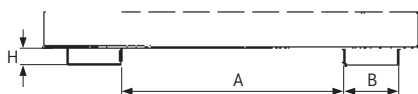
Chip containers:

For collecting chips and for separating fluids and solids, you must select a chip collection version. Our chip containers are equipped with a perforated plate and drain valve as standard and are welded so that they are oil-tight and watertight.



Dispenser systems:

Containers with a dispenser system are tilted more slowly, making the procedure gentler for the forklift. Furthermore, the container automatically "rolls" back into its actual position after emptying.



Dimensions of fork pockets:

Spacing of fork pockets (A)
Width of fork pockets (B)
Height of fork pockets (H)

Choose your preferred colour (no extra charge) for products with this logo:



RAL 2000

Yellow orange

RAL 3000

Flame red

RAL 6011

reseda green

RAL 7005

Mouse grey

RAL 5012

light blue

Swarf containers, manual tipping – mobile

with floor-level emptying option



Application:

An indispensable aid for collecting and separating liquids from solids and for transporting waste, bulk materials, chips and mass produced parts of all types.

Execution:

- Skip with sliding handle
- Stable sheet steel structure with edge reinforcement, base frame made of section steel
- With perforated sheet insert for chip collection, hole diameter 3 mm, division 6 mm and drain valve 1"
- Fork pockets with protection against accidental slipping and tipping
- Easily movable with two wheels and one steering wheel (from content of 600 litres with two steering wheels) made of solid rubber, diameter 250 x 60 mm, one steering wheel with wheel brake

Advantage:

- With floor-level emptying option
- Mobile thanks to wheels which mean it can be used everywhere
- Manual tilting of the trough ensures emptying with no residue, with locking protection against tipping over

Delivery:

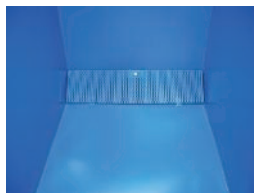
Goods supplied without packaging as standard.
Packaging on request.

Technical data:

- With stacker seat tilt function: No
- With perforated sheet: Yes
- With drain valve: Yes
- Oil and watertight: Yes



Ident. No. 142



Screen plate insert



Drain valve 1" for draining off the liquids

							Surface Colour	Lacquered Light blue RAL 5012
Volume (m ³)	Tipper edge height (mm)	Length x width x height	Fork pocket clear- ance (A) (mm)	Fork pocket size (W x H)	Number of wheels (PCS)	Load-carrying capacity (kg)	50266... Ident. No.	
0.25	680	1115 x 820 x 990 mm	465	170 x 55 mm	3	300	140	○
0.4	740	1320 x 900 x 1090 mm	465	170 x 55 mm	3	300	142	○
0.6	830	1395 x 1070 x 1220 mm	465	170 x 55 mm	4	300	144	○
1.0	870	1420 x 1340 x 1290 mm	465	170 x 55 mm	4	300	146	○

Prod. Gr. 5AI

➔ For technical drawing of fork pockets and colours available at no extra charge, see page 1914
Upon request: galvanised lid, opening on two sides

fetra... Swarf containers, manual tipping – mobile with Totalstop brake system

Transportgeräte with floor-level emptying option



Application:

An indispensable aid for collecting and separating liquids from solids and for transporting waste, bulk materials, swarf and mass produced parts of all types.

Execution:

- skip with sliding handle
- robust sheet steel construction, double-folded top rim, double-folded dumping edge
- with filter for separating liquids and solids
- 2 steering rollers and 2 fixed castors, TPE tyres 200 x 0 mm, hubs with ball bearings, Totalstop brake system
- no link chain as slide guard (see no. 50266034)

Advantage:

- Totalstop brake system for ideal locking of container for tipping
- with floor-level emptying option

Technical data:

- With stacker seat tilt function: No
- With perforated sheet: Yes
- With drain valve: Yes
- With wheel lock: Totalstop
- Oil and watertight: Yes



									Surface Colour	Powder-coated Anthracite grey RAL 7016	Powder-coated Brilliant blue RAL 5007
Form	Volume (m ³)	Tipper edge height (mm)	Internal length x in- ternal width x internal height	Length x width x height	Fork pocket clearance (A) (mm)	Fork pocket size (W x H)	Number of wheels	Load-car- rying ca- pacity (kg)	50266... Ident. No.		50266... Ident. No.
Low	0.25	780	1200 x 652 x 413 mm	1359 x 713 x 780 mm	203	194 x 72 mm	4	750	108	○	098
Box-shaped	0.45	733	1214 x 669 x 708 mm	1374 x 730 x 1072 mm	203	194 x 72 mm	4	750	112	○	102
Box-shaped	0.6	843	1321 x 794 x 735 mm	1458 x 855 x 1099 mm	327	194 x 72 mm	4	750	114	○	104
Box-shaped	0.8	843	1321 x 1044 x 735 mm	1458 x 1105 x 1099 mm	577	194 x 72 mm	4	800	116	○	106

Prod. Gr. 5AE

➔ for technical drawing of fork pockets, see page 1914

Accessories for			50266 098	50266 102	50266 104	50266 106	50266 108	50266 112	50266 114
50266...	dumper slide guard	Ident. No.	034 ○	034 ○	034 ○	034 ○	034 ○	034 ○	034 ○
Accessories for			50266 116						
50266...	dumper slide guard	Ident. No.	034 ○						

Mini chip container

Extremely low height. The ideal chip container under chip-producing machines



Application:

An indispensable aid for collecting and separating liquids from solids and for transporting waste, bulk materials, swarf and mass produced parts of all types.

Execution:

- Sheet metal tray with surrounding edge profile
- Stable base frame with fork pockets for fork prongs
- Screen plate and drain valve 1" for separating liquids from solids
- Fork pockets with protection against accidental slipping and tipping

Delivery:

Goods supplied without packaging as standard.
Packaging on request.

Technical data:

- With stacker seat tilt function: Yes
- With perforated sheet: Yes
- With drain valve: Yes
- Oil and watertight: Yes



Volume (m ³)	0.23	0.27
Tipper edge height (mm)	350	350
Length x width x height	1385 x 680 x 450 mm	1385 x 780 x 450 mm
Fork pocket clearance (A) (mm)	10	150
Fork pocket size (W x H)	200 x 60 mm	200 x 60 mm
Load-carrying capacity (kg)	750	1000

		Surface	Colour			
Mini chip container	50265...	Lacquered	Light blue RAL 5012	Ident. No.	653	663
Wheels for cabinet trolleys and tilting containers	50265...			Ident. No.	594	594
Cover for tilting containers	50265...			Ident. No.	696	697

Volume (m ³)	0.46	0.61
Tipper edge height (mm)	350	350
Length x width x height	1385 x 1280 x 450 mm	1385 x 1680 x 450 mm
Fork pocket clearance (A) (mm)	495	495
Fork pocket size (W x H)	200 x 60 mm	200 x 60 mm
Load-carrying capacity (kg)	1000	1000

		Surface	Colour			
Mini chip container	50265...	Lacquered	Light blue RAL 5012	Ident. No.	673	683
Wheels for cabinet trolleys and tilting containers	50265...			Ident. No.	594	594
Cover for tilting containers	50265...			Ident. No.	698	699

Prod. Gr. 5AI

➡ For technical drawing of fork pockets and colours available at no extra charge, see page 1914

Chip container with 3 release points

the automatic one with dispenser system



Application:

for collecting and separating liquids from solids and for transport and/or disposal of waste, bulk goods, chips and mass parts of all kinds. for offset tilting over the container.

Execution:

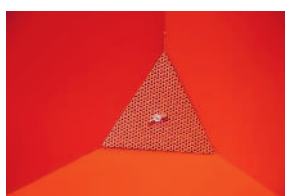
- 3 automatic release points
- automatically closing protection against accidental slipping
- innovative, automatically locking
- safeguard against unintentional dumping
- sheet metal tray with surrounding edge profile, welded oil-resistant and watertight
- screen plate insert hole diameter 3 mm, partition 6 mm, drain valve 1" for draining off liquids

Advantage:

- particularly suitable for collecting swarf
- rolling mechanism ensures comfortable tilting and back from the truck seat
- offset tilting above the container due to 3 offset release points
- efficient infeed of the container due to self-closing backup on the fork pockets

Technical data:

- With stacker seat tilt function: Yes
- With perforated sheet: Yes
- With drain valve: Yes
- Oil and watertight: Yes



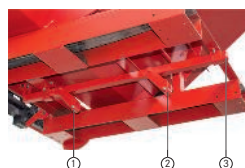
HIGHLIGHT

Volume (m³)					0.60	0.90
Length x width x height					1485 x 1070 x 865 mm	1485 x 1570 x 865 mm
Fork pocket clearance (A) (mm)					640	640
Fork pocket size (W x H)					200 x 91 mm	200 x 91 mm
Load-carrying capacity (kg)					1000	1000
		Surface	Colour			
Chip container with 3 release points	50265...	Lacquered	Light blue RAL 5012	Ident. No.	043 ○	053 ○
Cover for tilting containers	50265...			Ident. No.	094 ○	095 ○

Prod. Gr. 5AI

➔ For technical drawing of fork pockets and colours available at no extra charge, see page 1914

Product details



For time-saving and safe handling of the container and to offset tilting over the container. The driver must not dismount to attach the safety chain when picking up and setting down.

Swarf container, tipping from the seat of a forklift truck – mobile

Carrying capacity 1000 kg, can be emptied from the ground



Application:

For the collection and separation of liquids from solids and for the transport or disposal of all types of waste, bulk materials, chips and mass-produced parts.

Execution:

- High flexibility for the transport and unloading of bulk materials
- Wheelset and pushing handle for easy manual transport
- Fork pockets for transport with forklift truck
- Ground-level emptying or with fork-lift truck in the case of large containers
- Robust steel sheet structure, base frame with fork pockets
- Tiltable trough
- Protections against accidental slipping and tipping
- 2 steering and 2 fixed castors made of polyamide diameter 180 mm, of which one steering castor with locking device - design height 220 mm, max. carrying capacity 1000 kg

Advantage:

- Particularly suitable for collecting chips

Delivery:

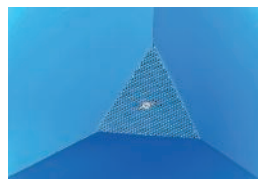
Goods supplied without packaging as standard.
Packaging available for an additional charge.

Technical data:

- With stacker seat tilt function: Yes
- With perforated sheet: Yes
- With drain valve: Yes
- Oil and watertight: Yes



Ident. No. 884



Ident. No. 878

Volume (m³)	Tipper edge height (mm)	Length x width x height	Fork pocket clearance (A) (mm)	Fork pocket size (W x H)	Number of wheels (PCS)	Load-carrying capacity (kg)	Surface	Lacquered
							Colour	Light blue RAL 5012
0.4	1020	1220 x 1010 x 1110 mm	100	200 x 80 mm	4	1000	50266... 884	Ident. No. ○
0.55	1055	1250 x 1200 x 1170 mm	180	200 x 80 mm	4	1000	886	○
0.7	1175	1345 x 1200 x 1275 mm	180	200 x 80 mm	4	1000	888	○

Prod. Gr. 5AI

➔ For technical drawing of fork pockets and colours available at no extra charge, see page 1914

Source: Hahn+Kolb Werkzeuge GmbH
Technical data subject to change.
Availability subject to country specific rules and regulations.

www.iconridge.com

Swarf container, tipping from the seat of a forklift truck

load-bearing capacity of up to 1250 kg, mobile with unwinding system



Application:

For the collection and separation of liquids from solids and for the transport or disposal of all types of waste, bulk materials, chips and mass-produced parts.

Execution:

- Stable base frame with rollers, sliding handle and fork pockets
- Sheet metal tray with surrounding edge profile, welded oil-resistant and watertight
- Screen plate insert hole diameter 3 mm, partition 6 mm, drain valve 1" for draining off liquids
- Protection against accidental slipping and tipping
- Mobile with wheels made of polyamide

Advantage:

- Particularly suitable for collecting chippings
- Favourable load centre, tilting at any height using a wire rope, anti-roll-off mechanism ensures convenient forwards and backwards tipping from the forklift seat
- Mobile thanks to wheels which mean it can be used everywhere

Delivery:

Goods supplied without packaging as standard.
Packaging available for an additional charge.

Notes:

Upon request: galvanised lid, opening on two sides

Technical data:

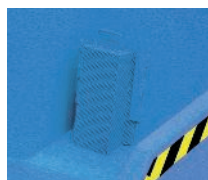
- With stacker seat tilt function: Yes
- With perforated sheet: Yes
- With drain valve: Yes
- Oil and watertight: Yes



Ident. No. 203-204, 206-208



Drain valve 1" for draining off the liquids



Screen plate insert for chip collection, hole Ø 3 mm, division 6 mm



Ident. No. 203, tilting at any height using a wire rope from the seat of the fork-lift truck

Surface							Lacquered		Lacquered	
Colour							Light blue RAL 5012		Optional	
Volume (m³)	Tipper edge height (mm)	Length x width x height	Fork pocket clearance (A) (mm)	Fork pocket size (W x H)	Number of wheels (PCS)	Load-carrying capacity (kg)	50266... Ident. No.		50266... Ident. No.	
0.3	690	1275 x 820 x 820 mm	280	200 x 70 mm	3	1000	203	○	204	○
0.5	690	1275 x 1280 x 820 mm	30	200 x 70 mm	4	1000	205	○	206	○
0.75	950	1620 x 1180 x 1060 mm	30	200 x 70 mm	4	1250	207	○	208	○

Prod. Gr. 5AI

➡ For technical drawing of fork pockets and colours available at no extra charge, see page 1914

**MORE THAN 60,000 PRODUCTS
FOR MAXIMUM INNOVATION.**

WE HAVE WHAT IT TAKES.

For a complete range of products that meet the toughest demands, visit www.iconridge.com

Swarf container, tipping from the seat of a forklift truck – perforated metal plate over the entire base

Load-bearing capacity: up to 1500 kg



Application:

For the collection and separation of liquids from solids and for the transport or disposal of all types of waste, bulk materials, chips and mass-produced parts.

Execution:

- Perforated metal plate screwed across the entire base, 100 mm above the base, hole diameter 3 mm, spacing 6 mm
- Drain valve 1" for draining off liquids
- Tilting at any height using a wire rope from the stacker seat
- Sheet metal tray with surrounding edge profile
- Sturdy base frame with fork pockets
- Protection against accidental slipping and tipping
- All dimensions without wheels
- Design with wheels:** see under accessories order separate wheelset no. 50266 370 in addition, design height 220 mm

Delivery:

Goods supplied without packaging as standard.
Packaging available for an additional charge.

Notes:

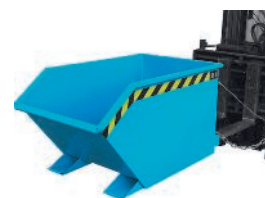
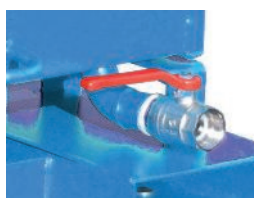
On request: galvanised lid, openable on two sides

Technical data:

- With stacker seat tilt function: Yes
- With perforated sheet: Yes
- With drain valve: Yes
- Oil and watertight: Yes



Ident. No. 340, 343



Ident. No. 341

						Surface	Lacquered
						Colour	Light blue RAL 5012
Volume (m ³)	Tipper edge height (mm)	Length x width x height	Fork pocket clearance (A) (mm)	Fork pocket size (W x H)	Load-carrying capacity (kg)	50266... Ident. No.	
0.3	395	1440 x 680 x 580 mm	10	200 x 60 mm	750	340	○
0.5	495	1440 x 780 x 680 mm	150	200 x 60 mm	1000	341	○
0.75	495	1440 x 1280 x 680 mm	495	200 x 60 mm	1000	342	○
1.0	565	1640 x 1280 x 780 mm	495	200 x 60 mm	1500	343	○
1.5	890	1640 x 1280 x 1090 mm	495	200 x 60 mm	1500	344	○

Prod. Gr. 5AI

➔ For technical drawing of fork pockets and colours available at no extra charge, see page 1914

Wheel set

Material of the wheel	Wheel Ø (mm)	Overall height (mm)	Number of steering rollers (PCS)	Number of fixed rollers (PCS)	Number of wheel adjusters (PCS)	Load-carrying capacity (kg)	50266... Ident. No.
Polyamide	180	220	2	2	1	1500	370 ○

Prod. Gr. 5AI

Tilting container, manual tilting

Load-bearing capacity 300 kg



Application:

For the collection and disposal of all types of bulk goods and solid materials with floor-level emptying option.

Execution:

- Robust sheet steel structure with edge reinforcement
- Tiltable trough with handle
- Base frame with fork pockets
- Easily mobile using stacker
- Oil-resistant and watertight
- Protection against accidental slipping and tipping
- Optionally box-shaped or low trough
- All dimensions without wheels
- Design with wheels:** see under Accessories order separate wheel set no. 50266 280 in addition, design height 235 mm

Advantage:

- With floor-level emptying option

Delivery:

Goods supplied without packaging as standard.
Packaging available for an additional charge.

Notes:

Upon request: galvanised lid, opening on two sides

Technical data:

- With stacker seat tilt function: No
- With perforated sheet: No
- With drain valve: No
- Oil and watertight: Yes



Ident. No. 250

							Surface Colour	Lacquered Light blue RAL 5012
Form	Volume (m³)	Tipper edge height (mm)	Length x width x height	Fork pocket clear- ance (A) (mm)	Fork pocket size (W x H)	Load-carrying capacity (kg)	50266... Ident. No.	
Box-shaped	0.25	430	1115 x 590 x 740 mm	205	170 x 55 mm	300	250	○
Box-shaped	0.4	485	1320 x 670 x 840 mm	285	170 x 55 mm	300	251	○
Box-shaped	0.6	520	1395 x 840 x 905 mm	455	170 x 55 mm	300	252	○
Box-shaped	0.8	560	1420 x 910 x 975 mm	525	170 x 55 mm	300	253	○
Box-shaped	1	560	1420 x 1110 x 975 mm	725	170 x 55 mm	300	254	○
Low	0.25	530	1375 x 670 x 530 mm	285	170 x 55 mm	300	255	○
Low	0.4	605	1430 x 840 x 605 mm	455	170 x 55 mm	300	256	○

Prod. Gr. 5AI

➔ For technical drawing of fork pockets and colours available at no extra charge, see page 1914

Tilting container, manual tilting – mobile

Load-bearing capacity 300 kg



Application:

For the collection and disposal of all types of bulk goods and solid materials with floor-level emptying option.

Execution:

- Sturdy sheet steel structure with edge reinforcement, base frame made of section steel, oil- and waterproof
- Anti-tilt securing device
- 2 wheels + 1 steering wheel (from content 600 l = + 2 steering wheels) from solid rubber diameter 250 x 60 mm, among which one steering wheel with a locking device, with a push handle
- With fork pockets with protection against accidental slipping and tipping

Advantage:

- With floor-level emptying option
- Wheels mean that it is mobile and can therefore be used anywhere

Delivery:

Goods supplied without packaging as standard. Packaging available for an additional charge.

Notes:

Upon request: galvanised lid, opening on two sides

Technical data:

- With stacker seat tilt function: No
- With perforated sheet: No
- With drain valve: No
- Oil and watertight: Yes



Ident. No. 161

							Surface Colour	Lacquered Light blue RAL 5012
Volume (m³)	Tipper edge height (mm)	Length x width x height	Fork pocket clearance (A) (mm)	Fork pocket size (W x H)	Number of wheels (PCS)	Load-car- rying capacity (kg)	50266... Ident. No.	
0.25	680	1115 x 820 x 990 mm	465	170 x 55 mm	3	300	160	○
0.4	740	1320 x 900 x 1090 mm	465	170 x 55 mm	3	300	161	○
0.6	830	1395 x 1070 x 1220 mm	465	170 x 55 mm	4	300	162	○
1.0	870	1420 x 1340 x 1290 mm	465	170 x 55 mm	4	300	163	○

Prod. Gr. 5AI

➔ For technical drawing of fork pockets and colours available at no extra charge, see page 1914

fetra Tilting container, manual tilting – mobile with total stop

Transportgeräte Load-bearing capacity: up to 800 kg



Application:

For the collection and disposal of all types of bulk goods and solid materials with floor-level emptying option.

Execution:

- Skip with sliding handle
- Robust sheet steel construction, double-folded top rim, double-folded dumping edge
- 2 steering rollers and 2 fixed castors, TPE tyres 200 x 0 mm, ball bearings wheel hubs, Totalstop brake system
- No link chain slide guard (see no. 50266034)

Advantage:

- Totalstop brake system for ideal locking of container for tipping
- With floor-level emptying option

Technical data:

- With stacker seat tilt function: No
- With perforated sheet: No
- With drain valve: No
- With wheel lock: Totalstop
- Oil and watertight: Yes



Ident. No. 012

Form	Volume (m³)	Tipper edge height (mm)	Internal length x internal width x internal height	Length x width x height	Fork pocket clearance (A) (mm)	Fork pocket size (W x H)	Number of wheels	Load-carrying capacity (kg)	Surface	Powder-coated		Powder-coated	
									Colour	Brilliant blue RAL 5007	Ident. No.	Anthracite grey RAL 7016	Ident. No.
Low	0.25	780	1200 x 652 x 413 mm	1359 x 713 x 780 mm	203	194 x 72 mm	4	750	088	●	008	○	
Box-shaped	0.45	733	1214 x 669 x 708 mm	1374 x 730 x 1072 mm	203	194 x 72 mm	4	750	089	●	012	○	
Box-shaped	0.6	843	1321 x 794 x 735 mm	1458 x 855 x 1099 mm	327	194 x 72 mm	4	750	090	●	014	○	
Box-shaped	0.8	843	1321 x 1044 x 735 mm	1458 x 1105 x 1099 mm	577	194 x 72 mm	4	800	091	●	016	○	

Prod. Gr. 5AE

➡ For technical drawing of fork pockets, see page 1914

Tilting container for tipping from the seat of a forklift truck

Extremely low height. The ideal tilting container under machines



Application:

To collect and dispose of bulk materials and solids of any kind. Wherever there is little space.

Execution:

- Sheet metal tray with surrounding edge profile
- Stable base frame with fork pockets for fork prongs
- Fork pockets with protection against accidental slipping and tipping
- Favourable tilting angle

Technical data:

- With stacker seat tilt function: Yes
- With perforated sheet: Yes
- With drain valve: Yes
- Oil and watertight: Yes



Volume (m³)	0.23	0.27
Tipper edge height (mm)	350	350
Length x width x height	1385 x 680 x 450 mm	1385 x 780 x 450 mm
Fork pocket clearance (A) (mm)	10	150
Fork pocket size (W x H)	200 x 60 mm	200 x 60 mm
Load-carrying capacity (kg)	750	1000

		Surface	Colour			
Tilting container for tipping from the seat of a forklift truck	50265...	Lacquered	Light blue RAL 5012	Ident. No.	613 ○	623 ○
Wheels for cabinet trolleys and tilting containers	50265...			Ident. No.	594 ○	594 ○
Cover for tilting containers	50265...			Ident. No.	691 ○	692 ○

Volume (m³)	0.46	0.61
Tipper edge height (mm)	350	350
Length x width x height	1385 x 1280 x 450 mm	1385 x 1680 x 450 mm
Fork pocket clearance (A) (mm)	495	495
Fork pocket size (W x H)	200 x 60 mm	200 x 60 mm
Load-carrying capacity (kg)	1000	1000

		Surface	Colour			
Tilting container for tipping from the seat of a forklift truck	50265...	Lacquered	Light blue RAL 5012	Ident. No.	633 ○	643 ○
Wheels for cabinet trolleys and tilting containers	50265...			Ident. No.	594 ○	594 ○
Cover for tilting containers	50265...			Ident. No.	693 ○	694 ○

Prod. Gr. 5AI

➡ For technical drawing of fork pockets and colours available at no extra charge, see page 1914

"automatic" tilting container with 3 release points



Application:

Application:
For offset tilting over the container

Execution:

- 3 automatic release points
- Automatically closing protection against accidental slipping
- Protection against accidental tipping
- Favourable load centre
- Sheet metal tray with surrounding edge profile
- Sturdy base frame with fork pockets

Advantage:

- offset tilting above the container due to 3 offset release points
- efficient infeed of the container due to self-closing backup on the fork pockets

Technical data:

- With stacker seat tilt function: Yes
- With perforated sheet: No
- With drain valve: No
- Oil and watertight: No



Volume (m ³)					0.6	0.9
Length x width x height					1490 x 1070 x 865 mm	1490 x 1570 x 865 mm
Fork pocket clearance (A) (mm)					640	640
Fork pocket size (W x H)					200 x 91 mm	200 x 91 mm
Load-carrying capacity (kg)					1000	1000
		Surface	Colour			
"automatic" tilting container with 3 release points	50265...	Lacquered	Light blue RAL 5012	Ident. No.	013 ○	023 ○
Volume (m ³)					1.2	
Length x width x height					1925 x 1070 x 1125 mm	
Fork pocket clearance (A) (mm)					640	
Fork pocket size (W x H)					200 x 91 mm	
Load-carrying capacity (kg)					1500	
		Surface	Colour			
"automatic" tilting container with 3 release points	50265...	Lacquered	Light blue RAL 5012	Ident. No.	033 ○	

Prod. Gr. 5AI

➡ For technical drawing of fork pockets and colours available at no extra charge, see page 1914



Product details



For time-saving and safe handling of the container and to offset tilting over the container. The driver must not dismount to attach the safety chain when picking up and setting down.

Steel collection container for cleaning wool, self-extinguishing

filling volume 73 litres



Application:

the classic Feuertrotz - also known as robust universal collector for industry and workshop

Execution:

- with a swing lid - very easy deposit
- recessed side handles for easy handling
- made of galvanised quality sheet steel or stainless steel
- self-extinguishing, non-flammable, TÜV/GS-tested

Technical data:

- With internal container: No
- Volumetric capacity: 73 l
- Width x height x depth: 400 x 680 x 400 mm
- Height x width x depth: 680 x 400 x 400 mm
- Building material class: A1 - Non-flammable



Feed damper colour			Gentian blue RAL 5010 Powder-coated	Flame red RAL 3000 Powder-coated	Stainless steel colours Stainless steel FINISH
Surface					
Steel collection container for cleaning wool, self-extinguishing	50072...	Ident. No.	100 ○	102 ○	104 ○
Refuse bags	50072...	Ident. No.	501 ●	501 ●	501 ●

Prod. Gr. 504

Steel cleaning wool bins, flame-retardant

Filling volume 120 litres and 170 litres

Execution:

- With 2 hinged side handles
- No. 50073:
 - sloping lid projecting on all sides
 - Shackle for padlock

- No. 50075: With self-closing lid in a self-closing sloping lid which projects on all sides

Technical data:

- With internal container: No



No. 50073



No. 50075

Volumetric capacity		170 l	120 l
Width x height x depth		625 x 750/980 x 375 mm	500 x 650/880 x 400 mm
Feed damper colour		Blue grey RAL 7031	Flame red RAL 3000
Height x width x depth		750/980 x 625 x 375 mm	650/880 x 500 x 400 mm
50073...	Ident. No.	010 ●	-
50075...	Ident. No.	-	010 ●

Prod. Gr. 504

Plastic waste collector

extremely small pack size

Execution:

- With foldable cover

- Can be fitted at 3 heights
- Suitable for refuse bags up to max. 120 litres

50072...	Ident. No.	199 ●
----------	------------	----------

Prod. Gr. 504



Recyclable materials collector made from galvanised sheet steel or stainless steel

filling volume 45 litre, odour-inhibiting and fire-resistant, self-extinguishing



Execution:

- made of galvanised quality sheet steel or stainless steel
- detachable head element for fixing the waste bag
- Ident. No. 110–120:**
 - Non-flammable as per DIN 4102 A1
 - Self-extinguishing, TÜV/GS-tested
- Ident. No. 122–130:**
 - non-flammable as per DIN 4102 A1
 - self-extinguishing, TÜV/GS-tested

Technical data:

- With internal container: No
- Volumetric capacity: 45 l
- Width x height x depth: 330 x 640 x 310 mm
- Height x width x depth: 640 x 330 x 310 mm
- Building material class: A1 - Non-flammable



Version			Stationary	Stationary	Stationary	Stationary	Stationary	Stationary	On castors	On castors	On castors	On castors	On castors
Feed damper colour			Flame red RAL 3000	Light grey RAL 7035	Traffic green RAL 6024	Gentianblue RAL 5010	Signal yellow RAL 1003	Stainless steel colours	Flame red RAL 3000	Light grey RAL 7035	Traffic green RAL 6024	Gentianblue RAL 5010	Signal yellow RAL 1003
Surface			Powder-coated	Powder-coated	Powder-coated	Powder-coated	Powder-coated	Stainless steel FINISH	Powder-coated	Powder-coated	Powder-coated	Powder-coated	Powder-coated
Recyclable materials collector made from galvanised sheet steel or stainless steel	50072...	Ident. No.	110	112	114	116	118	120	122	124	126	128	130
			○	○	○	○	○	○	○	○	○	○	○
sticker set	50072...	Ident. No.	186	186	186	186	186	186	186	186	186	186	186
Refuse bags	50072...	Ident. No.	560	560	560	560	560	560	560	560	560	560	560
			●	●	●	●	●	●	●	●	●	●	●

Prod. Gr. 504

Recyclable materials collector

Filling volume 65 litre, odour-inhibiting and fire-resistant, self-extinguishing



Execution:

- powerful solid colours for high sorting security
- extremely robust from zinc-coated quality metal sheet
- upper part is detachable
- self-closing lids, odour-inhibiting
- non-flammable as per DIN 4102 A1
- self-extinguishing, TÜV/GS-tested

Technical data:

- With internal container: Yes
- Volumetric capacity: 65 l
- Width x height x depth: 400 x 970 x 380 mm
- Height x width x depth: 970 x 400 x 380 mm
- Building material class: A1 - Non-flammable



Feed damper colour			Flame red RAL 3000	Light grey RAL 7035	Traffic green RAL 6024	Gentian blue RAL 5010	Signal yellow RAL 1003
Recyclable materials collector	50072...	Ident. No.	132	134	136	138	140
			○	○	○	○	○
sticker set	50072...	Ident. No.	186	186	186	186	186
Refuse bags	50072...	Ident. No.	501	501	501	501	501
			●	●	●	●	●

Prod. Gr. 504

Recyclable materials collector made of galvanised sheet steel

filling volume of 45–120 litres, with waste bag holder or galvanised inner container



Execution:

- **Ident. No. 151–165:** Bag holder with ball-bearing telescopic rails to pull out (ProSlide System) – this makes changing waste bags much simpler
- **Ident. No. 151–173:**
 - Made of galvanised quality sheet steel
 - Self-closing lids dampened and silent closing
 - Ergonomic handle and foot pedal made of stainless steel
 - Hinged doors locked with square socket key
 - Adjustable feet to compensate for uneven surfaces
 - Can be retrofitted to the mobile version using the roller kit
- **Ident. No. 167–181:** With galvanised inner container – self-extinguishing
- **Ident. No. 175–181:**
 - made of galvanised quality sheet steel
 - self-closing lids dampened and silent closing
 - ergonomic handle and foot pedal made of stainless steel
 - hinged doors locked with square socket key
 - adjustable feet to compensate for uneven surfaces
 - can be retrofitted to the mobile version using the roller kit

Advantage:

- **Ident. No. 151–173:**
 - For every need – the most comprehensive program on the market
 - Silent closing due to lid damping
 - Door colour selectable
- **Ident. No. 175–181:**
 - for every need - the most comprehensive program on the market
 - silent closing due to lid damping
 - door colour selectable

Delivery:

Ident. No. 151–173: Incl. Pro-Pads glue set (in anthracite, blue, yellow and green) for individual colour coding of the self-closing lids

Ident. No. 175–181: incl. Pro-Pads glue set (in anthracite, blue, yellow and green) for individual colour coding of the self-closing lids

Technical data:

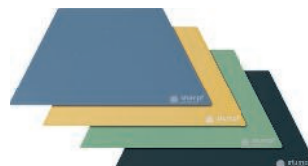
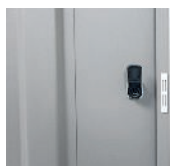
- Colour: Aluminium grey
- Feed damper colour: Optional
- Surface: Powder-coated
- Building material class: A1 - Non-flammable



With internal container				Without internal container	Without internal container	Without internal container	Without internal container	With internal container	With internal container	With internal container	With internal container
				Not self-extinguishing	Not self-extinguishing	Not self-extinguishing	Not self-extinguishing	Self-extinguishing	Self-extinguishing	Self-extinguishing	Self-extinguishing
Volumetric capacity				45 l	60 l	75 l	120 l	45 l	60 l	75 l	120 l
Width x height x depth				400 x 800 x 380 mm	400 x 900 x 380 mm	400 x 1000 x 380 mm	450 x 1100 x 450 mm	400 x 800 x 380 mm	400 x 900 x 380 mm	400 x 1000 x 380 mm	450 x 1100 x 450 mm
Height x width x depth				800 x 400 x 380 mm	900 x 400 x 380 mm	1000 x 400 x 380 mm	1100 x 450 x 450 mm	800 x 400 x 380 mm	900 x 400 x 380 mm	1000 x 400 x 380 mm	1100 x 450 x 450 mm
Recyclable materials collector made of galvanised sheet steel	50072...	Foot-operated	Ident. No.	159	161	163	165	175	177	179	181
		Food-operated		○	○	○	○	○	○	○	○
Recyclable materials collector made of galvanised sheet steel	50072...	Not food-operated	Ident. No.	151	153	155	157	167	169	171	173
		Food-operated		○	○	○	○	○	○	○	○
sticker set	50072...		Ident. No.	186	186	186	186	186	186	186	186
				○	○	○	○	○	○	○	○
Roller set	50072...		Ident. No.	200	200	200	200	200	200	200	200
				○	○	○	○	○	○	○	○
Refuse bags	50072...		Ident. No.	528	529	501	501	528	529	501	501
				●	●	●	●	●	●	●	●

Prod. Gr. 559

product details



Recyclable materials collector made from sheet steel or stainless steel, self-extinguishing

Filling volume 45-120 litres, with inner container



Execution:

- Extra large opening
- Colour coding of flaps with ProPads
- With mount for waste bags or galvanised metal liner
- Rounded head element
- Front hinged door
- Adjustable feet to compensate for uneven surfaces

- Can be retrofitted to the mobile version using the roller kit
- Non-flammable as per DIN 4102 A1
- TÜV Nord certified

Technical data:

- Surface: Powder-coated
- Building material class: A1 - Non-flammable



Ident. No. 183-185

With internal container			With rubbish bag holder	With internal container	With rubbish bag holder	With internal container
Volumetric capacity			70 l	70 l	3 x 70 l	3 x 70 l
Width x height x depth			400 x 1000 x 380 mm	400 x 1000 x 380 mm	1210 x 1000 x 380 mm	1210 x 1000 x 380 mm
Height x width x depth			1000 x 400 x 380 mm	1000 x 400 x 380 mm	1000 x 1210 x 380 mm	1000 x 1210 x 380 mm
Recyclable materials collector made from sheet steel or stainless steel, self-extinguishing	50072...	Ident. No.				
			183	185	187	189
			○	○	○	○
sticker set	50072...	Ident. No.	186	186	186	186
			○	○	○	○
Roller set	50072...	Ident. No.	200	200	200	200
			○	○	○	○
Refuse bags	50072...	Ident. No.	501	501	501	501
			●	●	●	●

Prod. Gr. 559

Foldable waste collector

single, double and triple version

Application:

For rubbish bags and refuse bags with a volume of 20-130 litres

Execution:

- Galvanized steel tube frame
- High-quality plastic cover with clamping insert

Advantage:

- Can be assembled at lightning speed
- Space-saving storage

Technical data:

- With internal container: No



Ident. No. 195



Ident. No. 196



Ident. No. 197

Version		1-fold	2-fold	3-fold
Width x height x depth		35 x 78 x 37 cm	66 x 78 x 37 cm	96 x 78 x 37 cm
Height x width x depth		78 x 35 x 37 cm	78 x 66 x 37 cm	78 x 96 x 37 cm
50072...	Ident. No.	195	196	197
		●	●	●

Prod. Gr. 504

Waste collector for 120 l bags

Execution:

- Tubular steel structure

- PVC lid
- Diameter of opening: 340 mm

Waste collector for 120 l bags

Refuse bags	50072...	Ident. No.	190
			○
		Ident. No.	550
			●

Prod. Gr. 5AB



Mobile dispenser with waste bag holder

Execution:

- Suitable for roll width up to 42 cm

- Mobile
- Painted blue



69726...

Ident. No. 010

Prod. Gr. 650

Accessories for		69726 010
50072...	Refuse bag, universal, fits 70-litre and 120-litre bins Flat bag made of LDPE,	Ident. No. 550
69726...	Paper towels 1000 sheets per roll, Sheet size 36 x 24 cm, diameter 38.5 cm	Ident. No. 110
69726...	Paper towels 1000 sheets per roll, Sheet size 36 x 36 cm, diameter 37.5 cm	Ident. No. 120

Paper dispenser

stand or wall-mounted model

Application:

Indoors

Technical data:

- Colour: White
- Weight: 5 kg

Execution:

- Robust paper dispenser, available as a free-standing or wall model



Ident. No. 750



Ident. No. 752

Height x width x depth		420 x 460 x 220 mm	940 x 460 x 590 mm
Paper dispenser	50072...	Ident. No. 750	752

Prod. Gr. 504

Pictogram sticker set

For marking recyclable materials collectors

Application:

For labelling recyclable materials collectors with pictograms to aid waste sorting

Technical data:

- Height: 180 mm
- Width: 160 mm



Execution:

- Self-adhesive symbol stickers, colour-coded for residual waste, paper, plastic, metal, glass and bio-waste

50072...

Ident. No. 186

Prod. Gr. 504

Refuse bag for 45-l bin
side gusseted bags for optimum hold in the bin

Application:
Gusseted bags fit perfectly in the container and allow easy removal of waste.

- Technical data:**
- Material thickness: 40 µm
 - Number of pieces per packet: 250 PCS
 - Material: LDPE - Low density polyethylene



Suitable for rubbish bin (l)	45	45
Volumetric capacity	approx. 60 l	approx. 60 l
Width (mm)	350	370
Depth (mm)	300	350
Height (mm)	700	720
Colour	Grey	Transparent
50072...	Ident. No. 560	528
	●	●

Prod. Gr. 504



THE HIGHEST QUALITY PRODUCTS
FOR MAXIMUM EFFICIENCY.

WE HAVE WHAT IT TAKES.

For a complete range of products that meet the toughest demands, visit www.iconridge.com

Universal refuse bag

flat bag

Technical data:

- Colour: Blue
- Material thickness: 40 µm

- Number of pieces per packet: 250 PCS
- Material: LDPE - Low density polyethylene



Suitable for rubbish bin (l)	70	120
Volumetric capacity	70 l	120 l
Width (mm)	575	700
Height (mm)	1000	1100
50072...	Ident. No.	

Prod. Gr. 504

LDPE refuse sack for 120 and 240-litre bins

side gusseted bag for optimum hold in the bin

Application:

Gusseted bags fit perfectly in the waste bin, allow easy removal of waste and protect against soiling of the bin.

Technical data:

- Material thickness: 100 µm
- Number of pieces per packet: 100 PCS
- Material: LDPE - Low density polyethylene



Suitable for rubbish bin (l)	120	120	240	240
Volumetric capacity	approx. 160 l	approx. 160 l	approx. 280 l	approx. 280 l
Width (mm)	480	500	650	650
Depth (mm)	470	450	550	550
Height (mm)	1250	1250	1350	1350
Colour	Blue	Transparent	Blue	Transparent
50072...	Ident. No.			

Prod. Gr. 504



Broom set with shadow image foil for perforated metal plate walls

practical set with broom, hook and magnetic shadow image foils

Application:

Ideal combination set for keeping any workshop clean. Shadow image foil makes it more likely that the broom will be returned properly to its place after use.

Execution:

- Metal dustpan with rubber lip
- Hand brush made of horsehair
- Broom with fine natural bristle mixture and 1400 mm long wooden broom handle
- 3 sturdy metal hooks for attaching to a perforated metal plate wall
- Shadow image foil, black with good magnetic adhesion



50072...	Ident. No.	700

Prod. Gr. 598

ORION® Dustpans

Execution:

■ Ident. No. 500:

- With wooden handle
- No lip
- Painted black
- Dustpan size: 220 x 200 mm

■ Ident. No. 510:

- Metal dustpan and handle
- With rubber lip

Technical data:

- Material: Sheet steel



Ident. No. 500



Ident. No. 510

Material of the grip handle	Wood	Metal
56750...	Ident. No.	

Prod. Gr. 598

ORION® Wooden hand brush



Ident. No. 610



Ident. No. 620

Material of the bristles		Coconut	Coconut	Horsehair	Horsehair
Length (mm)		280	430	280	430
56737...	Ident. No.	520	620	510	610
		●	●	●	●

Prod. Gr. 598

ORION® Factory and workshop broom

Application:

Ident. No. 010-020, 050-060: For dry floors

Ident. No. 030-040: For concrete, industrial and wooden floors

Ident. No. 070-080: For rough indoor and outdoor floors

Execution:

▪ **Ident. No. 030-040:** Resistant to oil and alkalis

▪ **Ident. No. 070-080:** Wet- and oil-resistant fibres

Delivery:

With handle holder, without handle; please order separately



Ident. No. 010-020



Ident. No. 030-040



Ident. No. 050-060



Ident. No. 070

										Factory and workshop broom										Brooms, handles, squeegees, window wipers, device holders
Material of the bristles										Coconut		Elaston		Artificial fibre bristle		Arenga				
Width (mm)										56760... Ident. No.		56760... Ident. No.		56760... Ident. No.		56760... Ident. No.		56760... Ident. No.		
400										010	●	030	●	050	●	070	●	110	●	
600										020	●	040	●	060	●	080	●	120	●	

Prod. Gr. 598

Squeegee

Application:

For pushing liquids together

Delivery:

With handle holder, without handle; please order separately

Execution:

- Metal body with robust handle holder
- With double foam/rubber lip

Technical data:

- Material: Metal



Width (mm)			450	600
Squeegee	56761...	Ident. No.	010	020
			●	●
Brooms, handles, squeegees, window wipers, device holders	56760...	Ident. No.	110	110
			●	●

Prod. Gr. 566

Rice straw broom

With handle

Execution:

- With handle

Technical data:

- Width: 300 mm
- Length: 1500 mm



	Material of the bristles		
56761...	Rice straw	Ident. No.	030
			●

Prod. Gr. 566

Steel shovels

Execution:

- Without handle

Technical data:

- Width: 250 mm
- Material: Steel



Ident. No. 040



Ident. No. 050

Blade shape		Pointed shape (Frankfurt shape)	Flat shape (Holstein shape)
56761...	Ident. No.	040	050
		●	●

Prod. Gr. 566

	Accessories for		56761 040	56761 050
56761... mm	Shovel handle 1300	Ident. No.	060	060
			●	●

Swarf hook

Application:

For safely removing chips from processing machines.

- Ident. No. 450–600:** With deep plastic hand guard for increased safety

Execution:

- Ident. No. 010–020:** Hands protected with flat steel plate

Technical data:

- Blade diameter: 8 mm



Ident. No. 010–020



Ident. No. 450–600

Blade length (mm)		300	500	350	500
Material of the grip handle		1-component plastic	1-component plastic	Wood	Wood
56780...	Ident. No.	010	020	450	600
		●	●	●	●

Prod. Gr. 565



Universal absorbent roll – in light-, medium- and heavy-duty versions

Absorbs oil, water, coolants and solvents

Application:

For daily use for leaks and drips around the machine, on floors and at workstations.

Execution:

- Made from 100% polypropylene and 25% recycled material
- Medium durability

Advantage:

- Conceals dirt
- 8-ply for outstanding tear resistance
- Perforated – tears off easily

Technical data:

- Type: Universal
- Number of pieces per packet: 1 PCS
- Delivery unit: Mat roll in bag



Before



After

Absorptive capacity	Length x width	Perforation width x perforation length	Suction volume (l)	Type description	Colour	
					69746...	Grey
High	4600 x 61 cm	25.5 x 30.5 cm	123.0	MAT 202-01	Ident. No.	202
High	4600 x 76 cm	25.5 x 38.0 cm	152.0	MAT 230		230
Middle	6100 x 61 cm	25.5 x 30.5 cm	128.0	MAT 185		185
Low	9100 x 76 cm	25.5 x 38.0 cm	152.0	MAT 225		225

Prod. Gr. 6PA

Accessories for		69746 185	69746 202	69746 225	69746 230
69746... Free-standing roll holder GEN 182 Width-adjustable from 41 to 84 cm	Ident. No.	182 ○	182 ○	182 ○	182 ○
69746... Wall-mounted roll holder, MAT 293 For rolls up to 91 cm in width	Ident. No.	293 ○	293 ○	293 ○	293 ○



Universal absorbent mats – individual mats, either loose or in a dispenser box

Absorbs oil, water, coolants and solvents

Application:

For daily use for minor leaks around the machine, in drawers, on shelving or on workbenches.

Execution:

- Made from 100% polypropylene and 25% recycled material
- Medium durability

Advantage:

- Conceals dirt
- 8-ply for outstanding tear resistance
- Perforated – tears off easily
- Dispenser box allows easy access and stores the mats in perfect condition



Before



After



Absorptive capacity	Length x width	Perforation width x perforation length	Suction volume (l)	Number of pieces per packet (PCS)	Delivery unit	Type description	Colour	
							69746...	Grey
High	51 x 38 cm	25.5 x 38.0 cm	84.0	100	Mat pad in dispenser box	MAT 240	Ident. No.	240
Middle	51 x 38 cm	25.5 x 38.0 cm	82.0	125	Mat pad in dispenser box	MAT 139		139
Low	51 x 38 cm	25.5 x 38.0 cm	84.0	200	Mat pad in dispenser box	MAT 135		135

Prod. Gr. 6PA

**Rip & Fit® universal absorbent roll – multiple perforations for improved portioning****Absorbs oil, water, coolants and solvents****Application:**

For daily use for minor leaks around the machine, in drawers, on shelving or on workbenches.

Execution:

- Made from 100% polypropylene and 25% recycled material
- Medium durability
- In dispenser box

Advantage:

- Conceals dirt
- 8-ply for outstanding tear resistance
- Dispenser box allows easy access and stores the mats in perfect condition
- Horizontal and vertical perforations – obtain the perfect size without cutters

Technical data:

- Type: Universal
- Absorptive capacity: High
- Length x width: 1800 x 38 cm
- Perforation width x perforation length: 25.5 x 9.5 cm
- Suction volume: 30.0 l
- Water-repellent: No
- Antistatic: No
- Number of pieces per packet: 1 PCS
- Delivery unit: Mat roll in dispenser box
- Type description: MAT 242

	Colour		
69746...	Grey	Ident. No.	242

Prod. Gr. 6PA

**Universal 4-IN-1® absorbent mat – individual mats in a dispenser box****Absorbs oil, water, coolants and solvents****Application:**

1 product for 4 applications: absorbent mat, absorbent roll, absorbent sock or towel.

Execution:

- Made from 100% polypropylene and 25% recycled material
- Excellent durability

Advantage:

- Conceals dirt
- 8-ply for outstanding tear resistance
- Dispenser box allows easy access and stores the mats in perfect condition
- Multiple perforations for improved portioning

Technical data:

- Type: Universal
- Absorptive capacity: High
- Length x width: 2400 x 41 cm
- Perforation width x perforation length: 25.0 x 41.0 cm
- Suction volume: 35.0 l
- Number of pieces per packet: 1 PCS
- Delivery unit: Mat roll in dispenser box
- Type description: MAT 284



	Colour		
69746...	Grey	Ident. No.	284

Prod. Gr. 6PA

**BLUE® absorbent mat – as a roll or individual mats in a box****Absorbs large quantities of oil, water, coolant and solvent****Application:**

Extra-absorbent mat for absorbing large quantities of liquids

Execution:

- Made of 75% natural and recycled fibres

Advantage:

- Higher absorbency means longer replacement intervals
- Reliably retains liquids

Technical data:

- Absorptive capacity: High



Ident. No. 102–103
With PIG BLUE® mats, you can remove large spills quickly!

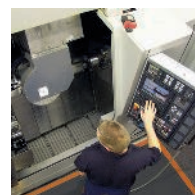
Length x width	Perforation width x perforation length	Suction volume (l)	Number of pieces per packet (PCS)	Delivery unit	Colour		Blue	
					Type description	69746...	Ident. No.	
48 x 38 cm	48 x 19 cm	129.0	100	Mat pad in box	BLU 101	101		●
4600 x 76 cm	48 x 38 cm	242.5	1	Mat roll in bag	BLU 102	102		●
4600 x 38 cm	48 x 38 cm	121.3	1	Mat roll in bag	BLU 103	103		●

Prod. Gr. 6PA

Accessories for			69746 102	69746 103
69746...	Free-standing roll holder GEN 182 Width-adjustable from 41 to 84 cm	Ident. No.	182 ○	182 ○
Accessories for			69746 102	69746 103
69746...	Wall-mounted roll holder, MAT 293 For rolls up to 91 cm in width	Ident. No.	293 ○	293 ○

Source: Hahn+Kolb Werkzeuge GmbH
Technical data subject to change.
Availability subject to country specific rules and regulations.

www.iconridge.com



ICON RIDGE



Elephant absorbent floor mat – with zig-zag seams for greater stability and durability

Absorbs oil, water, coolants and solvents

Application:

Keeps highly frequented corridors clean and slip-proof

Execution:

- 100% polypropylene and 25% recycled material
- Excellent durability

Advantage:

- Extremely hard-wearing and resistant

Technical data:

- Type: Universal Elephant
- Absorptive capacity: High
- Length x width: 4600 x 84 cm
- Suction volume: 87.0 l
- Number of pieces per packet: 1 PCS
- Delivery unit: Mat roll in bag
- Type description: MAT 234



	Colour		
69746...	Grey	Ident. No.	234

Prod. Gr. 6PA



TRAFFIC MAT® runner – ideal for absorbing liquids in heavily used areas

absorbs oils, water, coolants and solvents

Application:

Suitable for large workstations, passageways and routes used by pedestrians and vehicles – even areas with heavy forklift traffic!

Execution:

- Made from 100% polypropylene
- Outstanding durability
- Roll in bag

Advantage:

- Easy to cut to size

Technical data:

- Type: Universal TRAFFIC
- Absorptive capacity: Middle
- Length x width: 9100 x 91 cm
- Suction volume: 148.0 l
- Number of pieces per packet: 1 PCS
- Delivery unit: Mat roll in bag
- Type description: MAT 218



	Colour	Black
	69746...	Ident. No.
	218	●

Prod. Gr. 6PA



GRIPPY FLOOR MAT® floor mats from polypropylene fibres

Absorbs oil, water, coolants and solvents

Execution:

- Absorbent layer takes up liquids and draws them away from the centre of the mat
- Interwoven fibres catch dirt and fine particles, preventing their spread
- Tested and certified (by NFSI)
- classified as slip-resistant R13 as per DIN51130 – suitable for use in work rooms and work areas with an increased risk of slipping due to grease, oil, food, debris, dust, flour, paint residues etc
- tested in accordance with BS 7976-2:2002+A1:2013, with proven low slip potential, both in wet and dry conditions
- complies with fire protection class Bfl-s1 in accordance with the requirements of BS EN 13501-1

Advantage:

- The mat has an adhesive back and stays exactly where it is placed; it does not slip, fold or tuck under; it prevents the spread of dirt, salt and moisture on the floor
- The adhesive developed by New PIG keeps the mat fully fixed to the floor but enables it to be removed easily
- No overnight floor cleaning necessary
- Very easy to lay

Technical data:

- Type: Universal Grippy
- Absorptive capacity: Middle
- Number of pieces per packet: 1 PCS



Ident. No. 362–372, 376–386, 394–396



Ident. No. 374



Ident. No. 392

			Colour	Black	Grey	Brown
Length x width	Sections per roll	Suction volume (l)	Type description	69746... Ident. No.	69746... Ident. No.	69746... Ident. No.
3000 x 91 cm	-	30.0	GRP36200	362	364	366
1530 x 91 cm	-	15.0	GRP36201	372	374	376
1520 x 91 cm	10	15.0	GRP36202	382	384	386
1530 x 91 cm	5	15.0	GRP36203	392	394	396

Prod. Gr. 6PA

pig Installation tool and cutting guide
for quick and easy laying of mats with adhesive undersides

Application:
for use as a cutting mat to avoid damage to floors when cutting
can also be used as flattening support to quickly smoothen mats with an adhesive back in a single work step

Execution:

- HDPE
- 96.5 x 15 cm

Advantage:

- for clean, precise cuts
- for perfect corners or 45° angles

Notes:
for use with our safety knife



69746... | Ident. No. 580

Prod. Gr. 6PA

pig Safety knife
with 2 replacement blades

Application:
for fast, clean cuts on mats with an adhesive back without the risk of injury from scissors or box cutters

Execution:

- 5.1 x 16.51 cm
- Handle made from plastic and rubber
- steel cutting blade

Advantage:

- low risk of injury and floor damage thanks to a recessed blade with protective edges
- easy-to-replace dull blades



69746... | Ident. No. 585

Prod. Gr. 6PA

Accessories for		69746 585
69746... Replacement blade set for safety knife Packing unit = 10 pieces	Ident. No.	588

Grippy® absorbent mat – with self-adhesive coating

Absorbs oils, water, coolants and solvents

Application:

Suitable for passageways and routes used by pedestrians and vehicles – even areas with heavy forklift traffic!

Execution:

- made of polypropylene with polyester seams
- with self-adhesive backside (proprietary glue)
- outstanding durability

Advantage:

- Full-coverage adhesive backing holds the mat in place so that it cannot bunch up, slip or be blown away
- Sticks without leaving any residue
- Zigzag seams increase stability and durability
- polyethylene coating prevents absorbed liquid escaping
- Tested and certified by the National Floor Safety Institute (NFSI)

Notes:

All adhesives have the potential to dissolve any coatings on the application surface, depending on the condition and age of the floor. If in doubt, we recommend testing the mat in a non-critical area.

Technical data:

- Type: Universal GRIPPY®
- Absorptive capacity: Middle
- Length x width: 760 x 41 cm
- Suction volume: 5 l
- Number of pieces per packet: 1 PCS
- Delivery unit: Mat roll in bag
- Type description: MAT 1625



The GRIPPY® MAT always sits securely! Does not roll or slip, even under heavy load.

Colour	Blue
69746...	Ident. No.
162	●

Prod. Gr. 6PA

Drum cover mat for 210-litre drums – for absorbing small or large quantities of liquid

Absorbs oil, water, coolants and solvents

Application:

Absorbs liquids from dripping pumps and keeps drum covers clean

Execution:

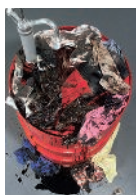
- Suitable for covers with 3/4" and 2" bung holes
- Ident. No. 244:** Made from 100% polypropylene and 25% recycled material
- Ident. No. 255:**
 - Made from synthetic fibres and 75 % recycled material
 - Extra-absorbent for soaking up large quantities of liquids

Advantage:

- Flame-retardant for added protection

Technical data:

- Absorptive capacity: Low
- Diameter: 56 cm
- Antistatic: No
- Delivery unit: Mat pad in box
- Number of pieces per packet: 25 PCS



Before



Ident. No. 244
After



Carton can be fixed on the wall as a convenient dispenser.

Type description	Suction volume per mat (l)	Colour		Grey	
		Blue	Ident. No.	Ident. No.	Ident. No.
BLU 255	1.8	255	●	-	-
MAT 244	0.5	-	-	244	●

Prod. Gr. 6PA

LITE®-DRI binder – absorbs three times its own weight

Absorbs unwanted liquids rapidly, even from uneven surfaces



Application:

Quickly absorbs unwanted liquids, even on rough surfaces

Execution:

- Made of 100% recycled cellulose

Advantage:

- The non-abrasive material does not damage the floor or machines
- No formation of dust from silicates, unlike with granules

- Bio-degradable
- Combustible

Notes:

Not suitable for use with hydrogen fluoride

Technical data:

- Suction volume per bag: 30 l
- Weight of content: 10 kg
- Recycled material: 100 %
- Type description: PLP-201



69746...	Ident. No.	201
		●

Prod. Gr. 6PA



GRIP-DRI binder – specially for outdoors

Absorbs oils, water, coolants and solvents as well as chemicals

Application:

Granules absorb all kinds of liquids, even in areas with heavy traffic.

Execution:

- Made of kieselguhr
- Fire-retardant, so also suitable for high-temperature applications
- With road approval, MPA-certified type III R

Advantage:

- Harmless and safe to use
- Dust-free and easy to sweep up

Technical data:

- Suction volume per bag: 20 l
- Weight of content: 15 kg
- Type description: PLPE 260



69746...

Ident. No.

260

Prod. Gr. 6PA



Absorbent socks – for absorbing large and very large quantities of liquid

absorbs oils, water, coolants and solvents

Application:

For clearing up leaks in tight spaces and for containing leaks

Execution:

- **Ident. No. 010-020:**
 - With fast-acting vermiculite filler
 - High absorption volume

Ident. No. 110:

- Made from 95% recycled cellulose filler
- Very high absorption volume, so ideal for major leaks

Advantage:

- Can be placed flexibly around machines, corners and in tight spaces
- Adapt to the floor and form a solid dyke



Ident. No. 110
SUPER version



Ident. No. 010-020



Ø x length	Suction volume per hose (l)	Number of pieces per packet (PCS)	Type description	Colour		Type		Light grey		Blue	
								SUPER		BLUE	
				69746...		Ident. No.		69746...		Ident. No.	
8 x 107 cm	3.8	24	PIG 210	110		●		-		-	
8 x 122 cm	2.8	20	BLUE 2048	-		-		010		●	
8 x 122 cm	2.8	40	BLUE 4048	-		-		020		●	

Prod. Gr. 6PA



Oil-Only absorbent socks – water-repellent and highly absorbent

Absorb oils, hydrocarbons and lubricants

Application:

Ident. No. 070: For everyday maintenance applications such as skimming oil-based contamination from water treatment systems, for absorbing oil from drainage channels and rivers, and for separating oil in refining processes

Ident. No. 080: For use inside buildings or outdoors, for car parks, bodies of water, waste water tanks and drains

Execution:

Ident. No. 070:

- Resistant to chemicals and therefore suitable for acid baths and phosphating tanks
- With polypropylene filler

Ident. No. 080:

- Made from 100% recycled material
- With cellulose filler

Advantage:

- Float on the water surface – even when saturated
- Ident. No. 070:**
 - UV resistant for up to 12 months
 - Meets NFPA 99 requirements for static degradation
- Ident. No. 080:** White colour for clear visual indication of absorption

Notes:

Ident. No. 080: Not suitable for use with aggressive liquids.

Technical data:

- Diameter x length: 8 x 122 cm
- Suction volume per hose: 3.8 l
- Water-repellent: Yes
- Antistatic: No



Ident. No. 070



Ident. No. 080



Number of pieces per packet (PCS)	Type description	Colour	
		Light grey	White
10	104 PS	69746... Ident. No. 070	69746... Ident. No. -
12	SKM2 10	-	080

Prod. Gr. 6PA



Emergency kit bag – for leaks up to 38 litres

In OIL-ONLY and UNIVERSAL designs

Application:

Emergency bag with various absorbent materials for smaller emergencies and for during transport.

Execution:

- Absorbs oil, water, cooling agents and solvents

Delivery:

4 absorbent socks, 28 absorbent mats, 5 disposable disposal bags, in carry bag

Technical data:

- Type description: KIT 220
- Suction volume: 35 l

69746...

Ident. No.

895

Prod. Gr. 6PA

ARE YOU LOOKING FOR PRODUCTS
THAT MEET THE TOUGHEST DEMANDS?

WE HAVE WHAT IT TAKES.

For a complete range of products that meet the
toughest demands, visit www.iconridge.com



Part cleaning devices - Your benefits



For cleaning metallic and plastic components contaminated by grease
Industrial parts cleaning and surface degreasing through manual brush cleaning.

Advantages:

- Time and money savings as the cleaner does not need to be heated up
- Enormous reduction in costs and environmentally-friendly operation thanks to multiple uses
-
- **FREE SERVICE:** Contaminated cleaning fluids are collected free of charge when a new drum is delivered. A certified waste disposal company will be responsible for collection.
-
- Here's how it works:
- The pump draws fresh cleaner in:
- Out of the centre of the drum into the hollow brush of the device.
-
- The used cleaner settles:
- It sinks to the bottom of the drum
-
- The cleaning fluid is replaced via a
- simple drum change. And the
- cycle starts again from the beginning!
-
- **You have full control over your costs with an effective, efficient**
- **and user-friendly system solution!**

IBS Scherer GmbH



Part cleaning device with closed base for 50 litre drums with head plug connection



Execution:

- Closed, compact design
- **Ident. No. 044, 047:** Industrial version device
- **Ident. No. 045:**
 - Industrial-version device
 - 150 kg carrying capacity
- **Ident. No. 045-047:**
 - including cleaner
 - GS-tested in this combination

Delivery:

Ident. No. 044: part cleaning device, pump, brush.
Ident. No. 045: Part cleaning device, pump, brush and cleaner.
Ident. No. 047: part cleaning device, pump, brush and cleaner.

Notes:

FREE SERVICE: Contaminated cleaning fluids are collected free of charge when a new drum is delivered. A certified waste disposal company will be responsible for collection.

Technical data:

- Width x depth x height (external dimension): 800 x 500 x 1100 mm
- Working height: 895 mm
- Working surface: 790 x 490 mm
- Load-carrying capacity: 150 kg
- Suitable for container: 50 litres
- Container connection: Top plug
- Operating voltage: 230 V/AC/DC
- Colour: Blue



Ident. No. 045



Version			Solo device	With Purgasol	With EL/Extra
Part cleaning device with closed base	50058...	Ident. No.	044	045	047
EL/Extra cleaner	50058...	Ident. No.	060	-	060
Purgasol cleaner	50058...	Ident. No.	055	055	-

Prod. Gr. 559



Part cleaning device, mobile for 50 litre drums with head plug connection



Application:

Ident. No. 035–036: for mobile cleaning at varying locations – with a large work surface.

Ident. No. 037: For mobile cleaning at varying locations – with a large work surface.

Execution:

- **Ident. No. 035, 037:**
 - Device can be moved on wheels like a sack truck
 - Connection of a 50 l cleaning agent drum by means of a head tap connection
- **Ident. No. 036:**
 - device can be moved on wheels like a sack truck
 - connection of a 50-l cleaning agent drum by means of a head tap connection
- **Ident. No. 036–037:**
 - including cleaner
 - GS-tested in this combination

Advantage:

- **Ident. No. 035–036:**
 - portable and manoeuvrable
 - the leverage of a sack truck makes it user-friendly and easy to operate
- **Ident. No. 037:**
 - Portable and manoeuvrable
 - The leverage of a sack truck makes it user-friendly and easy to operate

Delivery:

Ident. No. 035: part cleaning device, pump, brush.

Ident. No. 036–037: part cleaning device, pump, brush and cleaner.

Notes:

Ident. No. 035, 037: FREE SERVICE: Contaminated cleaning fluids are collected free of charge when a new drum is delivered. A certified waste disposal company will be responsible for collection.

Ident. No. 036: FREE SERVICE: contaminated cleaning fluids are collected free of charge when a new drum is delivered. a certified waste disposal company will be responsible for collection.

Technical data:

- Width x depth x height (external dimension): 800 x 615 x 1020 mm
- Working height: 920 mm
- Working surface: 790 x 490 mm
- Load-carrying capacity: 100 kg
- Suitable for container: 50 litres
- Container connection: Top plug
- Operating voltage: 230 V/AC/DC
- Colour: Blue



Ident. No. 036

Version			Solo device	With Purgasol	With EL/Extra
Part cleaning device, mobile	50058...	Ident. No.	035	036	037
Purgasol cleaner	50058...	Ident. No.	055	055	-
EL/Extra cleaner	50058...	Ident. No.	060	-	060

Prod. Gr. 559



Part cleaning device with large work surface and high load-bearing capacity for 200 litre drums with jacket plug connection



Application:

Ident. No. 025–026: ideal for cleaning, especially large and heavy parts.

Ident. No. 027: Ideal for cleaning especially large and heavy parts.

Execution:

- **Ident. No. 025, 027:** Connection of a 200 l cleaning agent drum by means of a mantle tap connection
- **Ident. No. 025–026:** at workbench height with very large work surface.
- **Ident. No. 026:**
 - connection of a 200-l cleaning agent drum by means of a mantle tap connection
 - including cleaner
- **Ident. No. 026–027:** GS-tested in this combination
- **Ident. No. 027:**
 - At workbench height with very large work surface.
 - Including cleaner

Advantage:

- **Ident. No. 025–026:** strong, solid construction for durability.
- **Ident. No. 027:** Strong, solid construction for durability.

Delivery:

Ident. No. 025: part cleaning device, pump, brush and collection tray.

Ident. No. 026–027: part cleaning device, pump, brush, collection tray and cleaner.

Notes:

Ident. No. 025, 027: FREE SERVICE: Contaminated cleaning fluids are collected free of charge when a new drum is delivered. A certified waste disposal company will be responsible for collection.

Ident. No. 026: FREE SERVICE: contaminated cleaning fluids are collected free of charge when a new drum is delivered. a certified waste disposal company will be responsible for collection.

Technical data:

- Width x depth x height (external dimension): 1145 x 670 x 1050 mm
- Working height: 870 mm
- Working surface: 1135 x 660 mm
- Load-carrying capacity: 250 kg
- Suitable for container: 200 litres
- Container connection: Sheath plug
- Operating voltage: 230 V/AC/DC
- Colour: Blue



Ident. No. 026

Version			Solo device	With Purgasol	With EL/Extra
Part cleaning device with large work surface and high load-bearing capacity	50058...	Ident. No.	025	026	027
Purgasol cleaner	50058...	Ident. No.	057	057	-
EL/Extra cleaner	50058...	Ident. No.	062	-	062

Prod. Gr. 559

Source: Hahn+Kolb Werkzeuge GmbH

Technical data subject to change.

Availability subject to country specific rules and regulations.


Application:

For manual cleaning using a part cleaning device.

Technical data:

- Number of pieces per packet: 5

Execution:

- Special plastic hollow brush, with plastic bristles
- Resistant to special cleaning agents

Version		Coarse	Fein
50058...	Ident. No.	071	073
		●	●

Prod. Gr. 559


H K Absorber cabinet with compressed air powered extraction system
for cleanliness and air pollution control in the workplace

Application:

chips and droplets are vacuumed from the interior of the container. this way, the absorber cabinet ensures clean floors and air. ideal for any workplace where workpieces and tools must be kept clean.

Execution:

- Stable and sturdy sheet steel housing with built-in injection system (operated with compressed air) and collection container
- The compressed-air gun and the injection system are actuated with a foot valve attached on the front side, so that only as much compressed air as required for the cleaning is consumed.
- The parts to be cleaned are simply blown off on the grating with the compressed-air gun
- portable like a sack truck with two wheels on the rear side
- The injector system extracts all contamination downwards into a collection container which must be emptied on a regular basis

Advantage:

- Swarf, oil and coolant residues are no longer simply blown out into the premises, but are purposely sucked into the collecting container provided.
- No emulsion or oil vapour in the air—no dust and no chips flying around—no contamination of the workplace
- Rapid connection to existing compressed-air system
- can be installed directly in or near machines so that the processed workpieces and parts can be immediately blown off

Delivery:

Fully ready for use with connection for compressed-air quick-release coupling (plug-in nipple DN 7.2), incl. compressed-air gun and hose

Technical data:

- Height: 1300 mm
- Depth: 500 mm
- Working height: 850 mm
- Clear opening depth: 480 mm
- Min./max. working pressure: 5-10 bar
- Min./max. sound-pressure-level: 60-70 dB
- Surface: Powder-coated



Ident. No. 003



Width (mm)				500	1000
Load-carrying capacity of grating (kg)				50	100
Clear opening width (mm)				425	920
Absorber cabinet with compressed air powered extraction system	50058...	Colour			
		Light grey RAL 7035	Ident. No.	002	004
				●	●
spare filter mat	50058...	Anthracite grey RAL 7016	Ident. No.	003	005
				●	○
spare filter mat	50058...		Ident. No.	008	008
				●	●

Prod. Gr. 559



Other helpful equipment elements for absorber cabinets

EXACTLY AS YOU NEED.

not yet 100% suitable for you? we can supply you with absorber cabinets tailored exactly to your needs. the following options have been made

many times. ask us!

technical hotline: +49(0)7141 498 5819



TEKA Mobile welding fume extractor

With filter and flexible extractor arm, hose version, >99 % filtration efficiency

Application:

Ident. No. 011: For extracting fumes, dust and also gases that are released during welding processes for cutting and joining when machining unalloyed steels, including high-alloy chromium/nickel steels.

Ident. No. 020: For extracting fumes during welding work with unalloyed steels and precious metals.

Execution:

- With flexible suction arm in hose version
- With filter
- Suction arms can be swivelled through 360° and can be moved into any desired position, which is self-supporting
- **Ident. No. 011:**
 - When the filter is saturated, an indicator lamp shows that a filter change is necessary
 - The particles and gases are filtered out of the air stream in a multi-stage filtering process and the clean air is fed back to the working area
 - Filter elements are accessible via a maintenance hatch and therefore can be easily and quickly removed
- **Ident. No. 020:**
 - Monitoring of the volume flow and filter indicates when a filter change is necessary

- Thanks to effective air guidance in the unit, the operator cannot come into contact with the harmful substances
- Air discharge on the rear of the unit is via an outlet grille facing upwards, rendering undetectable disruptive air flow at a distance of 1 m
- With operating hours counter
- With powerful fan using high negative pressure, which guarantees a high volume flow even when the filter is saturated

Advantage:

- **Ident. No. 011:** Tested based on DIN EN ISO 15012-1 (2005) and IFA (previously BGIA) certified (IFA no. 1102002) for welding fume class W3
- **Ident. No. 020:**
 - Complies with the safety requirements for equipment in welding fume class W3 (highly alloyed steels)
 - When used as intended, the system can be used for air circulation, as the prerequisites for exemption clauses in accordance with the new statutory German Hazardous Materials Ordinance (GefStoffV) are satisfied
 - Seal seat raising unit guarantees complete seal integrity and thus the filtration efficiency of the filter equipment



Ident. No. 011



Ident. No. 020



Nominal voltage (V/AC)		230	400
Max. idle speed (U/min(rpm))		2800	2800
Motor output (kW)		1.1	1.1
Extraction arm (PCS)		1	1
Nominal width of extraction arm (mm)		150	150
Max. suction capacity (m³/h)		1000	1250
Overhang (mm)		3000	3000
Air supply quantity (m³/h)		2500	2500
Roll Ø (mm)		75	125
Number of fixed rollers (PCS)		2	2
Number of steering rollers (PCS)		2	2
Energy efficiency (%)		99	99
Length x width x height		580 x 580 x 900 mm	665 x 681 x 995 mm
Weight (kg)		80	130
75736...	Ident. No.	011 (○)*	020 (○)*

Prod. Gr. 759

Accessories for			75736 011	75736 020
75736...	Coarse filter set	Ident. No.	290 (○)*	300 (○)*
75736...	Pre-filter	Ident. No.	320 (○)*	-
75736...	Activated carbon filter	Ident. No.	340 (○)*	-
75736...	Main filter	Ident. No.	400 (○)*	410 (○)*



storing hazardous materials properly

the German regulations concerning the storage of substances hazardous to water are:

- the WHG (Wasserhaushaltsgesetz – German water resources law) sections 62 and 63
- the AwSV (Verordnung über Anlagen zum Umgang mit wassergefährdenden Stoffen – German ordinance on installations for the handling of substances hazardous to waters)

explanation of relevant hazardous material symbols according to GHS/Reach:

classification	hazard symbol	H set	hazard category
acute		H 400	GHS category 1
chronic		H 410	GHS category 1
chronic		H 411	GHS category 2
chronic		H 412	GHS category 3
chronic		H 413	GHS category 4

classification	hazard symbol	H set	hazard category
corrosive action on metals		H 290	GHS category 5
caustic effect on the skin/skin irritation		H 314	GHS category 5
serious eye damage		H 318	GHS category 5

classification	hazard symbol	criteria	H set	hazard category
extremely flammable		flash point < 23°C boiling point < 35°C	H 400	GHS category 1
easily flammable		flash point < 23°C boiling point < 35°C	H 412	GHS category 3
flammable		flash point >23°C <60°C	H 413	GHS category 4

GHS – Globally Harmonised System of Classification and Labelling of Chemicals.

the GHS is a globally harmonised system for the classification of chemicals as well as their labelling on packaging and safety data sheets.

REACH

regulates the registration, evaluation, authorisation and restriction of chemical substances.

which collection tray for which substances?

steel collecting trays

ÜBER-EINSTIMMUNGS-ERKLÄRUNG (ÜHP)
gemäß Bauprodukt-Verordnung A
Teil 1, DIBt, Berlin

for flammable liquids of GHS categories 1-3

for water-hazardous liquids of GHS categories 1-4

PE collection tray

ÜBER-EINSTIMMUNGS-ERKLÄRUNG (ÜHP)
gemäß Bauprodukt-Verordnung A
Teil 1, DIBt, Berlin

for corrosive liquids

how much must be collected?

- size of largest container
- at least 10 % of the total stored quantity
- 100 % in water protection areas

all data for Germany. non-binding and not intended to be exhaustive. observe the laws and regulations of your country.

choose your preferred colour (no extra charge) for products with this logo:



RAL 2000	RAL 3000	RAL 6011	RAL 7005	RAL 5012
yellow orange	flame red	reseda green	mouse grey	light blue

Collection tray for small containers

Steel, galvanised



ÜBER-
EINSTIMMUNGS-
ERKLÄRUNG (ÜHP)
gemäß Bauregelleiste A
Teil 1, DIBt, Berlin

**Application:**

For the proper and safe storage of small cask trays, approved for inflammable liquids of GHS categories 1–3 as well as water-hazardous liquids of GHS categories 1–4.

Execution:

- Galvanised 3 mm sheet steel design

Technical data:

- Declaration of conformity in acc. with StawaR: Yes



Ident. No. 022, 026, 030, 034, 038
(Without containers)



Ident. No. 024, 028, 032, 036, 040
(Without cans, canisters, containers)

Collection volume (l)	Length x width x height	Version	Without perforated sheet grate	With perforated sheet grate
		Surface	Galvanised	Galvanised
			50060... Ident. No.	50060... Ident. No.
20	940 x 370 x 60 mm	022	○	024 ○
25	940 x 470 x 60 mm	026	○	028 ○
30	1000 x 600 x 70 mm	030	○	032 ○
40	1390 x 600 x 60 mm	034	○	036 ○
60	1850 x 600 x 60 mm	038	○	040 ○

Prod. Gr. 5Al

Collection tray for small containers

Galvanised steel, suitable for use with Euro pallets



ÜBER-
EINSTIMMUNGS-
ERKLÄRUNG (ÜHP)
gemäß Bauregelleiste A
Teil 1, DIBt, Berlin

**Application:**

For the proper and safe storage of small containers, approved for inflammable liquids of GHS categories 1–3 as well as water-hazardous liquids of GHS categories 1–4. Ideal for storing small containers on pallets.

Execution:

- Galvanised 3-mm sheet steel design

Technical data:

- Declaration of conformity in acc. with StawaR: Yes



Combination of: 2 x ref. no. 311, 1 x ref. no. 313 +
perforated metal plate



Ref. no. 315

Collection volume (l)	Length x width x height	Surface	Galvanised
			50060... Ident. No.
20	600 x 400 x 120 mm	311	○
40	800 x 600 x 120 mm	313	○
60	1200 x 800 x 100 mm	315	○

Prod. Gr. 5Al

➡ Perforated metal plate on request

Collection tray for 60-litre drums

Made from steel, with grating



Application:

For the proper and safe storage of drums, approved for inflammable liquids of GHS categories 1–3 as well as water-hazardous liquids of GHS categories 1–4.

Execution:

- 3 mm thick welded sheet steel structure
- With galvanised grating (carrying capacity 1000 kg/m²)
- With support feet, 100 mm ground clearance

Technical data:

- Declaration of conformity in acc. with StawaR: Yes



Ident. No. 065 (without drums and casks)

				Surface Colour	Lacquered Flame red RAL 3000		Lacquered Optional		Galvanised	
					50060... Ident. No.		50060... Ident. No.		50060... Ident. No.	
With grating	Collection volume (l)	Length x width x height	Max. number of 60-litre containers (PCS)							
Yes	61	800 x 500 x 290 mm	2		061	○	067	○	062	○
Yes	61	900 x 800 x 220 mm	4		063	○	068	○	064	○
Yes	74	1300 x 800 x 205 mm	6		065	○	069	○	066	○

Prod. Gr. 5AI

Steel collection trays, galvanised

option of with or without grating, for 60 l and 200 l drums (max. 4 200 l drums)



Application:

Regulation-compliant storage of drums, also combinable with small casks, for flammable liquids in GHS categories 1–3 and for liquids presenting a water contamination risk in GHS categories 1–4.

Execution:

- Design made of 3 mm steel sheet
- 100 mm ground clearance
- Transportable using forklift trucks
- optionally with or without galvanised grating (carrying capacity 1000 kg/m²)

Technical data:

- Declaration of conformity in acc. with StawaR: Yes



Ident. No. 042 (without drums)

				Surface	Galvanised	
					50060... Ident. No.	
With grating	Collection volume (l)	Length x width x height	Max. number of 200-litre containers (PCS)			
No	224	1200 x 800 x 360 mm	-		041	○
No	230	1200 x 1200 x 285 mm	-		042	○
No	414	1200 x 1200 x 415 mm	-		043	○
Yes	215	1200 x 800 x 360 mm	2		044	○
Yes	216	1200 x 1200 x 285 mm	4		045	○
Yes	400	1200 x 1200 x 415 mm	4		046	○

Prod. Gr. 5AI

Collection tray for 200 l drums

Made from steel, with grating



ÜBER-
EINSTIMMUNGS-
ERKLÄRUNG (ÜHP)
gemäß Baugewichte A
Teil 1, DAB, Berlin



Application:

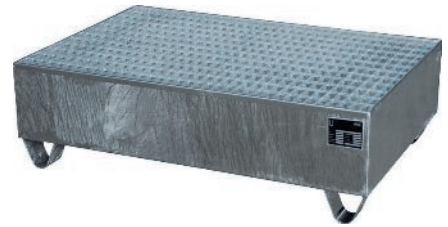
For the proper and safe storage of drums, approved for inflammable liquids of GHS categories 1-3 as well as water-hazardous liquids of GHS categories 1-4.

Execution:

- 3-mm thick welded sheet steel structure
- With galvanised grating (carrying capacity 1000 kg/m²)
- With support feet, 100 mm ground clearance

Technical data:

- Declaration of conformity in acc. with StawaR: Yes



Ident. No. 221-222, 224-226

				Surface	Lacquered	Galvanised
				Colour	Flame red RAL 3000	
With grating	Collection volume (l)	Length x width x height	Max. number of 200-litre containers (PCS)	50060...	Ident. No.	50060...
Yes	215	1200 x 800 x 360 mm	2	221	○	222
Yes	216	1200 x 1200 x 285 mm	4	223	○	224
Yes	222	2400 x 800 x 250 mm	4	225	○	226

Prod. Gr. 5Al

Collection tray for 200-litre drums

Steel, conical design, stackable



ÜBER-
EINSTIMMUNGS-
ERKLÄRUNG (ÜHP)
gemäß Baugewichte A
Teil 1, DAB, Berlin



Application:

Regulation-compliant storage of drums and small casks, combinable for flammable liquids in GHS categories 1-3 and for liquids presenting a water contamination risk in GHS categories 1-4 in drums.

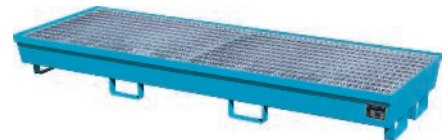
Execution:

- 3-mm thick welded sheet steel structure
- 100 mm ground clearance

- Conical design, can be stacked inside each other (without grating)
- Reinforcing edge profiles on both sides
- Transportable using forklift trucks
- Optionally with or without galvanised grating (carrying capacity 1000 kg/m²)

Technical data:

- Declaration of conformity in acc. with StawaR: Yes



Ident. No. 255

				Surface	Lacquered	Galvanised
				Colour	Light blue RAL 5012	
With grating	Collection volume (l)	Length x width x height	Max. number of 200-litre containers (PCS)	50060...	Ident. No.	50060...
Yes	215	800 x 800 x 545 mm	1	252	○	272
Yes	225	1200 x 800 x 415 mm	2	253	○	273
Yes	245	1200 x 1200 x 335 mm	4	254	○	274
Yes	233	2400 x 800 x 285 mm	4	255	○	275
No	229	800 x 800 x 545 mm	1	256	○	276
No	246	1200 x 800 x 415 mm	2	257	○	277
No	280	1200 x 1200 x 335 mm	4	258	○	278
No	280	2400 x 800 x 285 mm	4	259	○	279

Prod. Gr. 5Al

Collection tray for 200 l drums

Steel, with grating, high storage capacity



ÜBER-
EINSTIMMUNGS-
ERKLÄRUNG (ÜHP)
gemäß Baugewichte A
Teil 1, DAB, Berlin



Application:

Storage of drums and small containers in line with regulations. Approved for flammable liquids in GHS categories 1-3, for liquids which pose a hazard to water in GHS categories 1-4.

Execution:

- 3-mm thick welded sheet steel structure
- 100 mm ground clearance
- With galvanised grating (carrying capacity 1000 kg/2)

Technical data:

- Declaration of conformity in acc. with StawaR: Yes



				Surface	Lacquered	Galvanised
				Colour	Light blue RAL 5012	
With grating	Collection volume (l)	Length x width x height	Max. number of 200-litre containers (PCS)	50060...	Ident. No.	50060...
Yes	240	2650 x 1300 x 210 mm	8	230	○	232
Yes	240	3250 x 1300 x 190 mm	10	233	○	235
Yes	335	3880 x 1300 x 190 mm	12	236	○	238

Prod. Gr. 5Al

Source: Hahn+Kolb Werkzeuge GmbH

Technical data subject to change.

Availability subject to country specific rules and regulations.

www.iconridge.com

Collection tray for IBC containers

Steel, with grating



Application:

Prescribed storage of IBC containers and drums, for flammable liquids in GHS categories 1-3 and liquids which pose a hazard to water in GHS categories 1-4.

- With galvanised grating (carrying capacity 1000 kg/m²)
- declaration of conformity (ÜHP) pursuant to StawaR



Ident. No. 283 (without containers)

Execution:

- 3-mm thick welded sheet steel structure
- 100 mm ground clearance

Technical data:

- Declaration of conformity in acc. with StawaR: Yes

						Surface	Lacquered		Galvanised	
						Colour	Light blue RAL 5012			
With grating	With bottling attachment	Collection volume (l)	Length x width x height	Max. number of 200-litre containers (PCS)	Max. number of 1000-litre containers (IBC) (PCS)		50060... Ident. No.		50060... Ident. No.	
Yes	No	1000	1460 x 1460 x 620 mm	-	1	280	○	288	○	
Yes	No	1000	2650 x 1300 x 435 mm	-	2	281	○	289	○	
Yes	No	1000	2690 x 1650 x 375 mm	10	2	282	○	290	○	
Yes	No	1000	3850 x 1300 x 340 mm	-	3	283	○	291	○	

Prod. Gr. 5AI

Collection tray for shelving system

Steel



Application:

for adjusting in common pallet shelving systems. for the proper and safe storage of barrels for flammable liquids in GHS categories 1-3 and liquids which pose a hazard to water in GHS categories 1-4.

Execution:

- 3-mm thick welded sheet steel structure
- 100 mm ground clearance

Technical data:

- Declaration of conformity in acc. with StawaR: Yes



Example application



Ident. No. 465

				Surface	Lacquered		Galvanised	
				Colour	Light blue RAL 5012			
With grating	Collection volume (l)	Length x width x height	For compartment width (mm)		50060... Ident. No.		50060... Ident. No.	
Yes	240	1750 x 1300 x 250 mm	1800	453	○	455	○	
Yes	240	2150 x 1300 x 225 mm	2200	459	○	461	○	
Yes	1000	2150 x 1300 x 505 mm	2200	465	○	467	○	
Yes	240	2650 x 1300 x 206 mm	2700	471	○	473	○	
Yes	540	2650 x 1300 x 300 mm	2700	477	○	479	○	
Yes	1000	2650 x 1300 x 435 mm	2700	483	○	485	○	

Prod. Gr. 5AI

**Application:**

for adjusting in common pallet shelving systems.

for the proper and safe storage of barrels for flammable liquids in GHS categories 1-3 and liquids which pose a hazard to water in GHS categories 1-4.

Execution:

- 3-mm thick welded sheet steel structure
- 100 mm ground clearance

Technical data:

- Declaration of conformity in acc. with StawaR: Yes

With grating	Collection volume (l)	Length x width x height	For compartment width (mm)	Surface	Lacquered	Galvanised
				Colour	Light blue RAL 5012	
					50060... Ident. No.	50060... Ident. No.
No	240	1750 x 1300 x 250 mm	1800		450	452
No	240	2150 x 1300 x 225 mm	2200		456	458
No	1000	2150 x 1300 x 505 mm	2200		462	464
No	240	2650 x 1300 x 206 mm	2700		468	470
No	540	2650 x 1300 x 300 mm	2700		474	476
No	1000	2650 x 1300 x 435 mm	2700		480	482

Prod. Gr. 5Al

Mobile collection trays for 60-litre and 200-litre drums**Made from steel****Application:**

For safe storage and filling and for mobile applications. Approved for flammable liquids in GHS categories 1-3 and liquids which pose a hazard to water in GHS categories 1-4.

Execution:

- 3-mm thick welded sheet steel structure
- With removable, galvanised grating
- Optional drum support for horizontal storage of drums and for filling
- 2 steering rollers and 2 fixed castors made from polyamide, 1 steering roller with locking device

- **Ident. No. 611-616:** Roller Ø 100 mm, structural height 125 mm
- **Ident. No. 621-686:** Roller Ø 180 mm, structural height 220 mm
- **Ident. No. 671-686:** With profiled edges on both sides - therefore particularly robust

Technical data:

- With container rest: No
- With sliding handle: Yes
- Declaration of conformity in acc. with StawaR: Yes



Ident. No. 681

With grating	Collection volume (l)	Length x width x height	Max. number of 60-litre containers (PCS)	Max. number of 200-litre containers (PCS)	Surface	Lacquered	Galvanised
					Colour	Flame red RAL 3000	
						50060... Ident. No.	50060... Ident. No.
Yes	61	800 x 500 x 415 mm	2	-		611	616
Yes	203	800 x 800 x 615 mm	-	1		621	626
Yes	215	1200 x 800 x 510 mm	-	2		631	636
Yes	202	1800 x 800 x 430 mm	-	3		641	646
Yes	215	800 x 800 x 570 mm	-	1		671	676
Yes	225	1200 x 800 x 570 mm	-	2		681	686

Prod. Gr. 5Al

Collection tray for small containers**Made from PE, suitable for Euro pallets****Application:**

Storage of small containers in line with regulations. Resistant to acids, alkaline solutions and oils and other non-flammable media.

Execution:

- Constructed from robust polyethylene
- Collection trays are combinable and matched to pallet dimensions



Ident. No. 702, 710

With grating	Collection volume (l)	Length x width x height	Load-carrying capacity (kg)	Colour	Blue
					50060... Ident. No.
No	20	600 x 400 x 170 mm	55		702
No	30	800 x 400 x 170 mm	55		703
No	40	800 x 600 x 170 mm	105		704
No	60	1000 x 600 x 175 mm	205		706
No	100	1200 x 800 x 175 mm	205		710

Prod. Gr. 5Al



(Without container or perforated grating)

Perforated grating for PE small container trays

Technical data:

- Material: PE - Polyethylene

50060...	suitable for dimensions: 600 x 400 mm	Ident. No.	712
50060...	suitable for dimensions: 800 x 400 mm	Ident. No.	713
50060...	suitable for dimensions: 800 x 600 mm	Ident. No.	714
50060...	suitable for dimensions: 1000 x 600 mm	Ident. No.	716
50060...	suitable for dimensions: 1200 x 800 mm	Ident. No.	711

Prod. Gr. 5AI

Collection tray for 200 l drums

Made from PE



Application:

Storage of 200-l drums in line with regulations. Resistant to acids, alkaline solutions and oils and other non-flammable media.

Execution:

- Constructed from robust polyethylene
- Collection trays are combinable and matched to pallet dimensions

- With PE pallet
- Ident. No. 721–723:**
 - Fork pockets for forklift trucks and pallet trucks
 - Clearance on two sides
- Ident. No. 724–725:**
 - Fork pockets for fork lift trucks and pallet trucks
 - Fork lift clearance on all sides



Ident. No. 723



Collection volume (l)	Length x width x height	Max. number of 200-litre containers (PCS)	Load-carrying capacity (kg)	Colour	
				Blue	Ident. No.
240	1220 x 820 x 330 mm	2	650	721	○
230	1280 x 1280 x 275 mm	4	1250	722	○
410	1310 x 1310 x 370 mm	4	1250	723	○
230	1220 x 820 x 450 mm	2	650	724	○
250	1220 x 1220 x 390 mm	4	1300	725	○

Prod. Gr. 5AI

MORE THAN 60,000 PRODUCTS FOR MAXIMUM INNOVATION.

WE HAVE WHAT IT TAKES.

For a complete range of products that meet the toughest demands, visit www.iconridge.com

Collection tray for 1000-litre IBC containers

Made from PE



Application:

Storage of IBC containers in line with regulations. Resistant to acids, alkaline solutions and oils and other non-flammable media.

Execution:

- Constructed from robust polyethylene
- Collection trays are combinable and matched to pallet dimensions
- Fork pockets for forklift trucks and pallet trucks
- Ident. No. 741–743: With PE pallet



Ident. No. 732



Ident. No. 741

Collection volume (l)	Length x width x height	Max. number of 200-litre containers (PCS)	Max. number of 1000-litre containers (IBC) (PCS)	Load-carrying capacity (kg)	Colour	Blue
1125	1590 x 1455 x 715 mm	-	1	1500	50060...	Ident. No.
1150	2340 x 1360 x 510 mm	-	2	2800	731	○
1100	1760 x 1350 x 710 mm	-	1	1500	732	○
1140	2560 x 1350 x 510 mm	8	2	2500	741	○
					743	○

Prod. Gr. 5AI

Floor protection tray, 78 mm overall height

With galvanised grating



Application:

Traversable floor protection trays for the storage and filling of flammable liquids in GHS categories 1-3 and liquids presenting a water contamination risk in GHS categories 1-4.

Execution:

- Surface carrying capacity 5000 kg/m²
- permissible wheel load over an area of 100 x 100 mm (forklift truck wheel load capacity) = 500 kg
- Traversable by forklift trucks
- With galvanised grating

Notes:

Deliverable in a stainless steel version or with special dimensions according to your requirements

Technical data:

- Height: 78 mm
- Declaration of conformity in acc. with StawaR: Yes
- Permissible load capacity (100 x 100 mm): 500 kg
- With grating: Yes
- Coating weight per m²: 5000 g
- Material: Sheet steel
- Surface: Galvanised



Collection volume (l)	79	112	168	235
Length (mm)	1350	1900	2850	2850
Width (mm)	1350	1350	1350	1900
50060...	Ident. No. 800	801	802	803
	○	○	○	○

Prod. Gr. 5AI

Floor protection tray, 123 mm overall height

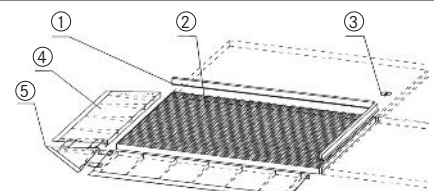
With galvanised grating

Collection volume (l)	22	40	80	178	111	223
Length (mm)	500	1000	1000	2000	2500	2500
Width (mm)	500	500	1000	1000	500	1000
50060...	Ident. No. 812	813	814	815	816	817
	○	○	○	○	○	○

Prod. Gr. 5AI

Loading ramps and connectors for floor protection trays, height 78 mm

Type	Length (mm)	Width (mm)	Height (mm)	50060...	Ident. No.
① Tray connector	1350	55	30	809	○
① Tray connector	1900	55	30	810	○
① Tray connector	2850	55	30	811	○
③ Cross-connector	-	-	20	808	○
④ Access ramp	1350	500	78	804	○
④ Access ramp	1900	500	78	805	○
④ Access ramp	2850	500	78	806	○
⑤ Access corner	500	500	78	807	○



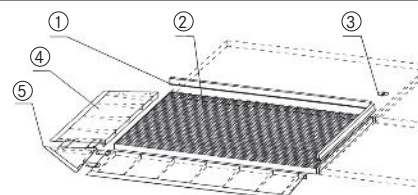
Prod. Gr. 5AI

Source: Hahn+Kolb Werkzeuge GmbH
Technical data subject to change.
Availability subject to country specific rules and regulations.

www.iconridge.com

Loading ramps and connectors for floor protection trays, height 123 mm

Type	Length (mm)	Width (mm)	Height (mm)	50060... Ident. No.	
① Tray connector	500	-	-	824	○
① Tray connector	1000	-	-	825	○
① Tray connector	2000	-	-	826	○
① Tray connector	2500	-	-	827	○
③ Cross-connector	-	-	16	823	○
④ Access ramp	500	1120	123	818	○
④ Access ramp	1000	1120	123	819	○
④ Access ramp	2000	1120	123	820	○
④ Access ramp	2500	1120	123	821	○
⑤ Access corner	1120	1120	123	822	○



Prod. Gr. 5AI

Small cask rack with shelves

Steel, galvanised



Application:

For the proper and safe storage of small casks, approved for inflammable liquids of GHS categories 1-3 as well as water-hazardous liquids of GHS categories 1-4.

Execution:

- Collection trays made from 3 mm sheet steel
- Easy mounting with the bolt-free plug-in connector system

Technical data:

- Height: 2000 mm
- Width: 1000 mm
- Depth: 600 mm
- Collection volume: 30 l
- Number of shelving unit: 1 PCS
- Load-carrying capacity per level: 150 kg
- Declaration of conformity in acc. with StawaR: Yes
- Material: Sheet steel
- Surface: Galvanised



Ident. No. 101



Ident. No. 100

Number of grating bases (PCS)	3	-
Number of 30-litre collection trays (PCS)	1	4
Version		
50061...	Shelving unit	Ident. No. 100
50061...	Add-on shelving	Ident. No. 101

Prod. Gr. 5AI

THE HIGHEST QUALITY PRODUCTS
FOR MAXIMUM EFFICIENCY.

WE HAVE WHAT IT TAKES.

For a complete range of products that meet the toughest demands, visit www.iconridge.com

Security cabinet

For substances hazardous to water, lockable



Application:

For the safe, correct storage of substances hazardous to water.

Execution:

- Stable welded sheet steel structure
- Tightly welded, powdered trays, complies with German Water Resources Act (WHG § 19)
- Tray individually height-adjustable in increments of 17 mm
- Doors with ventilation slots (square hole grid) for natural forced ventilation as well as reinforcement pockets for increased stability, approx. 125° door opening angle
- Door lockable by a turning handle with cylinder lock, incl. two keys

Delivery:

DOM locking system (suitable for HK tool cabinets, HK tool shelves, HK workbenches, HK hinged door and sliding door cabinets) and height compensation for ground unevenness deliverable upon request

Technical data:

- Height: 1950 mm
- Depth: 500 mm
- Lock type: Twist-grip lock with three-point fastening
- Load-carrying capacity per collection tray: 80 kg
- Load-carrying capacity: 400 kg



Collection tray



Ident. No. 224 optional perforated metal sheet insert



Ident. No. 210 with 4 collection trays (10 l) each equipped with perforated metal sheet inserts (no contents)



ref. no. 216 with 4 collection trays (20 l) each equipped with perforated metal sheet inserts + document insert pocket (no contents)

Width (mm)	640		1000
Number of doors (PCS)	1		2
Number of 10-litre collection trays (PCS)	4		-
Number of 20-litre collection trays (PCS)	-		4
	Colour of front	Body colour	
50069...	Gentian blue RAL 5010	Light grey RAL 7035	Ident. No. 210
50069...	Light grey RAL 7035	Light grey RAL 7035	Ident. No. 211

Prod. Gr. 5BG

Accessories for		50069 210	50069 211	50069 216	50069 217
50045...	Door opening angle 180° - extra charge for hinged-door cabinets no. 50045 104-457	Ident. No. 395	Ident. No. 395	Ident. No. 395	Ident. No. 395
50069...	Collection tray For security cabinet	Ident. No. 222	Ident. No. 222	Ident. No. 223	Ident. No. 223
50069...	Perforated metal plate insert For security cabinet no. 50069210/-214	Ident. No. 224	Ident. No. 224	-	-
50069...	Document bag For security cabinet no. 50069210-220	Ident. No. 226	Ident. No. 226	Ident. No. 226	Ident. No. 226
50069...	Perforated metal plate insert For security cabinet no. 50069216/-220	Ident. No. -	Ident. No. -	Ident. No. 225	Ident. No. 225



Oil dispenser cabinet incl. canister

With drip tray, lockable doors

Application:

For the storage and filling of canisters with liquids such as oils

Execution:

- Robust, welded sheet steel construction with hinged doors
- Bowl handle doors, can be locked simultaneously via safety cylinder lock, incl. 2 keys
- Upper cabinet housing equipped with plastic-coated cover panel 8 mm, colour grey
- Equipped with fully extending shelf, height-adjustable in increments of 30 mm
- Equipped with polyethylene canisters (HD-PE)
- 10 and 22 litres canisters can also be used on one storage level in a combination

Delivery:

Other colours available at no extra cost, see RAL colour table

Technical data:

- Width: 1022 mm
- Depth: 550 mm
- Number of doors: 2 PCS
- Load-carrying capacity per pull-out mechanism: 100 kg
- Load-carrying capacity: 1300 kg



Ident. No. 200-204



Ident. No. 208-216



Ident. No. 230 (without measuring cup)

Environment + disposal \ Hazardous materials cabinets

Height (mm)				1036	1036	1568	1568	1568
Interior height (mm)				960	960	1470	1470	1470
Number of 10-litre canisters (PCS)				-	6	6	12	-
Number of 22-litre canisters (PCS)				5	-	5	-	10
Number of fully extendible shelves (PCS)				1	1	2	2	2
Oil dispenser cabinet incl. canister		Colour of front	Body colour					
50062...		Gentian blue RAL 5010	Light grey RAL 7035	Ident. No.	200 ○	204 ○	208 ○	212 ○
Fork lift-compatible base				Ident. No.	600 ○	600 ○	600 ○	600 ○

Prod. Gr. 5BG

Canister

Food-safe polyethylene (HD-PE)

Application:

For the storage and filling of liquids

Execution:

- Acid- and chemical-resistant
- Temperature-resistant up to 73°C
- With UV protection for a longer service life

- Large filling opening diameter 88 mm
- User-friendly drain valve with wide thread 22 mm
- Locks can be sealed
- Filling level control by means of transparent design

Technical data:

- Material: PE - Polyethylene



With volume of 10 litres with additional discharge pipe Ø 18 mm

Volumetric capacity		10 l	22 l
Height (mm)		397	475
Width (mm)		154	180
Depth (mm)		302	370
50062...	Ident. No.	250 ○	252 ○

Prod. Gr. 5BG

Hazardous material roller shutter cabinets for the storage of drums and small containers

made of sheet steel, with collection tray, lockable



Application:

For the storage of flammable liquids in GHS categories 1-3 in line with regulations, for indoor and outdoor use.

Execution:

- robust sheet steel construction
- aluminium roller shutter, lockable with cylinder lock
- natural ventilation
- with general technical approval
- collection tray/intermediate shelf galvanised, unit painted

- **Ident. No. 071:** with one collection tray
- **Ident. No. 072:** with one collection tray and one grating floor
- **Ident. No. 073:** with one collection tray and one small cask tray
- **Ident. No. 074:** with 4 small cask trays

Technical data:

- Height: 1610 mm
- Width: 1294 mm
- Depth: 870 mm
- Material: Steel



Ident. No. 072



			Cabinet surface	Laquer
			Body colour	Yellow orange RAL 2000
Version	Max. number of 200-litre containers	Collection volume (l)	50061...	Ident. No.
With collection tray	2	224	071	○
With collection tray With grating	-	72	072	○
With collection tray With unit tray	-	72	073	○
With 4 unit trays	-	180	074	○

Prod. Gr. 5AI

Gas cylinder depots



Application:

For storing gas cylinders inside and outside in accordance with TRG 280.

Execution:

- Galvanised sheet steel
- With back wall, floor, intermediate shelves and cylinder lock, lockable
- Ident. No. 230-231:** Closed design with solid sheet metal doors
- Ident. No. 232-233:** Natural ventilation thanks to perforated doors and sidewalls

Delivery:

Delivered disassembled, easy assembly

Technical data:

- Material: Sheet steel
- Surface: Galvanised



Ident. No. 233 (without cylinder)



Ident. No. 230 (without cylinder)

With roof		Yes	Yes
Max. number of gas bottles with 220-mm Ø (PCS)		10	20
Length (mm)		840	1680
Width (mm)		690	690
Height (mm)		1475	1475
	Door design		
50061...	Closed	Ident. No. 230	Ident. No. 231
		○	○
50061...	Perforated	Ident. No. 232	Ident. No. 233
		○	○

Prod. Gr. 5AI

Gas bottle container for outdoor use

Application:

For storing gas cylinders outside in accordance with TRGS 510.

Execution:

- Robust frame construction with roof and base
- Lockable hinged door
- Fork pockets for picking up with a forklift truck

Delivery:

Fully assembled

Technical data:

- Material: Steel
- Surface: Galvanised



Ident. No. 027

					Gas bottle container for outdoor use								Gas bottle storage accessories	
							Double wing doors				Double wing doors		Divider	
Door design					Single wing doors		Double wing doors		Single wing doors		Double wing doors			
Design of the floor					Stud plate		Stud plate		Grating		Grating			
With roof	Max. number of gas bottles with 220-mm Ø	Length (mm)	Width (mm)	Height (mm)	50061... Ident. No.		50061... Ident. No.		50061... Ident. No.		50061... Ident. No.		50061... Ident. No.	
Yes	16	1085	1090	2115	001	○	-	-	021	○	-	-	-	-
Yes	32	2115	1155	2260	-	-	003	○	-	-	023	○	041	○
Yes	45	2115	1570	2260	-	-	005	○	-	-	025	○	043	○
Yes	60	2535	1575	2260	-	-	007	○	-	-	027	○	045	○
Yes	78	3135	1570	2260	-	-	009	○	-	-	029	○	047	○
Yes	104	3135	2170	2260	-	-	011	○	-	-	031	○	049	○

Prod. Gr. 5AI

Accessories for gas bottle container

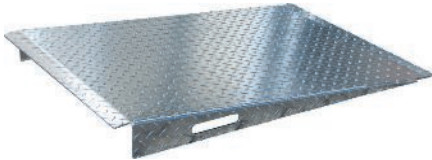
Application:
Ident. No. 051: for securing upright glass bottles with Ø 220 mm.

Notes:
Ident. No. 051: mount supports can be arranged in terms of width according to the diameter of the glass bottles

- Execution:**
- **Ident. No. 051:**
 - mount supports made from profiled sheet steel
 - perforation for accurate suspension of chain guard



Ident. No. 051



Ident. No. 055

Length (mm)			620	1140
Width (mm)			200	800
Height x width			150 x 200 mm	114 x 800 mm
50061...	bracket	Ident. No.	051 ○	-
50061...	loading ramp	Ident. No.	-	055 ○

Prod. Gr. 5AI

ARE YOU LOOKING FOR PRODUCTS
THAT MEET THE TOUGHEST DEMANDS?

WE HAVE WHAT IT TAKES.

For a complete range of products that meet the toughest demands, visit www.iconridge.com



CLASSIC line safety cabinet, type 90

Fire-resistant (FR) for 90 minutes

Application:

For safe and legally compliant storage of hazardous materials and flammable liquids in work areas in line with TRGS 510, DIN EN 14470-1 and DIN EN 14727.

Execution:

- External corpus, powder-coated sheet steel, light grey RAL 7035
- Internal corpus made of high quality decorative panels, light grey RAL 7035
- Lockable hinged doors, door front in zinc yellow RAL 1018
- Standard features: height-adjustable tray bases, base tray, 1 perforated insert made from powder coated sheet steel, height-adjustable base
- Hinged doors with standard integrated locking system and temperature monitoring, automatic self-closing in case of fire
- Ventilation and air extraction on each cabinet level
- Viewing window provided for visual check of ventilation shut-off flaps
- Tray bases and base trays are galvanically connected with the cabinet housing – avoids risk of ignition (BGR 132 TRBS 2153)
- Feet adjustable from inside and outside
- Underpinning guaranteed due to removable base

Advantage:

- Tested safety on high level: Prototype testing by MPA, TÜV, GS/CE-marks, fire resistant for 90 minutes and High Quality seal for superior design, user-friendliness and increased service life.
- Fire resistant for 90 minutes



Technical data:

- Fire resistance rating: F90
- Door design: Full-sheet panel
- External height: 2080 mm
- Depth: 595 mm
- Interior height: 1830 mm
- Internal depth: 446 mm
- With base basin: Yes
- Number of tray bases: 3 PCS
- Colour of front: Zinc yellow RAL 1018
- Body colour: Light grey RAL 7035



Single-hand hinged door system offers max. operating convenience

Model			CLASSIC M29-200660-001	CLASSIC L29-200960-001	CLASSIC ONE L	CLASSIC XL29-201260-001	CLASSIC ONE XL
Number of doors (PCS)			1	2	2	2	2
With single-handed swing door technology			Yes	No	Yes	No	Yes
External width (mm)			595	895	895	1195	1195
Internal width (mm)			499	799	799	1099	1099
CLASSIC line safety cabinet, type 90	50069...	Ident. No.	002	004	006	010	012
			○	○	○	○	○
Tray base	50069...	Ident. No.	102	104	104	110	110
			○	○	○	○	○

Prod. Gr. 5AJ