

AUTOSTAT

Positioner load capacity 0.5-6.0 kg

Type 5250, cable extension 1500 mm

Execution:

- Housing made of extremely impact-resistant special plastic
- The load is attached via a safe screw snap hook
- Braking force adjustable using lateral adjusting screw
- Safety device: Fall arrester in line with DIN 15112 included in scope of delivery, riveted special spring for retracting the load-bearing cable, insulated suspension, highly shape-stabilised structure

Technical data:

- Model: 5250 0000 01
- Type: 5250
- Min./max. load-carrying capacity: 2-7 kg
- Spring design: Riveted special mainspring

- Max. cable pull-out length: 1500 mm
- Cord in-feed restriction: Rubber ball, absorbs impacts
- Replaceable cord: No
- Cable drum material: Plastic
- Material of the housing: Plastic
- With automatic locking: No
- Suspension type: Freely rotating and pivot screw karabiner hook
- Adjustable cord length: No
- Load attachment: Screw Karabiner hook
- Spring breakage protection: No
- Colour of housing: Orange
- Housing height: 150 mm
- Housing width: 105 mm
- Housing thickness: 53 mm
- Height: 330 mm



77005...

Ident. No.

255

Prod. Gr. 786

ORION

Spring balances with load capacity of 0.5-2.0 kg

Type 5200, cable extension 2000 mm

Application:

For the ergonomic support of assembly operations. Spring pullers keep tools close at hand at all times during assembly and at the same time ensure that the workplace is tidy. The spring balances are designed in such a way that each work tool is automatically pulled back to the original position after use. Suitable for lightweight tools.

Execution:

- Housing made of impact-resistant plastic
- Carrying capacity easy to adjust via hand wheel
- Suspension with robust steel eyelet, riveted special spring
- Polyamide cable
- 2000 mm cable extension

Advantage:

- Effortless work
- Saves space, lightweight design
- Low cost

Technical data:

- With overrotation protection: No
- Number of springs: 1 PCS
- Spring design: Special mainspring
- Spring breakage protection: No
- Max. cable pull-out length: 2000 mm
- Adjustable cord length: No
- Wire cable diameter: 2 mm
- Replaceable cord: No
- Cord in-feed restriction: Rubber ball, absorbs impacts
- Cable drum material: Abrasion-proof plastic
- With automatic locking: No
- Suspension type: Ring grommet
- Load attachment: Karabiner hook
- Material of the housing: Plastic
- Housing width: 112 mm
- Housing thickness: 55 mm
- Height: 225 mm



Min./max. load-carrying capacity	0.5-1.2 kg	1-2 kg
Model	5200/1	5200/2
77005...	010	020
Ident. No.		

Prod. Gr. 794



AUTOSTAT counterweights (balancers) and spring balancers (retrievers)

For a wide range of uses in industry and trade

"The ultimate solution has a name: AUTOSTAT!"

When it comes to handling tools, equipment or auxiliary devices, AUTOSTAT series devices are unsurpassed. These devices successfully rise to every challenge – even under the most difficult conditions.

Spring balance (retractor)

Spring balances are designed so that the retraction force increases as more and more rope is pulled out. The workload is thus returned to its initial position after use by the spring balance. This keeps the workstation clear for other tools or devices. The extremely flat increase in the spring force ensures precise work.

Counterweights (balancers)

The characteristic feature of AUTOSTAT counterweights is their conical cable drum. This produces an almost uniform retraction force across the entire cable extraction. The result is that once the suspended load has been inserted, the position is retained. Furthermore, no increase in the retraction force is observed, particularly for extremely precise and sensitive work. Using Autostat counterweights facilitates effortless work, even over longer periods of time.

Automatic lock

The automatic lock causes early retraction stops at predetermined positions. It is activated by retracting the workload slowly. If the work load is returned quickly, the lock does not engage. This significantly improves work ergonomics for some applications, for example, if you do not wish to return the attached load to the initial position between different work steps. The automatic lock is available for different spring balances and counterweights. Please refer to the corresponding product descriptions.

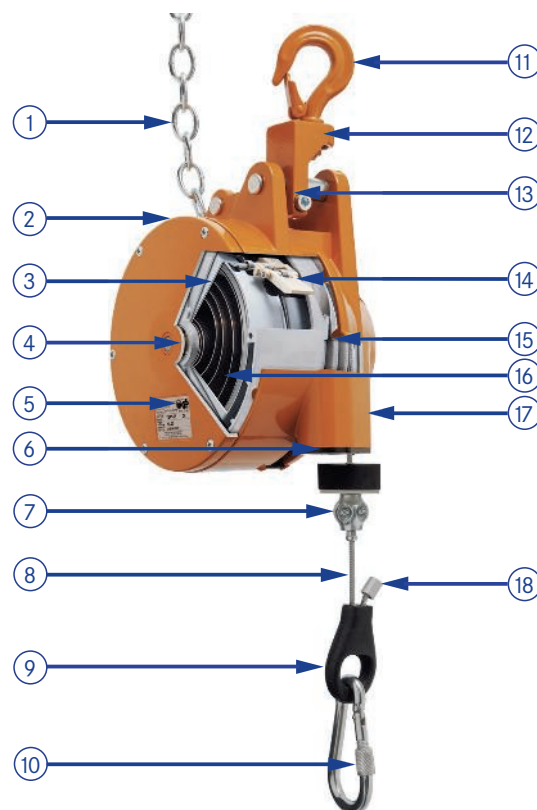
Patented freewheel

Our patented freewheel is a control guard against incorrect operation for counterweights of types 7241, 7248, 7251 and 7261. The freewheel prevents undesirable spring fractures when the spring is relaxed. It is now impossible for the device to relax too far, and this is no longer transferred to the spring. This prevents unintentional incorrect operation and significantly increases service life. This device is integrated as standard in all our devices in model series 7241, 7248, 7251 and 7261."

Advantages at a glance:

- Trouble-free workflow
- Effortless work
- Less wear on personnel and machines
- Extremely high operational safety
- Extremely easy maintenance
- Very high durability
- Fast procurement channels
- Continuous further development of our product range
- Local point of contact

- ① Safety chain as separate fall protection device
- ② High-strength aluminium alloy or impact-resistant plastic
- ③ Strapped or riveted suspension spring
- ④ Double ball bearing cable drum
- ⑤ GS mark, 5-fold safety factor throughout
- ⑥ Cable guide nozzle
- ⑦ Adjustable cable retraction limit
- ⑧ Twist-resistant cable
- ⑨ Cable clamp for infinite adjustment of cable length
- ⑩ High-quality screw-on snap hook
- ⑪ High-strength forged hook
- ⑫ Ball bearing suspension
- ⑬ Infinitely adjustable suspension to prevent wear
- ⑭ Protection against spring fracture as standard from 3 kg load capacity
- ⑮ Patented over-twist safeguard on the suspension spring
- ⑯ High-strength special suspension spring
- ⑰ Easy and safe load adjustment
- ⑱ Free cable end for extending cable – special lengths on request





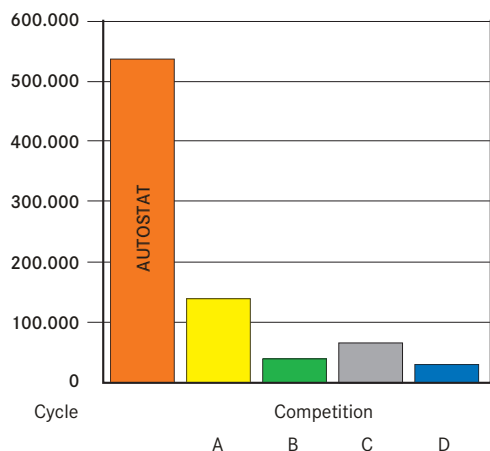
AUTOSTAT counterweights (balancers) and spring balancers (retrievers)

For a wide range of uses in industry and trade

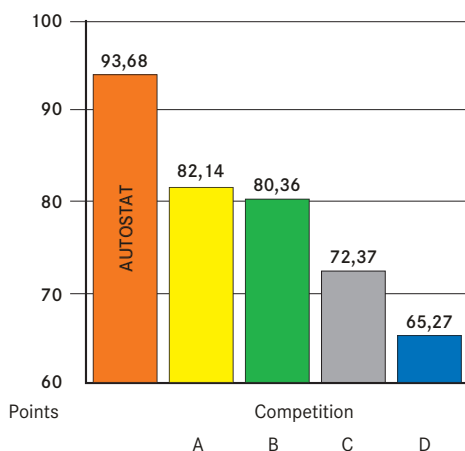
Unmatched performance

A neutral product comparison test was conducted at the University of Esslingen during research for a thesis. AUTOSTAT spring balances and balancers lead the field by a long way – why settle for less?

Evaluation of the service life until failure due to fatigue occurs:



Overall evaluation:



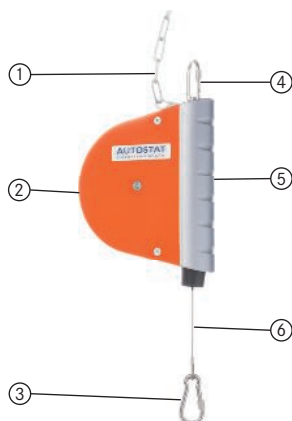
Evaluation criteria:

- Load-carrying range
- Pulling diagram
- Life
- Cable extraction
- Safety options
- Service life of cable / drum
- Life of the spring
- Availability of spare parts
- Delivery time
- Repair friendliness
- Materials used
- Product documentation
- Scope of delivery

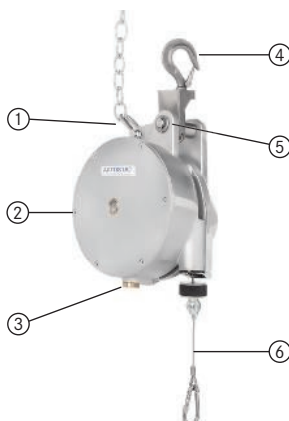


AUTOSTAT rustproof design of spring balances and counterweights

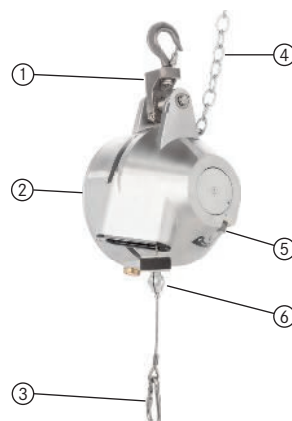
HAHN+KOLB has expanded its range for the food industry with handling systems and offers versions made entirely of rustproof material with the AUTOSTAT spring balances and counterweights (balancers). whereas aggressive cleaning agents and high-pressure cleaners for disinfection – for example in the meat-processing industry – attack the paint on systems as they age, the AUTOSTAT solutions feature a high-strength aluminium alloy. the installed moulded parts, screws, cables and snap hooks are made of stainless steel. the safety hooks and all bolts are also made of stainless steel. this makes the systems totally safe to use, while also ensuring a significantly longer period of use.



- ① stainless steel safety chain
- ② extremely impact-resistant special plastic housing
- ③ stainless steel carabiner hook
- ④ stainless steel safety hook
- ⑤ stainless steel bracket
- ⑥ stainless steel rope



- ① stainless steel shackle
- ② stainless steel fittings
- ③ brass stop
- ④ stainless steel safety hook
- ⑤ stainless steel bolt, pipe, washer and split pin
- ⑥ stainless steel rope



- ① plain aluminium holder
- ② plain high-strength aluminium alloy
- ③ stainless steel carabiner hook
- ④ stainless steel safety chain
- ⑤ stainless steel screw
- ⑥ aluminium clip

AUTOSTAT Spring pullers load capacity 0.0–2.5 kg (DIN 15112)

Type 7200, cable extension 1600 mm

Application:

For the ergonomic support of assembly operations. Spring pullers keep tools close at hand at all times during assembly and at the same time ensure that the workplace is tidy. The spring balances are designed in such a way that each work tool is automatically pulled back to the original position after use. Suitable for lightweight tools.

Execution:

- Housing made of extremely shock-resistant special plastic
- Cable drum is made of non abrasive plastic
- High-strength special motive spring
- Simple load setting secured against incorrect operation
- Cable feed limitation is impact absorbing and adjustable
- The load is attached via a safe snap hook
- Suspension with screw snap hook
- Safety device: Fall arrester in line with DIN 15112 included in scope of delivery, insulated suspension, shape-stabilised structure
- Working area: Cable extraction: 1600 mm, ropes in special lengths available on request

Advantage:

- Effortless work

Technical data:

- With overrotation protection: No
- Number of springs: 1 PCS
- Spring design: Special mainspring
- Spring breakage protection: No
- Max. cable pull-out length: 1600 mm
- Adjustable cord length: No
- Wire cable diameter: 2 mm
- Replaceable cord: No
- Cord in-feed restriction: Absorbs impacts, adjustable
- Cable drum material: Abrasion-proof plastic
- Cord material: Steel
- With automatic locking: No
- Suspension type: Freely rotating and pivot screw karabiner hook
- Load attachment: Karabiner hook
- Material of the housing: Plastic
- Housing height: 134.3 mm
- Housing width: 108 mm
- Housing thickness: 36.7 mm
- Version: Standard
- Height: 420 mm



Type 7200 0800

Min./max. load-carrying capacity					0-0.5 kg	0.3-1.5 kg
Model					7200/0	7200/1
			Colour of housing			
Spring pullers load capacity 0.0–2.5 kg	77001...		Orange	Ident. No.	300	301
Cable extension	77003...	Length: 1000 mm		Ident. No.	100	100
	77003...	Length: 2000 mm		Ident. No.	110	110

Min./max. load-carrying capacity					1.2-2.5 kg	
Model					7200/2	
			Colour of housing			
Spring pullers load capacity 0.0–2.5 kg	77001...		Orange	Ident. No.	302	
Cable extension	77003...	Length: 1000 mm		Ident. No.	100	
	77003...	Length: 2000 mm		Ident. No.	110	

Prod. Gr. 772

AUTOSTAT Rustproof design (DIN 15112)

Min./max. load-carrying capacity		0-0.5 kg	0.3-1.5 kg	1.2-2.5 kg
Model		7200/0	7200/1	7200/2
77001...	Ident. No.	593	594	595
		○	●	○

Prod. Gr. 7EB

AUTOSTAT Spring balancers with load capacity of 0.5-3.0 kg (DIN 15112)

Type 7211, cable extension 2500 mm

Application:

For the ergonomic support of assembly operations. Spring pullers keep tools close at hand at all times during assembly and at the same time ensure that the workplace is tidy. The spring balancers are designed in such a way that each work tool is automatically pulled back to the original position after use. Suitable for lightweight tools.

Execution:

- Housing made of extremely shock-resistant special plastic
- Cable drum is made of non abrasive plastic
- High-strength special motive spring
- Simple load setting secured against incorrect operation
- Cable feed limitation is impact absorbing and adjustable
- The load is attached via a safe snap hook
- Suspension with screw snap hook
- Safety device: Fall arrester in line with DIN 15112 included in scope of delivery, insulated suspension, shape-stabilised structure
- Working area: Cable extraction: 2500 mm, ropes in special lengths available on request

Advantage:

- Effortless work

Technical data:

- With overrotation protection: No
- Number of springs: 1 PCS
- Spring design: Special mainspring
- Spring breakage protection: No
- Adjustable cord length: No
- Wire cable diameter: 2 mm
- Replaceable cord: No
- Cord in-feed restriction: Absorbs impacts, adjustable
- Cable drum material: Abrasion-proof plastic
- Cord material: Steel
- With automatic locking: No
- Suspension type: Freely rotating and pivot screw karabiner hook
- Load attachment: Screw Karabiner hook
- Material of the housing: Plastic
- Housing height: 166.5 mm
- Housing width: 133 mm
- Housing thickness: 45 mm
- Version: Standard
- Height: 363 mm



Type 7211 0800 and 7212 0800

Min./max. load-carrying capacity				0.5-2 kg	1.5-3 kg
Model				7211/1	7211/2
Max. cable pull-out length (mm)				2500	2500

			Colour of housing			
Spring balancers with load capacity of 0.5-3.0 kg	77001...		Orange	Ident. No.	311	312
					●	●
Cable extension	77003...	Length: 1000 mm		Ident. No.	100	100
	77003...	Length: 2000 mm		Ident. No.	110	110
					●	●

Min./max. load-carrying capacity				3.0-5.5 kg
Model				7211/5
Max. cable pull-out length (mm)				1800

			Colour of housing		
Spring balancers with load capacity of 0.5-3.0 kg	77001...		Orange	Ident. No.	313
					●
Cable extension	77003...	Length: 1000 mm		Ident. No.	-
	77003...	Length: 2000 mm		Ident. No.	-

Prod. Gr. 772

AUTOSTAT Rustproof design (DIN 15112)

Min./max. load-carrying capacity		0.5-2 kg	1.5-3 kg
Model		7211/1	7211/2
77001...	Ident. No.	584	585
		●	●

Prod. Gr. 7EB

AUTOSTAT Spring balances with load capacity of 0.5-3.0 kg, with automatic lock

(DIN 15112)

Type 7212, cable extension 2500 mm

Execution:

- Housing made of extremely shock-resistant special plastic
- Cable drum is made of non abrasive plastic
- High-strength special motive spring
- Simple load setting secured against incorrect operation
- Cable feed limitation is impact absorbing and adjustable
- The load is attached via a safe snap hook
- Suspension with screw snap hook
- Safety device: Fall arrester in line with DIN 15112 included in scope of delivery, insulated suspension, shape-stabilised structure
- Working area: Cable extraction: 1600-2500 mm, ropes in special lengths available on request
- The automatic cable retraction stop allows the device to be locked. Locking not to be used for load change!

Advantage:

- Effortless work

Technical data:

- With overrotation protection: No
- Number of springs: 1 PCS
- Spring design: Special mainspring
- Spring breakage protection: No
- Max. cable pull-out length: 2500 mm
- Adjustable cord length: No
- Wire cable diameter: 2 mm
- Replaceable cord: No
- Cord in-feed restriction: Absorbs impacts, adjustable
- Cable drum material: Abrasion-proof plastic
- Cord material: Steel
- With automatic locking: Yes
- Suspension type: Freely rotating and pivot screw karabiner hook
- Load attachment: Screw Karabiner hook
- Material of the housing: Plastic
- Housing height: 166.5 mm
- Housing width: 133 mm
- Housing thickness: 45 mm
- Version: Standard
- Height: 363 mm



Type 7211 0800 and 7212 0800

Min./max. load-carrying capacity					0.5-2 kg	1.5-3 kg
Model					7212/1	7212/2
			Colour of housing			
Spring balances with load capacity of 0.5-3.0 kg, with automatic lock	77001...		Orange	Ident. No.	321	322
Cable extension	77003...	Length: 1000 mm		Ident. No.	100	100
	77003...	Length: 2000 mm		Ident. No.	110	110
Min./max. load-carrying capacity					3-5.5 kg	
Model					7212/5	
			Colour of housing			
Spring balances with load capacity of 0.5-3.0 kg, with automatic lock	77001...		Orange	Ident. No.	323	
Cable extension	77003...	Length: 1000 mm		Ident. No.	-	
	77003...	Length: 2000 mm		Ident. No.	-	

Prod. Gr. 772

AUTOSTAT Rustproof design (DIN 15112)

Min./max. load-carrying capacity		0.5-2 kg	1.5-3 kg
Model		7212/1	7212/2
77001...	Ident. No.	586	587

Prod. Gr. 7EB

AUTOSTAT Spring balancers with load capacity of 2.0-14.0 kg (DIN 15112)

Type 7221, cable extension 3000 mm

Application:

Can be used for following tools and devices, e.
g.: Electrical and compressed air hand machines,
engravers, exhaust hoses, compressed air devices,
paint spray guns, film welding devices

Execution:

- larger load-bearing ranges
- Housing made of extremely shock-resistant special plastic
- Suspension via a freely turning and swivelling safety snap hook
- Infinitely variable load setting via an adjusting screw with over-twist safeguard
- The load is attached via a safe screw snap hook
- Cable feed limitation is impact absorbing and adjustable
- Rope is infinitely variable in its length via a rope clamp
- If required, the cable can be replaced very easily
- Safety device: Fall arrester in line with DIN 15112 included in scope of delivery, spring safety device, high-strength and hooped special motive spring, cable drum, can be blocked, push clamp for securing the cable end
- Working area: Cable extraction: 3000 mm, ropes in special lengths available on request

Advantage:

- Effortless work

Technical data:

- With overrotation protection: Yes
- Number of springs: 1 PCS
- Spring design: Special mainspring
- Spring breakage protection: Yes
- Max. cable pull-out length: 3000 mm
- Adjustable cord length: Yes
- Wire cable diameter: 3 mm
- Replaceable cord: Yes
- Cord in-feed restriction: Absorbs impacts, adjustable
- Cable drum material: Abrasion-proof plastic
- Cord material: Steel
- With automatic locking: No
- Suspension type: Freely rotating and pivot screw karabiner hook
- Load attachment: Screw Karabiner hook
- Material of the housing: Plastic
- Housing height: 259.4 mm
- Housing width: 211.5 mm
- Housing thickness: 70 mm
- Version: Standard
- Height: 550 mm



Min./max. load-carrying capacity					2-5 kg	4-8 kg
Model					7221/1	7221/2
			Colour of housing			
Spring balancers with load capacity of 2.0-14.0 kg	77001...		Orange	Ident. No.	401 ●	402 ●
Spare cables	77003...			Ident. No.	020 ●	020 ●
Cable extension	77003...	Length: 1000 mm		Ident. No.	100 ●	100 ●
	77003...	Length: 2000 mm		Ident. No.	110 ●	110 ●
Min./max. load-carrying capacity					7-10 kg	10-14 kg
Model					7221/3	7221/4
			Colour of housing			
Spring balancers with load capacity of 2.0-14.0 kg	77001...		Orange	Ident. No.	403 ●	404 ●
Spare cables	77003...			Ident. No.	020 ●	020 ●
Cable extension	77003...	Length: 1000 mm		Ident. No.	100 ●	100 ●
	77003...	Length: 2000 mm		Ident. No.	110 ●	110 ●

Prod. Gr. 772

AUTOSTAT Rustproof design (DIN 15112)

Min./max. load-carrying capacity		2-5 kg	4-8 kg	7-10 kg	10-14 kg
Model		7221/1	7221/2	7221/3	7221/4
77001...	Ident. No.	568 ●	569 ○	570 ○	571 ○

Prod. Gr. 7EB

AUTOSTAT Spring balancers with load capacity of 2.0-14.0 kg, with automatic lock

(DIN 15112)

Type 7222, cable extension 3000 mm

Application:

Can be used for following tools and devices, e.
g.: Electrical and compressed air hand machines,
engravers, exhaust hoses, compressed air devices,
paint spray guns, film welding devices

Execution:

- Larger load-bearing ranges
- Housing made of extremely shock-resistant special plastic
- Suspension via a freely turning and swivelling safety snap hook
- Infinitely variable load setting via an adjusting screw with over-twist safeguard
- The load is attached via a safe screw snap hook
- Cable feed limitation is impact absorbing and adjustable
- Rope is infinitely variable in its length via a rope clamp
- If required, the cable can be replaced very easily
- Safety device: Fall arrester in line with DIN 15112 included in scope of delivery, spring safety device, high-strength and hooped special cable drum, can be blocked, push clamp for securing the cable end
- Working area: Cable extraction: 3000 mm, cables in special lengths available on request. The automatic cable retraction stop allows the device to be locked. Locking not to be used for load change!

Advantage:

- Effortless work

Technical data:

- With overrotation protection: Yes
- Number of springs: 1 PCS
- Spring design: Special mainspring
- Spring breakage protection: Yes
- Max. cable pull-out length: 3000 mm
- Adjustable cord length: Yes
- Wire cable diameter: 3 mm
- Replaceable cord: Yes
- Cord in-feed restriction: Absorbs impacts, adjustable
- Cable drum material: Abrasion-proof plastic
- Cord material: Steel
- With automatic locking: Yes
- Suspension type: Freely rotating and pivot screw karabiner hook
- Load attachment: Screw Karabiner hook
- Material of the housing: Plastic
- Housing height: 259.4 mm
- Housing width: 211.5 mm
- Housing thickness: 70 mm
- Version: Standard
- Height: 550 mm



Min./max. load-carrying capacity					2-5 kg	4-8 kg
Model					7222/1	7222/2
			Colour of housing			
Spring balancers with load capacity of 2.0-14.0 kg, with automatic lock	77001...		Orange	Ident. No.	411	412
Spare cables	77003...			Ident. No.	020	020
Cable extension	77003...	Length: 1000 mm		Ident. No.	100	100
	77003...	Length: 2000 mm		Ident. No.	110	110
Min./max. load-carrying capacity					7-10 kg	10-14 kg
Model					7222/3	7222/4
			Colour of housing			
Spring balancers with load capacity of 2.0-14.0 kg, with automatic lock	77001...		Orange	Ident. No.	413	414
Spare cables	77003...			Ident. No.	020	020
Cable extension	77003...	Length: 1000 mm		Ident. No.	100	100
	77003...	Length: 2000 mm		Ident. No.	110	110

Prod. Gr. 772

AUTOSTAT Rustproof design (DIN 15112)

Min./max. load-carrying capacity		2-5 kg	4-8 kg	7-10 kg	10-14 kg
Model		7222/1	7222/2	7222/3	7222/4
77001...	Ident. No.	572	573	574	575
		○	○	○	○

Prod. Gr. 7EB

AUTOSTAT Spring balance with compressed air spiral hose, load capacity 0.5-3.0 kg

(DIN 15112)

Type 7211, cable extension 2500 mm

Application:

Particularly suited for compressed air tools with high air consumption.

Execution:

- Larger load-bearing ranges
- Housing made of extremely shock-resistant special plastic
- Cable drum is made of non abrasive plastic
- Riveted load-bearing spring made from high-strength special steel
- Suspension with screw snap hook
- Cable feed limitation is impact absorbing and adjustable
- The load is attached via a safe screw snap hook
- Spiral hose: made of PU, 9 x 13 mm, colour yellow or 11 x 16 mm, colour blue, including straight inlets and outlets of 500 mm, operating pressure up to max. 10 bar, without compressed air connections
- Safety device: Fall arrester in line with DIN 15112 included in scope of delivery, insulated suspension, shape-stabilised structure
- Working area: Cable extraction: 2500 mm

Delivery:

Without compressed air connections and couplings, deliverable upon request: with automatic stop (type 7212)

Technical data:

- Spring design: Special mainspring
- Max. cable pull-out length: 2500 mm
- Adjustable cord length: No
- Wire cable diameter: 2 mm
- Replaceable cord: No
- Cord in-feed restriction: Absorbs impacts, adjustable
- Cable drum material: Plastic
- With automatic locking: No
- Connection thread: Without
- Max. hose extension length: 2500 mm
- Max. working pressure: 10 bar
- Suspension type: Freely rotating and pivot screw karabiner hook
- Load attachment: Screw Karabiner hook
- Housing height: 166.5 mm
- Housing width: 133 mm
- Housing thickness: 45 mm
- Height: 420 mm



Min./max. load-carrying capacity	0.5-2 kg	1.5-3 kg	0.5-2 kg	1.5-3 kg
Model	7211/101	7211/102	7211/111	7211/112
Inner hose Ø (mm)	9	9	11	11
Outer Ø of hose (mm)	13	13	16	16
Material of the housing	Plastic	Plastic	Plastic	-
77001...	Ident. No. 501	502	511	512
	○	○	○	○

Prod. Gr. 772

AUTOSTAT Spring balance with compressed air spiral hose, load-bearing capacity 2.0-14.0 kg (DIN 15112)

Type 7221, cable extension 3000 mm

Application:

Particularly suited for compressed air tools with high air consumption. For large working areas (cable extension 3000 mm) and heavy compressed air tools (carrying capacity up to 14 kg).

Execution:

- Larger load-bearing ranges
- Housing made of extremely shock-resistant special plastic
- Suspension with screw snap hook
- The load is attached via a safe screw snap hook
- Cable feed limitation is impact absorbing and adjustable
- Rope is infinitely variable in its length via a rope clamp
- If required, the cable can be replaced very easily
- Spiral hose: made of PU, 9 x 13 mm, colour yellow or 11 x 16 mm, colour blue, including straight inlets and outlets of 500 mm, operating pressure up to max. 10 bar, without compressed air connections
- Safety device: Fall arrester in line with DIN 15112 included in scope of delivery, spring safety device, hooped special motive spring, cable drum, can be blocked, push clamp for securing the cable end
- Working area: Cable extraction: 3000 mm

Delivery:

Without compressed air connections and couplings, deliverable upon request: with automatic stop (type 7212)

Technical data:

- Spring design: Special mainspring
- Max. cable pull-out length: 3000 mm
- Adjustable cord length: Yes
- Wire cable diameter: 3 mm
- Replaceable cord: Yes
- Cord in-feed restriction: Absorbs impacts, adjustable
- Cable drum material: Plastic
- With automatic locking: No
- Connection thread: Without
- Max. hose extension length: 3000 mm
- Max. working pressure: 10 bar
- Suspension type: Freely rotating and pivot screw karabiner hook
- Load attachment: Screw Karabiner hook
- Material of the housing: Plastic
- Housing height: 259.4 mm
- Housing width: 211.5 mm
- Housing thickness: 70 mm
- Height: 550 mm



Min./max. load-carrying capacity	2-5 kg	4-8 kg	7-10 kg	10-14 kg	2-5 kg	4-8 kg	7-10 kg	10-14 kg
Model	7221/101	7221/102	7221/103	7221/104	7221/111	7221/112	7221/113	7221/114
Inner hose Ø (mm)	9	9	9	9	11	11	11	11
Outer Ø of hose (mm)	13	13	13	13	16	16	16	16
77001...	Ident. No. 601	602	603	604	611	612	613	614
	○	●	●	○	○	○	○	○

Prod. Gr. 772

AUTOSTAT Balancer with extending pneumatic hose, load capacity 0.4-3.0 kg (DIN 15112)

Type 7223, 800 mm hose extension

Execution:

- Air supply via the AIR spring balance by installed compressed air hose directly to the compressed air machine
- Rate of air flow is identical in inserted and extracted hose
- Rotating joint for air connection is integrated in the device
- hose reel is particularly soft and free-moving
- Housing and hose drum made of extremely shock-resistant and abrasion-proof special plastic
- Safety device: freely rotating and swivelling suspension with a screw snap hook, fall protection in line with DIN 15112 included in scope of delivery, carrying capacity adjusted via notches, tools attached using quick-action coupling provided, adjustable elastic cable retraction limiter, riveted special motive spring
- Working area: Hose extension: 800 mm

Delivery:

Available upon request: Hose extensions

Technical data:

- Spring design: Special mainspring
- Cord in-feed restriction: Absorbs impacts, adjustable
- Cable drum material: Plastic
- With automatic locking: No
- Max. hose extension length: 800 mm
- Inner hose diameter: 6 mm
- Outer diameter of hose: 8 mm
- Max. working pressure: 10 bar
- Suspension type: Freely rotating and pivot screw karabiner hook
- Load attachment: Screw Karabiner hook
- Material of the housing: Plastic
- Housing width: 141 mm
- Housing thickness: 71 mm
- Height: 385 mm



Min./max. load-carrying capacity		0.4-1.2 kg	1.2-2.2 kg	2.2-3 kg
Model		7223/1	7223/2	7223/3
77000...		Ident. No. 651	652	653
		●	●	●

Prod. Gr. 772

AUTOSTAT Balancer with load capacity of 0.4-6.5 kg (DIN 15112)

Type 7228, cable extraction 1600 mm

Application:

Can be used with the following tools and devices, e.g. compressed air devices, electric devices, paint spray guns, cable-binding pliers, nailing devices, flue gas swivelling arms, robot power supply line, welding pliers, packaging devices etc.

Execution:

- Housing made of extremely shock-resistant special plastic
- Suspended with rotating screw snap hooks
- Infinitely adjustable load, via notches
- The load is attached via a safe screw snap hook
- Cable feed limitation is impact absorbing and adjustable
- Rope is infinitely variable in its length via a rope clamp
- If required, the cable can be replaced very easily
- Safety device: Fall arrester in line with DIN 15112 included in scope of delivery, spring safety device, riveted special motive spring, cable drum, can be blocked, push clamp for securing the cable end
- Working area: Cable extraction: 1600 mm, ropes in special lengths available on request

Advantage:

- Effortless work

Technical data:

- With overrotation protection: No
- Number of springs: 1 PCS
- Spring design: Riveted special mainspring
- Max. cable pull-out length: 1600 mm
- Adjustable cord length: Yes
- Wire cable diameter: 3 mm
- Replaceable cord: Yes
- Cord in-feed restriction: Absorbs impacts, adjustable
- Cable drum material: Highly abrasion-proof plastic
- With automatic locking: No
- Suspension type: Freely rotating and pivot screw karabiner hook
- Load attachment: Screw Karabiner hook
- Material of the housing: Plastic
- Housing width: 141 mm
- Housing thickness: 71 mm
- Colour of housing: Orange
- Height: 460 mm



Min./max. load-carrying capacity				0.4-1.2 kg	1.2-2.6 kg	2.6-3.8 kg	3.8-5.2 kg	5.2-6.5 kg
Model				7228/1	7228/2	7228/3	7228/4	7228/5
Spring breakage protection				No	No	Yes	Yes	Yes
Balancer with load capacity of 0.4-6.5 kg	77000...	Ident. No.		586	587	588	589	001
			●	●	●	●	●	●
Spare spring	77002...	Ident. No.		586	587	588	589	001
				○	○	○	○	○
Spare cables	77003...	Ident. No.		030	030	030	030	030
				●	●	●	●	●
Cable extension	77003...	Ident. No.	Length: 1000 mm	100	100	100	100	100
	77003...		Length: 2000 mm	110	110	110	110	110
				●	●	●	●	●

Prod. Gr. 772

AUTOSTAT Balancer with load capacity of 3.0-21.0 kg (DIN 15112)

Type 7230, cable extension 2000 mm

Application:

Can be used for following tools and devices, e. g.: compressed air devices, electrical devices, paint spray guns, cable-binding pliers, nailing devices, flue gas swivelling arms, robot power supply line, welding pliers, packaging devices, etc.

Execution:

- Housing made of extremely shock-resistant special plastic
- Suspension via a freely turning and swivelling safety hook
- Infinitely adjustable load, via adjusting screw
- The load is attached via a safe screw snap hook
- Cable feed limitation is impact absorbing and adjustable
- Rope is infinitely variable in its length via a rope clamp
- If required, the cable can be replaced very easily
- Safety device: Fall arrester in line with DIN 15112 included in scope of delivery, spring safety device, riveted special motive spring, cable drum, can be blocked (with integrated locking device), push clamp for securing the cable end
- Working area: Cable extraction: 2000 mm, ropes in special lengths available on request

Advantage:

- Effortless work

Technical data:

- With overrotation protection: No
- Number of springs: 1 PCS
- Spring design: Riveted special mainspring
- Spring breakage protection: Yes
- Max. cable pull-out length: 2000 mm
- Adjustable cord length: Yes
- Wire cable diameter: 3 mm
- Replaceable cord: Yes
- Cord in-feed restriction: Absorbs impacts, adjustable
- Cable drum material: Highly abrasion-proof plastic
- Cord material: Steel
- With automatic locking: No
- Suspension type: Freely rotating and pivot safety hook
- Load attachment: Screw Karabiner hook
- Material of the housing: Plastic
- Housing width: 180 mm
- Housing thickness: 130 mm
- Colour of housing: Orange
- Version: Standard
- Height: 520 mm



Min./max. load-carrying capacity				3-5 kg	4.5-7 kg	6-10 kg	9-14 kg	13-17 kg	16-21 kg
Model				7230/1	7230/2	7230/3	7230/4	7230/5	7230/6
Balancer with load capacity of 3.0-21.0 kg	77000...		Ident. No.	590	600	610	620	630	640
				●	●	●	●	●	●
Spare spring	77002...		Ident. No.	590	600	610	620	630	640
				●	●	●	●	○	○
Spare cables	77003...		Ident. No.	020	020	020	020	020	020
				●	●	●	●	●	●
Cable extension	77003...	Length: 1000 mm	Ident. No.	100	100	100	100	100	100
	77003...	Length: 2000 mm	Ident. No.	110	110	110	110	110	110
				●	●	●	●	●	●

Prod. Gr. 772

AUTOSTAT Rustproof design (DIN 15112)

Min./max. load-carrying capacity		3-5 kg	4.5-7 kg	6-10 kg	9-14 kg	13-17 kg	16-21 kg
Model		7230/1	7230/2	7230/3	7230/4	7230/5	7230/6
77001...	Ident. No.	546	547	548	549	550	551
		●	●	●	●	●	●

Prod. Gr. 7EB

AUTOSTAT Balancer with load capacity of 3.0-21.0 kg, with automatic lock (DIN 15112)

Type 7231, cable extension 2000 mm

Application:

Can be used for following tools and devices, e. g.: compressed air devices, electrical devices, paint spray guns, cable-binding pliers, nailing devices, flue gas swivelling arms, robot power supply line, welding pliers, packaging devices, etc.

Execution:

- Housing made of extremely shock-resistant special plastic
- suspension via a freely turning and swivelling safety hook
- Infinitely adjustable load, via adjusting screw
- The load is attached via a safe screw snap hook
- Cable feed limitation is impact absorbing and adjustable
- Rope is infinitely variable in its length via a rope clamp
- If required, the cable can be replaced very easily
- Safety device: Protection against falling in line with DIN 15112 included in scope of delivery, spring safety device, riveted special motive spring, cable drum, can be blocked (with integrated locking device), push clamp for securing the cable end
- Working area: Cable extraction: 2000 mm, ropes in special lengths available on request
- Automatic stop allows the device to be locked. Locking not to be used for load change!

Advantage:

- Effortless work

Technical data:

- With overrotation protection: No
- Number of springs: 1 PCS
- Spring design: Riveted special mainspring
- Spring breakage protection: Yes
- Max. cable pull-out length: 2000 mm
- Adjustable cord length: Yes
- Wire cable diameter: 3 mm
- Replaceable cord: Yes
- Cord in-feed restriction: Absorbs impacts, adjustable
- Cable drum material: Highly abrasion-proof plastic
- Cord material: Steel
- With automatic locking: Yes
- Suspension type: Freely rotating and pivot safety hook
- Load attachment: Screw Karabiner hook
- Material of the housing: Plastic
- Housing width: 180 mm
- Housing thickness: 130 mm
- Colour of housing: Orange
- Version: Standard
- Height: 520 mm



Min./max. load-carrying capacity				3-5 kg	4.5-7 kg	6-10 kg	9-14 kg	13-17 kg	16-21 kg
Model				7231/1	7231/2	7231/3	7231/4	7231/5	7231/6
Balancer with load capacity of 3.0-21.0 kg, with automatic lock	77000...		Ident. No.	594	604	614	624	634	644
				●	●	●	●	●	●
Spare spring	77002...		Ident. No.	590	600	610	620	630	640
Spare cables	77003...		Ident. No.	020	020	020	020	020	020
Cable extension	77003...	Length: 1000 mm	Ident. No.	100	100	100	100	100	100
	77003...	Length: 2000 mm	Ident. No.	110	110	110	110	110	110

Prod. Gr. 772

AUTOSTAT Rustproof design (DIN 15112)

Min./max. load-carrying capacity		3-5 kg	4.5-7 kg	6-10 kg	9-14 kg	13-17 kg	16-21 kg
Model		7231/1	7231/2	7231/3	7231/4	7231/5	7231/6
77001...	Ident. No.	526	527	528	529	530	531
		○	○	○	○	○	○

Prod. Gr. 7EB

AUTOSTAT Balancer with load capacity of 15.0-55.0 kg (DIN 15112)

Type 7235, cable extension 2000 mm

Application:

Areas of application e. g.: Meat packing machines, welding tongs, sawing machines, etc.

Execution:

- Housing and the cable drum made of aluminium sand cast
- Cable drum ball-bearing
- Suspension via a freely turning and swivelling safety snap hook
- Carrying force is infinitely variable via adjusting screw
- Load is attached via a screw snap hook
- Cable feed limitation is impact absorbing and adjustable
- If required, the cable can be replaced very easily
- Safety device: Fall arrester in line with DIN 15112 included in scope of delivery, spring safety device, riveted special motive spring, cable drum, can be blocked with integrated locking device
- Working area: Cable extraction: 2000 mm, ropes in special lengths available on request

Advantage:

- Effortless work

Technical data:

- With overrotation protection: No
- Number of springs: 1 PCS
- Spring design: Riveted special mainspring
- Spring breakage protection: Yes
- Max. cable pull-out length: 2000 mm
- Adjustable cord length: No
- Wire cable diameter: 3 mm
- Replaceable cord: Yes
- Cord in-feed restriction: Absorbs impacts, adjustable
- Cable drum material: Gravity die-cast aluminium
- Cord material: Steel
- With automatic locking: No
- Suspension type: Freely rotating and pivot screw karabiner hook
- Load attachment: Screw Karabiner hook
- Material of the housing: Gravity die-cast aluminium
- Surface: Powder-coated
- Housing width: 223 mm
- Housing thickness: 150.5 mm
- Version: Standard
- Height: 530 mm



Min./max. load-carrying capacity				15-25 kg	25-35 kg	35-45 kg	45-55 kg
Model				7235/1	7235/2	7235/3	7235/4
Balancer with load capacity of 15.0-55.0 kg	77000...		Ident. No.	671	672	673	674
				●	●	●	●
Spare cables	77003...		Ident. No.	035	035	035	035
Cable extension	77003...	Length: 1000 mm	Ident. No.	120	120	120	120
	77003...	Length: 2000 mm	Ident. No.	130	130	130	130

Prod. Gr. 772

AUTOSTAT Rustproof design (DIN 15112)

Min./max. load-carrying capacity		15-25 kg	25-35 kg	35-45 kg	45-55 kg
Model		7235/1	7235/2	7235/3	7235/4
77001...	Ident. No.	675	676	677	678
		●	●	●	●

Prod. Gr. 7EB

AUTOSTAT Balancer with load capacity of 15.0-55.0 kg, with automatic lock (DIN 15112)

Type 7236, cable extension 2000 mm

Application:

Areas of application e. g.: Meat packing machines, welding tongs, sawing machines, etc.

Execution:

- Housing and the cable drum made of aluminium sand cast
- Cable drum ball-bearing
- Suspension via a freely turning and swivelling safety snap hook
- Carrying force is infinitely variable via adjusting screw
- Load is attached via a screw snap hook
- Cable feed limitation is impact absorbing and adjustable
- If required, the cable can be replaced very easily
- Safety device: Fall arrester in line with DIN 15112 included in scope of delivery, spring safety device, riveted special motive spring, cable drum, can be blocked with integrated locking device
- Working area: Cable extraction: 2000 mm, ropes in special lengths available on request
- Automatic stop allows the device to be locked. Locking not to be used for load change!

Advantage:

- Effortless work

Technical data:

- With overrotation protection: No
- Number of springs: 1 PCS
- Spring design: Riveted special mainspring
- Spring breakage protection: Yes
- Max. cable pull-out length: 2000 mm
- Adjustable cord length: No
- Wire cable diameter: 3 mm
- Replaceable cord: Yes
- Cord in-feed restriction: Absorbs impacts, adjustable
- Cable drum material: Gravity die-cast aluminium
- Cord material: Steel
- With automatic locking: Yes
- Suspension type: Freely rotating and pivot screw karabiner hook
- Load attachment: Screw Karabiner hook
- Material of the housing: Gravity die-cast aluminium
- Surface: Powder-coated
- Housing width: 223 mm
- Housing thickness: 150.5 mm
- Version: Standard
- Height: 530 mm



Min./max. load-carrying capacity				15-25 kg	25-35 kg	35-45 kg	45-55 kg
Model				7236/1	7236/2	7236/3	7236/4
Balancer with load capacity of 15.0-55.0 kg, with automatic lock	77000...		Ident. No.	681 ○	682 ●	683 ●	684 ○
Spare cables	77003...		Ident. No.	035 ●	035 ●	035 ●	035 ●
Cable extension	77003...	Length: 1000 mm	Ident. No.	120 ●	120 ●	120 ●	120 ●
	77003...	Length: 2000 mm	Ident. No.	130 ○	130 ○	130 ○	130 ○

Prod. Gr. 772

AUTOSTAT Rustproof design (DIN 15112)

Min./max. load-carrying capacity		15-25 kg	25-35 kg	35-45 kg	45-55 kg
Model		7236/1	7236/2	7236/3	7236/4
77001...	Ident. No.	685 ○	686 ○	687 ○	688 ○

Prod. Gr. 7EB

MORE THAN 60,000 PRODUCTS FOR MAXIMUM INNOVATION.

WE HAVE WHAT IT TAKES.

For a complete range of products that meet the toughest demands, visit www.iconridge.com

AUTOSTAT Balancer with load capacity of 12.0-100.0 kg (DIN 15112)

Type 7241, cable extension 2000 mm

Application:

Can be used for following tools and devices, e. g.: Multi-purpose screwdriver, butcher's machines, welding tongs, X-ray equipment, monitor suspensions, measuring robots, riveting machines.

Execution:

- Housing and the cable drum made of high-pressure die cast aluminium
- Cable drum double ball bearings
- Suspension can be positioned to the load which is done by a safety hook in free rotating and swiveling design with hook mouth securing
- Carrying force is infinitely variable via adjusting screw
- Load is attached via a screw snap hook
- Cable feed limitation is impact absorbing and adjustable
- Rope is infinitely variable in its length via a rope clamp
- If required, the cable can be replaced very easily
- Safety device: Fall arrester in line with DIN 15112 included in scope of delivery, patented over-twist safeguard of suspension spring, spring safety device, fully encapsulated special motive spring, cable drum, can be blocked with integrated locking device, push clamp for securing the cable end
- Working area: Cable extraction: 2000 mm, cables in special lengths available on request. Special design with manual cable retraction lock deliverable upon request. This allows the cable to be blocked with a single movement when working. Locking not to be used for load change!

Advantage:

- Effortless work

Technical data:

- With overrotation protection: Yes
- Number of springs: 1 PCS
- Spring design: Riveted special mainspring in separate spring housing
- Spring breakage protection: Yes
- Max. cable pull-out length: 2000 mm
- Adjustable cord length: Yes
- Wire cable diameter: 5 mm
- Replaceable cord: Yes
- Cord in-feed restriction: Absorbs impacts, adjustable
- Cable drum material: Die-cast aluminium
- Cord material: Steel
- With automatic locking: No
- Suspension type: Freely rotating and pivot safety hook, positionable
- Load attachment: Screw Karabiner hook
- Material of the housing: Die-cast aluminium
- Surface: Powder-coated
- Housing width: 249 mm
- Housing thickness: 202 mm
- Version: Standard
- Height: 750 mm



Min./max. load-carrying capacity				12-20 kg	20-30 kg	30-45 kg	45-60 kg	60-75 kg	75-90 kg	90-100 kg
Model				7241/1	7241/2	7241/3	7241/4	7241/5	7241/6	7241/7
Balancer with load capacity of 12.0-100.0 kg	77000...		Ident. No.	701	702	703	704	705	706	707
				●	●	●	●	●	●	●
Spare spring	77002...		Ident. No.	711 ○	721 ○	731 ○	741 ○	751 ○	761 ○	771 ○
Spare cables	77003...		Ident. No.	040 ●	040 ●	040 ●	040 ●	040 ●	040 ●	040 ●
Cable extension	77003...	Length: 1000 mm	Ident. No.	120 ●	120 ●	120 ●	120 ●	120 ●	120 ●	120 ●
	77003...	Length: 2000 mm	Ident. No.	130 ○	130 ○	130 ○	130 ○	130 ○	130 ○	130 ○

Prod. Gr. 772

AUTOSTAT Rustproof design (DIN 15112)

Min./max. load-carrying capacity		12-20 kg	20-30 kg	30-45 kg	45-60 kg	60-75 kg	75-90 kg	90-100 kg
Model		7241/1	7241/2	7241/3	7241/4	7241/5	7241/6	7241/7
77001...	Ident. No.	711 ○	712 ●	713 ●	714 ●	715 ○	716 ○	717 ○

Prod. Gr. 7EB

AUTOSTAT Balancer with load capacity of 12.0-100.0 kg, with 2 load cables (DIN 15112)

Type 7248, cable extension 2000 mm

Application:

Can be used for following tools and devices, e. g.: Installing in devices, X-ray equipment, welding templates, in the automobile industry, multi-purpose screwdrivers, measuring arms etc.

Execution:

- Highest safety due to double bearing rope
- Product protection for very expensive tools, gauges and workpieces
- Personal protection in case of installations above the head
- Double load-bearing cable infinitely length-adjustable via cable clamps, cable very easy to replace when necessary
- Housing and cable drum made of high-pressure die cast aluminium, cable drum with double ball bearings
- Suspension can be positioned to the load which is done by a safety hook in free rotating and swivelling design with hook mouth securing, loads attached using screw snap hooks
- Carrying force is infinitely variable via adjusting screw
- Cable feed limitation is impact absorbing and adjustable
- Safety device: Fall arrester in line with DIN 15112 included in scope of delivery, patented over-twist safeguard of suspension spring, spring safety device, fully encapsulated special motive spring,

cable drum, can be blocked with integrated locking device, push clamp for securing the cable end

- Working area: Cable extraction: 2000 mm, cables in special lengths available on request. Special design with manual cable retraction lock deliverable upon request. This allows the cable to be blocked with a single movement when working. Locking not to be used for load change!

Advantage:

- Effortless work

Technical data:

- With overrotation protection: Yes
- Number of springs: 1 PCS
- Spring design: Riveted special mainspring in separate spring housing
- Spring breakage protection: Yes
- Max. cable pull-out length: 2000 mm
- Adjustable cord length: Yes
- Wire cable diameter: 5 mm
- Replaceable cord: Yes
- Cord in-feed restriction: Absorbs impacts, adjustable
- Cable drum material: Die-cast aluminium
- With automatic locking: No
- Suspension type: Freely rotating and pivot safety hook, positionable
- Load attachment: Screw Karabiner hook
- Material of the housing: Die-cast aluminium
- Housing width: 249 mm
- Housing thickness: 231 mm
- Height: 1080 mm



Min./max. load-carrying capacity	12-20 kg	20-30 kg	30-45 kg	45-60 kg	60-75 kg	75-90 kg	90-100 kg
Model	7248/1	7248/2	7248/3	7248/4	7248/5	7248/6	7248/7
77000...	796	797	798	799	800	801	802
Ident. No.	o	o	o	o	o	o	o

Prod. Gr. 772

AUTOSTAT Balancer with load capacity of 15.0-100.0 kg (DIN 15112)

Type 7251, cable extension 3000 mm

Application:

Can be used for following tools and devices, e. g.: multi-purpose screwdrivers, butcher's machines, welding tongs, measuring robots, packaging machines, riveting tongs, assembly devices etc.

Execution:

- Housing and the cable drum made of aluminium sand cast
- Cable drum double ball bearings
- Suspension can be positioned to the load which is done by a safety hook in free rotating and swivelling design with hook mouth securing
- Carrying force is infinitely variable via adjusting screw
- Load is attached via a screw snap hook
- Cable feed limitation is impact absorbing and adjustable
- Rope is infinitely variable in its length via a rope clamp
- If required, the cable can be replaced very easily
- Safety device: Fall arrester in line with DIN 15112 included in scope of delivery, patented over-twist safeguard of suspension spring, spring safety device, fully encapsulated special motive spring, cable drum, can be blocked with integrated locking device, push clamp for securing the cable end
- Working area: Cable extraction: 3000 mm, ropes in special lengths available on request

Advantage:

- Effortless work

Technical data:

- With overrotation protection: Yes
- Number of springs: 1 PCS
- Spring design: Riveted special mainspring in separate spring housing
- Spring breakage protection: Yes
- Max. cable pull-out length: 3000 mm
- Adjustable cord length: Yes
- Wire cable diameter: 5 mm
- Replaceable cord: Yes
- Cord in-feed restriction: Absorbs impacts, adjustable
- Cable drum material: Gravity die-cast aluminium
- Cord material: Steel
- With automatic locking: No
- Suspension type: Freely rotating and pivot safety hook, positionable
- Load attachment: Screw Karabiner hook
- Material of the housing: Gravity die-cast aluminium
- Surface: Powder-coated
- Housing width: 290 mm
- Housing thickness: 258 mm
- Version: Standard
- Height: 800 mm



Min./max. load-carrying capacity	15-25 kg	25-35 kg	35-50 kg	50-65 kg	65-80 kg	80-90 kg	90-100 kg
Model	7251/1	7251/2	7251/3	7251/4	7251/5	7251/6	7251/7
Balancer with load capacity of 15.0-100.0 kg	77000...	77000...	77000...	77000...	77000...	77000...	77000...
Ident. No.	861	862	863	864	865	866	867
	(o)*	(o)*	(o)*	(o)*	(o)*	(o)*	(o)*
Spare spring	77002...	77002...	77002...	77002...	77002...	77002...	77002...
Ident. No.	806	811	816	821	826	831	836
	o	o	o	o	o	o	o
Spare cables	77003...	77003...	77003...	77003...	77003...	77003...	77003...
Ident. No.	060	060	060	060	060	060	060
	•	•	•	•	•	•	•
Cable extension	77003...	77003...	77003...	77003...	77003...	77003...	77003...
Length: 1000 mm	120	120	120	120	120	120	120
	•	•	•	•	•	•	•
Length: 2000 mm	130	130	130	130	130	130	130
	o	o	o	o	o	o	o

Prod. Gr. 772

AUTOSTAT Rustproof design (DIN 15112)

Min./max. load-carrying capacity	15-25 kg	25-35 kg	35-50 kg	50-65 kg	65-80 kg	80-90 kg	90-100 kg
Model	7251/1	7251/2	7251/3	7251/4	7251/5	7251/6	7251/7
77001...	881	882	883	884	885	886	887
Ident. No.	○	○	○	○	●	●	○

Prod. Gr. 7EB

AUTOSTAT Balancer with load capacity of 100.0-200.0 kg (DIN 15112)

Type 7251, cable extension 3000 mm

Application:

Can be used for following tools and devices, e. g.: multi-purpose screwdrivers, butcher's machines, welding tongs, measuring robots, packaging machines, riveting tongs, assembly devices etc.

Execution:

- Housing and the cable drum made of aluminium sand cast
- Cable drum double ball bearings
- Suspension can be positioned to the load which is done by a safety hook in free rotating and swivelling design with hook mouth securing
- Carrying force is infinitely variable via adjusting screw
- Load is attached via a screw snap hook
- Cable feed limitation is impact absorbing and adjustable
- Rope is infinitely variable in its length via a rope clamp
- If required, the cable can be replaced very easily
- Safety device: Fall arrester in line with DIN 15112 included in scope of delivery, patented over-twist safeguard of suspension spring, spring safety device, fully encapsulated special motive spring, cable drum, can be blocked with integrated locking device, push clamp for securing the cable end
- Working area: Cable extraction: 3000 mm, ropes in special lengths available on request

Advantage:

- Effortless work

Technical data:

- With overrotation protection: Yes
- Number of springs: 2 PCS
- Spring design: Riveted special mainspring in separate spring housing
- Spring breakage protection: Yes
- Max. cable pull-out length: 3000 mm
- Adjustable cord length: Yes
- Wire cable diameter: 5 mm
- Replaceable cord: Yes
- Cord in-feed restriction: Absorbs impacts, adjustable
- Cable drum material: Gravity die-cast aluminium
- Cord material: Steel
- With automatic locking: No
- Suspension type: Freely rotating and pivot safety hook, positionable
- Load attachment: Screw Karabiner hook
- Material of the housing: Gravity die-cast aluminium
- Surface: Powder-coated
- Housing width: 290 mm
- Housing thickness: 348 mm
- Version: Standard
- Height: 800 mm



Min./max. load-carrying capacity				100-115 kg	115-130 kg	130-140 kg	140-150 kg	150-170 kg	170-180 kg	180-190 kg	190-200 kg
Model				7251/8	7251/9	7251/10	7251/11	7251/12	7251/13	7251/14	7251/15
Balancer with load capacity of 100.0-200.0 kg	77000...		Ident. No.	868	869	870	871	872	873	874	875
				●	●	(○)*	(○)*	(○)*	(○)*	(○)*	●*
Spare spring	77002...		Ident. No.	816	821	826	826	831	831	836	836
				○	○	○	○	○	○	○	○
Spare cables	77003...		Ident. No.	060	060	060	060	060	060	060	060
				●	●	●	●	●	●	●	●
Cable extension	77003...	Length: 1000 mm	Ident. No.	120	120	120	120	120	120	120	120
				●	●	●	●	●	●	●	●
	77003...	Length: 2000 mm	Ident. No.	130	130	130	130	130	130	130	130
				○	○	○	○	○	○	○	○

Prod. Gr. 772

AUTOSTAT Rustproof design (DIN 15112)

Min./max. load-carrying capacity	100-115 kg	115-130 kg	130-140 kg	140-150 kg	150-170 kg	170-180 kg	180-190 kg	190-200 kg
Model	7251/8	7251/9	7251/10	7251/11	7251/12	7251/13	7251/14	7251/15
77001...	888	889	890	891	892	893	894	895
Ident. No.	○	○	○	○	○	○	○	○

Prod. Gr. 7EB

AUTOSTAT Balancer with load capacity of 150.0-300.0 kg (DIN 15112)

Type 7261, cable extension 1500 mm

Application:

Can be used for following tools and devices, e. g.:
Riveting tongs, butcher's machines etc.

Execution:

- Housing and the cable drum made of aluminium sand cast
- Cable drum double ball bearings
- Suspension can be tilted and positioned to the load
- Carrying force is infinitely variable via adjusting screw
- Load is attached via a safety hook with hook mouth protection on an encapsulated deflection roller
- Cable feed limitation is impact absorbing and adjustable
- Rope is infinitely variable in its length via a rope clamp
- If required, the cable can be replaced very easily
- Safety device: Fall arrester in line with DIN 15112 included in scope of delivery, patented over-twist safeguard of suspension spring, spring safety device, fully encapsulated special motive spring, cable drum, can be blocked with integrated locking device, push clamp for securing the cable end
- Working area: Cable extraction: 1500 mm, ropes in special lengths available on request

Advantage:

- Effortless work

Technical data:

- With overrotation protection: Yes
- Number of springs: 2 PCS
- Spring design: Riveted special mainspring in separate spring housing
- Spring breakage protection: Yes
- Max. cable pull-out length: 1500 mm
- Adjustable cord length: Yes
- Wire cable diameter: 5 mm
- Replaceable cord: Yes
- Cord in-feed restriction: Absorbs impacts, adjustable
- Cable drum material: Gravity die-cast aluminium
- With automatic locking: No
- Suspension type: Freely rotating and pivot safety hook, positionable
- Load attachment: Screw Karabiner hook
- Material of the housing: Gravity die-cast aluminium
- Housing width: 290 mm
- Housing thickness: 348 mm
- Height: 2500 mm



Min./max. load-carrying capacity				150-175 kg	175-200 kg	200-225 kg	225-250 kg	250-275 kg	275-300 kg
Model				7261/1	7261/2	7261/3	7261/4	7261/5	7261/6
Balancer with load capacity of 150.0-300.0 kg	77000...		Ident. No.	901 (○)*	902 (○)*	903 (○)*	904 (○)*	905 (○)*	906 (○)*
Spare spring	77002...		Ident. No.	816 ○	816 ○	821 ○	821 ○	826 ○	826 ○
Spare cables	77003...		Ident. No.	080 ○	080 ○	080 ○	080 ○	080 ○	080 ○
Cable extension	77003...	Length: 1000 mm	Ident. No.	120 ●	120 ●	120 ●	120 ●	120 ●	120 ●
	77003...	Length: 2000 mm	Ident. No.	130 ○	130 ○	130 ○	130 ○	130 ○	130 ○

Prod. Gr. 772

Yale Manual chain hoist (EN standard 818-7)

Made from sheet steel

Application:

For the ergonomic lifting of heavy materials and products.

Execution:

- Robust housing made entirely of steel
- Galvanised load chain in line with DIN EN 818-7 (quality class T)
- Galvanised manual chain
- 360° rotating hook
- High-quality enclosed bearings
- Reinforced handwheel lid
- Continuous stud bolts between the side panels and the lid fastening
- Precision-manufactured guide rollers
- Ball bearings and needle bearings in the gears, in the side panels and in the load chain wheel

Advantage:

- Increased stability
- Manual chain runs smoothly without catching or sticking
- Load chain wheel and driving pinion run faultlessly
- Long service life, extremely maintenance-friendly

Delivery:

Optionally deliverable with friction coupling and chain storer or with shorter or longer load and manual chain

Notes:

Optionally available with chain storer and overload protection. All technical specifications relate to a hook displacement of 3 m.

Technical data:

- Lift height: 3000 mm



Load-carrying capacity (kg)		500	1000	2000	3000
Nominal chain thickness (mm)		15	18	18	24
Chain Ø (mm)		5	6	6	8
Stroke force at nominal load (daN)		21	24	29	37
Lift height every 1 m hand chain is uncoiled (mm)		26	24	15	10
Min. hook spacing (mm)		350	380	490	580
Number of load chains (PCS)		1	1	2	2
77166...	Ident. No.	050	060	070	080

Prod. Gr. 775

Yale 360° hand chain hoist (EN standard 818-7)

With 360° rotating hand chain guide

Application:

For the ergonomic lifting of heavy materials and products. Suitable for the most extreme of applications and outdoor use.

Execution:

- Robust steel housing (powder-coated)
- Galvanised load chain in line with DIN EN 818-7 (quality class T)
- Galvanised manual chain
- 360° rotating carrying and load hook
- 360° rotating manual chain
- Hook guard

Advantage:

- Can be used from all directions, even from above
- Side work outside the danger zone
- Horizontal drawing and clamping
- high operational reliability, low maintenance requirements
- Optimum sealing for protection against external soiling and damage

Technical data:

- Lift height: 3000 mm
- Number of load chains: 1 PCS



Load-carrying capacity (kg)	500	1000	2000	3000
Nominal chain thickness (mm)	15	18	24	30
Chain Ø (mm)	5	6	8	10
Stroke force at nominal load (daN)	21	30	32	38
Lift height every 1 m hand chain is uncoiled (mm)	33	20	14	12
Min. hook spacing (mm)	300	335	395	520
77165... Ident. No.	410	420	430	440
	●	●	○	○

Prod. Gr. 775



Yale Lever chain hoist (EN standard 818-7)

Made from sheet steel

Application:

For tensioning, hoisting, pulling and tying down.

Execution:

- Compact and robust sheet steel housing
- Galvanised load chain in line with DIN EN 818-7 (quality class T)
- Smooth-running free-chaining feature for rapid load attachment
- 360° rotating carrying hook
- Chain end made of shatter-proof plastic
- Automatic threaded mechanical brake

Advantage:

- Low tare weight
- Requires low lifting power

Technical data:

- Lift height: 1500 mm

Load-carrying capacity (kg)	250	500	750	1500	3000	6000
Nominal chain thickness (mm)	12	12	18	24	30	30
Chain Ø (mm)	4	4	6	8	10	10
Stroke force at nominal load (daN)	25	25	20	35	40	40
Length of lever (mm)	160	160	250	330	380	380
Stroke height per lever revolution (mm)	80	40	20	22	17	9
Min. hook spacing (mm)	240	282	340	410	510	690
Number of load chains (PCS)	1	1	1	1	1	2
77157... Ident. No.	005	008	050	060	070	080
	●	●	●	●	●	●

Prod. Gr. 775



Lever chain hoist with ratchet tool (EN standard 818-7)

Made from sheet steel

Application:

For tensioning, hoisting, pulling and tying down.

Execution:

- Robust sheet steel housing (powder-coated)
- Galvanised load chain in line with DIN EN 818-7 (quality class T)
- Free-chaining feature for rapid passage of the unloaded chain
- Automatic operation, fully enclosed load pressure brake
- Reinforced hook protection

Advantage:

- Rapid passage of unloaded chain
- Suitable in industrial settings for lifting, pulling and tensioning
- Can also be used as a lashing device on lorries
- Vibration-resistant brakes
- Easy-release brakes, particularly when used as a lashing device

Technical data:

- Lift height: 1500 mm
- Number of load chains: 1 PCS



Load-carrying capacity (kg)	800	1600	3200
Nominal chain thickness (mm)	15.8	20.1	28.1
Chain Ø (mm)	5.6	7.1	10
Stroke force at nominal load (daN)	25	30	32
Length of lever (mm)	245	265	415
Stroke height per lever revolution (mm)	29	22	19
Min. hook spacing (mm)	280	335	395
77158...	080	160	320
Ident. No.	●	●	○

Prod. Gr. 775

DEMAG Electric chain hoist, basic, load capacity 125-2000 kg

A TENEX BRAND DC-Com type, 2-setting lifting speed

Application:

The performance spectrum of the chain block is tailored to with applications involving normal loads—just right for everyday use. It therefore meets the high quality standards of a DEMAG product.

Execution:

- Plug and lift—all chain block electric connections are plug-in
- With a hinged, universal suspension bracket, the tension can simply be suspended in the wheel set
- The length of the control cable can be adjusted without any additional wiring effort
- Fatigue-free operation due to ergonomically optimised and robust control switch DSC
- Fast change of the entire chain drive without dismantling the motor or transmission parts
- Protection control 24 V, type of protection IP 55

- Operating hour meter
- Operation limit switch for top-most/bottom-most hook position

Advantage:

- Service room
- Infrared diagnostic interface
- Speed-monitored brake/sliding clutch operating principle

Delivery:

Upon request: Manual and electric trolleys, see illustration. Larger hook paths and higher load stroke up to 5000 kg.

Technical data:

- Lift height: 4 m
- Stroke speed control: In two steps
- Colour: Azure blue RAL 5009



Load-carrying capacity (kg)	125	250	500	1000	2000
Stroke speed of precision hoist (m/min)	2	1.5	1.1	1	1
Stroke speed of main hoist (m/min)	8	6	4.5	4	4
Number of load chains (PCS)	1	1	1	1	2
Overall height (B) (mm)	364	364	416	505	597
Length (mm)	422	422	468	528	528
Depth (mm)	268	268	280	349	349
Model	DC-Com 1-125 V8/2	DC-Com 2-250 V6/1.5	DC-Com 5-500 V4.5/1,1	DC-Com 10-1000 V4/1	DC-Com 10-2000 V4/1
FEM group	3 m	2 m	2 m	2 m	2 m
77099...	012	014	016	018	020
Ident. No.	○	○	○	○	○

Prod. Gr. 774

Application:

Valuable and delicate parts can be lifted, lowered and positioned more gently and securely. Installation and insertion processes can be controlled more precisely. Lifting movements can be performed much more rapidly thanks to the double nominal speed of Pro-lift in the partial load range.

Execution:

- Plug and lift—all chain block electric connections are plug-in
- With a hinged, universal suspension bracket, the tension can simply be suspended in the wheel set
- Fatigue-free operation due to ergonomically optimised and robust control switch DSC
- Fast change of the entire chain drive without dismantling the motor or transmission parts
- Contactor protection 24 V, degree of protection IP55
- Operating hour meter

- Operation limit switch for top-most/bottom-most hook position
- High safety and long service life using speed-monitored brake/sliding clutch principle

Advantage:

- Service room
- Infrared diagnostic interface
- Speed-monitored brake/sliding clutch operating principle

Technical data:

- Lift height: 2.8 m
- Stroke speed control: Continuous
- Stroke speed without load: 30 m/min
- Min. stroke speed: 0.15 m/min
- Number of load chains: 1 PCS
- Overall height (B): 694 mm
- Length: 502 mm
- Depth: 268 mm
- Colour: Azure blue RAL 5009



Load-carrying capacity (kg)	80	125	250
Stroke speed at nominal load (m/min)	30	30	16
Model	DCMS-Pro 1-80VS30-30	DCMS-Pro 1-125VS30-30	DCMS-Pro 2-250VS16-30
FEM group	4 m	4 m	2 m+
77080...	175	185	195
Ident. No.	○	○	○

Prod. Gr. 774

ARE YOU LOOKING FOR PRODUCTS THAT MEET THE TOUGHEST DEMANDS?

WE HAVE WHAT IT TAKES.

For a complete range of products that meet the toughest demands, visit www.iconridge.com



Work place cranes

For operation in the production hall

That is what the gantry crane offers to you:

- Crane track length 4 m
- Suitable for commissioning and loading procedures as well as tool changes on machines
- Thanks to the construction, which can be disassembled into 3 parts, it can be stored in a very flexible and space-saving manner
- Screw and clamping joints guarantee the easiest installation and disassembly as well as continuous adjustment of clamping widths

Advantages: The gantry cranes can be disassembled in a few steps into transportable individual components and can be quickly assembled at another operation site.

Design versions:

- EVP-KBK single-girder full gantry crane, crane girder KBK II or KBK II-H
- ZVP-KBK twin-girder, full gantry crane, crane girder KBK II or KBK II-H
- D-IVP single-girder full gantry crane, crane girder I-profile, optionally with telescopic height adjustment

Colour: RAL 2002 – red, track and supports RAL 9005 – black, chassis

RAL 2002 – red, trolley frame Small parts galvanised.

Slewing cranes are workplace components and supplement other in-house transportation. They allow parts to be **transported within the immediate vicinity of the workstation – with a radius of up to 360°.**

Heavy parts of up to 10,000 kg can be easily moved on chassis with runners mounted on anti-friction bearings.



DEMAG Wall slewing crane

A TEREX BRAND swivel range approx. 270°, complete with electric chain hoist

Application:

For lifting and transport of workpieces of all kinds. Material is transported quickly and placed down accurately within a large radius Ideal if structural conditions allow mounting on the wall or on a pillar. Rated according to DIN 15018 H2 B3 and UVV-BGV D6 for operation in production halls.

Execution:

- Robust wall console for mounting
- Boom with hollow profile rails and extremely smooth running chassis
- Complete with electric chain hoist DC-Com, hook displacement 4 m, see no. 77099 012-020
- Power supply: Tow line
- Colour: RAL 1007, daffodil yellow, boom powder-coated, console painted with one-coat 2K lacquer

Delivery:

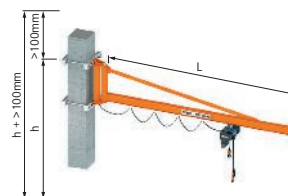
Console, boom, chassis, electrical fittings or power supply, hoist
Mounting parts for wall console not included in the scope of delivery.

Notes:

Available upon request: Electric chain hoist DC-Pro, mounting parts for wall console, embracing consoles for column adjustment, swivel limitation, other carrying capacities, other lifting speeds, overhangs up to 7 m

Technical data:

- Pivot range: 270 Degree
- Colour: Daffodil yellow RAL 1007



Advantage:

- Extremely smooth running of the hoist in the hollow rail specially designed for transporting tasks
- Protected against soiling
- Easy swivelling thanks to low tare weight of boom

Load-carrying capacity (kg)	125	125	250	250	500	500	1000	1000
Overhang (mm)	3000	4000	3000	4000	3000	4000	3000	4000
Overall height (mm)	584	584	584	840	840	840	840	1120
Lifting device design	DEMAG chain hoist DC-Com, DC 1-125 single chain	DEMAG chain hoist DC-Com, DC 1-125 single chain	DEMAG chain hoist DC-Com, DC 2-250 single chain	DEMAG chain hoist DC-Com, DC 2-250 single chain	DEMAG chain hoist DC-Com, DC 5-500 single chain	DEMAG chain hoist DC-Com, DC 5-500 single chain	DEMAG chain hoist DC-Com, DC 10-1000 single chain	DEMAG chain hoist DC-Com, DC 10-1000 single chain
77110...	Ident. No. 217 (○)*	227 (○)*	237 (○)*	247 (○)*	257 (○)*	267 (○)*	277 (○)*	287 (○)*

Prod. Gr. 774

Source: Hahn+Kolb Werkzeuge GmbH
Technical data subject to change.
Availability subject to country specific rules and regulations.

www.iconridge.com

ICON RIDGE



Pillar slewing cranes

For operation in the production hall



DEMAG Pillar slewing crane

A TEREX BRAND swivel range approx. 300°, complete with electric chain hoist

Application:

For the lifting and moving of heavy workpieces of all kinds. Materials can be rapidly transported and accurately lowered within a certain radius. Column required for the assembly of a crane system if structural conditions mean there are no other options. Rated according to DIN 15018 H2 B3 and UVV-BGV D6 for operation in production halls.

Execution:

- Robust column with long-lasting geometry
- Boom with hollow profile rails and extremely smooth running chassis
- Complete with electric chain hoist DC-Com, hook displacement 4 m, see no. 77099 012-020
- Power supply: Tow line
- Colour: RAL 1007, daffodil yellow, boom powder-coated, column painted with one-coat 2K lacquer

Advantage:

- Extremely smooth running of the hoist in the hollow rail specially designed for transporting tasks
- Protected against soiling
- Easy swivelling thanks to low tare weight of boom

Delivery:

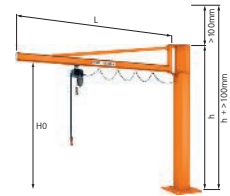
Column, boom, chassis, electrical fittings or power supply, hoist

Notes:

Available upon request: Chain hoist DC-Pro, support plate for pillar slewing crane for free installation, with forklift pockets for in-house transport, pillar slewing crane with I-profile, other carrying capacities, other lifting speeds, other column lengths, overhangs up to 7 m

Technical data:

- Pivot range: 300 Degree
- Colour: Daffodil yellow RAL 1007

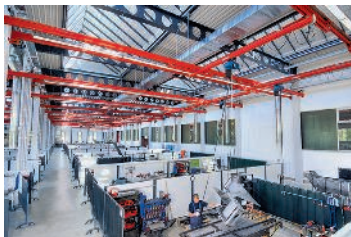


Load-carrying capacity (kg)			125	125	250	250	500	500	1000	1000
Overhang (m)			3	4	3	4	3	4	3	4
Overall height (mm)			3004	3004	3004	3499	3499	3499	3499	4000
Lower edge of crane boom (mm)			2492	2492	2492	2736	2736	2736	2736	2979
Lifting device design			DEMAG chain hoist DC-Com, DC 1-125 single chain	DEMAG chain hoist DC-Com, DC 1-125 single chain	DEMAG chain hoist DC-Com, DC 2-250 single chain	DEMAG chain hoist DC-Com, DC 2-250 single chain	DEMAG chain hoist DC-Com, DC 5-500 single chain	DEMAG chain hoist DC-Com, DC 5-500 single chain	DEMAG chain hoist DC-Com, DC 10-1000 single chain	DEMAG chain hoist DC-Com, DC 10-1000 single chain
Pillar slewing crane	77111...	Ident. No.	217 (○)*	227 (○)*	237 (○)*	247 (○)*	257 (○)*	267 (○)*	277 (○)*	287 (○)*
Foundation anchoring	77111...	Ident. No.	311 (○)*	321 (○)*	321 (○)*	331 (○)*	331 (○)*	341 (○)*	341 (○)*	351 (○)*
Dowel anchoring	77112...	Ident. No.	003 (○)*	005 (○)*	005 (○)*	007 (○)*	007 (○)*	009 (○)*	009 (○)*	011 (○)*
Swivel limitation	77113...	Ident. No.	011 ○	011 ○	011 ○	013 ○	013 ○	013 ○	013 ○	015 ○

Prod. Gr. 774



suspension tracks and cranes from the modular crane system KBK



From an individual workstation to a complex material flow solution: Implement your exact specific requirements with the Demag KBK system. Quick and efficient. This modular system enables suspended cranes, suspension tracks, pillar slewing cranes and wall slewing cranes to be combined. The high flexibility of the system allows KBK equipment to also be easily integrated into any production infrastructure – and converted at any time.



KBK Aluline



KBK steel



VETTER crane system PROFI ERGOLINE ergonomic workstation systems

We use the PROFI-ERGO LINE systems to create workstation systems that facilitate ergonomic handling of loads of up to 1000 kg. The crane and track rails are made of aluminium profiles and the smooth-running chassis move in these. We use the ingenious patented VETTER reinforcement profile to reinforce the aluminium profiles without sacrificing the outstanding smooth-running properties. The PROFI-ERGO LINE systems can be easily adapted to the conditions on site. Height-adjustable supports enable effortless adjustment during assembly. Span widths of up to 8 metres reduce the number of supports.

Height-adjustable supports:

Outstanding flexibility thanks to universally adjustable supports. The patented system from VETTER has a modular design. This enables the system to be effortlessly adapted to the conditions on site.

VETTER reinforcement profile:

Aluminium rails offer outstanding smooth-running characteristics but are significantly softer than comparable steel rails. We use the ingenious patented VETTER reinforcement profile to combine the advantages of aluminium with the rigidity of steel.

Advantages:

- A fresh take on ergonomics
- Smooth running perfected
- Degree of freedom in all directions thanks to ball bearing gimbal mounting
- Whereas traditional manually operated crane systems are easiest to move from the centre, the VETTER chassis system makes it possible for the operator to use minimal force to move the crane, no matter their position
- A unique level of user-friendliness



VETTER
Krantchnik

DO YOU NEED
ELECTRIC TOOLS?

WE HAVE WHAT IT TAKES.

For a complete range of products that meet the toughest demands, visit www.iconridge.com





VETTER gantry cranes

PROFI PA (PA) mobile gantry crane

That is what the gantry crane offers to you:

- Crane track length 4 m
- Suitable for commissioning and loading procedures as well as tool changes on machines
- Thanks to the construction, which can be disassembled into 3 parts, it can be stored in a very flexible and space-saving manner
- Screw and clamping joints guarantee the easiest installation and disassembly as well as continuous adjustment of clamping widths

Advantages: The gantry cranes can be disassembled in a few steps into transportable individual components and can be quickly assembled at another operation site.

What the Vetter gantry crane offers you:

- Height-adjustable with and without rack-and-pinion jack (on request)
- Robust torsion-resistant design of section tube with tracks made from IPE profile
- Flexible use and straightforward relocation
- Easy to dismantle, crane can be constructed and dismantled anywhere for occasional use
- Ideal to relieve the load on bridge cranes
- Ideal in areas that forklift trucks cannot access
- Help wherever you need it
- For temporary workstation set-ups
- Load capacity up to 3200 kg and clear width up to 6000 mm
- Made in Germany

Designs:

- Classified in accordance with EN 15011 HC2 S2 HD2 for light industrial use
- Electrics: lockable power cut-off switch, CEE surface-mounted connector, power supply as round trailing cable
- Operating voltage: 400 V/50 Hz
- Detailed documentation
- Electric chain hoist with manual sliding chassis – 2-setting lifting speed
- Stable running gear with 4 swivelling steering wheels made of high-strength polyamide, incl. wheel stop
- Paint system for operation in production halls, crane construction steel-shot blasted and painted in RAL 5015 sky blue (target layer thickness 80 µm)



Design versions:

- EVP-KBK single-girder full gantry crane, crane girder KBK II or KBK II-H
- ZVP-KBK twin-girder, full gantry crane, crane girder KBK II or KBK II-H
- D-IVP single-girder full gantry crane, crane girder I-profile, optionally with telescopic height adjustment

Colour: RAL 2002 – red, track and supports RAL 9005 – black, chassis RAL 2002 – red, trolley frame Small parts galvanised.



Load-bearing capacity kg	500	500	500	1000	1000	1000	2000	2000	2000
Clear width (LB) mm	3000	4000	5000	3000	4000	5000	3000	4000	5000
Overall width (A) mm	3445	4445	5445	3510	4510	5510	3690	4690	5690
Structural height (BH) mm	3212	3212	3232	3232	3252	3292	3355	3355	3355
Wheelbase (R) mm	1500	1500	1500	1500	1500	1500	2000	2000	2000
Bottom edge of support (UK) mm	3000	3000	3000	3000	3000	3000	3000	3000	3000

Workshop crane, hydraulic

Portable and collapsible

Application:

For lifting heavy loads in small spaces if the crane can move below the load. Ideal for removing and installing engines and for in-house transport.

Execution:

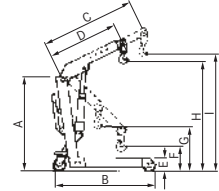
- Collapsible
- Collapsed storage area 350 x 400 mm
- No free overhang in front of wheels
- Mobile
- Load hook guard
- Pressure relief valve
- Drain valve with dead man's switch
- 2 steering rollers, 2 runners

Advantage:

- Extremely easy to store thanks to small collapsed dimensions
- Easy to move, 360° rotating steering wheels
- Crane boom adjustable in just a few simple steps

Technical data:

- Colour: Flame red RAL 3000



Min./max. load-carrying capacity	250-500 kg	300-1000 kg
Min./max. throat depth (D/C)	1010-1320 mm	1000-1300 mm
Min./max. overall height	1540-2390 mm	1560-2620 mm
Min./max. lift height with minimum throat depth (G/H)	400-2040 mm	400-2240 mm
Min./max. lift height with maximum throat depth (F/I)	100-2190 mm	110-2420 mm
Inner running gear width (L) (mm)	730	880
Outer running gear width (M) (mm)	860	1000
Running gear length (B) (mm)	1530	1600
Underclearance (E) (mm)	143	170
Load-carrying capacity (kg)	500	1000
Max. overall height (mm)	2390	2620
77139...	Ident. No. 010 (○)*	020 (○)*

Prod. Gr. 775

Workshop crane, hydraulic

Portable and collapsible, with extra-flat running gear

Application:

For lifting heavy loads in small spaces if the crane can move below the load. Ideal for removing and installing engines and for in-house transport. Particularly suitable for Euro pallets.

Execution:

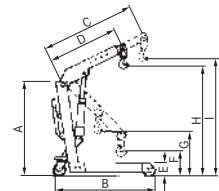
- Collapsible
- Collapsed storage area 350 x 400 mm
- No free overhang in front of wheels
- Mobile, with extra flat running gear
- Load hook guard
- Pressure relief valve
- Drain valve with dead man's switch
- 2 steering rollers, 2 runners

Advantage:

- Extremely easy to store thanks to small collapsed dimensions
- Easy to move, 360° rotating steering wheels
- Crane boom adjustable in just a few simple steps
- Versatile use thanks to flat running gear

Technical data:

- Underclearance (E): 80 mm
- Colour: Flame red RAL 3000



Min./max. load-carrying capacity	250-500 kg	300-1000 kg
Min./max. throat depth (D/C)	1010-1320 mm	1000-1300 mm
Min./max. overall height	1490-2340 mm	1480-2540 mm
Min./max. lift height with minimum throat depth (G/H)	400-1990 mm	400-2160 mm
Min./max. lift height with maximum throat depth (F/I)	100-2140 mm	110-2340 mm
Inner running gear width (L) (mm)	730	880
Outer running gear width (M) (mm)	860	1000
Running gear length (B) (mm)	1530	1600
Load-carrying capacity (kg)	500	1000
Max. overall height (mm)	2340	2540
77139...	Ident. No. 015 (○)*	025 (○)*

Prod. Gr. 775

Source: Hahn+Kolb Werkzeuge GmbH
Technical data subject to change.
Availability subject to country specific rules and regulations.

www.iconridge.com

Workshop crane, hydraulic

Portable

Application:

For lifting heavy loads if the crane can move below the load.

Execution:

- Robust design
- Safe oil hydraulics with industry-standard engine oil
- No free overhang in front of wheels
- Mobile
- Load hook guard

- Pressure relief valve
- Drain valve with dead man's switch
- 2 steering rollers, 2 runners

Advantage:

- Robust design
- Easy to move, 360° rotating steering wheels
- Crane boom adjustable in just a few simple steps

Technical data:

- Colour: Flame red RAL 3000



Min./max. load-carrying capacity	250-500 kg	300-1000 kg	500-1500 kg	700-2000 kg
Min./max. throat depth (D/C)	1040-1350 mm	1210-1510 mm	1370-1820 mm	1470-1920 mm
Min./max. overall height	1620-2560 mm	1750-2450 mm	1885-3300 mm	1960-3345 mm
Min./max. lift height with minimum throat depth (G/H)	650-2160 mm	670-2100 mm	850-2750 mm	900-2800 mm
Min./max. lift height with maximum throat depth (F/I)	410-2360 mm	450-2250 mm	600-3100 mm	650-3145 mm
Inner running gear width (L) (mm)	750	930	835	985
Outer running gear width (M) (mm)	885	1060	1050	1200
Running gear length (B) (mm)	1260	1520	1800	2000
Underclearance (E) (mm)	143	170	200	240
Load-carrying capacity (kg)	500	1000	1500	2000
Max. overall height (mm)	2560	2450	3300	3345
77140...	Ident. No. 010	020	030	040
	(○)*	(○)*	(○)*	(○)*

Prod. Gr. 775

ARE YOU LOOKING FOR PRODUCTS
THAT MEET THE TOUGHEST DEMANDS?

WE HAVE WHAT IT TAKES.

For a complete range of products that meet the toughest demands, visit www.iconridge.com

Counterbalance crane

With counterweight block

Application:

For direct approaches to machinery, ramps etc., ideal for loading and unloading in truck loading areas and for lifting and lowering loads in front of loading ramps and machinery.

Execution:

- With counterbalancing block
- Weighted towards the rear
- Collapsible column
- Large ball bearing mounted wheels
- Practical tool tray
- Double-acting manual hydraulics
- Steering brake shank with double wheels
- Clearance height 1800 mm, clearance width 800 mm

Advantage:

- Very compact design
- Short running gear
- Extremely manoeuvrable
- Full boom can project over the load
- Base protection

77140... | Ident. No. 080 (O)*

Prod. Gr. 770

Delivery:

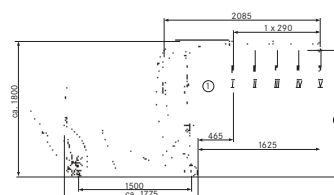
Includes filling, ready for use immediately.

Technical data:

- Model: ITI500N
- Min./max. load-carrying capacity: 175-500 kg
- Min./max. throat depth: 925-2085 mm
- Min./max. overall height: 1600-1880 mm
- Min./max. lift height with minimum throat depth: 970-2300 mm
- Min./max. lift height with maximum throat depth: 0-2950 mm
- Outer running gear width: 800 mm
- Running gear length: 1500 mm
- Number of steering rollers: 1 PCS
- Castor diameter: 150 mm
- Material of steering wheels: Polyamide
- Number of load rollers: 2 PCS
- Load roller diameter: 150 mm
- Load roller material: Polyamide
- Colour: Traffic red RAL 3020



ITI folded



ITI dimensional drawing

Counterweight crane

With counterweight boxes for filling

Application:

For direct approaches to machinery, ramps etc., ideal for loading and unloading in truck loading areas and for lifting and lowering loads in front of loading ramps and machinery. Industrial design for frequent use in the workshop or production settings and for many other lifting and transport procedures.

Execution:

- With counterbalancing weight box (empty)
- Mechanical travel positioner
- 4-way adjustable hydraulics, 13-way adjustable boom
- Tried-and-tested precision hydraulics for optimum lifting and long load retention
- Clearance height 1700 mm, clearance width 800 mm

Advantage:

- A single person can move and deliver a total weight of up to 2.36 t effortlessly and with control
- Extremely short running gear
- Easy to manoeuvre thanks to a steering brake tow bar

Delivery:

Includes test book. With empty counterbalancing weight box, filling deliverable upon request for an extra charge. The device is only ready for use after the box has been filled.

Technical data:

- Min./max. throat depth: 730-2530 mm
- Min./max. overall height: 1650-1700 mm
- Min./max. lift height with minimum throat depth: 970-2400 mm
- Min./max. lift height with maximum throat depth: 50-3750 mm
- Outer running gear width: 800 mm
- Number of steering rollers: 1 PCS
- Castor diameter: 200 mm
- Number of load rollers: 2 PCS
- Load roller diameter: 200 mm
- Load roller material: Polyamide
- Colour: Traffic red RAL 3020



Ident. No. 108



Mechanical travel positioner for travel support and exact positioning

Model	HB500GKFAPO	HB1000GK-FAPO
Min./max. load-carrying capacity	90-500 kg	90-1000 kg
Running gear length (mm)	990	1590
Material of steering wheels	Polyurethane	Polyamide
Version		
77140... Without filling	Ident. No. 106 (O)*	108 (O)*

Prod. Gr. 770

Yale Roller trolley

Application:

Suitable for the insertion in all manual lifting devices.

Execution:

- Calculated in line with DIN 15018
- Complies with BGV D6 cranes
- Can be adjusted for various profiles (INP, IPE, IPB and other beam ranges)
- Low design height

- Accurate positioning thanks to lug arm with counter-thread
- Central suspension, permanently lubricated runners, sealed and mounted on ball bearing
- Anti-tipping mechanism and wheel failure supports fitted as standard

Technical data:

- Max. flange width: 220 mm



Load-carrying capacity (kg)	500	1000	2000
Min. flange width (mm)	50	50	66
Min. curve radius (m)	0.9	0.9	1.15
77167... Ident. No.	100	110	120

Prod. Gr. 775

Yale Support clip

Application:

Attachment point for lifting devices, cable return pulleys and loads on supports.

Execution:

- Spindle mechanism allows rapid and simple attachment to the support flange with fixed, secure positioning

Load-carrying capacity (kg)	1000	2000	3000
Min. flange width (mm)	75	75	80
Max. flange width (mm)	230	230	320
77141... Ident. No.	010	020	030

Prod. Gr. 775



Yale Roller clamp

Application:

Easy-mount assembly aids for attaching and moving loads on support profiles. Ideal for assembly and repair work. Easy to fix and remove.

Execution:

- Rapid adjustment to arm width by turning the central spindle
- Secure locking thanks to counter-lever
- Spindle and attachment straps galvanised for corrosion protection

Load-carrying capacity (kg)	1000	2000	3000
Min. flange width (mm)	60	75	75
Max. flange width (mm)	150	200	200
Min. curve radius (m)	0.6	0.9	1.15
77141... Ident. No.	210	220	230

Prod. Gr. 775



Drum grippers

Application:

For the safe gripping, lifting, transportation and loading of standard roll hoop and metal channel drums.

Technical data:

- Load-carrying capacity: 500 kg
- Colour: Yellow orange

Notes:

For collection trays and transportation devices for drums, see chapter "Environment".



Ident. No. 010



Ident. No. 025



Ident. No. 100

Max. gripping width (mm)	640	-	910
77180... Ident. No.	010	025	100

Prod. Gr. 775

Lever clamp for vertical lifting

Load-bearing capacity: up to 300 kg

Application:

For the safe lifting and transporting of sheet metal, supports and profiles.

Execution:

- Safety lever which can be remotely unlocked with the supplied cable
- Corrosion-resistant
- All parts can be replaced
- High-quality materials and special steels
- Surface hardness up to a maximum of 30 HRC (300 HB)

Advantage:

- Optimum safety
- Low tare weight and high carrying capacity

Delivery:

Cable included

Notes:

Hoisting clamps with larger carrying capacities deliverable upon request.

Technical data:

- Colour: Yellow orange



Max. gripping width (mm)		19	25	30
Load-carrying capacity (kg)		1000	2000	3000
77180...	Ident. No.	310	320	330
		●	○	○

Prod. Gr. 775

Lever clamp for turning and vertical lifting

Load-bearing capacity: up to 2000 kg

Application:

For the safe turning, lifting and transporting of sheet metal, supports and profiles, particularly suitable for use together (2 or more hoisting clamps).

Execution:

- Multi-directional suspension eyes
- Low tare weight and large gripping range
- Safety locking thanks to folding bolt mechanism with large operating ring
- Die-forged clamp body
- Toothed segment, counter-bearing and all additional functional parts made of alloyed special steel
- Surface hardness up to a maximum of 30 HRC (300 HB)

Advantage:

- Optimum safety
- Continues to function even if the clamps are not positioned in the pulling direction
- Can be used for many different purposes, user-friendly thanks to compact design
- Extremely durable

Notes:

The carrying capacity is reduced by 50% for oblique lifts of over 45°.

Technical data:

- Colour: Yellow orange



Max. gripping width (mm)		19	28
Load-carrying capacity (kg)		1000	2000
77180...	Ident. No.	410	420
		○	○

Prod. Gr. 775

Round-nose pliers for gripping round bars

Load-bearing capacity: up to 1000 kg

Application:

For the safe lifting and transporting of round steel bars, pipes etc.

Execution:

- Sturdy steel structure
- Safety lever for stopping the open pliers

Technical data:

- Colour: Yellow orange



Max. gripping width (mm)		250	200	250
Load-carrying capacity (kg)		250	500	1000
77179...	Ident. No.	010	020	030
		(○)*	(○)*	(○)*

Prod. Gr. 775

Load cross beam

Load-bearing capacity: up to 5000 kg

Application:

For the safe and regulatory-compliant lifting of loads.

Execution:

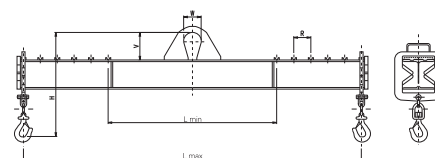
- With 2 adjustable safety swivel hooks
- One-point suspension, suitable for load hooks in line with DIN 15401 etc.

Notes:

Non-adjustable; other lengths, higher carrying capacity and load turning devices for workpieces up to 10,000 kg deliverable upon request.

Technical data:

- Colour: Yellow orange



Load-carrying capacity (kg)	Max. hook spacing (L max) (mm)	Min. hook spacing (L min) (mm)	Grid dimension (mm)	Overall height (H) (mm)	Eyelet height (V) (mm)	Eyelet Ø (W) (mm)	77421... Ident. No.	
1000	1000	500	125	430	110	50	110	(○) ⁺
1000	2000	1000	100	450	110	50	120	(○) ⁺
1000	3000	1500	150	430	110	50	130	(○) ⁺
2000	2000	1000	100	460	120	60	220	(○) ⁺
2000	3000	1500	150	480	120	60	230	(○) ⁺
2000	4000	2000	200	500	120	60	240	(○) ⁺
3000	2000	1000	100	515	150	70	320	(○) ⁺
3000	3000	1500	150	530	150	70	330	(○) ⁺
3000	4000	2000	200	550	150	70	340	(○) ⁺
5000	3000	1500	150	630	180	85	530	(○) ⁺
5000	4000	2000	200	650	180	85	540	(○) ⁺
5000	5000	2500	250	670	180	85	550	(○) ⁺

Prod. Gr. 771

Permanent NEO lifting magnet

3-fold safety

Application:

For the secure lifting of sheet metals, profiles, panels, round- and bar-shaped parts or for loading and unloading machines.

Execution:

- With 2 longitudinal poles and vee block
- High-quality neodymium magnetic material
- Large load lug

Advantage:

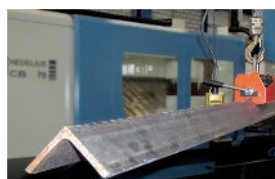
- Large lifting capacity with low tare weight and small dimensions
- Robust, low-maintenance, user-friendly
- Easy to switch on and off using the hand lever, with safety lock

Delivery:

With test certificate

Technical data:

- Colour: Orange



Special design for angle-shaped irons on request

Load-carrying capacity (kg)	150	300	600	1200	2000
Load-carrying capacity for round materials (kg)	50	125	250	500	1000
Tear-off weight certified (kg)	400	800	1600	3200	6000
For min./max. round material Ø	50-100 mm	60-200 mm	65-270 mm	100-300 mm	150-350 mm
Suitable for min. sheet metal thickness (mm)	2	4	6	10	15
Surface area length (mm)	95	151	246	306	480
Surface area width (mm)	60	100	120	146	165
Height up to load hook (mm)	110	168	168	216	253
77301... Ident. No.	011	013	015	017	020

Prod. Gr. 706

Hand pick-up magnet

High magnetic force for unlimited period of time

Application:

For the safe manual transport of sheet metal and steel parts.

Execution:

- **Ref. no. 010** for thin sheets and small pieces.
- **Ref. no. 020** particularly for medium- and large-sized sheets (most popular model).
- **Ref. no. 030** for thick plates, heavily scaled plates, heavy workpieces.

Advantage:

- Entirely maintenance-free
- Permanently high magnetic force
- No magnetisation of workpieces

Notes:

Full adhesive force is only possible on workpieces with a smooth, flat and clean surface, easily magnetisable substances and sufficient thickness. Only around 1/3 of the adhesive force will be achieved for scaled surfaces.



Load-carrying capacity (kg)	120	170	300
Suitable for min./max. sheet metal thickness	1-2 mm	1-4 mm	-
Surface area length (mm)	140	140	160
Surface area width (mm)	84	116	180
77350...	Ident. No.	010	020
		○	○

Prod. Gr. 706

Crane pick-up magnet

High magnetic force for unlimited period of time

Application:

For the safe transport of sheet metal and steel parts by crane.

Execution:

- With a crane lug for crane operation
- For horizontal and vertical lifting
- Attached sheets of metal can be swivelled from a vertical position to a horizontal position and vice versa
- Board format 1000 x 2000 mm requires only 1 magnetic claw, board format 1500 x 3000 mm requires 2 pieces together with one spreader. When working with stacks of metal sheets, only 1 sheet may be lifted at a time.

Advantage:

- Entirely maintenance-free
- Permanently high magnetic force
- No magnetisation of workpieces

Notes:

Full adhesive force is only possible on workpieces with a smooth, flat and clean surface, easily magnetisable substances and sufficient thickness. Only around 1/3 of the adhesive force will be achieved for scaled surfaces.

Technical data:

- Suitable for min. sheet metal thickness: 4 mm
- Surface area length: 290 mm



Load-carrying capacity (kg)	250	300
Surface area width (mm)	125	180
77350...	Ident. No.	040
		○

Prod. Gr. 706

Bohle Hand vacuum lifter with a single aluminium suction head

www.bohle-group.com

Load-bearing capacity 30 kg



Application:

For the safe and secure lifting, carrying and holding of lightweight discs, sheets and panels.

Execution:

- Lever-type vacuum lifter

Advantage:

- One-handed operation possible
- For rapid and efficient working procedures

- Ergonomic handle

- "red dot" design award winner

Technical data:

- Load-carrying capacity: 30 kg
- Direction of force: Perpendicular
- Material: Aluminium
- Number of suction heads: 1 PCS
- Suction head diameter: 120 mm
- Number of pieces in assortment/set: 1 PCS



Hand vacuum lifter with a single aluminium suction head	77178...	Ident. No.	021
			●

Prod. Gr. 775

Hand vacuum lifter with 2 moving suction heads made from plastic

Load-bearing capacity 45 kg



Application:

For the safe and secure lifting, carrying and holding of discs, sheets and panels. Suitable for all materials with gas-tight surfaces such as glass, plastic, metal, coated wood and marble. Particularly suitable for convex surfaces such as car windscreens etc.

Execution:

- Lever-type vacuum lifter
- 2 mobile plastic suction heads

Hand vacuum lifter with 2 moving suction heads made from plastic	77178...	Ident. No.	023
Rubber discs for manual vacuum lifters	77178...	Ident. No.	520

Prod. Gr. 775

Technical data:

- Load-carrying capacity: 50 kg
- Direction of force: Parallel
- Material: Plastic
- Number of suction heads: 2 PCS
- Suction head diameter: 120 mm
- Number of pieces in assortment/set: 1 PCS



Manual vacuum lifter with 2 aluminium suction heads

Longitudinal handle, load capacity 70 kg



Application:

For the safe and secure lifting, carrying and holding of discs, sheets and panels. With additional sealing lip for slightly convex or textured surfaces.

Execution:

- Lever-type vacuum lifter
- 2 aluminium suction heads
- Handle mounted lengthways to the suction heads

Advantage:

- Ergonomic handle

Manual vacuum lifter with 2 aluminium suction heads	77178...	Ident. No.	035
Rubber discs for manual vacuum lifters	77178...	Ident. No.	525

Prod. Gr. 775

Notes:

Design with vacuum safety indicator deliverable upon request.

Technical data:

- Load-carrying capacity: 60 kg
- Direction of force: Parallel
- Material: Aluminium
- Number of suction heads: 2 PCS
- Suction head diameter: 120 mm
- Number of pieces in assortment/set: 1 PCS



Hand vacuum lifter with 2 suction heads

Load-bearing capacity 60 kg



Application:

For the safe and secure lifting, carrying and holding of discs, sheets and panels.

Execution:

- Bell-shaped vacuum lifter
- 2 suction discs

Advantage:

- One-handed operation possible
- For rapid and efficient working procedures

Hand vacuum lifter with 2 suction heads	77178...	Ident. No.	045
-----------------------------------------	----------	------------	-----

Prod. Gr. 775

Technical data:

- Load-carrying capacity: 60 kg
- Direction of force: Perpendicular
- Material: Aluminium
- Number of suction heads: 2 PCS
- Suction head diameter: 130 mm
- Number of pieces in assortment/set: 1 PCS



Bohle Hand vacuum lifter with 1 aluminium suction head

www.bohle-group.com With vacuum pump, load capacity of 30-120 kg



Application:

For the safe and secure lifting, carrying and holding of heavy discs, sheets and panels. Suitable for all materials with flat and gas-tight surfaces.

Execution:

- Pump vacuum lifter
- 1 plastic suction head
- Rounded plunger with red ring for vacuum control
- Ergonomic handle with non-slip coating

Advantage:

- 100% secure

Hand vacuum
lifter with 1
aluminium
suction head

77178...

Ident. No.

060

Prod. Gr. 775

Delivery:

In a protective case

Technical data:

- Load-carrying capacity: 120 kg
- Direction of force: Parallel
- Material: Plastic
- Number of suction heads: 1 PCS
- Suction head diameter: 210 mm
- Number of pieces in assortment/set: 1 PCS



Bohle Manual vacuum lifter set

www.bohle-group.com 2 hand vacuum lifters with 1 aluminium suction head in case



Application:

For the safe and secure lifting, carrying and holding of lightweight discs, sheets and panels. With additional sealing lip for slightly convex or textured surfaces.

Execution:

- 2 manual vacuum lifters with 1 aluminium suction head
- Lever-type vacuum lifter
- Robust case

Manual
vacuum lifter
set

77178...

Ident. No.

621

Prod. Gr. 775

Advantage:

- Handy for protecting and storing vacuum lifters
- Vacuum lifter with ergonomic handle design
- One-handed operation possible
- For rapid and efficient working procedures

Technical data:

- Load-carrying capacity: 30 kg
- Direction of force: Perpendicular
- Material: Aluminium
- Suction head diameter: 120 mm
- Number of pieces in assortment/set: 2 PCS



Bohle Hand vacuum lifter set

www.bohle-group.com 2 hand vacuum lifters with 2 aluminium suction heads in case



Application:

For the safe and secure lifting, carrying and holding of discs, sheets and panels.

Execution:

- 2 manual vacuum lifters with 2 aluminium suction heads
- Lever-type vacuum lifter
- Robust case

Hand vacuum
lifter set

77178...

Ident. No.

635

Prod. Gr. 775

Advantage:

- Handy for protecting and storing vacuum lifters
- Vacuum lifter with ergonomic handle design

Technical data:

- Load-carrying capacity: 60 kg
- Direction of force: Parallel
- Material: Aluminium
- Suction head diameter: 120 mm
- Number of pieces in assortment/set: 2 PCS





Vacuum lifters Jumbo



JumboErgo with pillar slewing crane
Complete system for ergonomic workpiece handling



JumboFlex
Ergonomic one-hand operation for loads up to 35 kg



JumboErgo
With double suction gripper



JumboSprint
With vacuum sack gripper



JumboFlex
With round suction gripper



Shackles

Straight with screwing bolts

Application:

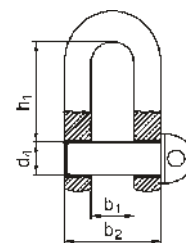
For the absorption of tensile forces at the transition between ropes, wire cables or chains and solid components.

Execution:

- Forged
- Galvanised
- Straight design
- With threaded bolts

Technical data:

- Surface: Galvanised



Load-carrying capacity (kg)	100	160	250	400	600	1000	1600	2000	2500	4000	5000	6000	8000	10000
Shackle Ø (d ₁) (mm)	4	5	7	8	10	13	17	19	21	27	30	34	38	42
Pin Ø (d ₂) (mm)	5	6	8	10	12	16	20	22	24	30	36	39	45	48
Inner height (h ₁) (mm)	15.5	18	24	30	36	49	61	67	73	91	111	119.5	139.5	147
Opening width (b ₁) (mm)	7	8	11	14	17	21	27	30	33	42	47	53	60	66
Outer width (b ₂) (mm)	15	18	25	30	37	47	61	68	75	96	107	121	136	150
Inner width (b ₃) (mm)	7	8	11	14	17	21	27	30	33	42	47	53	60	66
77174... Ident. No.	010	020	030	040	050	060	070	080	090	110	120	130	140	150
	●	●	●	●	●	●	●	●	●	●	●	●	○	(○)*

Prod. Gr. 775

Shackle with high load capacity

Straight with screwing bolts

Application:

For the absorption of tensile forces at the transition between ropes, wire cables or chains and solid components.

Execution:

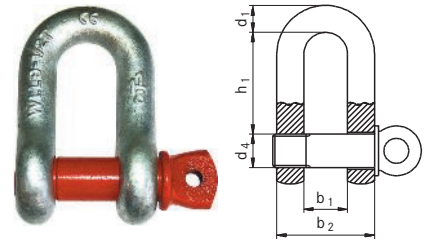
- Straight design
- High strength
- With threaded bolts
- Small dimensions

Advantage:

- Lightweight and easy to handle with a high carrying capacity

Technical data:

- Surface: Galvanised



Load-carrying capacity (kg)	750	1000	1500	2000	3250	4750	6500	8500	12000	
Shackle Ø (d ₁) (mm)	8	10	11	13	16	19	22	25	32	
Pin Ø (d ₂) (mm)	10	11	13	16	19	22	25	28	35	
Inner height (h ₁) (mm)	26	32	37	41	51	60	71	81	100	
Opening width (b ₁) (mm)	13.5	17	19	20	27	32	36	43	51	
Outer width (b ₂) (mm)	29.5	37	41	46	59	70	80	93	115	
Inner width (b ₃) (mm)	13.5	17	19	20	27	32	36	43	51	
77174...	Ident. No.	200	210	220	230	240	250	260	270	290
		●	●	●	●	●	●	●	●	●

Prod. Gr. 775

Shackles

Bowed with screwing bolts

Application:

For the absorption of tensile forces at the transition between ropes, wire cables or chains and solid components.

Execution:

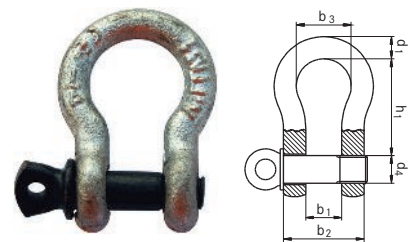
- Curved design
- High strength
- With threaded bolts
- Small dimensions

Advantage:

- Lightweight and easy to handle with a high carrying capacity

Technical data:

- Surface: Galvanised



Load-carrying capacity (kg)	750	1000	1500	2000	3250	4750	6500	8500	12000	
Shackle Ø (d ₁) (mm)	8	10	11	13	16	19	22	25	32	
Pin Ø (d ₂) (mm)	10	11	13	16	19	22	25	28	35	
Inner height (h ₁) (mm)	31	37	43	48	60	71	84	95	119	
Opening width (b ₁) (mm)	13.5	17	19	20	27	32	36	43	51	
Outer width (b ₂) (mm)	29.5	37	41	46	59	70	80	93	115	
Inner width (b ₃) (mm)	21	26	29	33	43	50	58	68	82	
77174...	Ident. No.	300	310	320	330	340	350	360	370	390

Prod. Gr. 775

Whirl

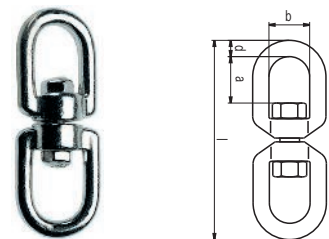
With 2 lugs (twist interceptor)

Application:

For rotating loads; prevents the rotation of the wire cables or chains being transferred while a load is being lifted.

Execution:

- Stainless steel
- 4-fold safety



Load-carrying capacity (kg)		170	250	650	1000	1400
Inner height (a) (mm)		13	15	22	27	32
Inner width (b) (mm)		13	15	20	24	32
Shackle Ø (d) (mm)		5	6	8	10	13
Length (l) (mm)		60	65	90	115	154
77176...	Ident. No.	050	060	080	100	130

Prod. Gr. 775

Source: Hahn+Kolb Werkzeuge GmbH

Technical data subject to change.

Availability subject to country specific rules and regulations.

www.iconridge.com

Snap hooks (DIN 5299)

Galvanised

Application:

For the securing of loads and fixing of materials, as an accessory for wire cables and steel chains.

Notes:

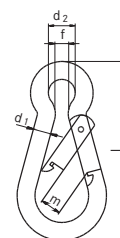
Not to be used in connection with slings.

Execution:

- Galvanised

Technical data:

- Surface: Galvanised



Without screw locking device

Load-carrying capacity (kg)	100	120	180	230	350	450	510	600	650
Length (l) (mm)	50	60	70	80	100	120	140	160	180
Shackle Ø (d ₁) (mm)	5	6	7	8	10	11	12	13	14
Eye width (d ₂) (mm)	8	9	10	10	15	18	20	22	22
Min. inner width (f) (mm)	4	5	8	8	10	11	13	15	15
Opening width (m) (mm)	8	8	8	9	11	16	19	25	35
77174...	500	510	520	530	540	550	560	570	580
Ident. No.	●	●	●	●	●	●	●	●	●

Prod. Gr. 775

Snap hook with screw locking device (DIN 5299)

Galvanised

Application:

For the securing of loads and fixing of materials, as an accessory for wire cables and steel chains.

Notes:

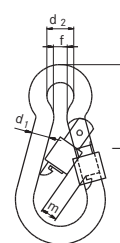
Not to be used in connection with slings.

Execution:

- Galvanised
- With screw locking device

Technical data:

- Surface: Galvanised



With screw locking device

Load-carrying capacity (kg)	180	230	350	450	510	600	650
Length (l) (mm)	70	80	100	120	140	160	180
Shackle Ø (d ₁) (mm)	7	8	10	11	12	13	14
Eye width (d ₂) (mm)	10	10	15	18	20	22	22
Min. inner width (f) (mm)	8	8	10	11	13	18	17
Opening width (m) (mm)	8	9	12	16	19	28	42
77174...	600	610	620	630	640	650	660
Ident. No.	●	●	●	●	●	●	●

Prod. Gr. 775

Chain quick-action closures

Application:

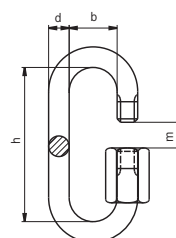
Allows chains to be connected and extended without fuss.

Notes:

Not to be used in connection with slings.

Execution:

- Ident. No. 100–180: Galvanised
- Ident. No. 200–280: Stainless steel



Load-carrying capacity (kg)	50	140	200	275	350	140	200	275	350	50
Inner width (b) (mm)	10	13	14	16	18	13	14	16	18	10
Shackle Ø (d) (mm)	4	5	6	7	8	5	6	7	8	4
Inner height (h) (mm)	29	39	45	54	60	39	45	52	58	29
Opening width (m) (mm)	5	6.5	7.5	8	10	6.5	7.5	8	10	5
Surface	Galvanised	Galvanised	Galvanised	Galvanised	Galvanised	-	-	-	-	-
77175...	100	130	140	160	180	230	240	260	280	200
Ident. No.	●	●	●	●	●	●	●	●	●	●

Prod. Gr. 775

High-strength round steel hooks

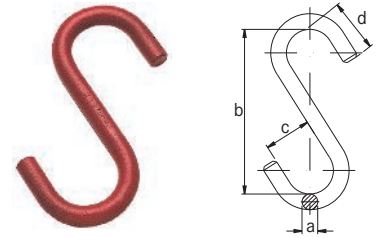
S-hooks with open eyelets

Application:

For the safe lifting and fastening of loads when protection against accidental unhooking is not required.

Execution:

- Tested
- Similar to materials in quality class 8
- With open ends
- Without safety catch
- Painted red



Load-carrying capacity (kg)			200	350	500	700	1000	1400	2000
Shackle Ø (a) (mm)			10	13	16	18	22	26	32
Inner height (b) (mm)			100	130	160	180	220	260	320
Opening width (c) (mm)			30	40	50	55	65	80	95
Hook length (d) (mm)			35	45	56	63	77	91	112
	Shape of the hook								
77210...	S hook	Ident. No.	011 ●	021 ●	031 ●	041 ●	051 ●	061 ●	071 ●

Prod. Gr. 775

High-strength round steel hooks

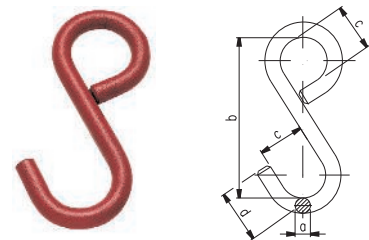
S-hook with closed eyelet

Application:

For the safe lifting and fastening of loads when protection against accidental unhooking is not required.

Execution:

- Tested
- Similar to materials in quality class 8
- With one closed end
- Without safety catch
- Painted red



Load-carrying capacity (kg)	Shackle Ø (a) (mm)	Inner height (b) (mm)	Opening width (c) (mm)	Hook length (d) (mm)	Shape of the hook	S hook with eye
200	10	100	30	35		77210... Ident. No.
350	13	130	40	45		211 ●
500	16	160	50	56		221 ●
700	18	180	55	63		231 ●
1000	22	220	65	77		241 ●
1400	26	260	80	91		251 ●
2000	32	320	95	112		261 ●
						271 ○

Prod. Gr. 775

Joker safety load hook

For round slings and lifting straps

Application:

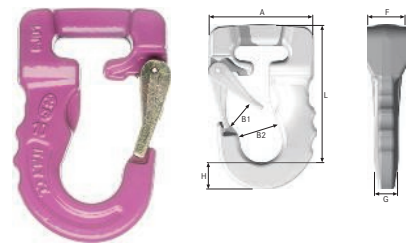
for connecting two slings or as the end sling point hook.

Execution:

- forged steel
- with a safety catch
- colour corresponds to CEN colour coding for textile slings
- hook opening designed to fit the usual sling points

Advantage:

- simple to use thanks to design and colour
- no risk of confusion
- particularly robust
- protects fabric lifting gear



Ident. No. 011, 031-061

Load-carrying capacity (kg)		1000	2000	3000	4000	5000	6000
Colour		Purple	Green	Yellow	Grey	Red	Brown
Outer width (A) (mm)		78	91	113	133	133	133
Öffnungsweite (B ₁) (mm)		26	31	37	43	43	43
Innenbreite (B ₂) (mm)		31	40	50	59.5	59.5	59.5
Dimension F (mm)		16	17	25	36	36	36
Dimension G (mm)		17	21	25	36	36	36
Dimension H (mm)		20	26	32	40	40	40
Dimension L (mm)		123	148	175	223	223	223
77203...	Ident. No.	011	021	031	041	051	061

Prod. Gr. 775

Forklift hook, double

Application:

As an add-on unit for all types of stacker.

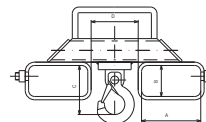
Execution:

- The rotating and pivoting compact hooks are attached outside the dovetail opening. Thereby, the dovetail opening can be fully utilised and there is no jamming of the stacker dovetail on inclined pulling

- Effortless conversion into a safe lifting device
- Double, can be locked on both fork arms via cross arms, load can be divided into 2 fork arms

Technical data:

- Version: Double
- Fork inner distance D: 100 mm
- Inner height B: 65 mm
- Colour: Orange



Fork-lift hooks, double

Load-carrying capacity (kg)	2000	3150
Inner width A (mm)	127	145
77185...	120	132
Ident. No.	O	O

Prod. Gr. 775

RUD® Vario ring bolt, Starpoint type VRS-F Screw-in attachment point, rotatable through 360°

Application:

For the safe attachment of loads.

Execution:

- Forged, high-strength annealed
- 100% electromagnetically crack-tested in accordance with DIN EN 1677-1
- Patented 100% crack-tested hexagon socket screw, non-detachable
- Can be rotated by 360° when fixed
- Stated carrying capacity for adverse load area F
- Powder-coated surface: pink, fluorescent

Advantage:

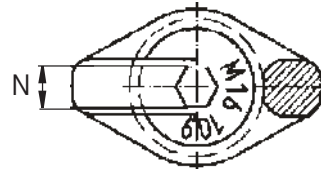
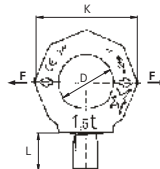
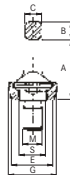
- 4-fold safety
- Can be set in the direction of force to avoid accidental unscrewing or overscrewing
- Tool-free assembly

Delivery:

Includes annealed star profile key for tool-free assembly. Special lengths and other threads upon request.

Technical data:

- Colour: Pink



Gewindeabmessung (M)	L (mm)	W.L.L. (kg)	A (mm)	B (mm)	D (mm)	E (mm)	77232... Ident. No.	
M6	9	100	28	9	20	23	006	●
M8	12	300	35	11	25	25	008	●
M10	15	400	35	11	25	25	010	●
M12	18	750	42	13	30	30	012	●
M16	24	1500	49	15	35	36	016	●
M20	30	2300	58	17	40	41	020	●
M24	36	3200	70	20	49	51	024	●
M30	45	4500	87	26	60	66	030	●
M36	54	7000	103	32	72	76	036	●

Prod. Gr. 781

Sling swivel, quality class 8

Screwed attachment point with ball bearing

Application:

Screw-on, rotating attachment point for lifting heavy loads that need to be rotated or turned. Suitable for safe lifting in accordance with Machinery Directive 2006/42/EC.

Execution:

- quality class 8 - compact, lightweight design, with DGUV certification
- with ball bearing for easier loading, loadable in all directions
- Can be rotated by 360°, swivel range of bracket max. 180°
- Red, powder-coated surface
- permanent rotation under full load not permitted

Advantage:

- 4-way safety in every load direction
- constructed, tested and certified according to GS-OA 15-04 - EN 1677

Delivery:

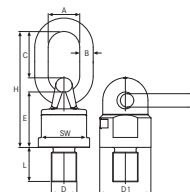
Carrying capacities up to 35 t and other dimensions deliverable upon request.

Notes:

with special thread or special thread length upon request.

Technical data:

- Colour: Red



Thread dimension (D)	L (mm)	W.L.L. (kg)	A (mm)	B (mm)	C (mm)	D ₁ (mm)	E (mm)	H (mm)	Width across flats	77236... Ident. No.
M10	18	300	30	13	46	38	50	105	30 mm	010 ●
M12	18	500	30	13	46	38	50	105	30 mm	012 ●
M16	20	1120	30	13	46	38	50	105	30 mm	016 ●
M20	30	2000	34	16	57	50	61	131	40 mm	020 ●
M24	30	3150	40	18	70	58	68	153	48 mm	024 ●
M30	35	5300	45	22	65	75	80	165	65 mm	030 ●
M30	35	8000	50	23	95	85	95	205	75 mm	032 ●
M36	54	10000	50	23	95	85	95	205	75 mm	036 ●

Prod. Gr. 775

Load block, quality class 10

Application:

Attachment point for lifting loads.

Execution:

- Suitable for secure raising of loads according to Machinery Directive
- 2006/42/EC
- constructed, tested and certified according to GS-OA 15-04 - EN 1677
- DGUV certification
- Magnaflux crack tested to 100%

- can be rotated 360°

- can be swivelled 180°

Advantage:

- load direction 90°, with minimal space requirement
- permanent corrosion protection of screw
- designed for a load of 20,000 load changes

Notes:

Caution: Attachment point not suitable for rotating under load!



Gewindeabmessung	L (mm)	W.L.L. (t)	A (mm)	B (mm)	I (mm)	C (mm)	D (mm)	Schlüsselweite	77239... Ident. No.
M8	15	0.3	57	34	25	10	78	13 mm	108 ●
M10	15	0.63	57	34	25	10	78	17 mm	110 ●
M12	23	1	66	38	32	13.5	85	19 mm	112 ●
M16	24	1.5	66	38	32	13.5	85	24 mm	116 ●
M20	31	2.5	87	55	45	16	111	30 mm	120 ●
M24	37	4	87	55	45	16	111	36 mm	124 ●
M27	37	4	109	66	60	22.5	145	41 mm	127 ●
M30	45	5	109	66	60	22.5	145	46 mm	130 ●
M36	50	7	109	66	60	22.5	145	50 mm	136 ●
M36	59	8	136	78	70	28	190	55 mm	137 ●
M42	75	10	136	78	70	28	190	65 mm	142 ●
M42	63	15	169	97	85	36	242	65 mm	143 ●
M48	71	20	169	97	95	36	242	75 mm	148 ●

Prod. Gr. 775

RUD® Vario load block thread, type VLBG

Screw-in attachment point with folding, rotating load bar

Application:

For the safe attachment of loads in every load direction.

Execution:

- Patented 100% crack-tested, hexagonal bolt, BG tested, non-detachable
- Load bracket collapsible, rotates in all direction
- Integrated heat indicator: during inadmissible overheating over 350 °C the colour changes from pink to jet black

Advantage:

- 4-way safety in every load direction
- Load bracket carries the full load in every installation position

Delivery:

Carrying capacities up to 20 t and screws in special lengths deliverable upon request.

Notes:

On the construction side a thread or through hole suitable for the power line is necessary. Not suitable for rotating movements under load.

Technical data:

- Colour: Pink



360° rotation

Gewindeabmessung	L (mm)	W.L.L. (t)	A (mm)	B (mm)	I (mm)	M (mm)	C (mm)	G (mm)	77239... Ident. No.	
M8	11	0.63	54	34	24	40	12	29	008	●
M10	15	0.9	54	34	24	39	12	29	010	●
M12	18	1.35	54	34	26	38	12	29	012	●
M16	22	2	56	36	30	39	13.5	36	016	●
M20	32	3.5	82	54	45	55	16.5	43	020	●
M24	37	4.5	82	54	45	67	18	43	024	●
M30	49	6.7	103	65	60	67	22.5	61	030	●
M36	63	8	122	82	70	97	26.5	77	036	○

Prod. Gr. 781

Ring bolt, can be rotated and mounted on ball bearing

Application:

Suitable for continuous rotary motion under full weight in axial tensile direction.

Execution:

- suitable for secure raising of loads according to Machinery Directive
- 2006/42/EC
- constructed, tested and certified according to GS-MO 1504 – EN 1677
- DGUV certification

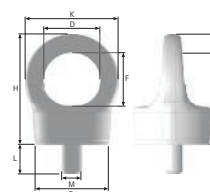
- can be rotated 360°
- 4-way safety in all load directions
- Magnaflux crack tested to 100%

Advantage:

- designed for a load of 20,000 load changes
- suitable for continual rotary motion

Notes:

maximum rotation speed under load-bearing capacity 50 rpm



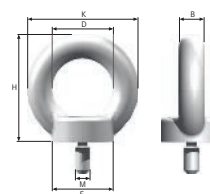
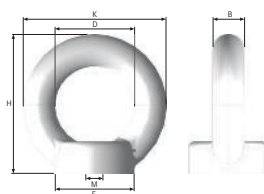
Gewindeabmessung (M)	L (mm)	W.L.L. (t)	A (mm)	B (mm)	D (mm)	K (mm)	E (mm)	F (mm)	77233... Ident. No.	
M12	18	0.75	53.5	11	34	56	44	32	712	●
M16	24	1.5	56.5	13	39	65	56	33	716	●
M20	30	2.3	67	14	42	70	58	40	720	●
M24	38.5	3.2	80	18	52	88	73	44.5	724	●
M30	44	4.5	101	22	62	106	80	53	730	●

Prod. Gr. 775

Ring nut quality class 8 forged, high-strength annealed

Execution:

- Much higher load capacity compared to DIN 580/582 (with vertical load)



Gewindeabmessung M	H (mm)	B (mm)	D (mm)	K (mm)	E (mm)	77233... Ident. No.	
M6	45	10	25	45	25	506	●
M8	45	10	25	45	25	508	●
M10	45	10	25	45	25	510	●
M12	62	14	35	63	35	512	●
M14	62	14	35	63	35	514	●
M16	62	14	35	63	35	516	●
M18	90	20	50	90	50	518	●
M20	90	20	50	90	50	520	●
M24	90	20	50	90	50	524	●
M27	109	24	60	108	65	527	●
M30	109	24	60	108	65	530	●

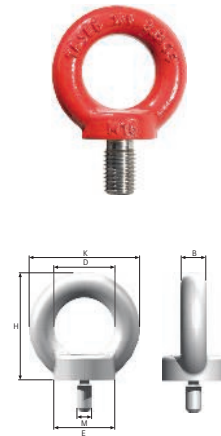
Prod. Gr. 775

Ring bolt quality class 8

forged, high-strength annealed

Execution:

- Much higher load capacity compared to DIN 580/582 (with vertical load)



Gewindeabmessung M	L (mm)	H (mm)	B (mm)	D (mm)	K (mm)	E (mm)	77233... Ident. No.	
M6	13	45	10	25	45	25	106	●
M8	13	45	10	25	45	25	108	●
M10	17	45	10	25	45	25	110	●
M12	21	62	14	35	63	35	112	●
M16	27	62	14	35	63	35	116	●
M20	30	90	20	50	90	50	120	●
M24	36	90	20	50	90	50	124	●
M30	45	109	24	60	108	65	130	●
M36	54	128	28	70	126	75	136	●

Prod. Gr. 7EA

Attachment chains, quality class 8 (EN standard 818-2)

Application:

For the safe and regulatory-compliant lifting of heavy loads.

Execution:

- High-strength, hardened and tempered chain, quality class 8
- Complete with safety load hooks

Advantage:

- High strength
- Low weight
- Special hinge hardening
- High wear resistance
- Large range of accessories



4-stranded, cannot be shortened

Stop chain design	Chain Ø (mm)	Load-carrying capacity at 0-45° tilt angle (kg)	Usable length (m)	1	2	3
				77208... Ident. No.	77208... Ident. No.	77208... Ident. No.
2 threads	6	1600	1120	401 ○	410 ○	411 ○
2 threads	8	2800	2000	402 ○	420 ○	421 ○
2 threads	10	4250	3150	403 ○	430 ○	431 ○

Prod. Gr. 775

Attachment chains (EN standard 818-2)

Application:

For the safe and regulatory-compliant lifting of heavy loads.

Execution:

- High-strength, hardened and tempered chain, quality class 8
- Complete with safety load hooks

Advantage:

- High strength
- Low weight
- Special hinge hardening
- High wear resistance
- Large range of accessories

Stop chain design		4 threads	4 threads	4 threads
Chain Ø (mm)		6	8	10
Load-carrying capacity at 0-45° tilt angle (kg)		2360	4250	6700
Load-carrying capacity at 45-60° tilt angle (kg)		1700	3000	4750
	Usable length (m)			
77208...	2	Ident. No. 510	520	530

Prod. Gr. 775

Attachment chains, quality class 8, with shortening claws (EN standard 818-2)

Application:

For the safe and regulatory-compliant lifting of heavy loads.

Execution:

- High-strength, hardened and tempered chain, quality class 8
- Complete with safety load hooks
- Chain strands, can be shortened with claws

Advantage:

- High strength
- Low weight
- Special hinge hardening
- High wear resistance
- Large range of accessories



with shortening claws to shorten the strands

Stop chain design		Usable length (m)		2	
Chain Ø (mm)		Load-carrying capacity at 0-45° tilt angle (kg)	Load-carrying capacity at 45-60° tilt angle (kg)	77208... Ident. No.	
2 threads	6	1600	1120	440	○
2 threads	8	2800	2000	442	○
2 threads	10	4250	3150	444	○

Prod. Gr. 775

Attachment chains (EN standard 818-2)

Application:

For the safe and regulatory-compliant lifting of heavy loads.

Execution:

- High-strength, hardened and tempered chain, quality class 8
- Complete with safety load hooks
- Chain strands, can be shortened with claws

Advantage:

- High strength
- Low weight
- Special hinge hardening
- High wear resistance
- Large range of accessories

Stop chain design		4 threads	4 threads	4 threads
Chain Ø (mm)		6	8	10
Load-carrying capacity at 0-45° tilt angle (kg)		2360	4250	6700
Load-carrying capacity at 45-60° tilt angle (kg)		1700	3000	4750
	Usable length (m)			
77208...	2	Ident. No. 446	448	450

Prod. Gr. 775



RUD VIP attachment chains

Application:

For the safe and regulatory-compliant lifting of heavy loads.

Design:

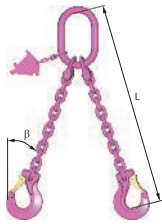
- CrNiMo stainless steel, special tempering, quality class 10
- Bright fluorescent pink powder coating (VIP)
- VIP identification tag with integrated chain test gauge, to check the three discard criteria for attachment chains (diameter wear, pitch elongation and overloading)
- VIP Cobra safety hook with patented wear marks showing the legal discard state without measuring, gauge marks for measuring the width of the hook opening
- Integrated heat indicator: in the event of inadmissible overheating above 400°C, the colour changes to jet black and small bubbles form

Advantage:

- Up to 30% higher load-bearing capacity compared to quality class 8 with the same nominal chain thickness
- No confusion with other quality classes
- Resistant to external mechanical wear and damage
- Longer service life

Delivery:

1-stranded or longer designs, stronger chain diameter, carrying capacities up to 56 t upon request.



Model cannot be shortened



Checking plastic extension due to overload



Checking Ø wear



Checking pitch extension due to nominal thickness wear

Further information, advice and quotations available on request.

Technical Hotline +49 (0)800 9813193

RUD® VIP attachment chains, quality class 10 (EN standard 818-2)

Stop chain design	Chain Ø (mm)	Load-carrying capacity at 0-45° tilt angle (kg)	Load-carrying capacity at 45-60° tilt angle (kg)	Usable length (m)	
				1	2
2 threads	6	2100	1500	77208... Ident. No.	77208... Ident. No.
2 threads	8	3500	2500	600 ○	612 ○
2 threads	10	5600	4000	602 ○	614 ○
2 threads	10	5600	4000	604 ○	616 ○

Prod. Gr. 775

RUD® VIP attachment chains (EN standard 818-2)

Stop chain design	Chain Ø (mm)	Load-carrying capacity at 0-45° tilt angle (kg)	Load-carrying capacity at 45-60° tilt angle (kg)	Usable length (m)	
				1	2
4 threads	6	3150	2250	77208... Ident. No.	77208... Ident. No.
4 threads	8	5250	3750	606 ○	618 ○
4 threads	10	8400	6000	608 ○	620 ○
4 threads	10	8400	6000	610 ○	622 ○

Prod. Gr. 775

RUD® VIP attachment chains, quality class 10, with shortening claws (EN standard 818-2)

Stop chain design	Chain Ø (mm)	Load-carrying capacity at 0-45° tilt angle (kg)	Load-carrying capacity at 45-60° tilt angle (kg)	Usable length (m)	
				1	2
2 threads	6	2100	1500	77208... Ident. No.	77208... Ident. No.
2 threads	8	3500	2500	624 ○	636 ○
2 threads	10	5600	4000	626 ○	638 ○
2 threads	10	5600	4000	628 ○	640 ○

Prod. Gr. 775

RUD® VIP attachment chains (EN standard 818-2)

Stop chain design	Chain Ø (mm)	Load-carrying capacity at 0-45° tilt angle (kg)	Load-carrying capacity at 45-60° tilt angle (kg)	Usable length (m)	
				1	2
4 threads	6	3150	2250	77208... Ident. No.	77208... Ident. No.
4 threads	8	5250	3750	630 ○	642 ○
4 threads	10	8400	6000	632 ○	644 ○
4 threads	10	8400	6000	634 ○	646 ○

Prod. Gr. 775

Source: Hahn+Kolb Werkzeuge GmbH
Technical data subject to change.
Availability subject to country specific rules and regulations.

www.iconridge.com

Lifting strap with reinforced loops

Made from polyester

Application:

For the safe and regulatory-compliant lifting of loads.

Execution:

- Colour coded, with reinforced loops

Delivery:

Other lengths deliverable on request.

Notes:

Return or exchange of goods excluded for product liability reasons.

Technical data:

- Material: PES - Polyester



Single, wrapped around



Single, tied



Single, direct

Width (mm)			30	30	60	90
Material thickness (mm)			3.5	7	7	7
Load-bearing capacity (single direct) (kg)			500	1000	2000	3000
Load-bearing capacity (single u-shape) (kg)			1000	2000	4000	6000
Load-bearing capacity (single noosed) (kg)			400	800	1600	2400
Colour			Orange	Violet	Green	Yellow
	Length (mm)					
77188...	1000	Ident. No.	010 ●	110 ●	210 ●	310 ●
77188...	2000	Ident. No.	020 ●	120 ●	220 ●	320 ●
77188...	4000	Ident. No.	-	140 ●	240 ●	340 ●
77188...	6000	Ident. No.	-	160 ●	260 ●	360 ●

Prod. Gr. 775

Round sling with double shell (EN standard 1492-2)

Made from polyester

Application:

For the safe and regulatory-compliant lifting of loads.

Execution:

- Infinitely looped high-quality polyester fibre strands
- Protective coating made of seamless woven, impregnated polyester fabric
- Carrying capacity details and marking stripes woven in

Advantage:

- Wear-proof and dirt-resistant through special impregnation

Delivery:

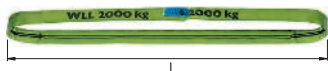
Other lengths deliverable on request.

Notes:

Return or exchange of goods excluded for product liability reasons.

Technical data:

- Material: PES - Polyester





Single, direct



Single, wrapped around



Single, tied

			1000	2000	3000	4000	5000	6000	8000
			2000	4000	6000	8000	10000	12000	16000
			800	1600	2400	3200	4000	4800	6400
Colour			Purple	Green	Yellow	Grey	Red	Brown	Blue
	Nutzlänge (L) (mm)								
77200...	500	Ident. No.	610 ●	620 ●	-	-	-	-	-
77200...	1000	Ident. No.	710 ●	720 ●	730 ●	736 ●	740 ●	750 ●	756 ●
77200...	1500	Ident. No.	715 ●	725 ●	735 ●	737 ●	745 ●	755 ●	757 ●
77200...	2000	Ident. No.	910 ●	920 ●	930 ●	936 ●	940 ●	950 ●	956 ●
77200...	3000	Ident. No.	915 ●	925 ●	935 ●	937 ●	945 ●	955 ●	957 ●

WLL kg			1000	2000	3000	4000	5000	6000	8000
WLL kg			2000	4000	6000	8000	10000	12000	16000
WLL kg			800	1600	2400	3200	4000	4800	6400
Colour			Purple	Green	Yellow	Grey	Red	Brown	Blue
	Nutzlänge (L) (mm)								
77200...	4000	Ident. No.	965	970	975	980	985	990	995

Prod. Gr. 775

SpanSet® SupraPlus round sling with extremely robust hose cover (EN standard 1492-2)

Made from polyester

Application:

For the safe and regulatory-compliant lifting of loads, for daily use and extreme usage conditions.

Execution:

- Textile wire-reinforced hose sleeve
- Ribbed reinforcement of hose sleeve made of high-performance polyester
- Embossed weaving in of carrying capacity

Advantage:

- Compact, long service life thanks to low wrinkle formation and small support area
- Significantly higher usage time: double the resistance to wear and multiple resistance to cuts thanks to ribbed reinforcement

- Special hose sleeve prevents almost all damage or tearing
- Increased working safety thanks to embossed weaving in of carrying capacity

Delivery:

Other lengths deliverable on request.

Notes:

Return or exchange of goods excluded for product liability reasons.

Technical data:

- Material: PES - Polyester



Material thickness (mm)			6	8	10	12	13	14	17
WLL kg			1000	2000	3000	4000	5000	6000	8000
Colour			Purple	Green	Yellow	Grey	Red	Brown	Blue
	Nutzlänge (L) (mm)								
77201...	1000	Ident. No.	021	022	023	024	025	026	-
77201...	1500	Ident. No.	131	132	133	134	135	136	138
77201...	2000	Ident. No.	241	242	243	244	245	246	248
77201...	3000	Ident. No.	361	362	363	364	365	366	368
77201...	4000	Ident. No.	481	482	483	484	485	486	488

Prod. Gr. 775

Round sling pack at special price

Comprising 10 round slings

Application:

For lifting various loads.

Execution:

- From high-strength brands of polyester (PES) according to EN 1492-2
- Colour-coded according to EN standard
- With double, seamless protective sleeve
- Carrying capacity printed on each sling
- Carrying capacity strips woven in

- 2 x 1000 kg, useful length L1 = 1 m
- 2 x 1000 kg, useful length L1 = 2 m
- 2 x 2000 kg, useful length L1 = 2 m
- 2 x 2000 kg, useful length L1 = 3 m
- 2 x 3000 kg, useful length L1 = 3 m

Advantage:

- Cost-effective set
- Always have the right round sling to hand



77200... Ident. No. 600

Prod. Gr. 786

Joker safety load hook

For round slings and lifting straps

Application:

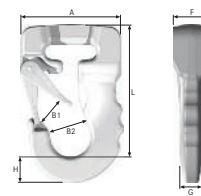
for connecting two slings or as the end sling point hook.

Execution:

- forged steel
- with a safety catch
- colour corresponds to CEN colour coding for textile slings
- hook opening designed to fit the usual sling points

Advantage:

- simple to use thanks to design and colour
- no risk of confusion
- particularly robust
- protects fabric lifting gear



Ident. No. 011, 031-061

Lifting equipment \ Round slings

Load-carrying capacity (kg)	Colour	Outer width (A) (mm)	Öffnungsweite (B ₁) (mm)	Innenbreite (B ₂) (mm)	Dimension F (mm)	Dimension G (mm)	Dimension H (mm)	Dimension L (mm)	77203... Ident. No.	
1000	Purple	78	26	31	16	17	20	123	011	●
2000	Green	91	31	40	17	21	26	148	021	●
3000	Yellow	113	37	50	25	25	32	175	031	●
4000	Grey	133	43	59.5	36	36	40	223	041	●
5000	Red	133	43	59.5	36	36	40	223	051	●
6000	Brown	133	43	59.5	36	36	40	223	061	●

Prod. Gr. 775

Lashing strap with clamping locks, 250 daN in strapping

Application:

For lashing transported goods, suitable for securing lightweight loads.

Execution:

- Made of 100% polyester, 1 piece

Advantage:

- For the secure lashing of loads

Delivery:

Other lengths upon request.

Technical data:

- Width: 25 mm
- Permitted tensile force LC in the strapping: 250 daN
- Material: PES - Polyester



Length (mm)		3000	5000
77206...	Ident. No.	010	020
		●	●

Prod. Gr. 775

Ratchet strap, 500 daN in strapping

Application:

For lashing transported goods, suitable for securing lightweight loads.

Execution:

- Made of 100% polyester, with mini-ratchet, 1 piece

Advantage:

- For the secure lashing of loads

Notes:

Other lengths upon request.

Technical data:

- Restraint assembly design: One part, without hook
- Width: 25 mm
- Permitted tensile force LC in the strapping: 500 daN



Length (mm)		5000
77206...	Ident. No.	100
		●

Prod. Gr. 775

Ratchet strap, 2000 daN in strapping

Application:

For lashing transported goods, suitable for vans and lightweight trailers.

Execution:

- Made of 100% polyester

Advantage:

- Regulation-compliant and secure loading of transported goods

Notes:

Other designs and lengths upon request.

Technical data:

- Width: 35 mm
- Permissible LC tensile force when pulled directly: 1000 daN
- Permitted tensile force LC in the strapping: 2000 daN



Restraint assembly design		One part, without hook	Two parts, with claw hook
Pre-tensioning force STF (daN)		-	220
Length (mm)			
77206...	6000	Ident. No. 200	210
		●	●

Prod. Gr. 775

Ratchet strap, 5000 daN in strapping

Claw hook

Application:

For lashing transported goods, suitable for lorry freight and transporting heavy loads.

Execution:

- Made of 100% polyester, 2 pieces

Advantage:

- Regulation-compliant and secure loading of transported goods

Notes:

Other designs and lengths upon request.

Technical data:

- Restraint assembly design: Two parts, with claw hook
- Width: 50 mm
- Pre-tensioning force STF: 300 daN
- Permissible LC tensile force when pulled directly: 2500 daN
- Permitted tensile force LC in the strapping: 5000 daN



Model with claw hook



	Length (mm)		
77206...	8000	Ident. No.	300
77206...	10000	Ident. No.	400

Prod. Gr. 775

Ratchet tool lashing strap with long-lever lashing ratchet tool, 5000 daN in the strapping

Claw hook

Application:

For lashing down with high pre-tension force, suitable for lorry freight and transporting heavy goods.

Execution:

- Made of 100% polyester, 2 pieces
- Lever 350 mm, 20 teeth

Advantage:

- Long lever and optimum transmission
- Easy to use—high pre-tension force
- Suitable for use as a pull or push ratchet
- Can be converted in just a few simple steps

Notes:

Other designs and lengths upon request.

Technical data:

- Restraint assembly design: Two parts, with claw hook and long lever
- Width: 50 mm
- Pre-tensioning force STF: 500 daN
- Permissible LC tensile force when pulled directly: 2500 daN
- Permitted tensile force LC in the strapping: 5000 daN



Model with claw hook



	Length (mm)		
77206...	8000	Ident. No.	500
77206...	10000	Ident. No.	600

Prod. Gr. 775