



Jamboard, the newest member of G Suite, is a collaborative digital whiteboard that allows teams to create and capture ideas in real time. Jamboard's hero hardware and complementary mobile apps allow for on-the-fly sharing of ideas, inspirations, sketches, and digital files directly on Jamboard or through a remote team member's phone or tablet.



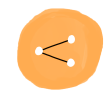
Real-time sharing meets remote collaboration

Multiple participants in different locations can share and build upon ideas at the same time—just like in Google Docs.



Turn your tablet or phone into a Jamboard

You don't need a Jamboard to participate. You can view and chime in from anywhere on your preferred web-enabled device, or even present to stakeholders who don't have a Jamboard.



Share more for better brainstorm

Team members can instantly share sketches, videos and photos from the web, and any files from Drive to bring ideas to life. Plus you can see remote teammates while you work—video and whiteboarding can happen at the same time.



Yes, it's saved

No more hoping your DO NOT ERASE note does the trick—your team's work is automatically saved to your Drive, and anyone can pick it up and keep jamming. Plus there's no need to take photos of the whiteboard at the the end of meetings—just email it.



If you can use a whiteboard, you can use a Jamboard

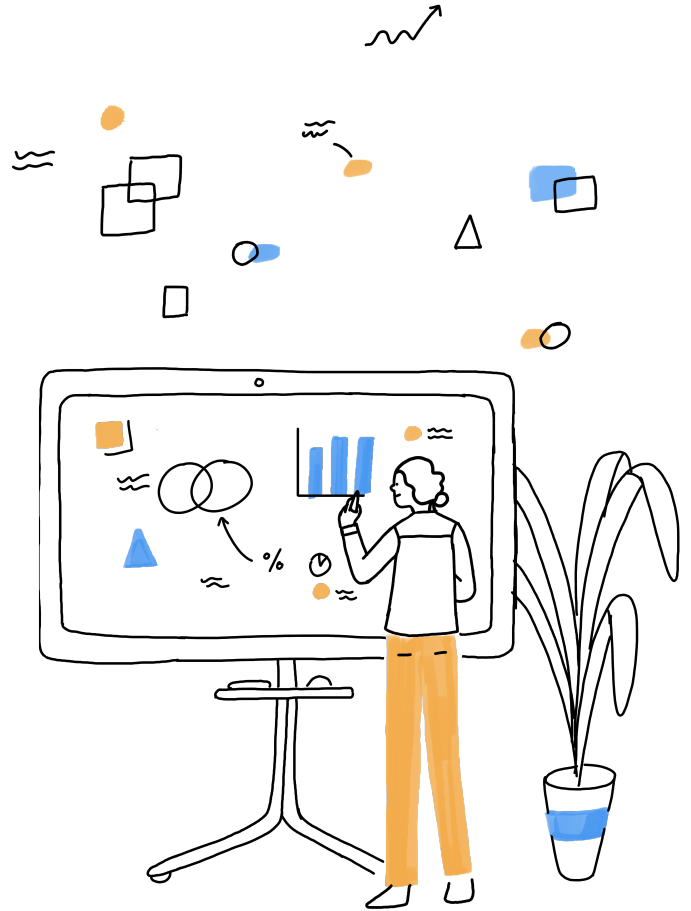
It's that intuitive. Just pick up the stylus and start jamming. Set up is easy, too—the only cable is for the power source so plug it in and you're off.



Touch interface makes jamming easy

Write, move, and resize with the tips of your fingers, just like on your smartphone or tablet. Or use the passive stylus and erasers which never need batteries, recharging, or bluetooth pairing.

Jamboard is a collaborative, digital whiteboard designed to help today's dynamic teams ability to work together in real-time from anywhere.



- 55" 4K UHD display
- 120 Hz touch scan rate
- 60 Hz video refresh rate
- HDMI 2.0, USB Type C, 2 X USB 3.0
- SPDIF audio out
- WIFI 802.11ac 2x2, NFC
- 1 Gigabyte Ethernet
- 16:9 Aspect ratio
- AC100 - 240V.50 - 60Hz Power supply
- Google Cast
- Built-in tilt support
- Built-in wide angle camera
- Down firing speakers
- Built-in microphones
- 16 simultaneous touch points
- Handwriting and shape recognition
- 2 x Fine tip passive stylus
- Eraser and microfiber cloth
- Wall mount or rolling stand option

	Width in inches (mm)	Depth in inches (mm)	Height in inches (mm)	Weight in lbs (kg)
Wall mounted screen (incl tray)	53.2 in (1,352 mm)	8.0 in (203 mm)	38.5 in (978.7 mm)	109.6 lb (49.7 kg)
Stand mounted screen (incl tray) + base	53.2 in (1,352 mm)	38.0 in (964 mm)	71.6 in (1,817.4 mm)	159.4 lb (72.3 kg)
Screen	53.2 in (1,352 mm)	3.4 in (87 mm)	32.4 in (823 mm)	94.1 lb (42.7 kg)
Rolling stand	52.4 in (1,332 mm)	37.9 in (963.8 mm)	56.0 in (1,422.1 mm)	65.3 lb (29.6 kg)
Wall mount	36.3 in (923 mm)	8.0 in (203 mm)	26.9 in (682 mm)	15.4 lb (6.97 kg)