

2017 EDITION, BRIDGER STEEL COLORS ARE SUBJECT TO CHANGE

# 2017 COLOR PAIRING EXAMPLES

EXAMPLES OF HOMES, BUSINESSES AND OTHER BUILDINGS

 **BRIDGERSTEEL**  
CREATE LASTING BEAUTY

[BRIDGERSTEEL.COM/METAL-COLORS](http://BRIDGERSTEEL.COM/METAL-COLORS) 1.877.STEEL.MT



## Table of Contents

---

Combining colors and finishes to create the perfect pairing of products, paint schemes and overall appearance can be a challenge for the most experienced designers. Using some of our popular projects, Bridger Steel has put together a collection of builds that incorporate different design elements, color palettes, and use of materials to create visually appealing designs that can help tackle challenges for our customers.

[Painted Metals](#)  
[Natural Metals](#)  
[Weathering Steel](#)  
[Prints and Textures](#)  
[Contact Us](#)



## 2017 Summer Color Combinations

---

As summer returns, building season begins. The flowers are blooming, the grass is green, and everywhere you look landscapes are lush and new. When looking at a building site, it can be easy to relate your location to this lively and vibrant feeling of new growth. While your design should take into account its environment, landscape and surroundings, be sure to think about how your colors, finishes and materials will work with all seasons, especially those of late summer and winter.

In a location that receives ample amounts of snow in the winter, choosing materials, finishes and colors that accentuate warmer natural colors to your build can contrast the white landscape of winter months.

Looking at your landscape, and choosing the right combination will leave you with a design that shines in any weather or season.

So far in 2017, we've seen a continued trend towards natural finishes and gray tones, paired with brighter wood finishes, cool concrete, or lighter natural stones. Natural finishes like Vintage, Galvanized, Galvalume, A606 Truten Weathering Steel and Bonderized continue to be popular options, while dark tones like Burnished Slate, Dark Gray, and Weathered Copper are also being used a lot in roofing applications. The added dimension of texture has grown significantly in recent months, with Rustic Rawhide and Steel Gray Rawhide among the more popular options.

As builds become increasingly energy efficient we are also seeing a trend towards Cool Roof systems. These lighter colors help reflect the sun rays and offer reduced energy costs in controlling internal building temperatures. What started as a trend to reduce heat islands in metropolitan regions, is now becoming popular in everything from tiny homes to homes and off-grid cabins. Some of our colors, like White or Ivory offer excellent SRI, TSR and E ratings to achieve this type of system.

We hope our Color Combination Guide helps you identify new ideas for your upcoming project. If you have any questions, or would like more information about the products, builders or designers of these projects, please contact [marketing@bridgersteel.com](mailto:marketing@bridgersteel.com)

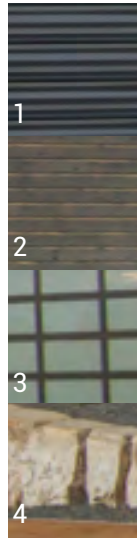


## Painted Metal

---

Bridger Steel offers a wide range of painted metal colors to complement any project. Whether you are looking for a bold contrast or to blend in with your landscape or environment, painted metal can offer design solutions for any style of build. Dark gray and black tones are popular for modern spaces, while natural tones are a classic choice for residential exteriors. All of our painted metal colors come with a warranty, so you know your roofing, siding, or accent will keep its shine for years to come.



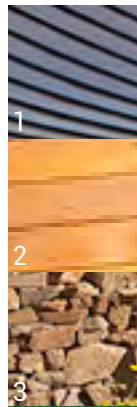


## Yellowstone Modern Home

Design/Build: Newman Built Quality Homes

This home uses dark gray siding and dark wood accents to create a sleek, modern look. The richness of the dark wood contrasts the cold metal creating an industrial and inviting entryway. With the combination of metal and wood, this home is a great example of how two very different materials can work together for a seamless look.

1. Dark Gray Siding
2. Dark Wood Siding
3. Frosted Glass
4. Natural Stone

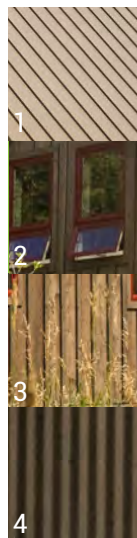


## Mountain Ski Retreat

Architect: Brad Hoyt, CTA Jackson  
Build: Stewart Construction  
Photos: Karl Neumann Photography

Using nature for inspiration, this home uses a standing seam roof with natural stones and warm wood siding for a truly unique exterior in the Wyoming hills. The light and dark tones of the stones compliment the roof perfectly, all while contrasting the warm tones of the wood siding.

1. Dark Brown Roofing
2. Wood Siding
3. Natural Stone Wainscot



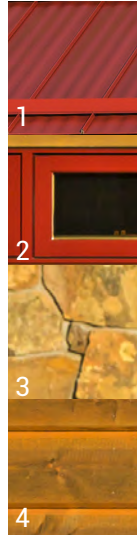
## Rustic River Cabin

Design/Build: Penny Lane Builders

This cabin uses a standing seam roof, rustic wood siding, and bright window accents to create a beautiful getaway along the Gallatin River. Running the roofing and siding vertically helps create long, clean lines. The red accents on the windows contrast the rich tones of the dark wood and weathered copper roofing for added rustic charm.

1. Weathered Copper Roof
2. Red Window Frames
3. Dark Wood Siding
4. Galvanized Siding Accent





## Southwestern Courtyard

Design: Seabury Design Associates  
Build: Jeff Aldsworth  
Photos: Karl Neumann Photography

Painted metal can be the perfect accent for exteriors. This home combines a red accent roof with brown tones to create a warm and inviting exterior. The red roof and window accents break up the natural tones of the wood and shingles for a unique and bold design.

1. Colonial Red Roofing
2. Red Window Frames
3. Natural Stone Wall
4. Wood Siding

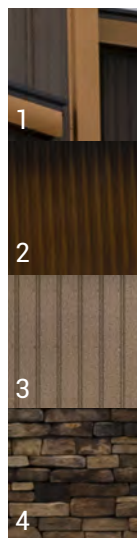


## Contemporary School

Design: Comma-Q Architecture  
Build: Martel Construction

This building uses a combination of flush wall panels, corrugated accents, and natural stones for sleek and modern design. The contrast of light and dark material throughout the building help accentuate its many angles and clean lines. With bold timber frames and red brick, the entryway is an inviting, focal point.

1. Light Gray Siding
2. Red Brick Accent Wall
3. Tan Brick Wall
4. Pre-Weathered Galvalume Siding



## Rustic Dakota Barn

Build: Timberline Builders

For an authentic rustic look, this barn uses copper penny along with rich, brown tones and weathering steel. With a bright finish, the copper penny offsets the dark brown roof and weathering steel wainscot. Over time, the weathering steel wainscot will continue to age adding to the rustic design of this barn.

1. Copper Penny Trim
2. A606 Truten Weathering Steel Wainscot
3. Desert Brown Siding
4. Natural Stone Wainscot



## Natural Metals

---

A popular choice for both residential and commercial spaces, natural metal finishes help create visual interest and balance by adding color and texture to a design. Galvanized and Bonderized finishes are often described as having a natural, real quality that offer an authentic feel to buildings design. Whether paired with bright colors, other natural building materials, or similar dark or gray tones, natural finishes have become a popular trend for all design styles.

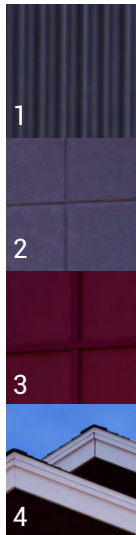


## Modern Rustic Office Space

Design: JDS Architects  
Build: Miller Construction

This commercial space uses the aged metallic look of Vintage with tan bricks to create a one of a kind exterior. The Vintage finish adds texture and warmth to compliment the lighter tones of the stone perfectly. With black trim accents, this space is a great combination of natural light and dark colors.

- 1. Vintage Siding
- 2. Tan Stone Wall
- 3. Black Trim Details
- 4. Warm Wood Accents

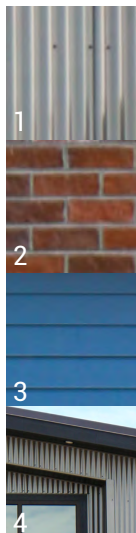


## Lively Recreational Space

Design: Bechtle Architects  
Build: Langlas & Associates  
Photos: Karl Neumann Photography

This activity center uses corrugated metal and colorful accents for an inviting and eye catching exterior. The clean lines and bold colors add to this commercial spaces' modern exterior. The natural grey tones and bright white trim contrast the red accent for a unique design.

- 1. Bonderized Siding
- 2. Gray Concrete Wall
- 3. Red Accent Wall
- 4. White Trim

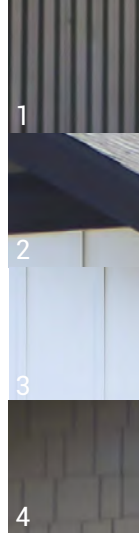


## Industrial Commercial Offices

Design: Dzyn2 Architects  
Build: Alpenglow homes

This commercial office space uses a mixture of brick, metal and a bold color for an eye catching exterior. As this galvanized steel ages, it will natural rust to compliment the red tones of the brick perfectly. With the combination of exposed bricks and steel, this design is a great example of how to create a modern, industrial office space.

- 1. Galvanized Siding
- 2. Brick Siding
- 3. Blue Siding
- 4. Black Trim



## Contemporary Craftsman Home

Design: Bechtle Architects  
Build: Langlas & Associates  
Photos: Karl Neumann Photography

This home is a great example of how to mix light and dark colors for a contemporary home exterior. The Vintage metal wainscot in the entry maintains the balance between the contrasting colors with its metallic finish. The combination of dark siding and trim with bright white accents create beautiful and eye-catching curb appeal.

1. Vintage Wainscot
2. Black Trim
3. White Accent Trim
4. Brown Siding

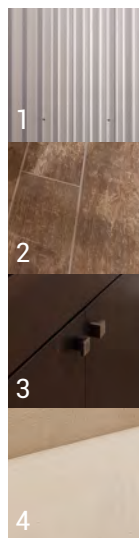


## Main Street Modern Hotel

Design: Think Tank Design Group  
Build: North Builders  
Photos: Dan Armstrong Photography

This commercial building combines Ultra Batten siding with light wood and bold accents for a unique modern design. With a matte grey finish, the Bonderized metal allows the bright green doors and accents to really pop. The horizontally run panels and wood planks create long, clean lines adding to the sleek design of this exterior.

1. Bonderized Siding
2. Galvanized Decking
3. Wood Accents
4. Bright Green Accents



## Rustic Contemporary Interior

Design/Build: Mountain Woodwork, Inc.  
Photos: Kevin Malon

Instead of the traditional tile, this interior space used a corrugated metal for a unique accent. With no natural light, the galvalume finish on the shower wall works with the lighting to create a brighter and more open space. The dark wood on the vanity and light walls and floors create the perfect contrast to this small space.

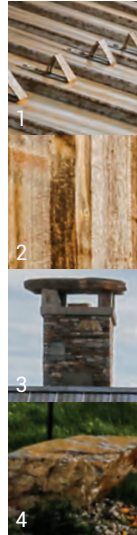
1. Galvalume Shower Wall
2. Wood Floors
3. Dark Wood Cabinets
4. Stone Countertops



## Weathering Steel

---

As one of our most popular finishes, Bridger Steel's Weathering Steel or A606 Truten, has often been used as the perfect finish to a rustic design. With a recent trend of use in contemporary and mountain modern projects, the warm tones of the rusted metal create the perfect balance between natural materials such as stones and distressed wood. Often used as an accent roof, Weathering Steel is a beautiful statement next to dark roof colors or as low sloping corrugated profiles. Weathered roofs, siding, and accents are instantly noticeable adding character to any project.



## Black Hills Basecamp

Design/Build: Shannon Schad Design and Construction  
Photos: Glen Hand Photography

This home uses a combination of Tru Snap roofing, rustic wood siding and custom flat panel siding to create a unique look in the Black Hills of South Dakota. The eventual darker color of the weathering steel will contrast well with the wood tones. While the material rusts, the look provides a warm, unified color scheme across the sightlines of the home.

1. A606 Truten Weathering Steel Roofing
2. Treated Oak Siding
3. Black Hills Local Stone- Gold Creek
4. Natural Stone Landscaping



## Big Sky Outdoor Patio

Design: Teton Heritage Builders,  
Build: CTA Group  
Photos: Karl Neumann Photography

This outdoor living space mixes cool colors with natural elements to create a cozy outdoor living space. With a natural color scheme, this space uses its surrounding to blending into its environment perfectly. The weathering steel on this fireplace will continue to age creating a focal point that will last a lifetime.

1. A606 Truten Weathering Steel Fireplace
2. Natural Stone Accents
3. Timber Frames
4. Gray Distressed Wood Siding



## Mining Camp Residence

Design/Build: Shannon Schad Design and Construction  
Photos: Jessica Deering Photography

With a dark color scheme, this home blends perfectly with the mountain landscape around it. Combined with natural stone and distressed wood, the weathered steel roofing and accent siding creates the perfect rustic home. Over-time this roofing and siding will continue to rust adding to the wood and stones natural beauty.

1. A606 Truten Weathering Steel Roofing
2. Natural Stone Wainscot
3. Distressed Wood Siding
4. Natural Landscaping





## Mountain Rustic Home

Design: Locati Architects  
Build: SBC Construction  
Photos: Karl Neumann Photography

This home uses a combination of corrugated roofing, natural stones, and bold timber frames to create a one of a kind rustic design. The natural tones throughout the home's exterior contrast the surrounding environment making this home a statement along the hillside.

1. A606 Truten Weathering Steel Roofing
2. Natural Stone Accents
3. Wood Siding
4. Natural Landscaping

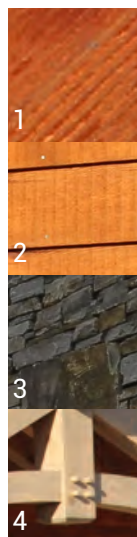


## Weathered Office Space

Build: Dick Anderson Construction

Looking to make a statement, this commercial space combines weathering steel siding with corrugated roofing and siding accents. This weathering steel began with a dark grey appearance and as it has been exposed to natural elements, transformed into this beautifully aged siding. The aged metal contrasts the bonderized roofing to create a modern rustic design.

1. A606 Truten Weathering Steel Siding
2. Natural Stone Accents
3. Bonderized Roofing
4. Bonderized Wainscot



## Old Western Accents

Build: Great Country Timber Frames

This office space uses corrugated metal wainscoting, rustic reclaimed barn wood siding, and natural stone columns to take it back in time. The unique colors of the weathered steel accents compliment the rich tones of the rustic wood siding and while contrasting the light hues of the timber frames.

1. A606 Truten Weathering Steel Wainscot and Roofing
2. Reclaimed Barn Wood Siding
3. Natural Stone Accents
4. Timber Frames



## Prints and Textures

---

With Bridger Steel's prints and textures, designers and homeowners are finding new and creative ways to use patterns on metal roofing, siding, and interior projects. Our Rawhide Textures make a statement by adding subtle texture and dimension for unique wainscots, accent walls, and roofing applications. Printed patterns often emulate naturally occurring colors in aged steel, aged copper, or even in natural occurring scenarios like lichen growth on a dark roof of siding. Prints and textures are a great way to make a statement on your next project.

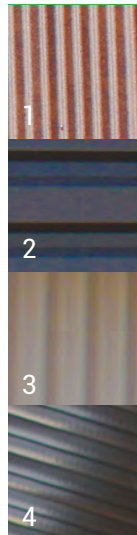


## Modern Farm House

Design/Build: Built By Owner

This home uses corrugated roofing and siding to add dimension and texture to this one of a kind farmhouse. Alongside the white siding and steel grey roofing the weathered zinc is the perfect choice for this black and white color scheme. The red window accents add just enough contrast to go with the classic color combination.

1. Weathered Zinc Siding
2. Steel Gray Roofing
3. Red Window Frames
4. White Siding

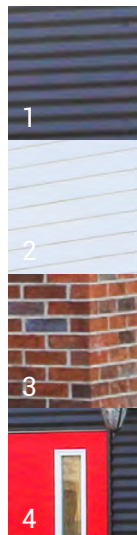


## Contemporary Building

Build: Cornerstone Development

With different colors and textures, this commercial space uses corrugated and structural metal siding for a bold and modern exterior. Color blocking with dark grey and off white colors and a rustic rawhide texture breaks up the buildings sight lines to help define each space. Running the contrasting color panels vertically and horizontally also adds to the buildings unique design.

1. Rustic Rawhide Siding
2. Slate Gray Siding
3. Stone Siding
4. Dark Gray Fencing



## Gallatin Valley Office Space

Build: Mazzella Construction

With different colors and textures, this commercial space uses corrugated and structural metal siding for a bold and modern exterior. Color blocking with dark grey and off white colors and a rustic rawhide texture breaks up the buildings sight lines to help define each space. Running the contrasting color panels vertically and horizontally also adds to the buildings unique design.

1. Ash Gray Rawhide Siding
2. White Siding
3. Red Brick Wall
4. Red Accent Door

## Contact Us

---

If you are looking for even more examples of how to use metal in your build, visit our Project Inspiration page where you will find rustic and modern designs for residential, commercial, and agricultural applications.

We are always excited to find new and creative ways our products are incorporated into designs. To showcase your project in our 2017 Winter Color Combination guide contact [marketing@bridgersteel.com](mailto:marketing@bridgersteel.com). Bridger Steel respects the privacy of our customers and will not release addresses or information of properties pictured. If you are interested in viewing our products in person, please visit a showroom or request a sample.

If you have any questions, or would like more information about the products, builders or designers of these projects please contact [marketing@bridgersteel.com](mailto:marketing@bridgersteel.com) or call 1.877.STEEL.MT.

Due to printing variations and display setting, Bridger Steel recommends always obtaining a physical sample of desired color prior to order materials.





---

2017 EDITION, BRIDGER STEEL COLORS ARE SUBJECT TO CHANGE

3206 CONRAD ROAD  
BILLINGS MT USA 59102  
TOLL FREE: 1.877.STEEL.MT  
WWW.BRIDGERSTEEL.COM

Due to printing variations and display settings, Bridger Steel recommends always obtaining a physical sample of a desired color prior to ordering materials.