

Enlarged Clip Assembly



**1. Steel Purlin:** Panel can be installed over open framing, with/without insulation (blanket or rigid). Max span width of 60".

<b>Roof Coverage</b>	18" or 24"
<b>Panel Gauges</b>	22*, 24*
<b>Fastener Options</b>	Concealed Clip System
<b>Clip Height</b>	3.375" or 4.375"
<b>Panel Length</b>	3' to 43' Shop Production 3' to 100' Run Onsite
<b>Rib Height</b>	3"
<b>Roof Slope</b>	Minimum 0.25:12 with Factory Applied Sealant
<b>Wind Uplift Rating</b>	ASTM E1592
<b>Air Infiltration</b>	ASTM E1680-16
<b>Water Infiltration</b>	ASTM E1646-95
<b>Impact Resistance</b>	UL 2218 Class 4

\* Grade 50

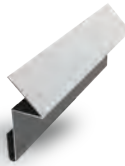
Version 5.1, 4/2021



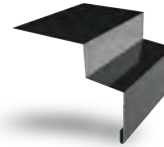
Vented/Non-Vented Ridge Cap



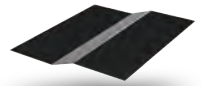
W Valley



Rake Slide



Offset Eave Trim



Offset Cleat



Vented Ridge Air Dam



1/4":12 to 1 3/4" Slope Top Cap



2:12 to 4:12 Top Cap



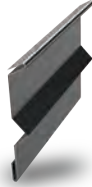
Gable



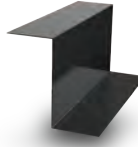
Exposed Fastener Gable



Sculpted Eave



Reglet Flashing



Z Metal



Gutter Eave Trim



Counter Flashing



Sculpted Top Cap



Sculpted Rake Trim



Sculpted Gable Trim  
(Exposed Fastener)



Sculpted Gutter



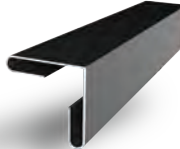
Sculpted Eave Trim



Closed Face Down Spout



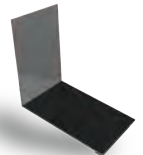
Open Face Down Spout



Gutter Strap



Gutter



Endwall



Sidewall



Sidewall - Stepped  
(Exposed Fastener)

**Additional Trim Profiles Available By Request**

