

**Panel Overlap Detail**

- 1. Underlayment:** Semi-Permeable Vapor Barrier.
- 2. Substrate:** Plywood substrate material shown. Can be installed over open framing.

<b>Wall Coverage</b>	36"
<b>B Deck Coverage</b>	36"
<b>Panel Gauges</b>	22*, 24* 20 Ga. Galvanized Only
<b>Fastener Options</b>	Exposed
<b>Panel Length</b>	3' to 50'
<b>Rib Height</b>	1.5" at 6" Centers
<b>Roof Slope</b>	Not Available
<b>Impact Rating</b>	UL 2218
<b>Wind Uplift Rating</b>	ASTM E1592
<b>Warranty</b>	Based on Paint System
<b>For more information</b>	1.877.783.3568

\* Grade 50

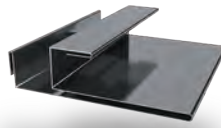
Version 3.2, 4/2018



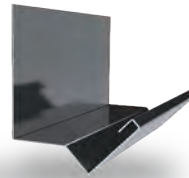
J Trim



Double J Trim



F & J Trim



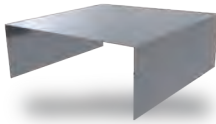
Head Trim



Outside Corner



Inside Corner



Door Cap



Base Drip



Double Base Drip



Broom Base



Wainscot

**Additional Trim Profiles Available By Request**

