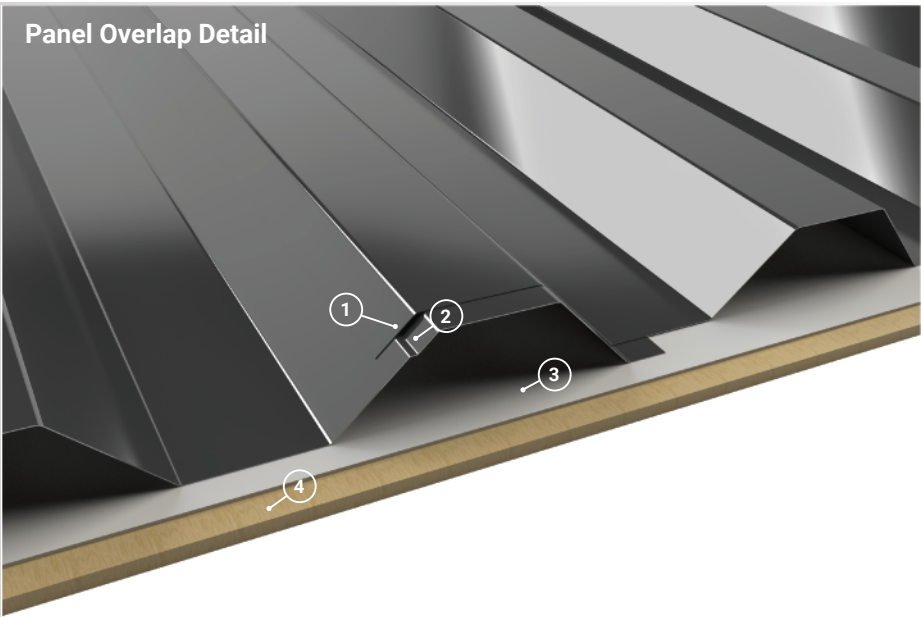


Panel Overlap Detail



- 1. Five Degree Overbend:** Ensures tight overlap between panels.
- 2. Anti-Siphon Groove:** In order to help prevent water from penetrating the overlap, the anti-siphon groove creates an internal air gap at the panel overlap.
- 3. Underlayment:** High Temp Ice & Water shown. For use at eaves and valleys.
- 4. Substrate:** Plywood substrate material shown. Can be installed over open framing with a max span of 60".

Roof Coverage36"

Wall Coverage36"

Panel Gauges22*, 24*

Fastener OptionsExposed

Panel Length3' to 43'+
Longer lengths available. Contact a Product Specialist.

Rib Height1.5" at 7.2" Centers

Roof SlopeMinimum 1:12 or Greater with Mastic

Impact RatingUL 2218

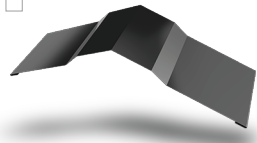
Wind Uplift RatingASTM E1592

WarrantyBased on Paint System

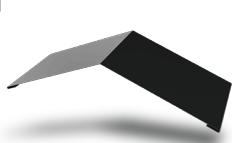
For more information1.833.STEEL.US

* Grade 50

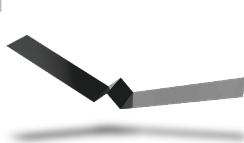
Version 5.1, 4/2021



Vented/Non-Vented Ridge Cap



Hip Ridge



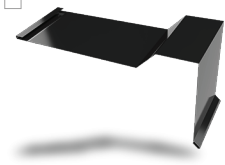
W Valley



Transition -High to Low



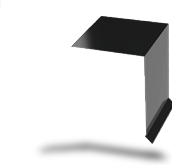
Transition - Low to High



Open Prow Gable



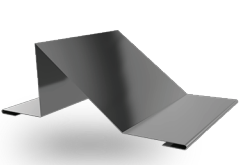
Closed Prow Gable



4" Mini Gable



6" Gable



Snowbreak



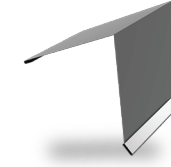
4" Eave



6" Eave



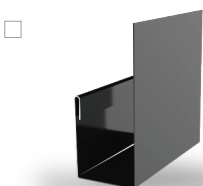
Style D Eave - 2" & 4"



4" Mini Top Cap



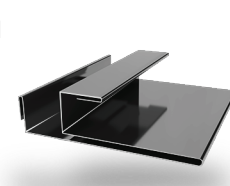
6" Top Cap



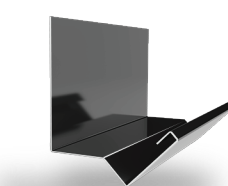
J Trim



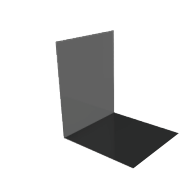
Double J Trim*



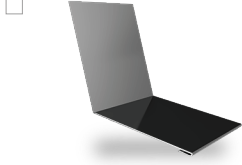
F & J Trim



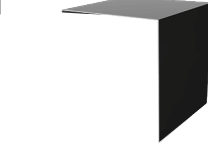
Head Trim



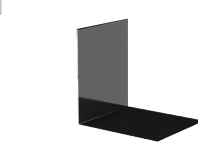
Side Wall



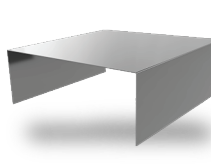
End Wall



Outside Corner



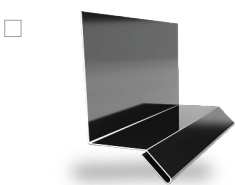
Inside Corner



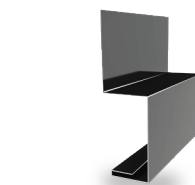
Door Cap



Double Base Drip*



Base Drip



Broom Base



Wainscot



Fascia

**Additional Trim
Profiles Available
By Request**

* Color On Both Sides

