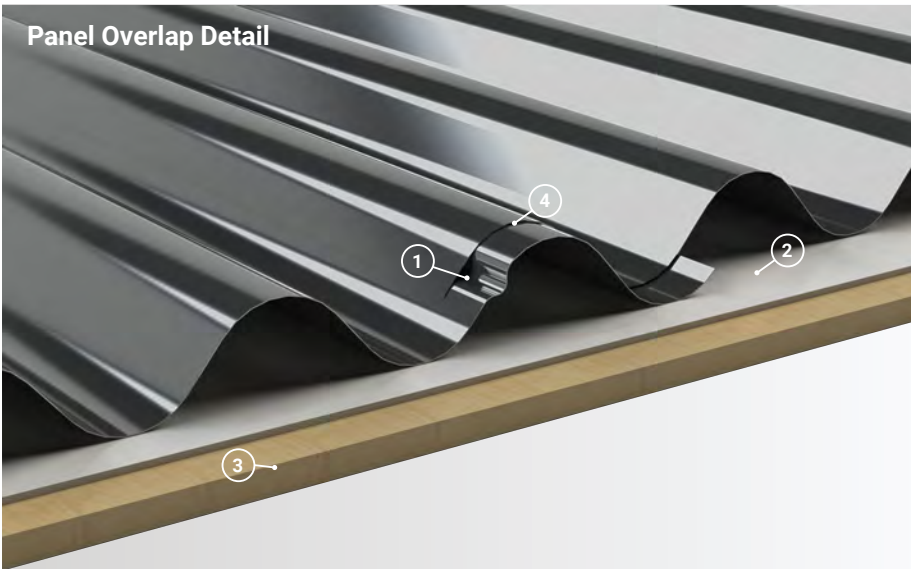


Panel Overlap Detail

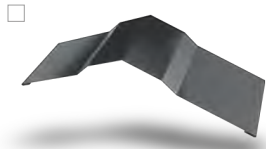


1. **Anti-Siphon Groove:** In order to help prevent water from penetrating the overlap, the anti-siphon groove creates an internal air gap at the panel overlap.
2. **Underlayment:** High Temp Ice & Water shown. For use at eaves and valleys.
3. **Substrate:** Plywood substrate material shown. Can be used over open framing
4. **Overlap:** Single Overlap with Anti-Siphon Shown.

Roof Coverage	37"
Wall Coverage	37"
Panel Gauges	22*, 24* 20* Ga. Galvanized Only
Fastener Options	Exposed
Panel Length	3' to 50'
Rib Height	7/8" at 2.67" Centers
Roof Slope	Minimum 1:12 or Greater with Mastic
Impact Rating	UL 2218
Wind Uplift Rating	ASTM 1592, UL 580
Warranty	Based on Paint System
For more information	1.877.783.3568

* Grade 50

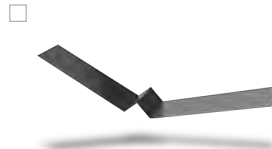
Version 3.2, 4/2018



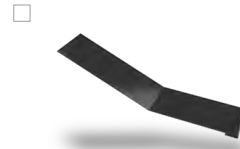
Vented/Non Vented Ridge Cap



Hip Ridge



W Valley



Transition - High to Low



Transition - Low to High



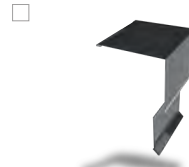
Open Prow Gable



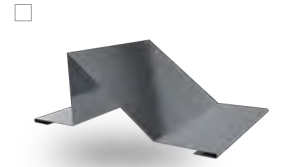
Closed Prow Gable



4" Mini Gable



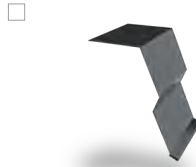
6" Gable



Snowbreak



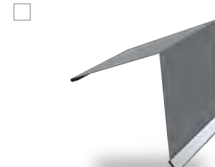
4" Eave



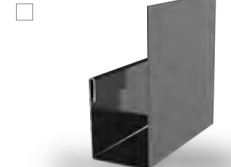
6" Eave



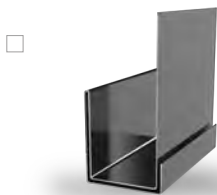
Style D Eave



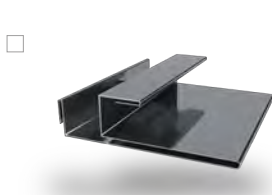
4" Mini Top Cap



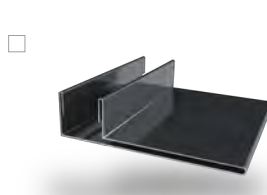
J Trim



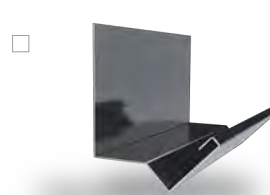
Double J Trim



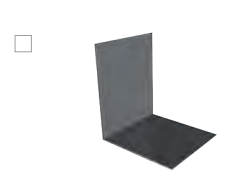
F & J Trim



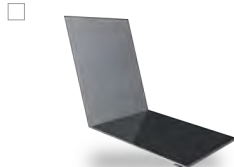
F Trim



Head Trim



Side Wall



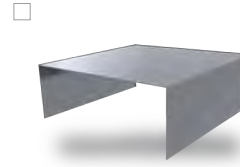
End Wall



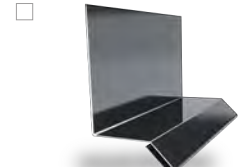
Outside Corner



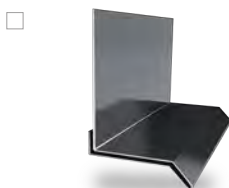
Inside Corner



Door Cap



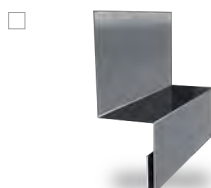
Base Drip



Double Base Drip



Broom Base



Wainscot



Fascia

Additional Trim Profiles Available By Request

