

- 1. 5 Degree Overbend:** Ensures tight overlap between panels.
- 2. Anti-Siphon Groove:** Creates an internal air gap at panel overlap to help prevent water intrusion.
- 3. Underlayment:** High Temp Ice & Water shown. For use at eaves and valleys.
- 4. Substrate:** Plywood substrate material shown

<b>Roof Coverage</b>	36"
<b>Wall Coverage</b>	36"
<b>Panel Gauges</b>	26*, 29*
<b>Fastener Options</b>	Exposed
<b>Panel Length</b>	3' to 40'+
<b>Rib Height</b>	3/4" at 9" Centers
<b>Roof Slope</b>	Minimum 3:12 or Greater with Mastic
<b>Impact Rating</b>	Not Available
<b>Wind Uplift Rating</b>	Not Available
<b>Warranty</b>	Based on Paint System
<b>For more information</b>	1.833.STEEL.US

\* Grade 80

Version 5.1, 4/2021



Ridge Cap - Vented or Non-Vented



Hip Ridge



W Valley



Transition - High to Low



Transition - Low to High



Open Prow Gable



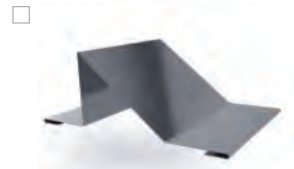
Closed Prow Gable



4" Mini Gable



6" Gable



Snowbreak



4" Eave



6" Eave



Style D Eave - 2" & 4"



4" Mini Top Cap



6" Top Cap



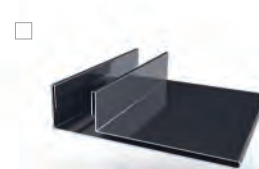
J Trim



Double J Trim\*



F & J Trim



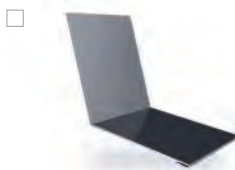
F Trim



Head Trim



Side Wall



End Wall



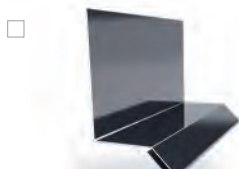
Outside Corner



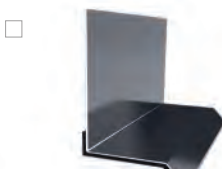
Inside Corner



Door Cap



Base Drip



Double Base Drip\*



Broom Base



Wainscot



Fascia

\* Color On Both Sides

