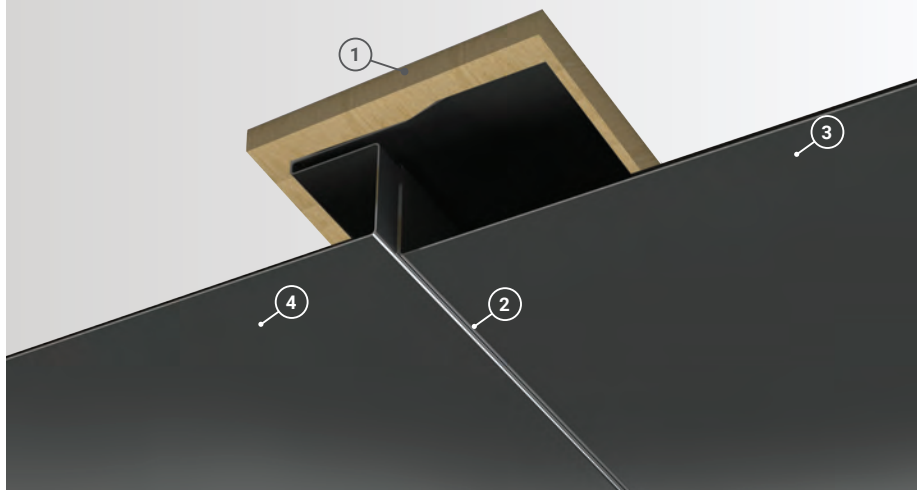


Custom Widths Available

**Panel Overlap Detail**

- 1. Soffit Substrate:** Can be installed to wood framing, metal framing or plywood sheathing
- 2. Reveal Width:** No reveal shown, can be manufactured with up to 1" of reveal between panels in 1/4" increments.
- 3. Perforations:** Available in perforated version with air flow data available
- 4. Stiffeners:** Available in single v, double v, or no stiffener options



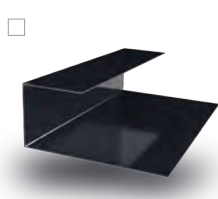
<b>Soffit Coverage</b>	12" or 16"
<b>Reveal Widths</b>	Flush to 1"
<b>Panel Gauges</b>	22, 24*
<b>Fastener Options</b>	Concealed Fastener
<b>Panel Length</b>	4' to 30'+
<b>Relief Height</b>	7/8"
<b>Variegated Assembly</b>	Available
<b>Air Flow Data</b>	Available Upon Request
<b>Perforations</b>	Available in 24 Gauge
<b>Warranty</b>	Based on Paint System
<b>For more information</b>	1.833.STEEL.US

\* Grade 50

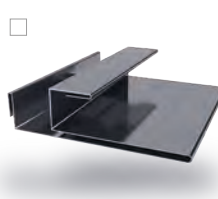
Version 5.1, 4/2021



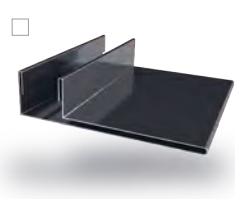
Double J Trim \*\*\*



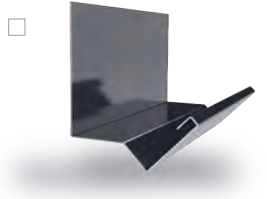
Reverse J Trim \*



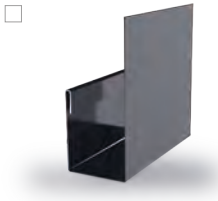
F & J Trim



F Trim



Head Trim



J Trim



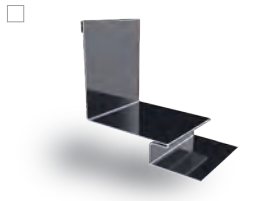
Outside Corner



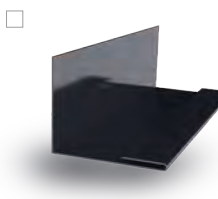
Outside Corner 2



Inside Corner



Inside Corner 2



Inside Corner Closure



Fascia



H Trim \*\*

**Additional Trim Profiles Available By Request**

\* Used with Outside & Inside Corner 2 and H Trim  
\*\* Used with Reverse J Trim  
\*\*\* Color On Both Sides

