

<b>Roof Coverage</b>	12"-17"
<b>Radius Panel</b>	Available
<b>Panel Gauges</b>	22*, 24*, 26
<b>Fastener Options</b>	Concealed Clip System
<b>Panel Length</b>	3' to 100'+
<b>Rib Height</b>	1", or 1.5"
<b>Roof Slope</b>	Minimum 1:12 or Greater with Mastic
<b>Impact Rating</b>	UL 2218
<b>Wind Uplift Rating</b>	ASTM E1592
<b>Warranty</b>	Based on Paint System
<b>For more information</b>	1.877.783.3568

\* Grade 50

Version 3.2, 4/2018



Vented/Non-Vented Ridge Cap



Hip Ridge



W Valley



Transition -High to Low



Transition - Low to High



Open Prow Gable



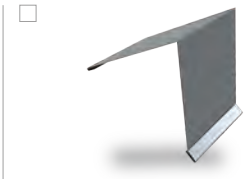
Mini Gable



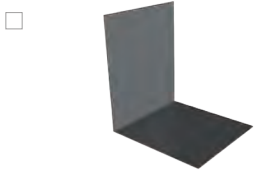
Eave



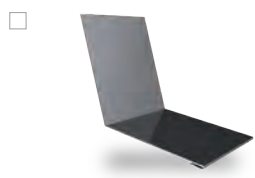
Style D Trim



Mini Top Cap



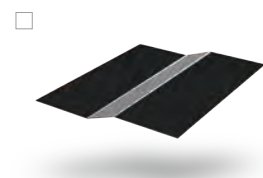
Sidewall



Endwall



Fascia



Offset Cleat



Z Metal

