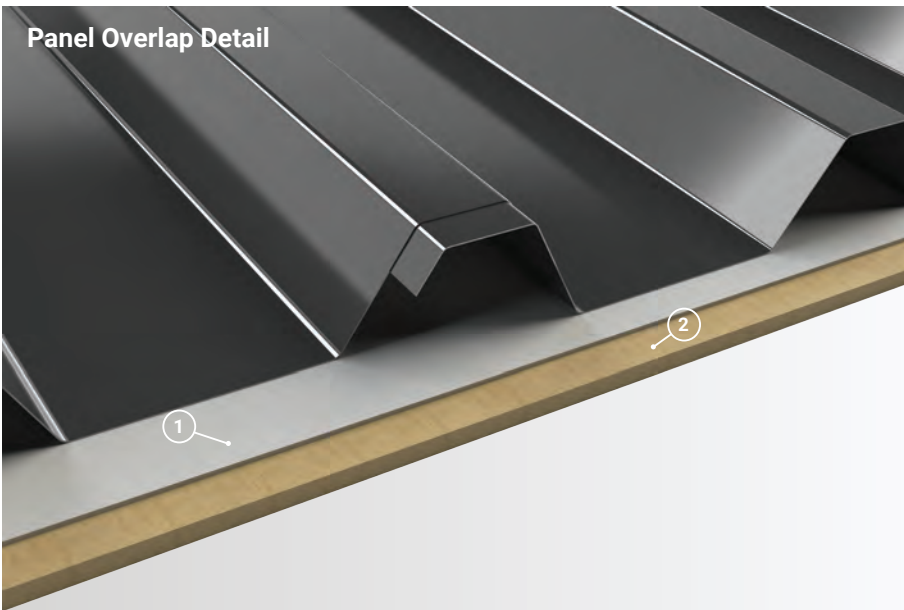


*Wall Panel Only

Panel Overlap Detail



1. **Underlayment:** Vapor Permeable Membrane
2. **Substrate:** Plywood substrate material shown. Can be installed over open framing.

Wall Coverage 36"

Deck Coverage 36"

Panel Gauges 22*, 24*
20 Ga. Galvanized Only

Fastener Options Exposed

Panel Length 3' to 50'

Rib Height 1.5" at 6" Centers

Roof Slope Not Available

Impact Rating Not Available

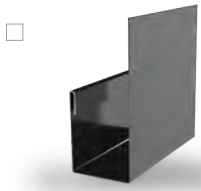
Wind Uplift Rating Not Available

Warranty Based on Paint System

For more information 1.877.783.3568

* Grade 50

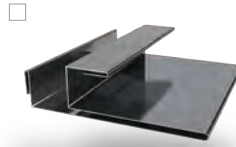
Version 3.2, 4/2018



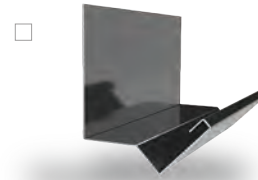
J- Trim



Double J-Trim



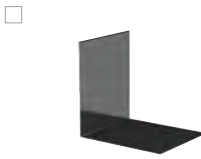
F & J Trim



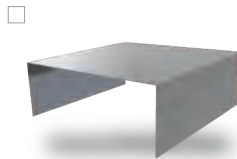
Head Trim



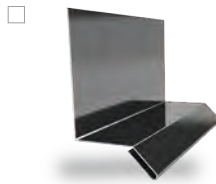
Outside Corner



Inside Corner



Door Cap



Base Drip



Double Base Drip



Broom Base



Wainscot



Fascia

**Additional Trim
Profiles Available
By Request**

