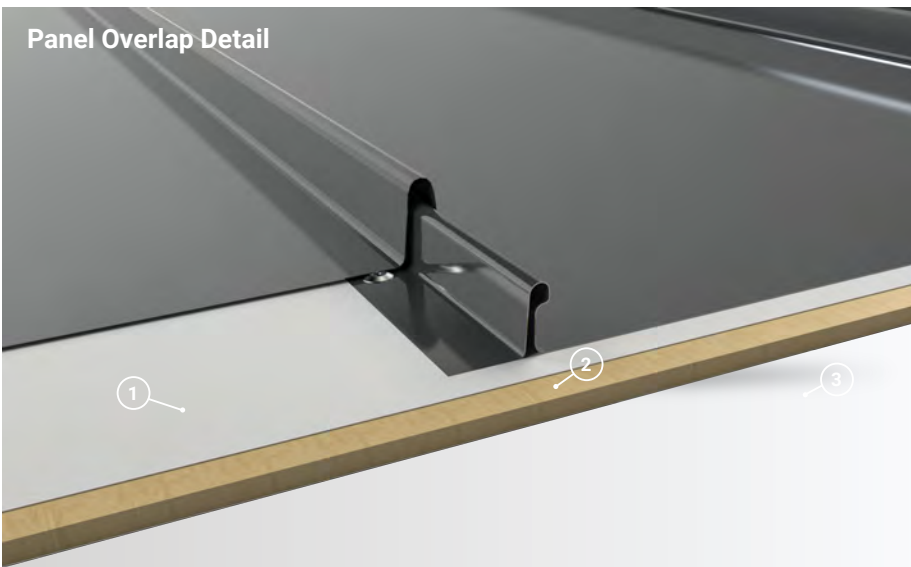


Panel Overlap Detail



1. **Underlayment:** High Temp Ice & Water
2. **Substrate:** Plywood substrate material shown

Roof Coverage 11-16"

Wall Coverage 11-16"

Panel Gauges 24*, 26

Fastener Options Concealed Fastener

Panel Length 3' to 30'+

Rib Heights 1" or 1.5"

Roof Slope Minimum 3:12 or Greater

Impact Rating UL 2218

Wind Uplift Rating UL 580

Warranty Based on Paint System

For more information 1.877.783.3568

* Grade 50

Version 3.2, 4/2018



Vented/Non-Vented Ridge Cap



Hip Ridge



W Valley



Transition -High to Low



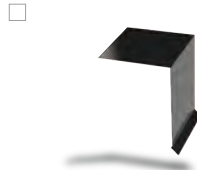
Transition - Low to High



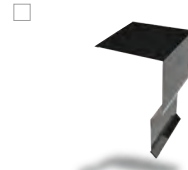
Open Prow Gable



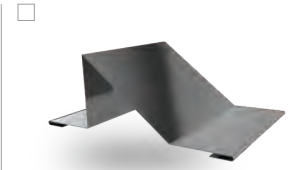
Closed Prow Gable



4" Mini Gable



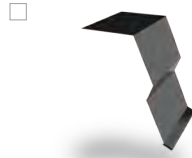
6" Gable



Snowbreak



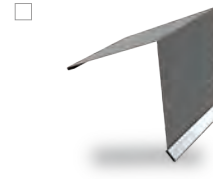
4" Eave



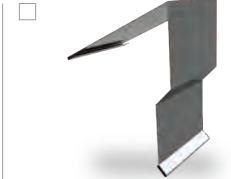
6" Eave



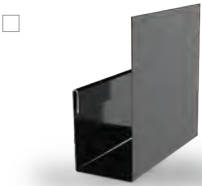
Style D Eave - 2" & 4"



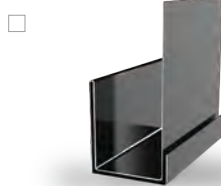
4" Mini Top Cap



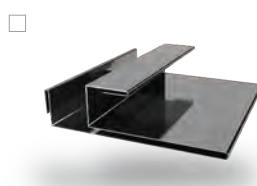
6" Top Cap



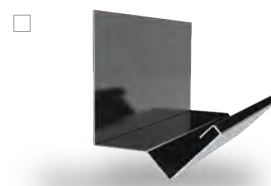
J Trim



Double J Trim



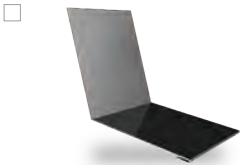
F & J Trim



Head Trim



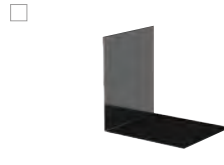
Side Wall



End Wall



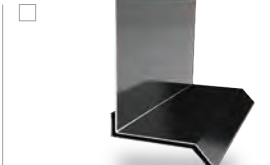
Outside Corner



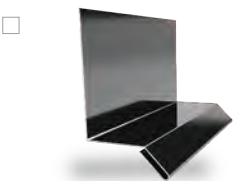
Inside Corner



Door Cap



Double Base Drip



Base Drip



Broom Base



Wainscot



Fascia

Additional Trim Profiles Available By Request

