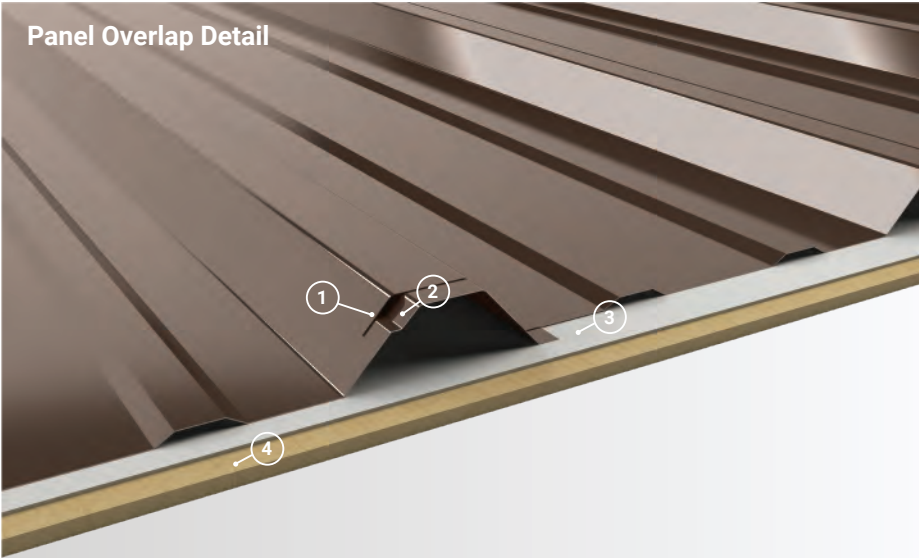


Panel Overlap Detail



- 1. 5 Degree Overbend:** Ensures tight overlap between panels.
- 2. Anti-Siphon Groove:** Creates an internal air gap at panel overlap to help prevent water intrusion.
- 3. Underlayment:** High Temp Ice & Water shown. For use at eaves and valleys.
- 4. Substrate:** Plywood substrate material shown. Can be installed over open framing with max span width of 60'.

Roof Coverage	36"
Wall Coverage	36"
Panel Gauges	26*
Fastener Options	Exposed
Panel Length	3' to 43'+ <small>Longer lengths available. Contact a Product Specialist.</small>
Rib Height	1.25" at 12" Centers
Roof Slope	Minimum 1:12 or Greater with Mastic
Impact Rating	UL 2218
Wind Uplift Rating	ASTM E1592
Warranty	Based on Paint System
For more information	1.833.STEEL.US

* Grade 80

Version 5.2, 3/2022



Vented/Non-Vented Ridge Cap



Hip Ridge



W Valley



Transition - High to Low



Transition - Low to High



Open Prow Gable



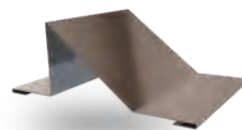
Closed Prow Gable



4" Mini Gable



6" Gable



Snowbreak



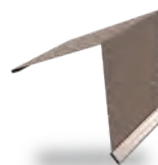
4" Eave



6" Eave



Style D Eave - 2" & 4"



4" Mini Top Cap



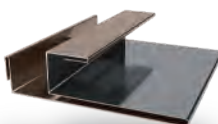
6" Top Cap



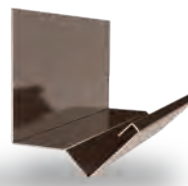
J Trim



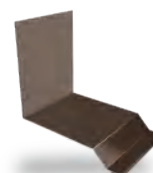
Double J Trim*



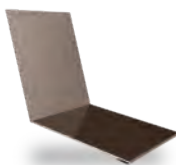
F & J Trim



Head Trim



Side Wall



End Wall



Outside Corner



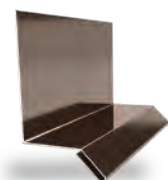
Inside Corner



Door Cap



Double Base Drip*



Base Drip



Broom Base



Wainscot



Fascia

**Additional Trim
Profiles Available
By Request**

* Color On Both Sides

