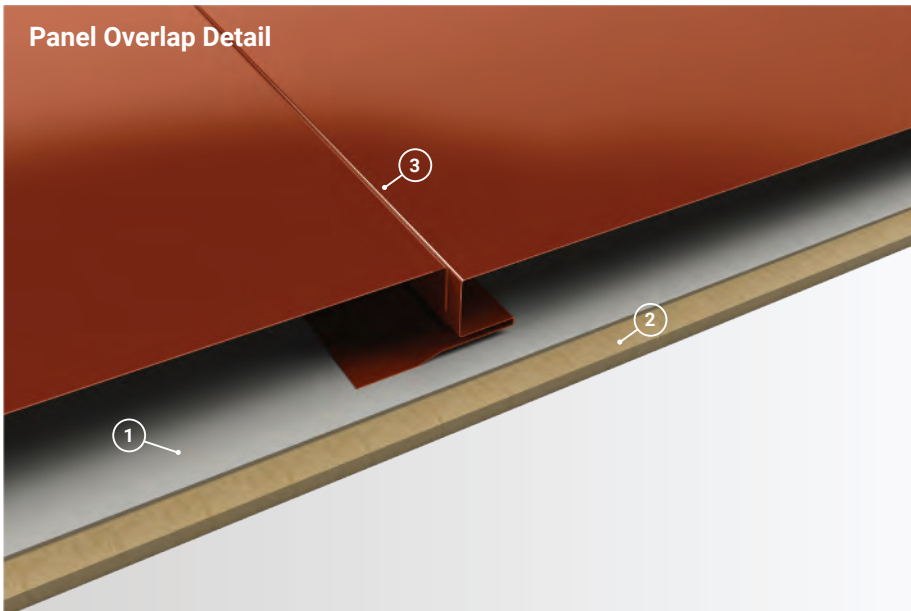


\*Custom Widths Available

## Panel Overlap Detail



- 1. Underlayment:** Semi-Permeable Vapor Barrier
- 2. Substrate:** Plywood substrate material shown
- 3. Reveal Width:** No reveal shown, can be manufactured with up to 1" of reveal between panels in 1/4" increments.

**Wall Coverage** 12" - 16"

**Reveal Widths** Flush to 1"  
1/4" Increments

**Panel Gauges** 22\*, 24\*

**Fastener Options** Concealed Fastener

**Panel Length** 4' to 30'+

**Relief Height** 7/8"

**Variegated Assembly** Available

**Stiffener Options** None, Single V, Double V

**Warranty** Based on Paint System

**For more information** 1.833.STEEL.US

\* Grade 50

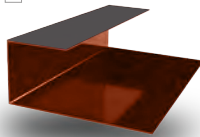
Version 5.1, 4/2021



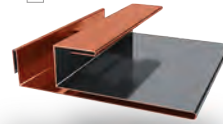
J Trim



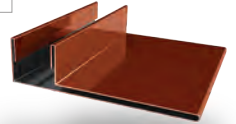
Double J Trim \*\*\*



Reverse J Trim \*



F & J Trim



F Trim



Sidewall



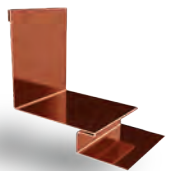
Outside Corner



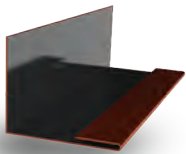
Outside Corner 2



Inside Corner



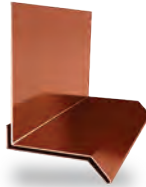
Inside Corner 2



Inside Corner Closure



Base Trim



Double Base Trim \*\*\*



Broom Base



Wainscot



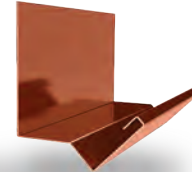
Fascia



Z Metal



H Trim \*\*



Head Trim

\* Used with Outside & Inside Corner 2 and H Trim  
\*\* Used with Reverse J Trim  
\*\*\* Color On Both Sides

**Additional Trim  
Profiles Available  
By Request**

