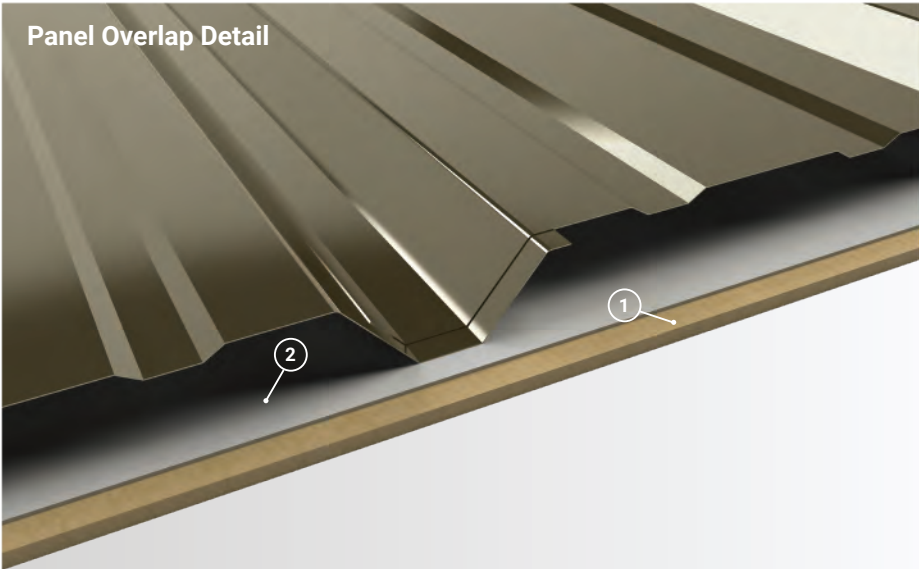


Panel Overlap Detail



1. **Substrate:** Plywood substrate material shown. Can be installed over open framing.
2. **Underlayment:** Vapor Permeable Membrane

Wall Coverage36"

Deck Coverage36"

Panel Gauges26*

Fastener OptionsExposed

Panel Length3' to 43'+
Longer lengths available. Contact a Product Specialist.

Rib Height1.25" at 12" Centers

Roof SlopeNot Available

Impact RatingNot Available

Wind Uplift RatingNot Available

WarrantyBased on Paint System

For more information1.833.STEEL.US

* Grade 80

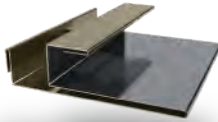
Version 5.2, 3/2022



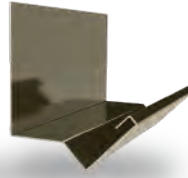
J Trim



Double J Trim*



F & J Trim



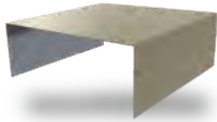
Head Trim



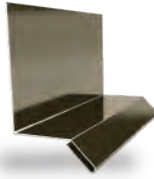
Outside Corner



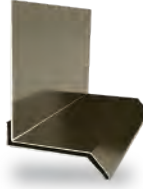
Inside Corner



Door Cap



Base Drip



Double Base Drip*



Broom Base



Wainscot

**Additional Trim
Profiles Available
By Request**

* Color On Both Sides