

## Panel Overlap Detail



1. **Clip System:** Fixed or Floating clip systems available
2. **Substrate:** Can be used over open framing with max span width of 60". Plywood substrate material shown.
3. **Underlayment:** High Temp Ice & Water

**Roof Coverage** 14.75", 16", & 18"

**Radius Panel** Available

**Panel Gauges** 22\*, 24\*

**Fastener Options** Concealed Clip System

**Panel Length** 3' to 43' Shop Production  
100'+ Run Onsite

**Rib Height** 2"

**Roof Slope** Minimum 1:12 or Greater with  
Factory Applied Sealant

**Impact Rating** UL 2218

**Wind Uplift Rating** ASTM E1592

**Warranty** Based on Paint System

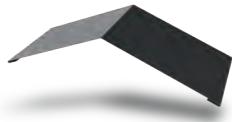
**For more information** 1.833.STEEL.US

\* Grade 50

Version 5.1, 5/2021



Vented/Non-Vented Ridge Cap



Hip Ridge



W Valley



Transition -High to Low



Transition - Low to High



Open Prow Gable



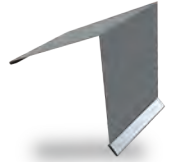
Mini Gable



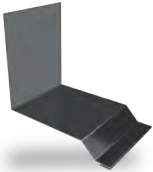
Eave



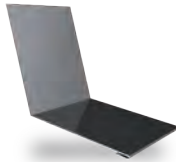
Style D Trim



Mini Top Cap



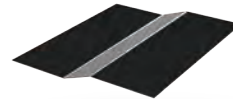
Sidewall



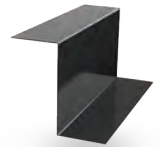
Endwall



Fascia



Offset Cleat



Z Metal

