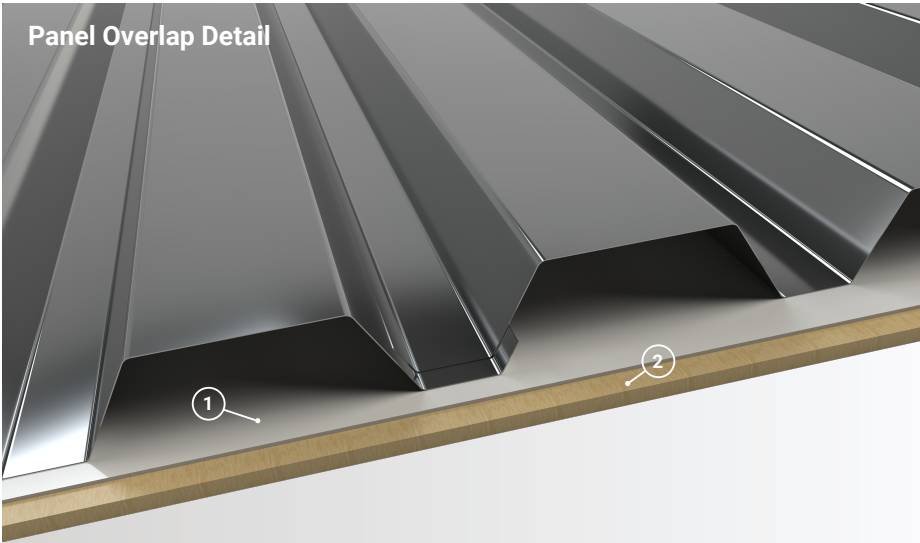


Panel Overlap Detail



- 1. **Underlayment:** Semi-Permeable Vapor Barrier.
- 2. **Substrate:** Plywood substrate material shown.

Finished Coverage 36"

Panel Gauges 22, 24
20 Ga. Galvanized & Galvalume

Fastener Options Exposed

Panel Length 3' to 50'+

Rib Height 1.5" at 6" Centers

Uses the highest quality **50K** tensile strength steel.

Available in **24 colors in 22 Gauge** and **39 colors in 24 Gauge**, as well as **Galvanized and Galvalume in 20 Gauge**. Can be used over open framing or as a decking panel. Can be used as a "B" Deck panel over open purlin.

Consult with a product specialist for span loads for this product.

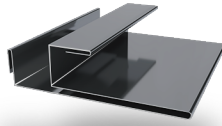
*Not intended as a roofing product.



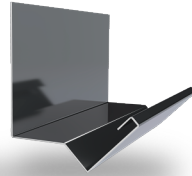
J Trim



Double J Trim



F & J Trim



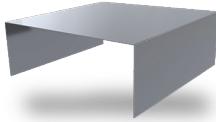
Head Trim



Outside Corner



Inside Corner



Door Cap



Base Drip



Double Base Drip



Broom Base



Wainscot

30 YEAR WARRANTY

22-24 Gauge Thickness of Base Steel
G90 Galvanized Substrate
Polyvinylidene Flouride Paint System

20 YEAR WARRANTY

20-24 Gauge Thickness of Base Steel
Bare Galvalume Warranty
Clear Polyvinylidene Flouride Paint System

Top Coat - PVDF Finish

Top Primer - PVDF Primer

Substrate - Galvanized Coating

Base Steel - Core Material

Substrate - Galvanized Coating

Primer - Exposed Interior Finish

PANEL LAYERS

Every Bridger Steel panel uses multiple layers of protection to help prevent damage and create lasting beauty

24 Gauge Paint Panel Layers Shown in Example.