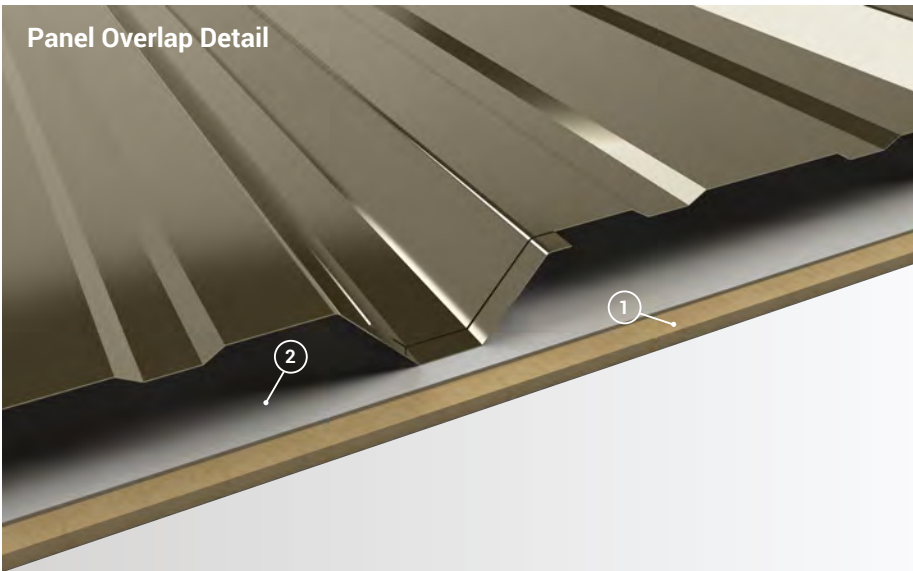


**Panel Overlap Detail**



- 1. **Substrate:** Plywood substrate material shown
- 2. **Underlayment:** Vapor Permeable Membrane

**Finished Coverage** 36"

**Panel Gauges** 26

**Fastener Options** Exposed

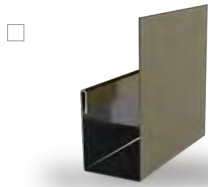
**Panel Length** 3' to 50'

**Rib Height** 1.25"

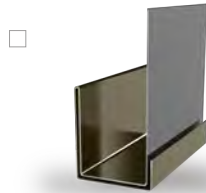
Uses the highest quality **80K** tensile strength steel.

Choose from **10 colors in 26 Gauge, including Galvalume.** See our color charts for options. Can be installed over open framing or over a solid decking.

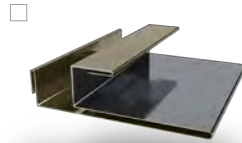
\*Not intended as a roofing product.



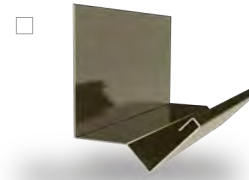
J Trim



Double J Trim



F & J Trim



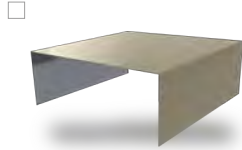
Head Trim



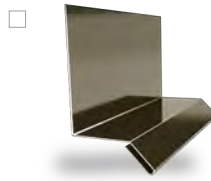
Outside Corner



Inside Corner



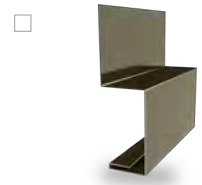
Door Cap



Base Drip



Double Base Drip



Broom Base



Wainscot

## 40 YEAR WARRANTY

26 Gauge Thickness of Base Steel  
G90 Galvanized Substrate  
Silicon-Modified Polyester Paint System

## 25 YEAR WARRANTY

26 Gauge Thickness of Base Steel  
AZ50 Galvalume Substrate  
Clear Polyvinylidene Fluoride Paint System

Top Coat - SMP Painted Finish

Top Primer - White SMP Paint

Substrate - Galvanized Coating

Base Steel - Core Material

Substrate - Galvanized Coating

Backer - Assists in Paint Adhesion

Bottom Primer - White Liner

## PANEL LAYERS

Every Bridger Steel panel uses multiple layers of protection to help prevent damage and create lasting beauty

26 Gauge SMP Panel Layers Shown in Example.