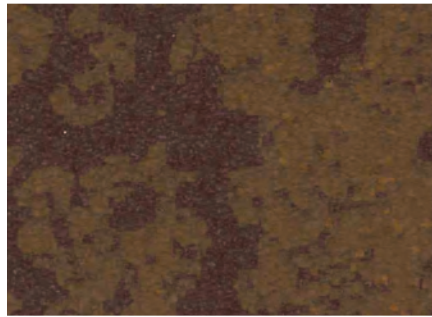


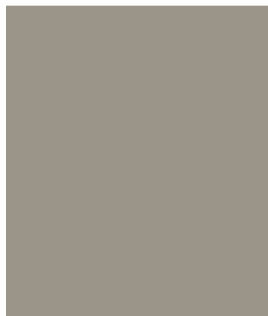
24 GA RAWHIDE FINISHES

LET THE TEXTURED STYLE OF OUR RAWHIDE FINISHES MAKE A STATEMENT ON YOUR NEXT PROJECT. THIS MODERN FINISH BRINGS DEPTH AND VISUAL INTEGRITY TO RESIDENTIAL AND COMMERCIAL PROJECTS. THE SCRATCH-RESISTANT COATING AND SUBTLE TEXTURE MAKE RAWHIDE THE PERFECT CHOICE FOR LONG LASTING ROOFING, SIDING AND INTERIOR DESIGN.

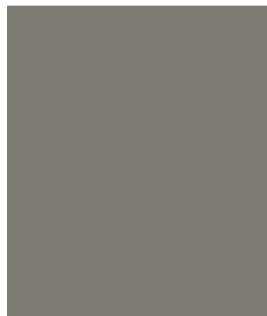
RAWHIDE FINISHES HAVE BEEN TESTED FOR THE TIGHTEST BENDS TO ENSURE OUTSTANDING FORMABILITY WITHOUT LOSING STYLE OR INTEGRITY. THIS FINISH STANDS UP TO SOLVENTS ENSURING EXCELLENT ADHESION OF COATING TO STEEL SURFACE.



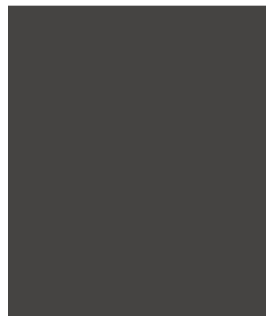
RUSTIC



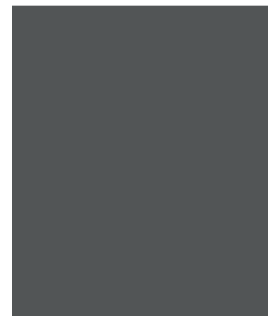
HICKORY



SLATE GRAY



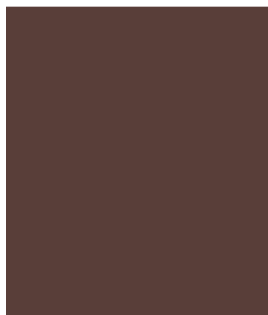
STEEL GRAY



ASH GRAY



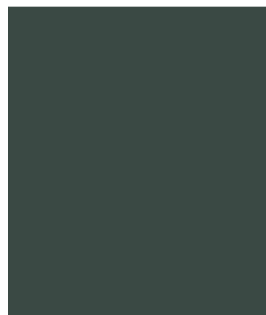
BURNISHED SLATE



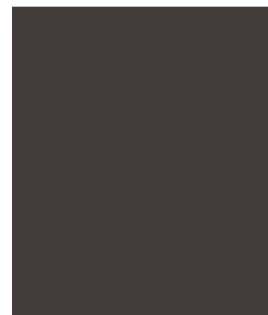
APACHE



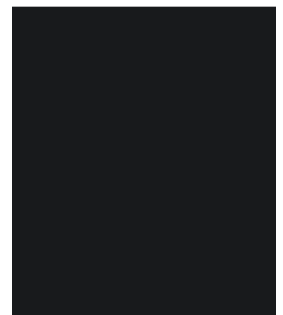
CHILI POWDER



HARTFORD GREEN



DARK WALNUT



COAL BLACK

| | Rustic | Hickory | Slate Gray | Steel Gray | Ash Gray | Burnished Slate | Apache | Chili Powder | Hartford Green | Dark Walnut | Coal Black |
|---------------------------|--------|---------|------------|------------|----------|-----------------|--------|--------------|----------------|-------------|------------|
| Standing Seam | | | | | | | | | | | |
| 3" Trapezoidal | • | • | • | • | • | • | • | • | • | • | • |
| 2" Mechanical Lock | • | • | • | • | • | • | • | • | • | • | • |
| 1.5" Mechanical Lock | • | • | • | • | • | • | • | • | • | • | • |
| 1" Mechanical Lock | • | • | • | • | • | • | • | • | • | • | • |
| 1.75" Tru Snap | | | | | | | | | | | |
| 1.5" Tru Snap | • | • | • | • | • | • | • | • | • | • | • |
| 1" Tru Snap | • | • | • | • | • | • | • | • | • | • | • |
| Ultra Batten Wall | • | • | • | • | • | • | • | • | • | • | • |
| Snap Batten | • | • | • | • | • | • | • | • | • | • | • |
| 1.5" Nail Strip | • | • | • | • | • | • | • | • | • | • | • |
| 1" Nail Strip | • | • | • | • | • | • | • | • | • | • | • |
| Corrugated | | | | | | | | | | | |
| 7/8" Corrugated | • | • | • | • | • | • | • | • | • | • | • |
| 3/4" Corrugated | | | | | | | | | | | |
| 1/2" Corrugated | • | • | • | • | • | • | • | • | • | • | • |
| 1/4" Corrugated | • | • | • | • | • | • | • | • | • | • | • |
| Box Rib | | | | | | | | | | | |
| 7.2 Structural | • | • | • | • | • | • | • | • | • | • | • |
| 6025 Structural | • | • | • | • | • | • | • | • | • | • | • |
| Montana Rib | | | | | | | | | | | |
| 3' Panels | | | | | | | | | | | |
| Purlin Bearing Rib | | | | | | | | | | | |
| Valley Rib | | | | | | | | | | | |
| Tuff Rib | | | | | | | | | | | |
| Delta Rib | | | | | | | | | | | |
| Platte River | | | | | | | | | | | |
| Soffit | | | | | | | | | | | |
| V Soffit + V Wall | • | • | • | • | • | • | • | • | • | • | • |
| Flush Wall + Flush Soffit | • | • | • | • | • | • | • | • | • | • | • |

We offer many other colors and profiles not included on this chart.
 See product specialist about gauges, colors and profile availability. Custom trim available with all profiles.
 • Panel profile available in color listed.