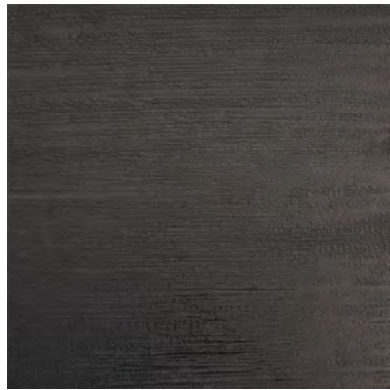


SPECIALTY FINISHES

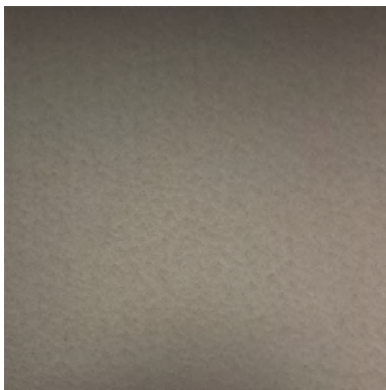
OUR SPECIALTY FINISHES PROVIDE UNIQUE LOOKS FOR YOUR ARCHITECTURAL NEEDS. FROM WEATHERED STEEL TO MODERN INDUSTRIAL, THESE FINISHES ARE SURE TO LEAVE A LASTING IMPRESSION IN YOUR NEXT PROJECT. ALL THE FINISHES ON THIS CHART ARE AVAILABLE IN A WIDE VARIETY OF PROFILES AND MATCHING TRIM.



CHARRED WOOD



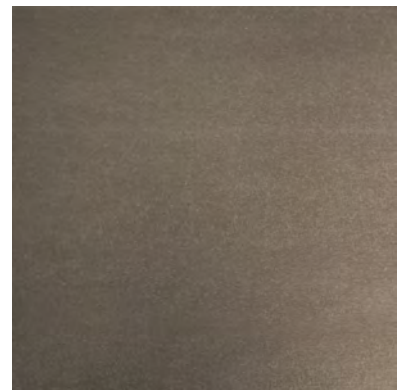
WEATHERED WOOD



VINTAGE



TRUTEN™ A606



BONDERIZED

| | Bonderized | Truten™ A606 | Corten AZP Raw | Vintage | Charred Wood | Weathered Wood |
|----------------------|------------|--------------|----------------|---------|--------------|----------------|
| STANDING SEAM | | | | | | |
| 3" Trapezoidal | • | | • | • | • | • |
| 2" Mechanical Lock | • | • | • | • | • | • |
| 1.5" Mechanical Lock | • | • | • | • | • | • |
| 1" Mechanical Lock | • | • | • | • | • | • |
| 1.75" Tru Snap | • | | • | • | • | • |
| 1.5" Tru Snap | • | • | • | • | • | • |
| 1" Tru Snap | • | • | • | • | • | • |
| Ultra Batten | • | • | • | • | • | • |
| Snap Batten | • | • | • | • | • | • |
| 1.5" Nail Strip | • | | • | • | • | • |
| 1" Nail Strip | • | | • | • | • | • |
| CORRUGATED | | | | | | |
| 7/8" Corrugated | • | • | • | • | • | • |
| 3/4" Corrugated | | | | | | |
| 1/2" Corrugated | • | • | • | • | • | • |
| 1/4" Corrugated | • | • | • | • | • | • |
| BOX RIB | | | | | | |
| 7.2 Structural | • | • | • | • | • | • |
| SOFFIT | | | | | | |
| V Soffit | • | • | • | • | • | • |
| Flush Soffit | • | • | • | • | • | • |
| FLAT PANELS | | | | | | |
| Shiplap | • | • | • | • | • | • |
| V Groove Wall | • | • | • | • | • | • |

We offer many other custom colors and profiles not included on this chart
 See Product Specialist about gauges, colors, and profile availability. Custom trim available with all profiles.