

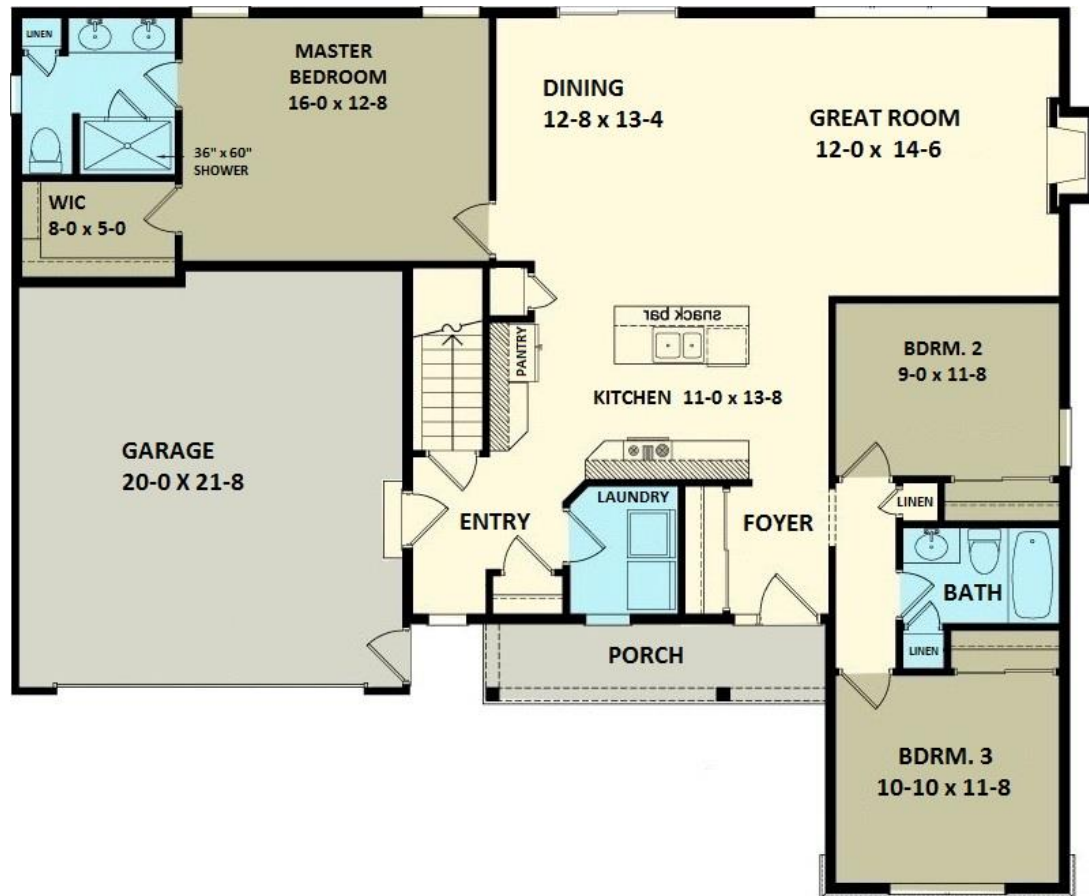


Welcome to the Somersworth
1571 SF- 3 BR, 2 Bath Home

FEATURING

- Nice Open Floor Plan
- Granite Kitchen countertops
- Gas Fireplace
- 9' Ceilings
- Stone Veneer accents
- Slab Plumbing in Basement
- Central A/C
- Appliances pkg.
- Lawn / Paved Driveway/
Starter landscaping
- Many More Builder Upgrades

\$280,000



Gerber
HOMES

We Build Dreams. Families Live Them.



Sharon Steck
(Cell) 585-259-7172
sharon@gerberhomes.com