

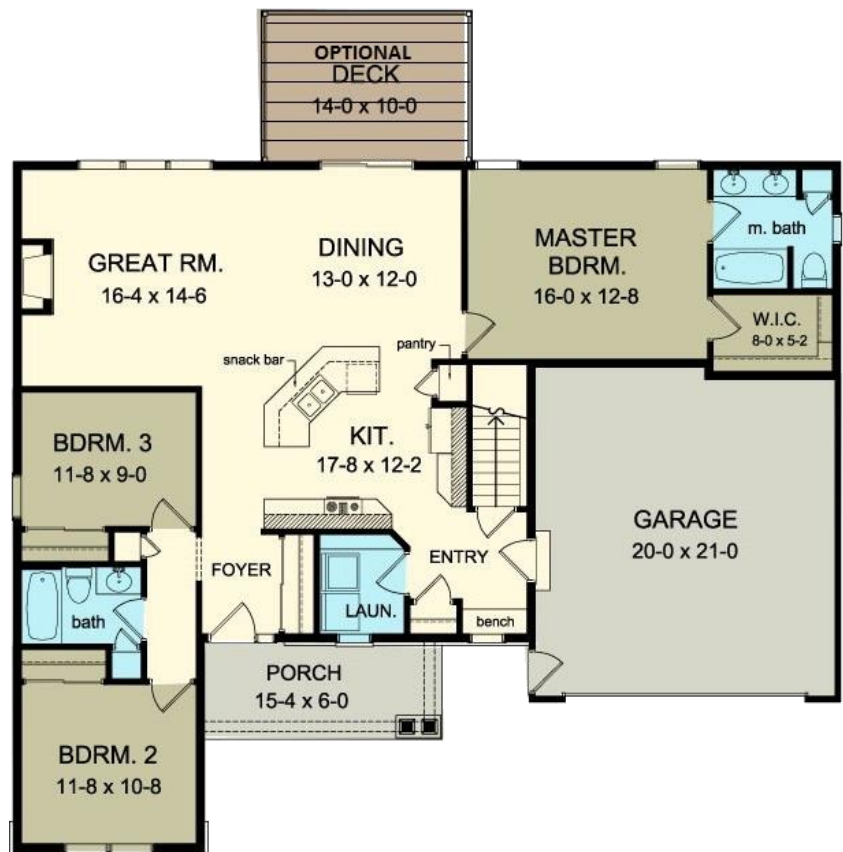


Welcome to the
Somersworth
1571 SF- 3 BR, 2 Bath Home

FEATURING

- Nice Open Floor Plan
- Walkout Basement
- Hardwood Floors
- Gas Fireplace
- 9' Ceilings
- Tapered porch column w/ stone bases
- Stone Verneer accents
- Vertical Siding accents
- Slab Plumbing in Basement
- Central A/C
- Many More Builder Upgrades

\$265,980



Call for an appointment to tour this house early



Gerber
HOMES

We Build Dreams. Families Live Them.

Sharon Steck
(Cell) 585-259-7172
sharon@gerberhomes.com

