



BodiTrak LT Cheat Sheet

Steps to Start Pressure Mapping

1. Turn on the tablet.
2. Tap on CC app.
3. Plug cables into the mat: **DO NOT SIT OR PLACE ANYTHING ON THE MAT**, lay the mat over cushion without any wrinkles and allow time for the mat to calibrate before placing patient on it
 - You will be asked when you first plug tablet into the mat if you want to allow the app CC to access the USB device. Tap yes.
4. Tap "Start Mapping."
5. Once calibrated, apply pressure to map to confirm it is reading.
6. Move dispersion index box to IT area.
7. Transfer client to the mat.

Tips & Facts

- Wifi: Always connect to Wifi in settings tab for automatic updates and email capability.
 - In order to set up an email account, give tablet to your site's IT department to set up an email account for you.
- Power off completely when done. Tablet does not go into power saver mode when cover is closed.
- Disinfect between every patient.

Care Instructions

Mat made with 4-way stretch fabric, made from elastic knit:

- Waterproof
- Can be disinfected with standard grade disinfectants.
- No need to place barrier between patient and mat (like a plastic bag that could skew results)
- Since no barrier is required for hygiene, allows for increased stability and increased accuracy of data
- 4-way stretch design allows for truest reading and prevents hammocking of the mat

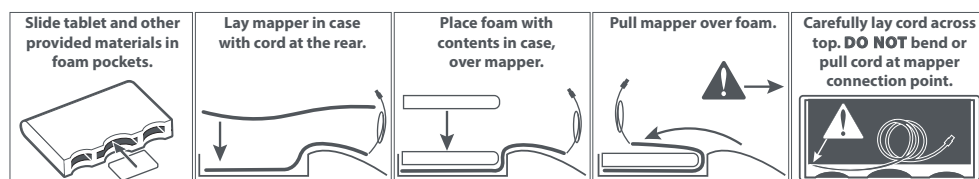
Support

BodiTrak System & User Interface: For service & support contact 1-800-847-3157

ASUS Tablet: For warranty & tech support contact 1-888-678-3688 or visit <http://www.asus.com/us/support/>

Storage

Do not wrap the cord around the foam insert and mat at any time as it compromises the cord connection point and could cause pressure points on the mat.



BodiTrak LT System & HIPAA Compliance

The BodiTrak LT pressure mapping system may be used to collect patient information that may be protected by HIPAA (Health Insurance Portability and Accountability Act). The device provided is equipped with a pass code capability to limit access to information that is held on the device. It is the responsibility of the purchasing party to activate and utilize this capability.

The device has the capability to modify the method by which electronic information is transmitted from this device to another. It is the responsibility of purchasing party to ensure the method of electronic transfer of protected patient information is performed in accordance with HIPAA requirements. Permobil is not responsible for purchasing party compliance with HIPAA laws.

Please contact Permobil for additional questions regarding HIPAA compliance or our Privacy Policy.

When I power on the tablet from the Home Screen what icons am I interested in?

**Please note these symbols may change with software updates but the function will remain the same.

You really only need to be concerned with:

- An email icon set up via your IT department
- A settings icon: for access to tablet settings, not pressure map settings
- **Comfort Company App: launches pressure map**

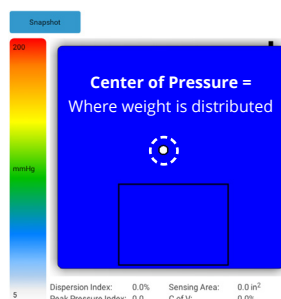
When I tap the Comfort Company App 6 icons appear. What do they mean?

- **Start Mapping: launches pressure mapping system**
- PDF File Manager: where all pressure mapping session information is stored
- Instructional information on how to and the benefits of pressure mapping: How To, ISO Guidelines, Pressure Mapping 101, Quick Guide
- ISO Guidelines: lengthy but very informative document that is worth the read on pressure mapping and what it can bring to the table
- Pressure Mapping 101: lengthy but very informative document that is worth the read on pressure mapping and what it can bring to the table
- Quick Guide: short video with easy steps on how to use

Start Mapping Screen: Values and Terms

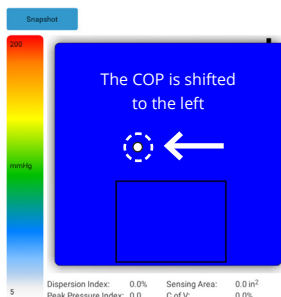
1. Center of Pressure (COP)
2. Peak Pressure Index (PPI)
3. Dispersion Index (DI)
4. Sensing Area
5. Coefficient of Variation (CoV)
6. Risk Tab
7. Gradient Tab

1. Center of Pressure (COP)



Example Flexible Left Pelvic Obliquity

BASELINE MAP

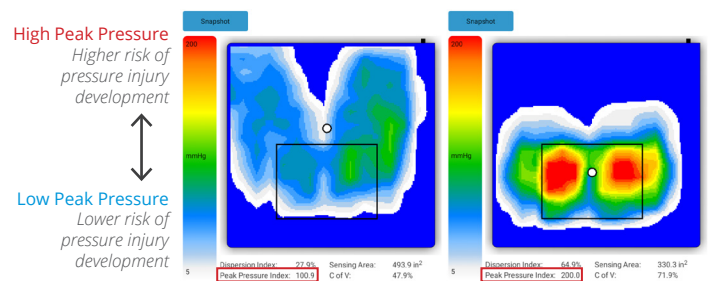


MODIFY CUSHION OR TRIAL OTHERS



2. Peak Pressure Index (PPI)

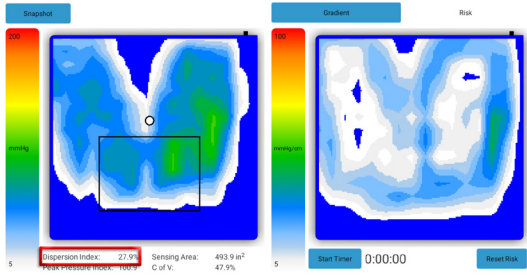
The PPI are areas at greatest risk for pressure injury



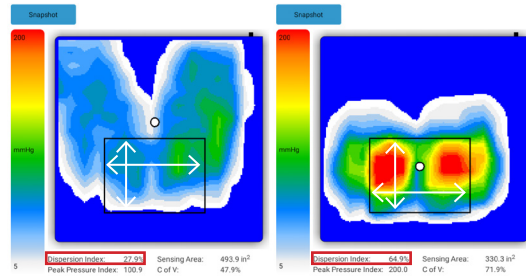
The lighter blue the color is, the less concern of high peak pressure in that area

3. Dispersion Index (DI)

The DI indicated how well pressure is being distributed away from the peak pressure areas (high risk areas)



Shows sensors across & down the pad area



$$DI \% = \frac{\text{Sum of pressure redistributed over the index square}}{\text{Sum of pressure readings over the entire sensor mat}}$$

What does this mean?

Indicates how well pressure is being displaced away from the high risk area. It relates back to the principle of pressure redistribution to show how well a cushion is redistributing pressure through offloading or immersion.

Interpreting Results

- > 50% = An indication of **RISK**, decreased pressure distribution away from IT's
- < 50% = Indicates better pressure redistribution away from high risk areas

Where do I place the box?

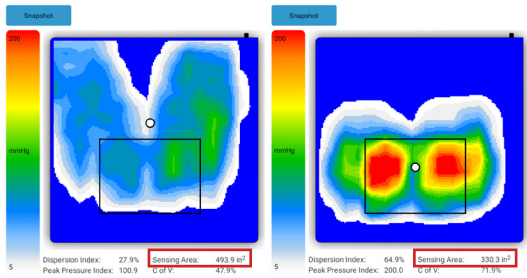
You can drag the box to the area of high peak pressures that you are concerned with. Best placed under the IT's to get a reading of how the pressure is being dispersed.

DI Benefits

- Comparing cushions
- Tells you how well a cushion disperses pressure away from high risk areas

4. Sensing Area

The Sensing Area indicates how much surface contact is being made between the patient and the seat surface



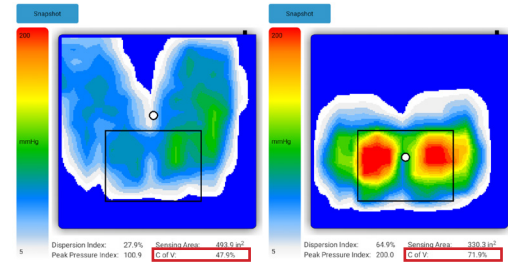
> Sensing Area = > Support for Pressure Redistribution

A higher number indicates greater surface contact with the mat.

5. Coefficient of Variation (CoV)

The CoV indicates how evenly the pressure is redistributed across the support surface and is expressed as a percentage, usually the inverse of the sensing area.

A statistical measure that shows how evenly the pressure is distributed across a support surface

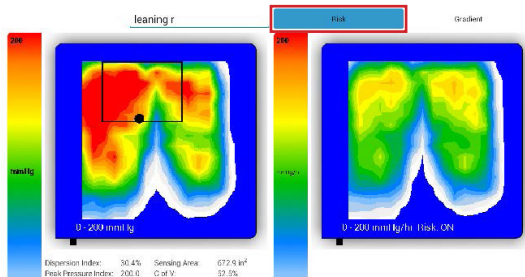


A low CoV = more even pressure redistribution

6. Risk Tab

The Risk tab is measured in mmHg/hour indicating tissue loading over a longer period of time:

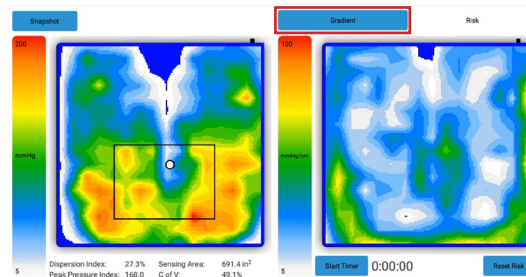
- This will tell what areas are at greatest risk with LONGER periods of time.



7. Gradient Tab

The Gradient Tab is measure in mmHg/cm:

- Measures quick changes in pressure from one location to another, which may indicate the potential of shear forces.
- The possibility of shear forces may be reason to consider adding a shear reducing fabric to the cushion cover.



@ 200 mmHG

Poor pressure redistribution
Added shear forces on tissues
Risk of decreased blood flow

Risk of tissue deformation
Indicator of pinch shear

Icons you see on the top right of the screen when you start mapping:

- **Single Capture** (box with one solid box inside): snapshot in time of one cushion
- **Multi Capture** (box with four dots inside): to compare up to 4 cushions
- **Camera** (a camera): to take PDF pictures
- **Settings** (wrench): to adjust ISO standards (do not recommend) and input patient's weight
- **Rotation Symbol**: change how you view the image on the mat

Single and Multi-Capture Options

Remember this is a snapshot in time and doesn't tell you what happens at the seat surface over a long period of time. Try to capture a snapshot at different times of the day and during different activities to get a more accurate perspective.

How and when to use Single Capture:

When to use Single Capture

- "On the go mapping": gives a quick picture of what is happening at that moment in time
- Helps to appropriately configure a chair
- Biofeedback: great biofeedback tool while teaching pressure relieving strategies on when and how far to tilt/recline/etc.

How to use Single Capture Function and record your image/data:

- Sit patient on mat
- Tap single capture icon
- Tap "Snapshot" in top left corner
- Enter patient's name, name of cushion, and any notes you want to add
- Tap OK and you will hear a snapshot
- Once you hear the snapshot the image is saved to the File Manager

How and when to use Multi Capture:

When to use Multi Capture

- Comparison of up to 4 cushions to choose the appropriate product
- Compare peak pressures and pressure redistribution between products, remembering it is a snapshot in time.

How to use Multi Capture Function and record your image/data

- Tap icon
- Instead of "Snapshot" option in the top left corner, you will see "Start Comparison"
- Tap "Start Comparison"
- Enter patient's name
- Place the patient on the 1st cushion and enter the cushion name in the Comment section
- Tap the "Snapshot" icon
- Repeat this process for up to four cushions
- When done tap the "Finish" icon

Where do I find the PDF image I took?

- Hit the back icon on the bottom of the screen
- Click PDF File Manager Icon
- Click the session name you are interested in, and it will pull up the images, data and notes you took for easy review

How do I email these PDF images/data?

- Hit the back icon on the bottom of the screen
- Click Email
- Click Compose (+) and enter recipient's email address
- Click Attachment button (paper clip)
- Choose the file you want to send from the File Manager
- Push send and the email will be sent from the account IT set up for you